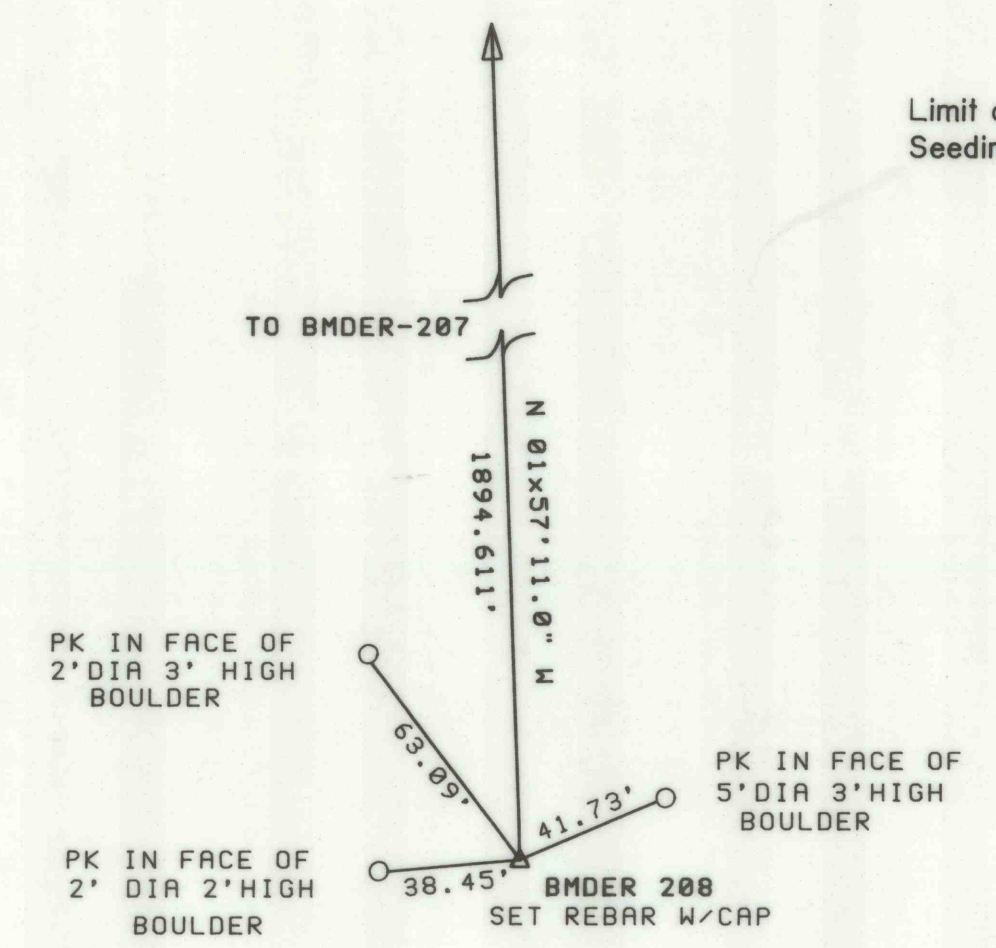


Begin 2' Wide Ditch "B" with R-3 Rock Lining  
Inv. El. 1931.0 ±, Sta 0+00"B"  
See Detail, Dwg. No. 9 of 9

CONSTRUCTION BASELINE CONTROL DATA



WHITE ASH LAND ASSOCIATION

BENCH MARK DATA					
BM NO.	BASELINE STA.	ELEVATION	DESCRIPTION	N COORDINATE	E COORDINATE
BMDER-208	10+00C	1936.17	SET REBAR W/CAP	477173.34	2358741.94



NO.	DATE	REVISION	APPR.

SUBMITTED  
*Michael S. Lazorki* PROJECT ENGINEER  
*Ramesh Gosai* PROJECT COORDINATOR  
 APPROVED  
*B. Rao*  
 CHIEF - DIVISION OF ACID MINE DRAINAGE ABATEMENT  
 APPROVED  
*F. Hill*  
 DIRECTOR - BUREAU OF ABANDONED MINE RECLAMATION



COMMONWEALTH OF PENNSYLVANIA  
 DEPARTMENT OF ENVIRONMENTAL RESOURCES

CONTRACT NO. BF 325-101.1

**BOND FORFEITURE  
 RECLAMATION PROJECT**  
 JOHN PERCIVAL COAL COMPANY  
 MINING PERMIT NOS. 1087-3,-3A,-4,-6,-6RE  
 COLLEY TOWNSHIP SULLIVAN COUNTY

PLAN

DRAWN BY R.ROY	DATE 3-8-95	DRAWING NO. 7 of 9
CHECKED BY HSL	SCALE AS SHOWN	

TOPOGRAPHY BY T.V.G.R. LANGE,  
 P.E., USING AERIAL PHOTOGRAPHY  
 DATED 11-18-93.  
 COORDINATES ARE BASED ON  
 PA. STATE PLANE.  
 ALL ELEVATIONS SHOWN ARE  
 BASED ON U.S.G.S. DATUM  
 N.G.V.D. 1929.  
 ALL DIMENSIONS AND EXISTING CONDITIONS  
 SHALL BE CHECKED AND VERIFIED  
 BY THE CONTRACTOR AT THE SITE.

