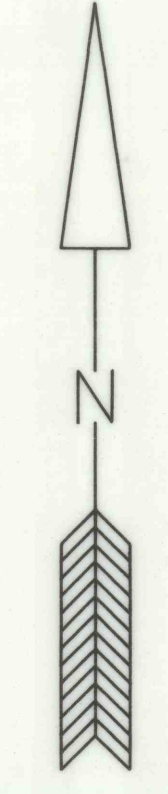
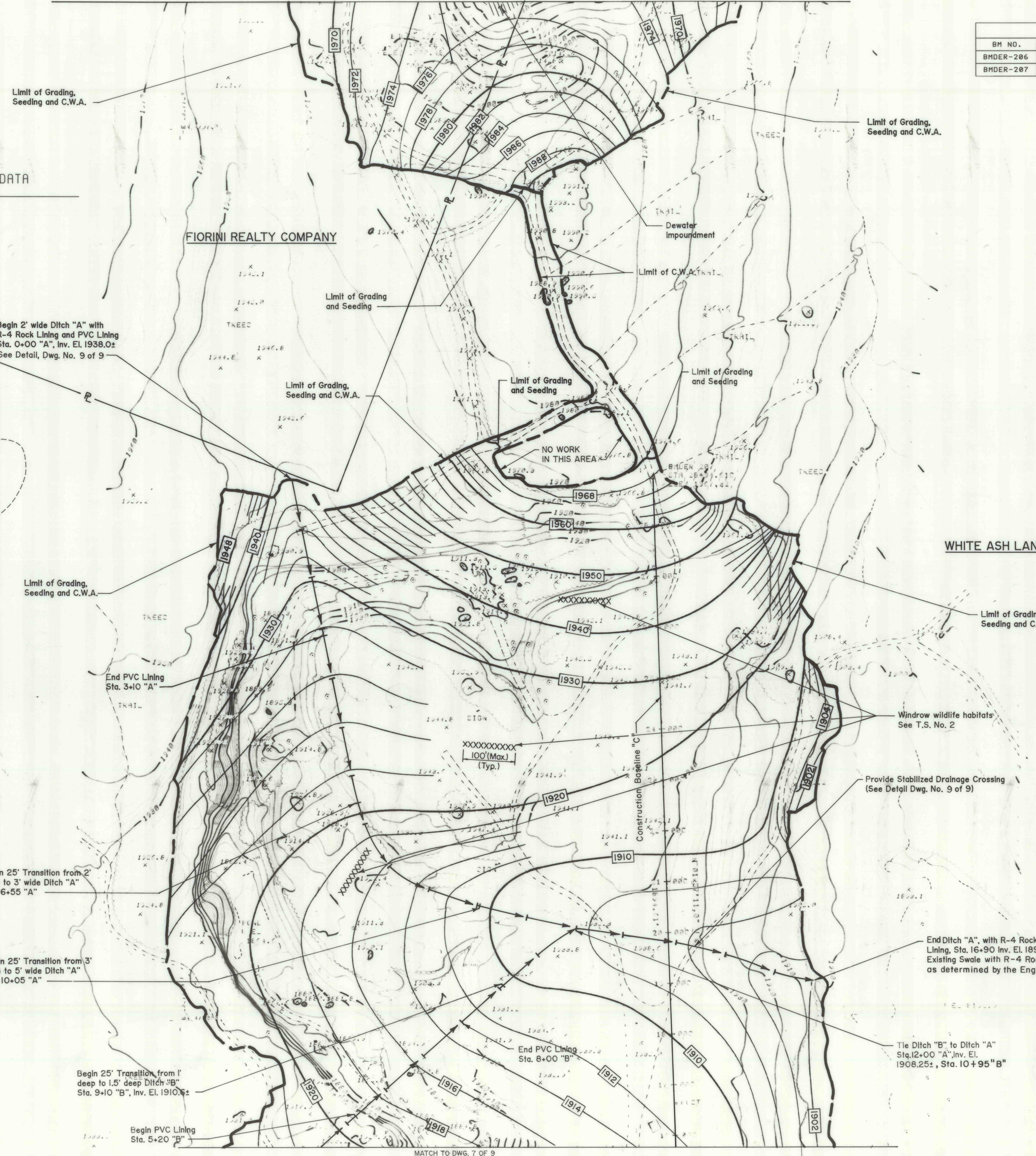
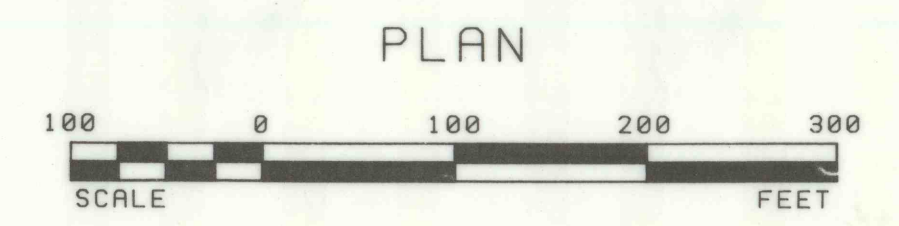
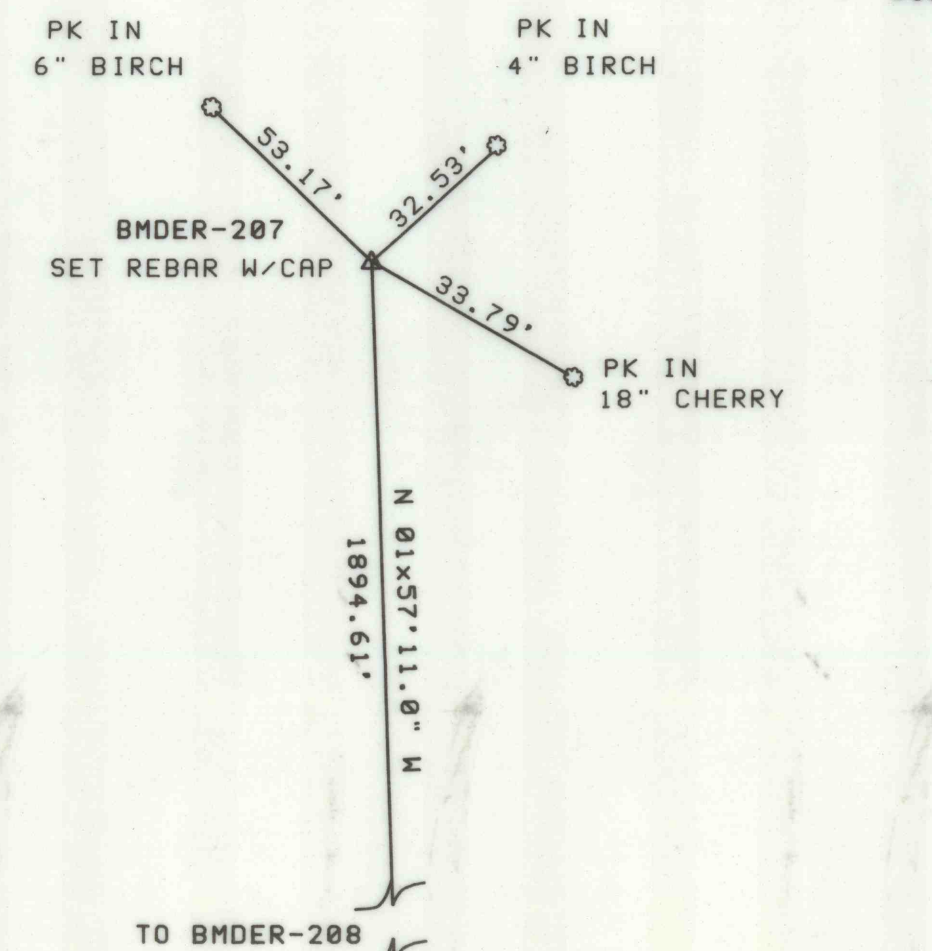
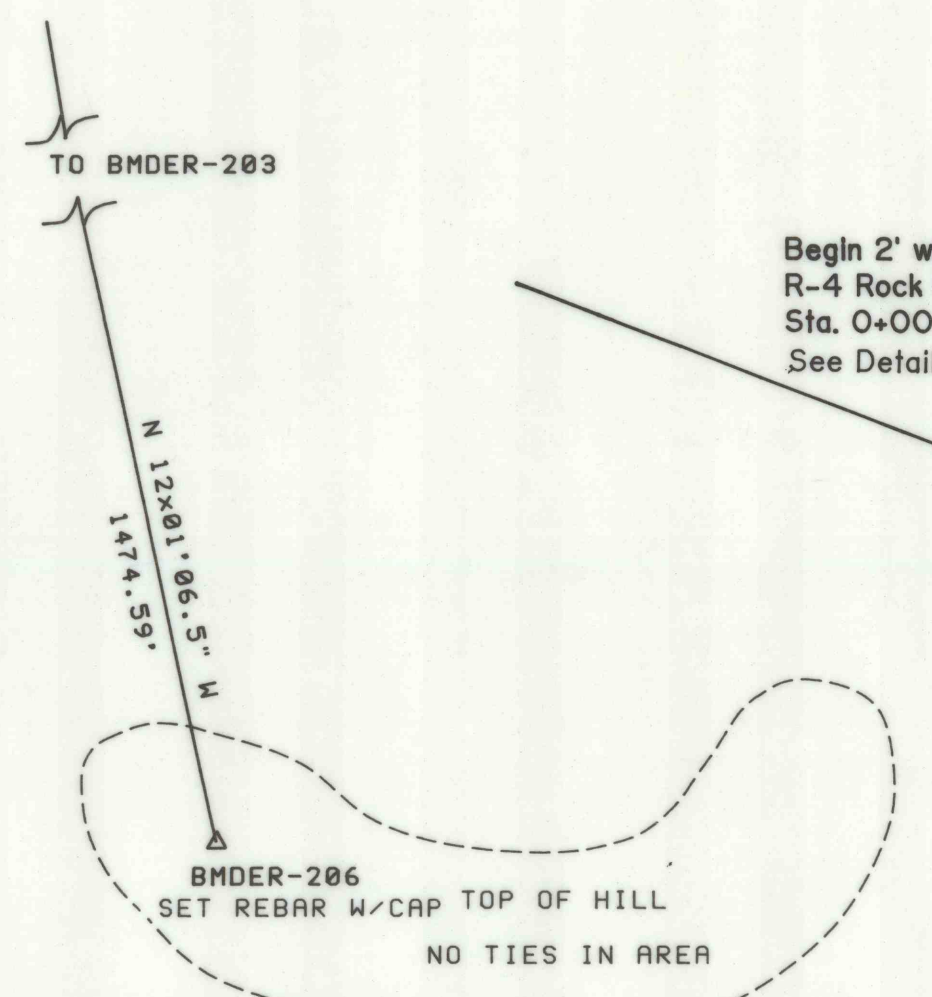


BENCH MARK DATA					
BM NO.	BASELINE STA.	ELEVATION	DESCRIPTION	N COORDINATE	E COORDINATE
BMDER-206	STA 10+00B	2000.48	SET REBAR W/CAP	479879.13	2358286.03
BMDER-207	STA 28+94.61C	1967.32	SET REBAR W/CAP	479866.85	2358677.37

CONSTRUCTION BASELINE CONTROL DATA



NO.	DATE	REVISION	APPR.

SUBMITTED: *Michael S. Lazorki* PROJECT ENGINEER, *Ramona G. Desai* PROJECT COORDINATOR

APPROVED: *APR* CHIEF - DIVISION OF ACID MINE DRAINAGE ABATEMENT

APPROVED: *J. H. B. H.* DIRECTOR - BUREAU OF ABANDONED MINE RECLAMATION



COMMONWEALTH OF PENNSYLVANIA
DEPARTMENT OF ENVIRONMENTAL RESOURCES

CONTRACT NO. BF 325-101.1

**BOND FORFEITURE
RECLAMATION PROJECT**
JOHN PERCIVAL COAL COMPANY
MINING PERMIT NOS. 1087-3,-3A,-4,-6,-6RE
COLLEY TOWNSHIP SULLIVAN COUNTY

PLAN

TOPOGRAPHY BY T.V.G.B. LANSE,
PHOTOGRAPHIC REPRODUCTION
DATED 11/18/98.

COORDINATES ARE BASED ON
PA. STATE PLANE.

ALL ELEVATIONS SHOWN ARE
BASED ON U.S.G.S. DATUM
N.G.V.D. 1929.

ALL DIMENSIONS AND EXISTING CONDITIONS
SHALL BE CHECKED AND VERIFIED
BY THE CONTRACTOR AT THE SITE.

DRAWN BY: <i>MSL</i>	DATE: 3-8-75	DRAWING NO.: 6 of 9
CHECKED BY: <i>MSL</i>	SCALE: AS SHOWN	