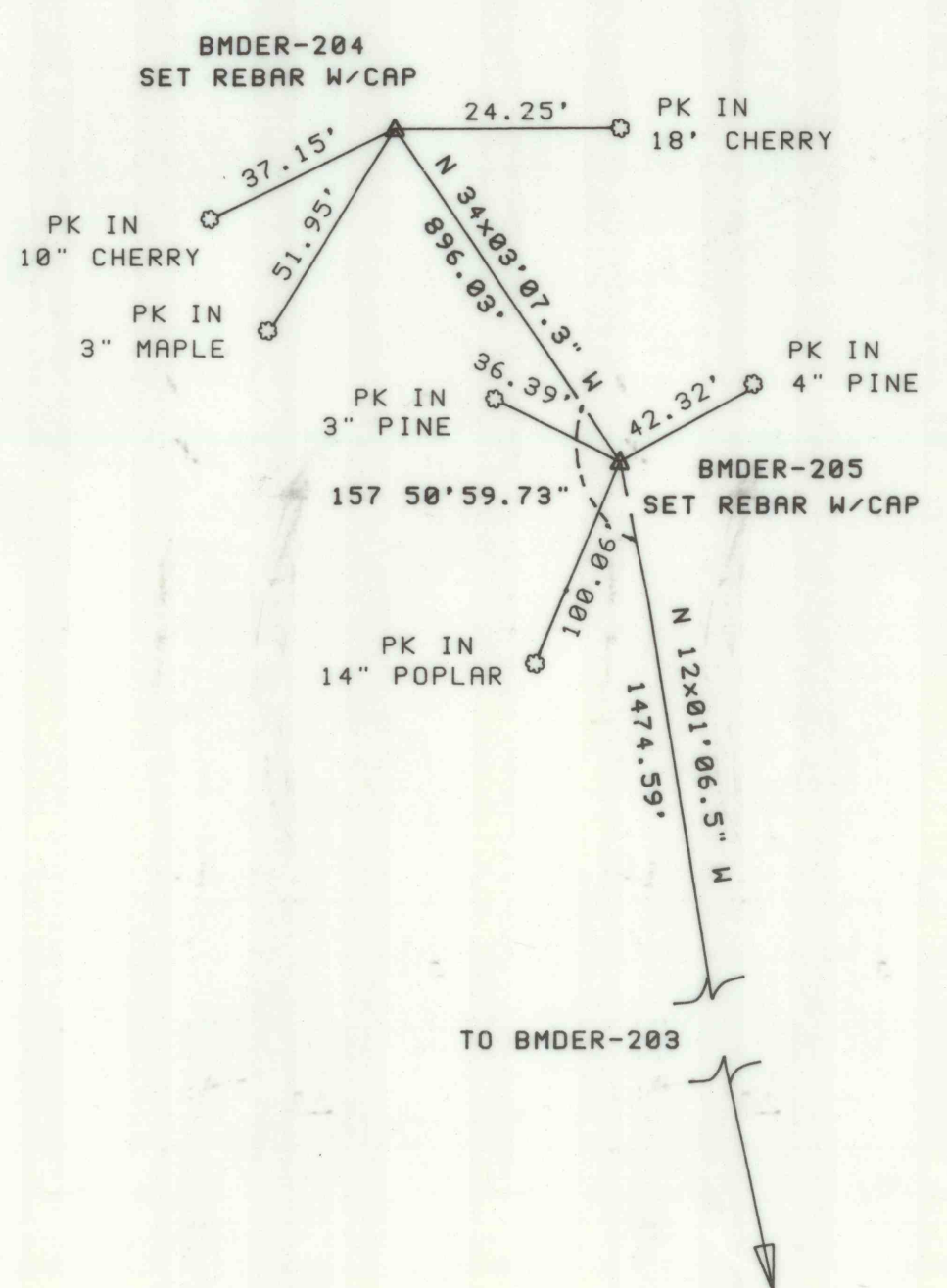




**FIORINI REALTY COMPANY**

**WHITE ASH LAND ASSOCIATION**

BENCH MARK DATA					
BH NO.	BASELINE STA.	ELEVATION	DESCRIPTION	N COORDINATE	E COORDINATE
BMDR-204	33+70.63B	1996.15	SET REBAR W/CAP	482063.79	2357477.25
BMDR-205	24+74.59B	2004.41	SET REBAR W/CAP	481321.48	2357978.98



CONSTRUCTION BASELINE CONTROL DATA



NO.	DATE	REVISION	APPR.
SUBMITTED			
<i>Michael S. Lazorcik</i>		<i>Ramona G. Davis</i>	
PROJECT ENGINEER		PROJECT COORDINATOR	
APPROVED		<i>R. Ras</i>	
		CHIEF - DIVISION OF ACID MINE DRAINAGE ABATEMENT	
APPROVED		<i>John B. B.</i>	
		DIRECTOR - BUREAU OF ABANDONED MINE RECLAMATION	



COMMONWEALTH OF PENNSYLVANIA  
DEPARTMENT OF ENVIRONMENTAL RESOURCES

CONTRACT NO. BF 325-101.1

**BOND FORFEITURE  
RECLAMATION PROJECT**  
JOHN PERCIVAL COAL COMPANY  
MINING PERMIT NOS. 1087-3,-3A,-4,-6,-6RE  
COLLEY TOWNSHIP SULLIVAN COUNTY

PLAN

TOPOGRAPHY BY T.V.G.A. LANSE, P.E. USING AERIAL PHOTOGRAPHY DATED 11/18/98.  
COORDINATES ARE BASED ON PA. STATE PLANE.  
ALL ELEVATIONS SHOWN ARE BASED ON U.S.G.S. DATUM N.G.V.D. 1929.  
ALL DIMENSIONS AND EXISTING CONDITIONS SHALL BE CHECKED AND VERIFIED BY THE CONTRACTOR AT THE SITE.

DRAWN BY	DATE	DRAWING NO.
W.G.F.	5-8-75	5 of 9
CHECKED BY	SCALE	
752	AS SHOWN	