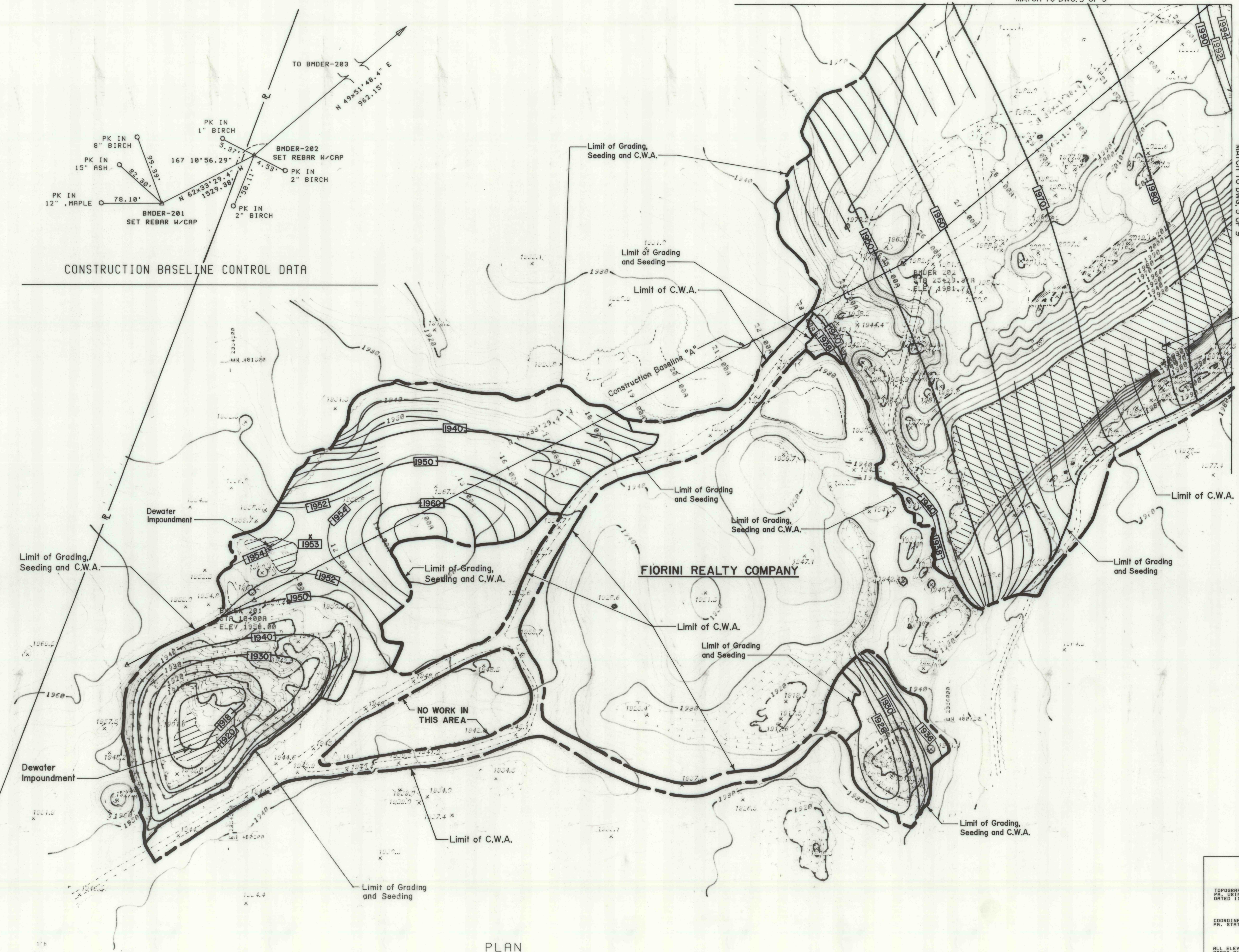


BENCH MARK DATA					
BM NO.	BASELINE STA.	ELEVATION	DESCRIPTION	N COORDINATE	E COORDINATE
BMDER-201	10+00A	1958.00	SET REBAR W/CAP	481002.85	2354551.58
BMDER-202	25+29.37A	1981.77	SET REBAR W/CAP	481707.66	2355908.07



CONSTRUCTION BASELINE CONTROL DATA

FIORINI REALTY COMPANY

NO WORK IN THIS AREA



NO.	DATE	REVISION	APPR.
SUBMITTED			
<i>Michael S. Lazorki</i>		<i>Ramona G. Davis</i>	
PROJECT ENGINEER		PROJECT COORDINATOR	
APPROVED			
<i>APPR</i>			
CHIEF - DIVISION OF ACID MINE DRAINAGE ABATEMENT			
APPROVED			
<i>M. J. Wilk</i>			
DIRECTOR - BUREAU OF ABANDONED MINE RECLAMATION			



COMMONWEALTH OF PENNSYLVANIA  
DEPARTMENT OF ENVIRONMENTAL RESOURCES

CONTRACT NO. BF 325-101.1

**BOND FORFEITURE  
RECLAMATION PROJECT**  
JOHN PERCIVAL COAL COMPANY  
MINING PERMIT NOS. 1087-3-3A, -4-6-6RE  
COLLEY TOWNSHIP SULLIVAN COUNTY

PLAN

TOPOGRAPHY BY T. V. O. B. LANSE,  
AS USING AERIAL PHOTOGRAPHY  
DATED 11/18/92.

COORDINATES ARE BASED ON  
PA STATE PLANE.

ALL ELEVATIONS SHOWN ARE  
BASED ON U.S.G.S. DATUM  
N.G.V.D. 1929.

ALL DIMENSIONS AND EXISTING CONDITIONS  
SHALL BE CHECKED AND VERIFIED  
BY THE CONTRACTOR AT THE SITE.

DRAWN BY	DATE	DRAWING NO.
R. ROY	5-8-95	4 of 9
CHECKED BY	SCALE	
MSL	AS SHOWN	