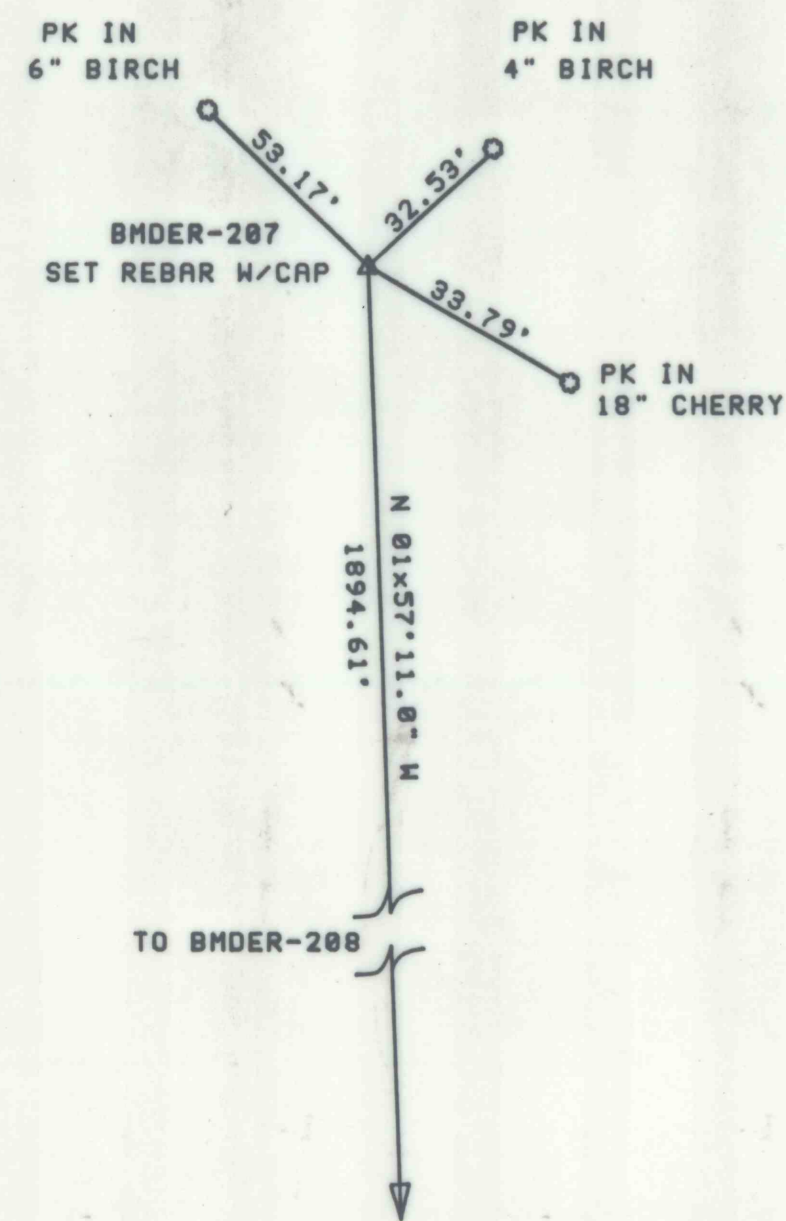
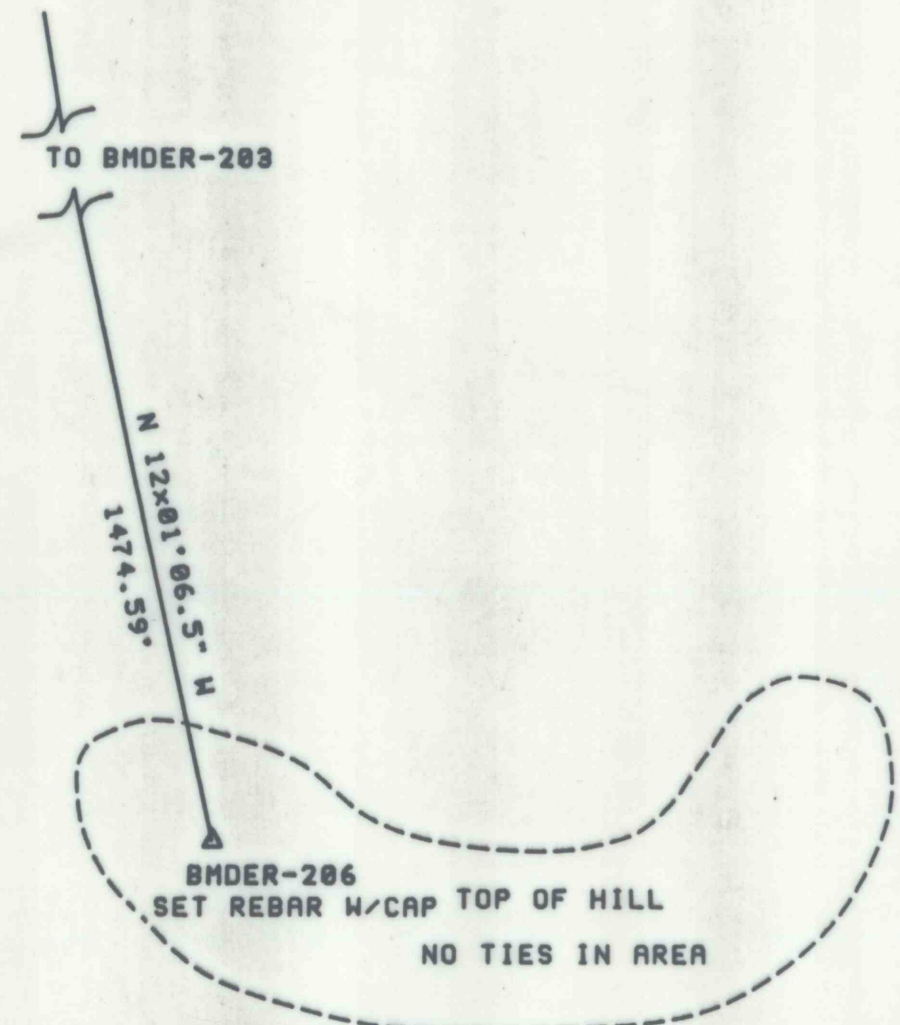
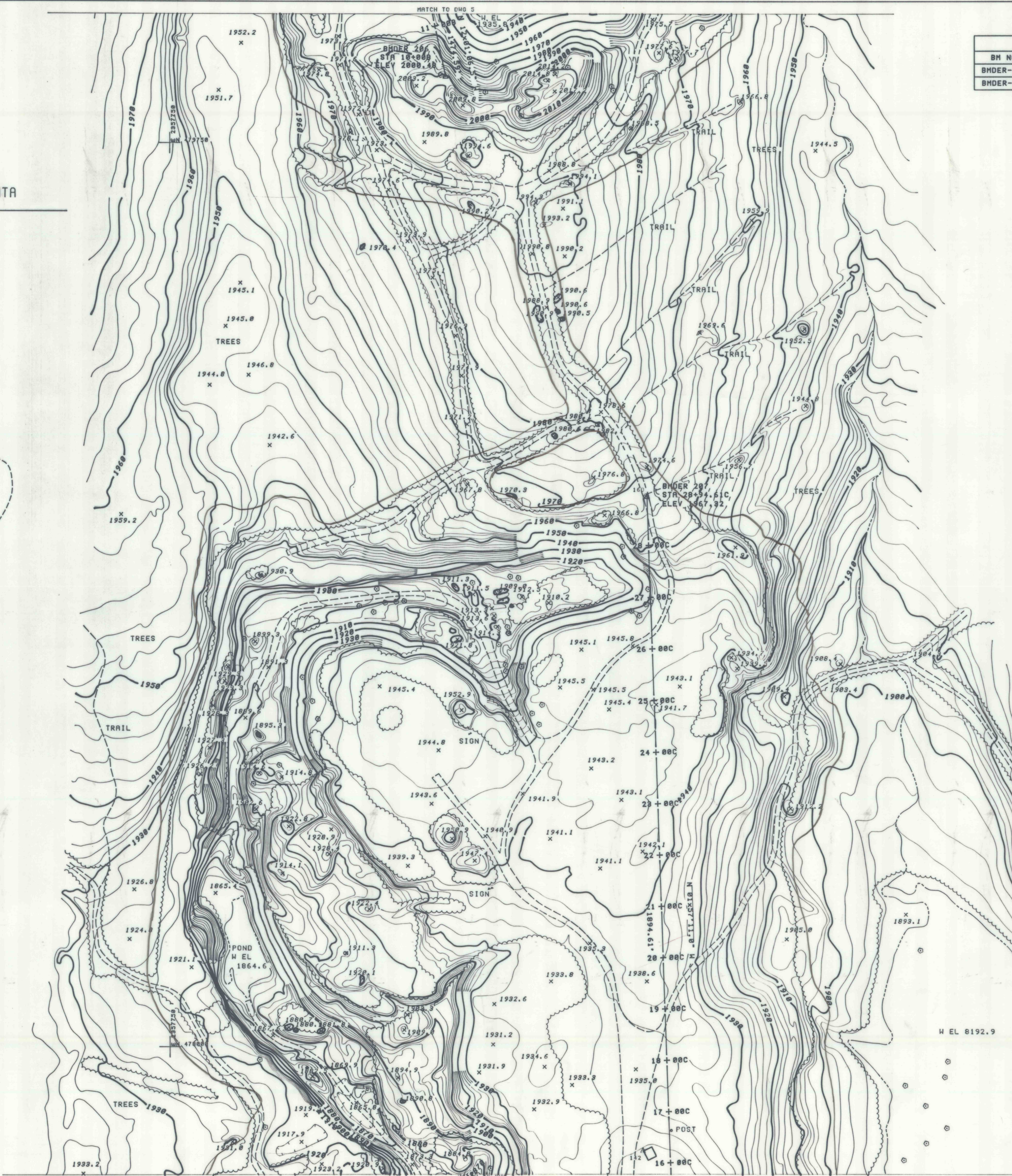


CONSTRUCTION BASELINE CONTROL DATA



BENCH MARK DATA					
BH NO.	BASELINE STA.	ELEVATION	DESCRIPTION	N COORDINATE	E COORDINATE
BMDER-206	STA 18+00B	2000.48	SET REBAR W/CAP	479879.13	2358286.03
BMDER-207	STA 28+94.61C	1967.32	SET REBAR W/CAP	479866.85	2358677.97



NO.	DATE	REVISION	APPR.

SUBMITTED

PROJECT ENGINEER _____ PROJECT COORDINATOR _____

APPROVED

CHIEF - DIVISION OF ACID MINE DRAINAGE ABATEMENT

APPROVED

DIRECTOR - BUREAU OF ABANDONED MINE RECLAMATION

COMMONWEALTH OF PENNSYLVANIA
DEPARTMENT OF ENVIRONMENTAL RESOURCES

CONTRACT NO. BF 325-101.1

COLLEY TOWNSHIP SULLIVAN COUNTY

PLAN

DRAWN BY	DATE	DRAWING NO.
CHECKED BY	SCALE AS SHOWN	6

TOPOGRAPHY BY T. V. G. O. LANGE,
24 USING AERIAL PHOTOGRAPHY
DATED 11/10/59.

COORDINATES ARE BASED ON
PA. STATE PLANE.

ALL ELEVATIONS SHOWN ARE
BASED ON U.S.G.S. DATUM
N.O.V.D. 1929.

ALL DIMENSIONS AND EXISTING CONDITIONS
SHALL BE CHECKED AND VERIFIED
BY THE CONTRACTOR AT THE SITE.



H EL 8192.9