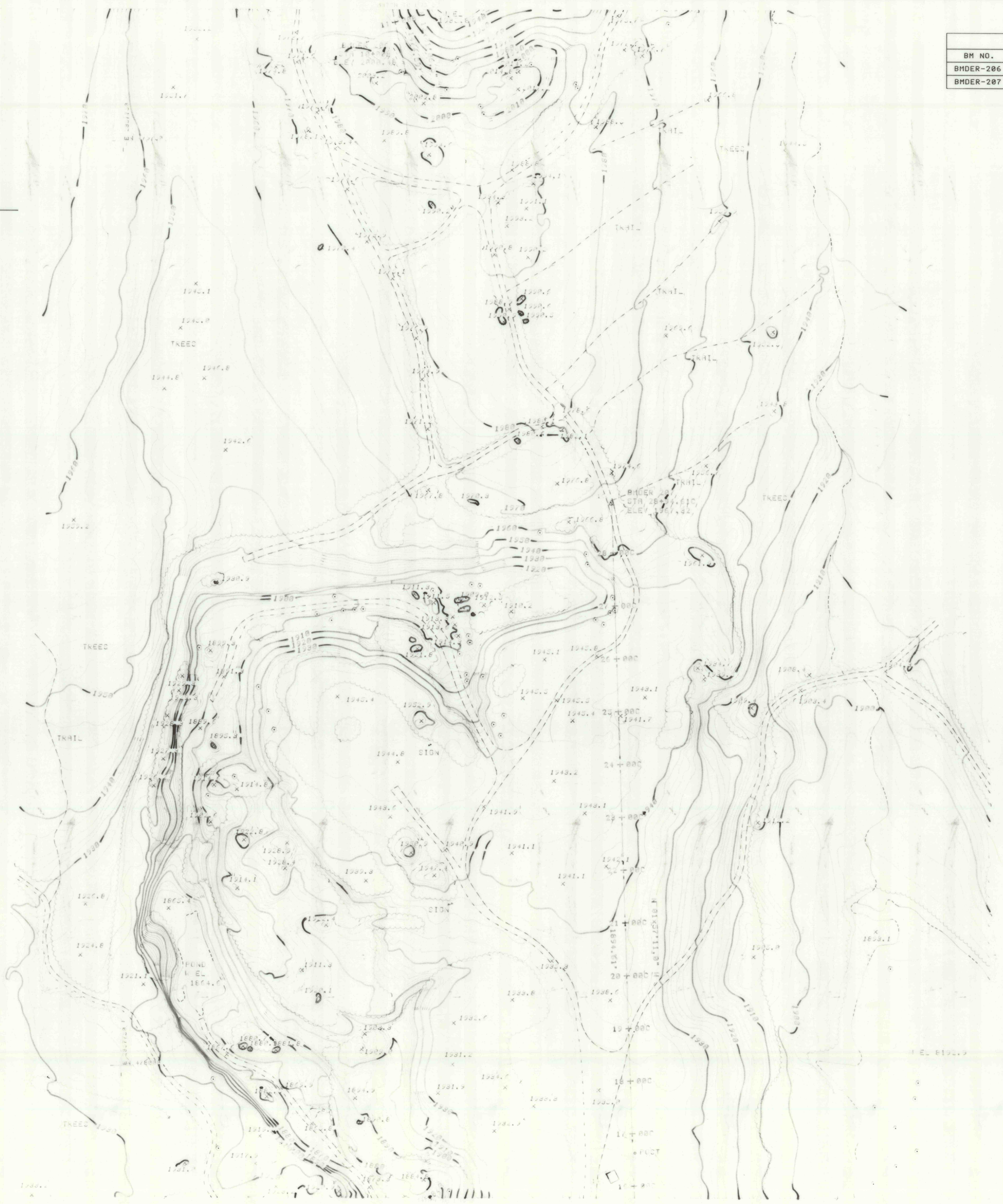
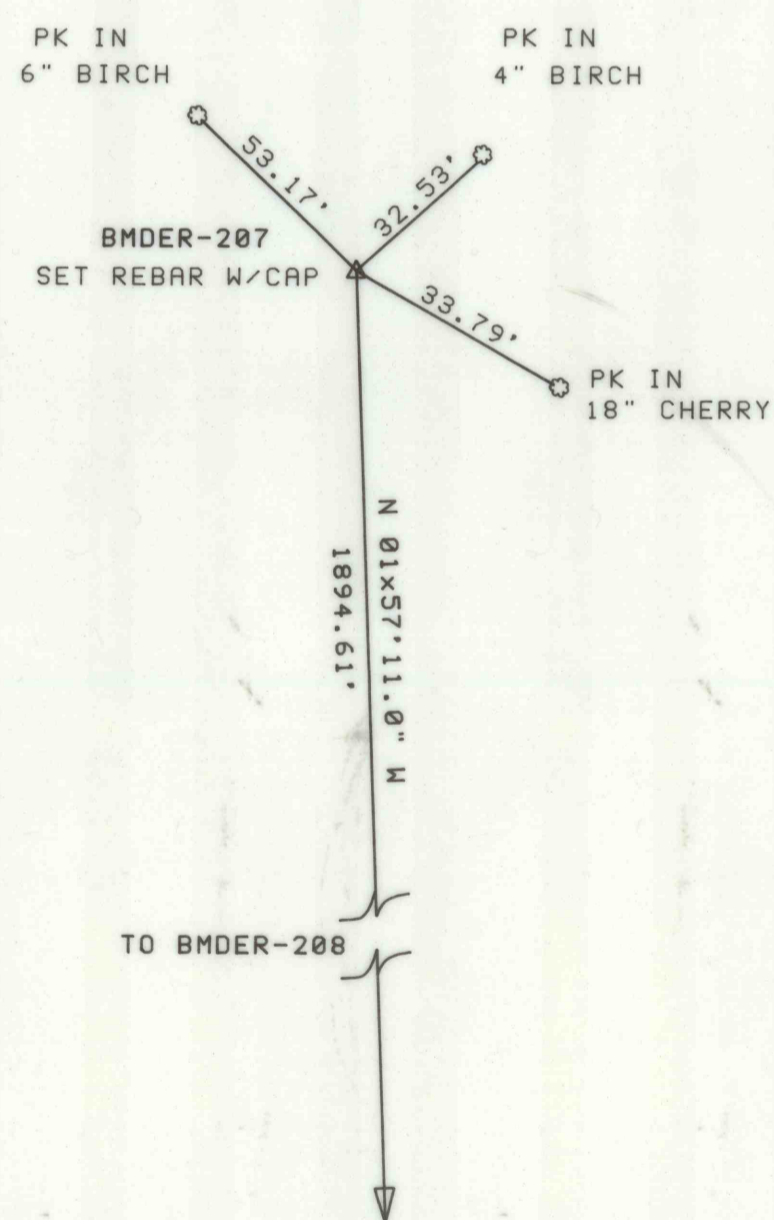
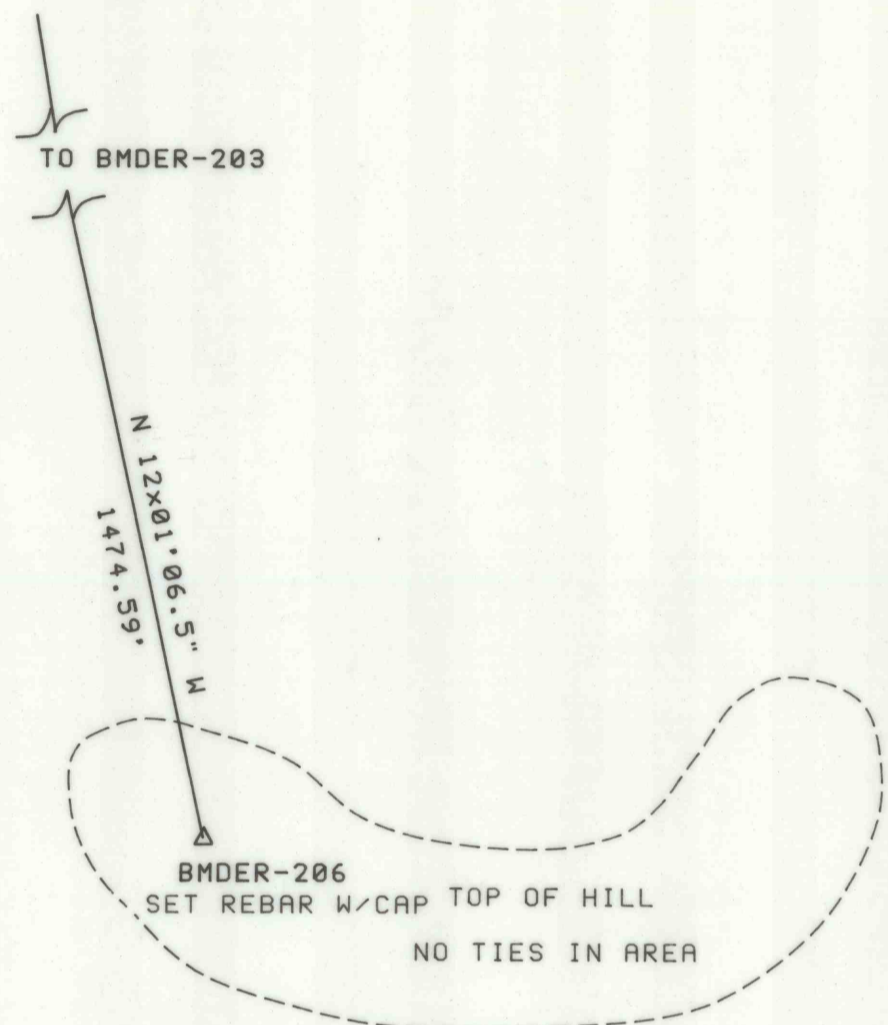


BENCH MARK DATA					
BM NO.	BASELINE STA.	ELEVATION	DESCRIPTION	N COORDINATE	E COORDINATE
BMDER-206	STA 10+00B	2000.48	SET REBAR W/CAP	479879.13	2358286.03
BMDER-207	STA 28+94.61C	1967.32	SET REBAR W/CAP	479066.85	2358677.37

CONSTRUCTION BASELINE CONTROL DATA



NO.	DATE	REVISION	APPR.

SUBMITTED _____
 PROJECT ENGINEER PROJECT COORDINATOR
 APPROVED _____
 CHIEF - DIVISION OF ACID MINE DRAINAGE ABATEMENT
 APPROVED _____
 DIRECTOR - BUREAU OF ABANDONED MINE RECLAMATION

COMMONWEALTH OF PENNSYLVANIA
 DEPARTMENT OF ENVIRONMENTAL RESOURCES

CONTRACT NO. BF 325-101.1

COLLEY TOWNSHIP SULLIVAN COUNTY

PLAN

TOPOGRAPHY BY T.V.G.A. LANSE,
 DATED 11/18/92.
 COORDINATES ARE BASED ON
 PA. STATE PLANE.
 ALL ELEVATIONS SHOWN ARE
 BASED ON U.S.G.S. DATUM
 N.G.V.D. 1929.
 ALL DIMENSIONS AND EXISTING CONDITIONS
 SHALL BE CHECKED AND VERIFIED
 BY THE CONTRACTOR AT THE SITE.



DRAWN BY	DATE	DRAWING NO.
CHECKED BY	SCALE AS SHOWN	6