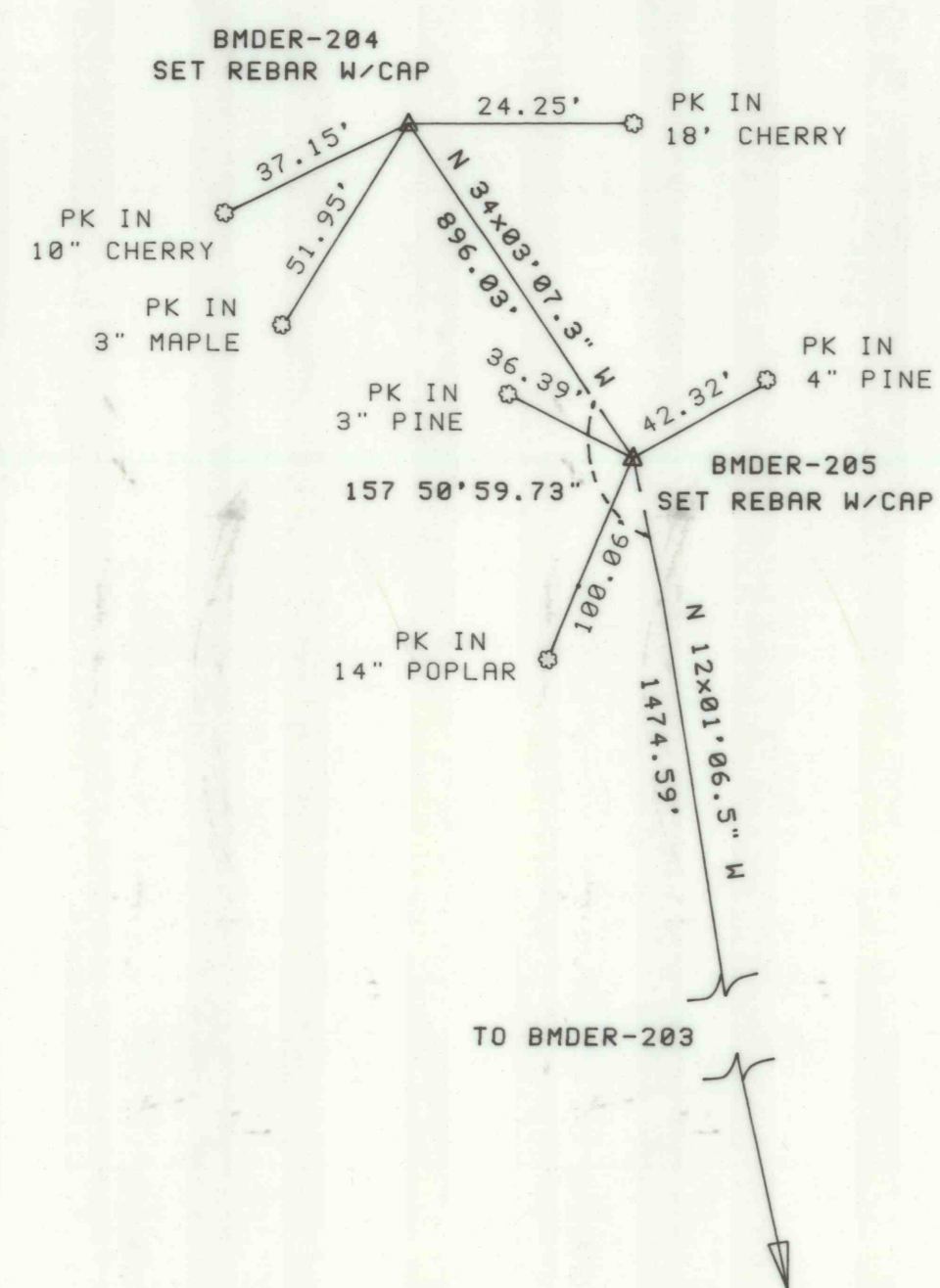


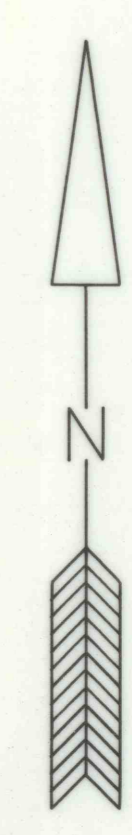
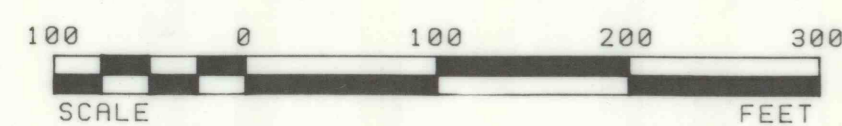


| BENCH MARK DATA | | | | | |
|-----------------|---------------|-----------|-----------------|--------------|--------------|
| BM NO. | BASELINE STA. | ELEVATION | DESCRIPTION | N COORDINATE | E COORDINATE |
| BMDR-204 | 33+70.63B | 1996.15 | SET REBAR W/CAP | 482063.79 | 2357477.25 |
| BMDR-205 | 24+74.59B | 2004.41 | SET REBAR W/CAP | 481321.40 | 2357978.98 |



CONSTRUCTION BASELINE CONTROL DATA

PLAN



| NO. | DATE | REVISION | APPR. |
|-----|------|----------|-------|
| | | | |
| | | | |
| | | | |

SUBMITTED _____
 PROJECT ENGINEER PROJECT COORDINATOR
 APPROVED _____
 CHIEF - DIVISION OF ACID MINE DRAINAGE ABATEMENT
 APPROVED _____
 DIRECTOR - BUREAU OF ABANDONED MINE RECLAMATION

COMMONWEALTH OF PENNSYLVANIA
DEPARTMENT OF ENVIRONMENTAL RESOURCES

CONTRACT NO. BF 325-101.1

COLLEY TOWNSHIP SULLIVAN COUNTY

PLAN

TOPOGRAPHY BY T.V.D.B. LANDE,
PA, USING AERIAL PHOTOGRAPHY
DATED 11/10/98.

COORDINATES ARE BASED ON
PA. STATE PLANE.

ALL ELEVATIONS SHOWN ARE
BASED ON U.S.G.S. DATUM
N.A.T.D. 1989.
ALL DIMENSIONS AND EXISTING CONDITIONS
SHALL BE CHECKED AND VERIFIED
BY THE CONTRACTOR AT THE SITE.

| | | |
|------------|-------------------|-------------|
| DRAWN BY | DATE | DRAWING NO. |
| CHECKED BY | SCALE AS SHOWN | 5 |