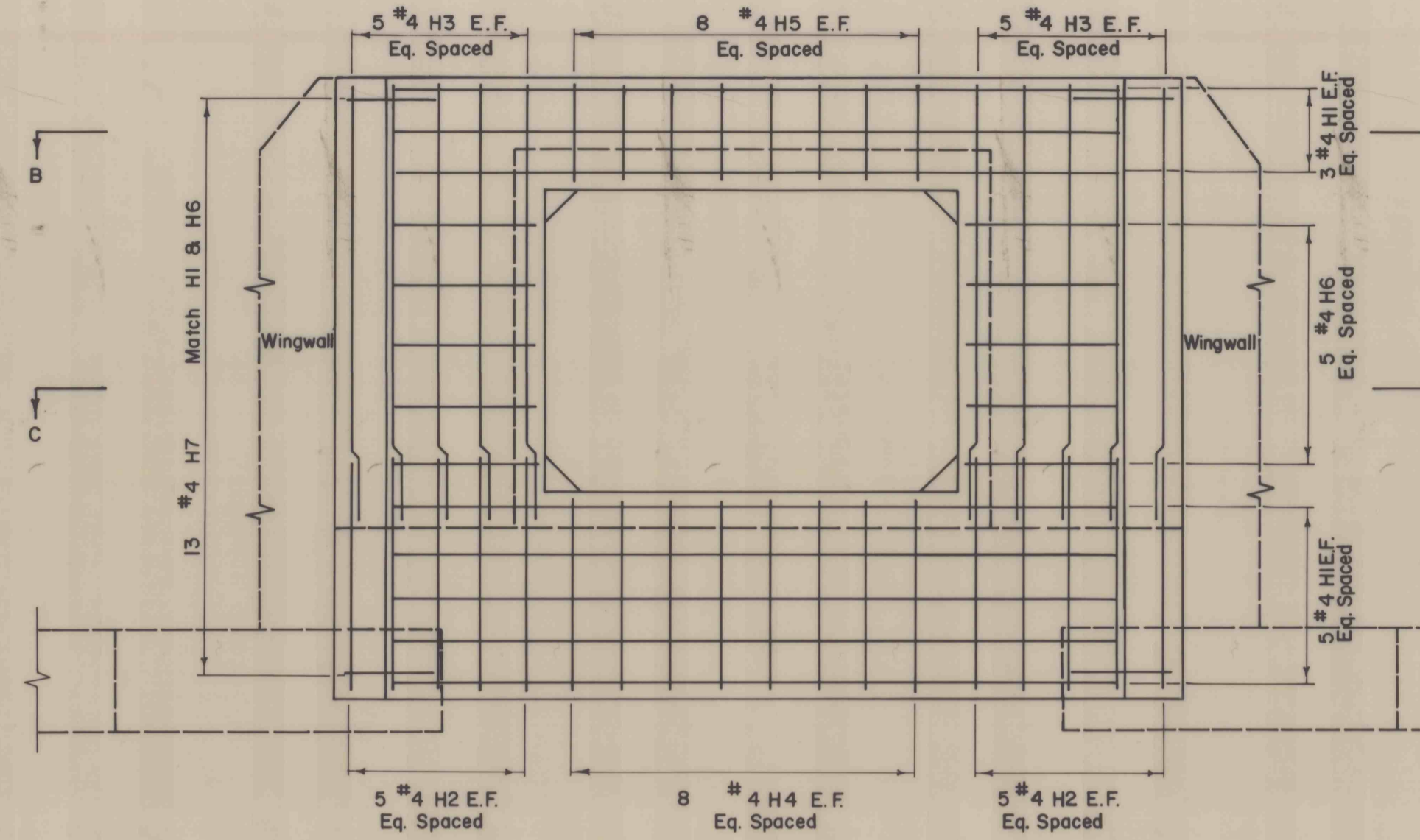
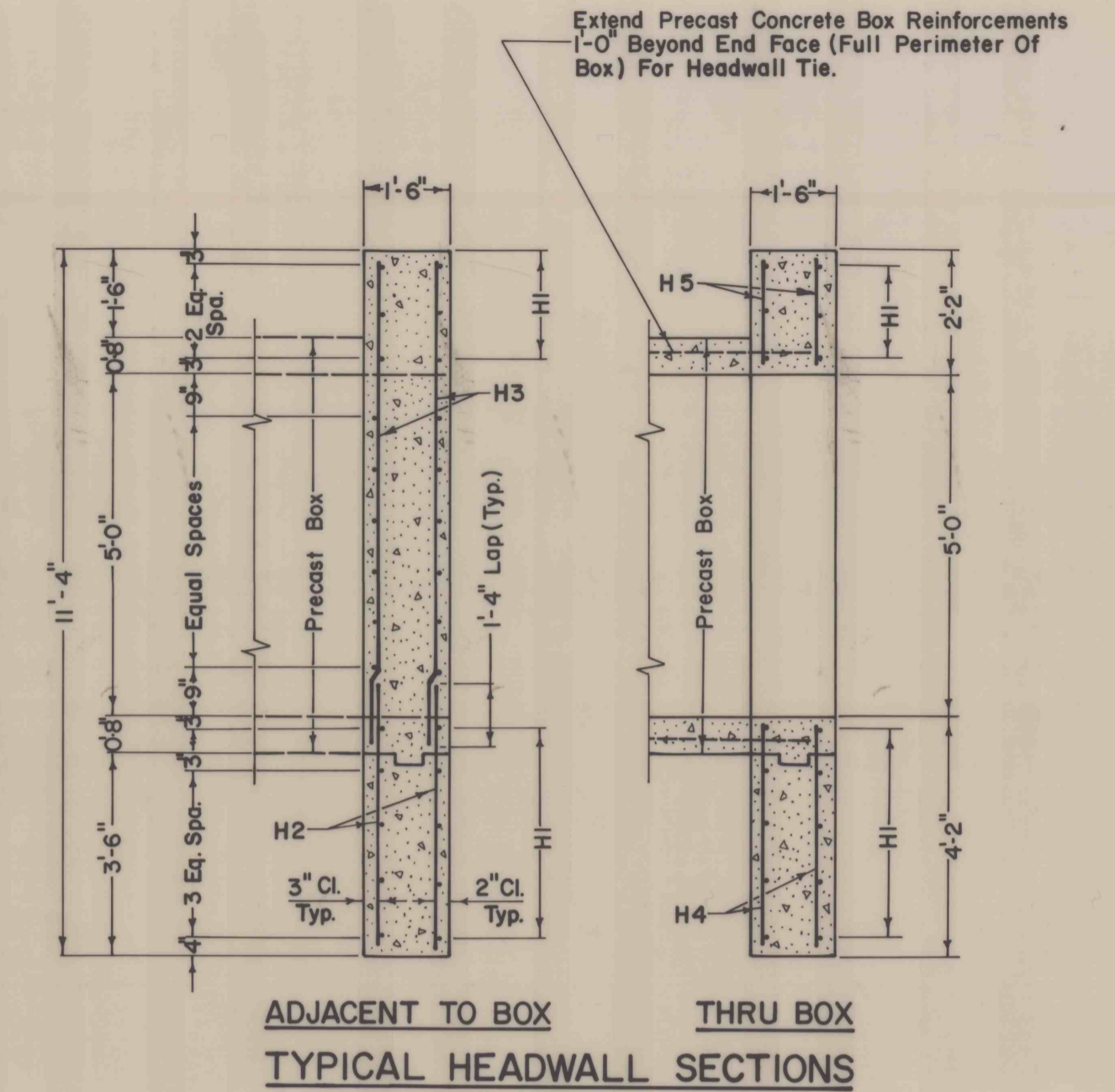


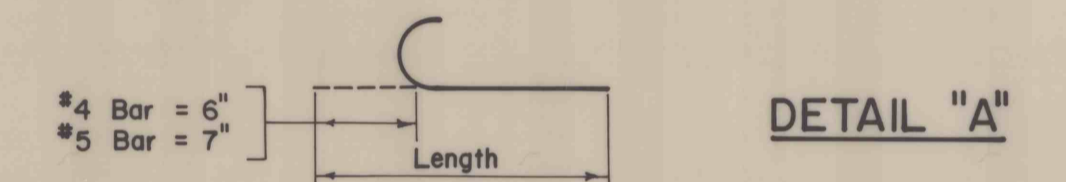
PLAN OF HEADWALL



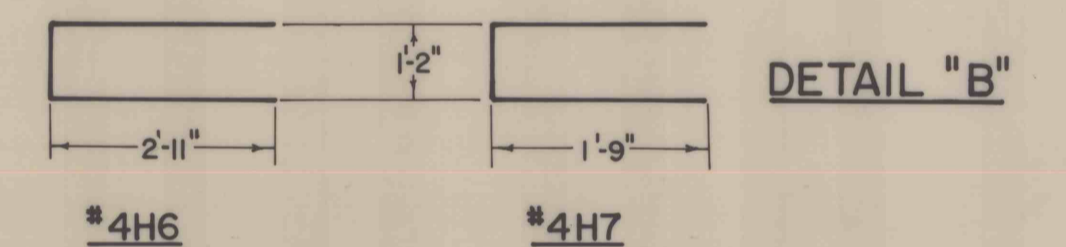
HEADWALL SECTION A-A



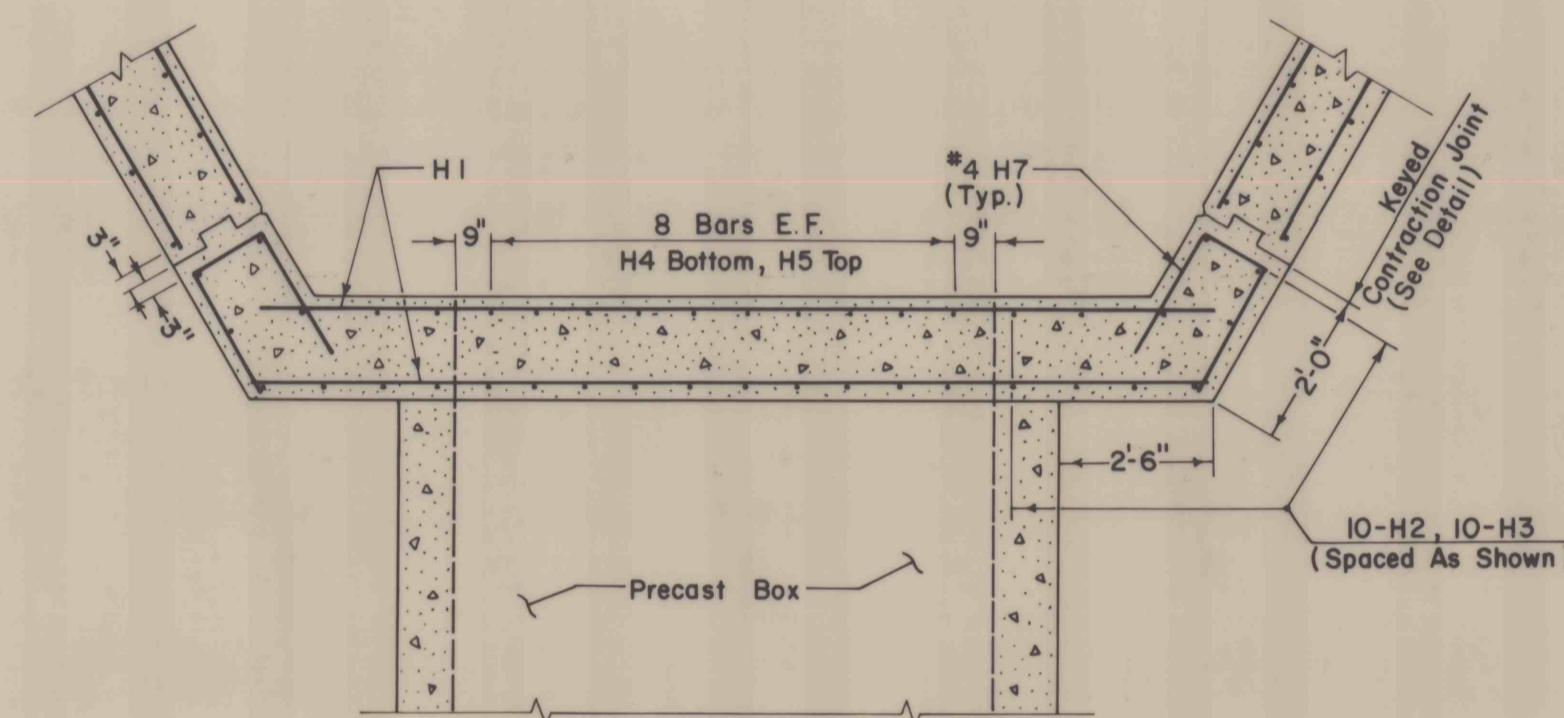
ADJACENT TO BOX THRU BOX TYPICAL HEADWALL SECTIONS



DETAIL "A"



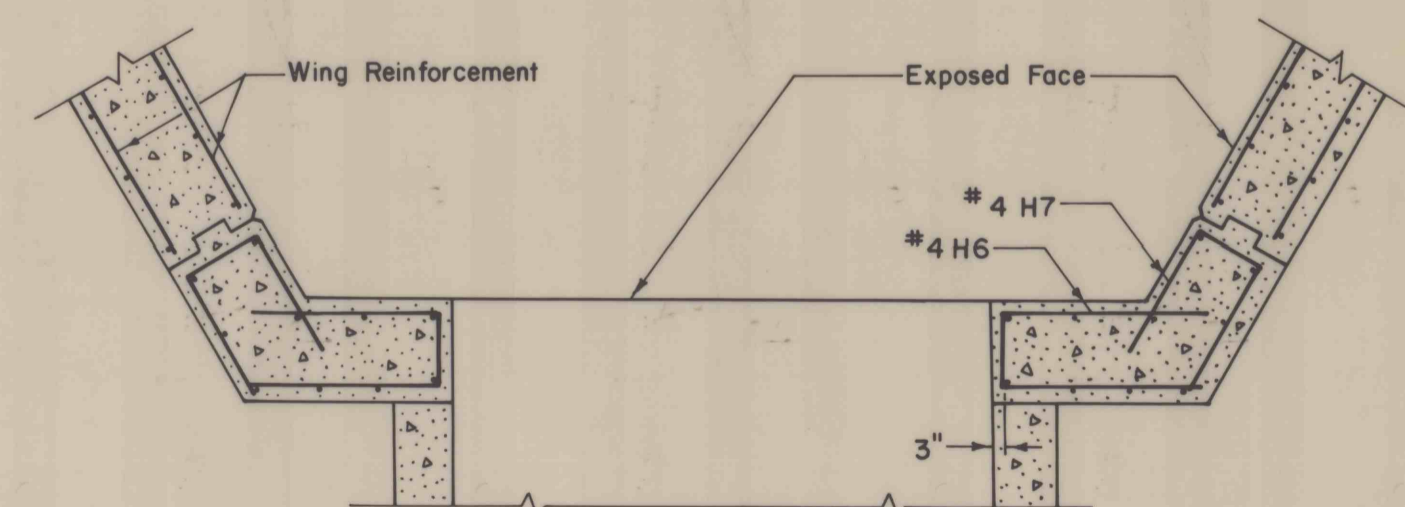
DETAIL "B"



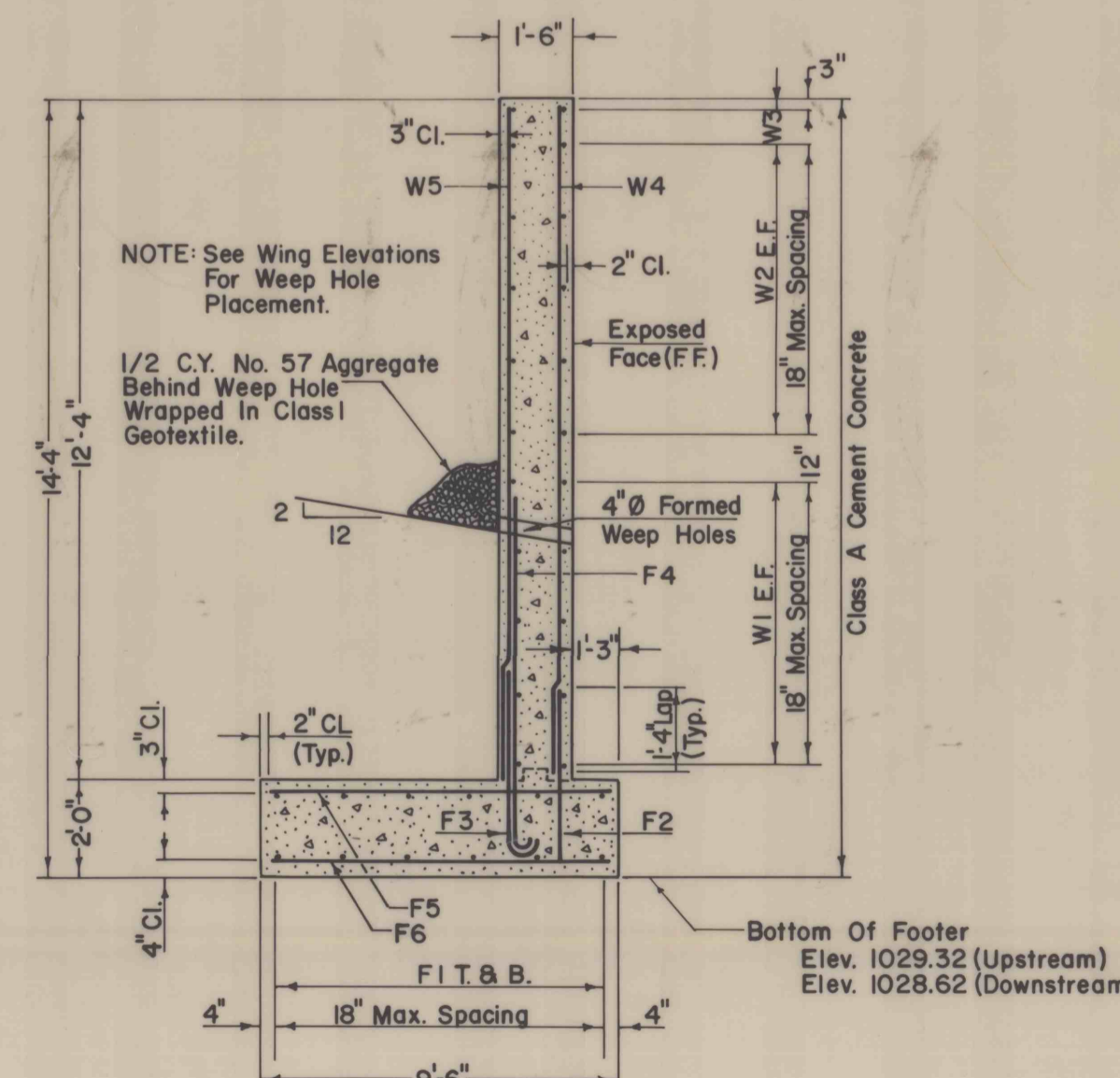
TYPICAL TOP & BOTTOM EACH SPAN SECTION B-B

REINFORCING BAR SCHEDULE (BOTH HEADWALLS)				
MARK	NO.	SIZE	LENGTH	REMARKS
#4H1	32	4	14'-4"	
#4H2	40	4	4'-9"	
#4H3	40	4	7'-8"	
#4H4	32	4	4'-2"	
#4H5	32	4	2'-2"	
#4H6	20	4	7'-0"	SEE DETAIL B
#4H7	52	4	4'-8"	SEE DETAIL B

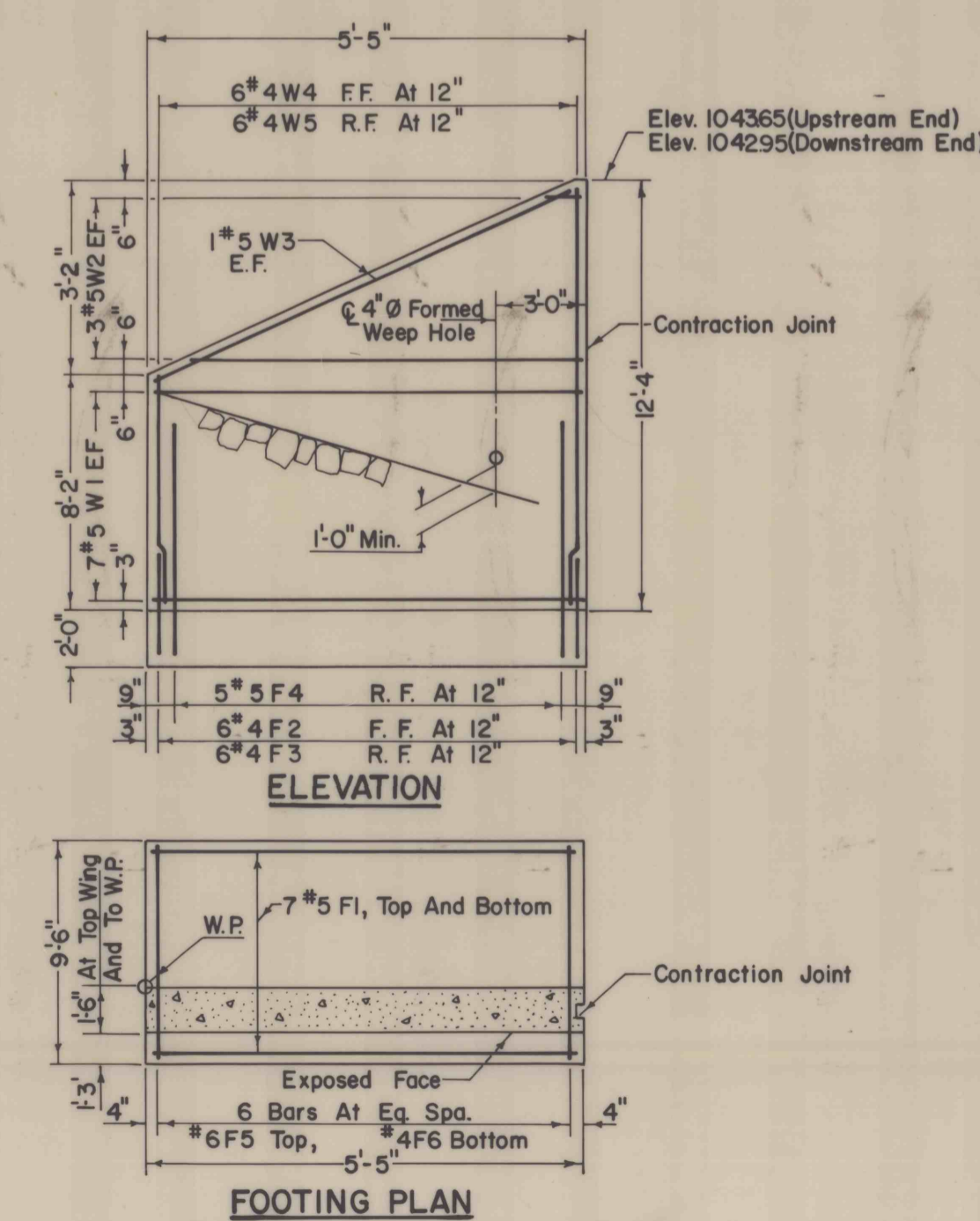
REINFORCING BAR SCHEDULE (FOUR WINGWALLS)				
MARK	NO.	SIZE	LENGTH	REMARKS
#5F1	56	5	5'-1"	
#4F2	24	4	3'-2"	
#4F3	24	4	3'-8"	SEE DETAIL A
#5F4	20	5	8'-8"	SEE DETAIL A
#6F5	24	6	9'-2"	
#4F6	24	4	9'-2"	
#5W1	56	5	5'-2"	
#5W2	24	5	4'-5" To 1'-0" Vary 2 Ea. By 2'-3"	
#5W3	8	5	6'-0"	
#4W4	24	4	12'-2" To 9'-0" Vary 1 Ea. By 7 7/8"	
#4W5	24	4	12'-2" To 9'-0" Vary 1 Ea. By 7 7/8"	



WINGWALL CORNERS SECTION C-C



TYPICAL WINGWALL SECTION



TYPICAL WINGWALL

NO.	DATE	REVISION	APPR.
SUBMITTED <i>Dennis M. Ballardino</i> PROJECT DESIGNER, WILKES-BARRE			
APPROVED <i>Thedore J. Fisher</i> CHIEF, DESIGN SECTION, WILKES-BARRE			
APPROVED _____ DIRECTOR, BUREAU OF ABANDONED MINE RECLAMATION			
COMMONWEALTH OF PENNSYLVANIA DEPARTMENT OF ENVIRONMENTAL RESOURCES			
PROJECT NO. O S M 54(3629)103.1 BACKFILLING STRIP PITS AND SLOPES HECKSCHERVILLE CASS TOWNSHIP SCHUYLKILL COUNTY, PENNSYLVANIA			
CROSS SECTIONS AND DETAILS			
DRAWN BY <i>gds</i>	DATE Aug. 9, 1990	DRAWING NO. 7 of 10	
CHECKED BY <i>vjo</i>	SCALE Not To Scale		

ALL DIMENSIONS AND EXISTING CONDITIONS SHALL BE CHECKED AND VERIFIED BY CONTRACTOR AT THE SITE.