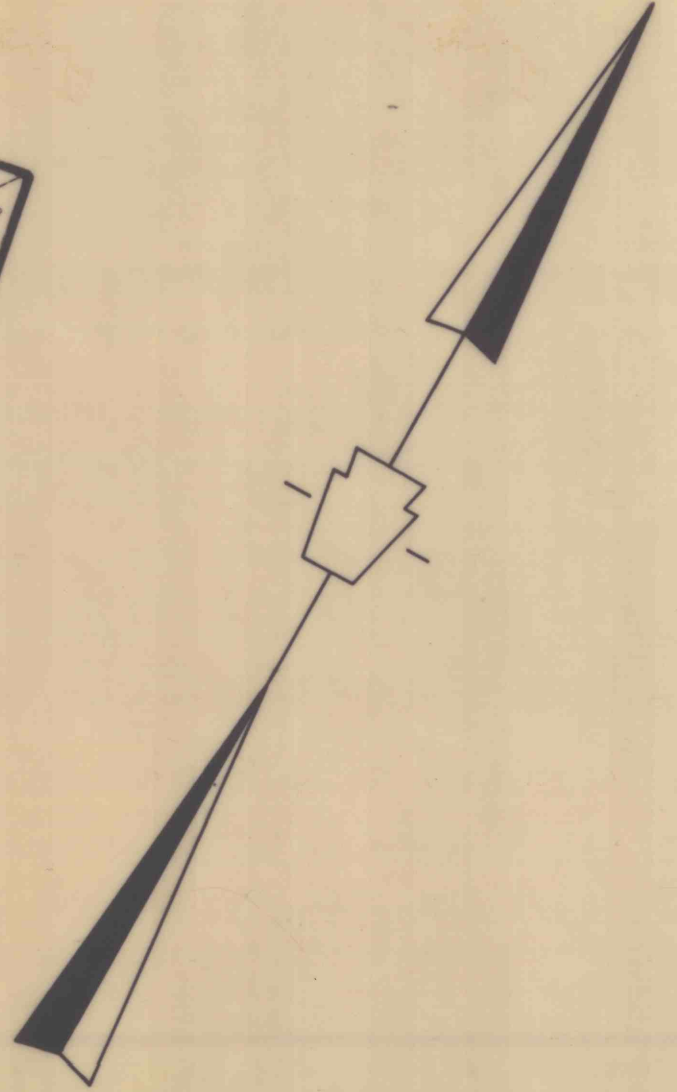
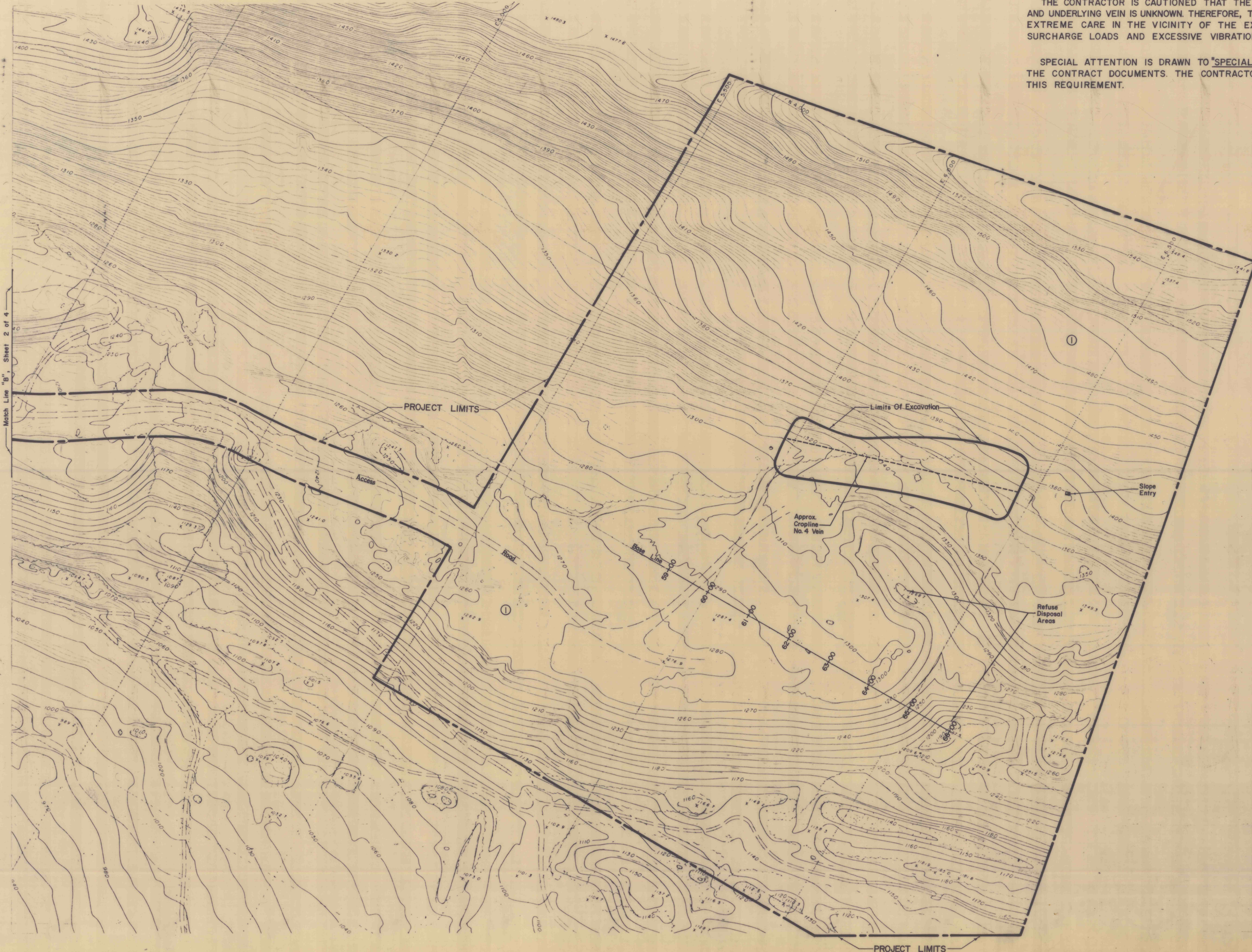


CAUTION

THE CONTRACTOR IS CAUTIONED THAT THE STABILITY OF THE BURNING REFUSE AND UNDERLYING VEIN IS UNKNOWN. THEREFORE, THE CONTRACTOR SHALL EXERCISE EXTREME CARE IN THE VICINITY OF THE EXCAVATION AREA BY AVOIDING LARGE SURCHARGE LOADS AND EXCESSIVE VIBRATION LOADINGS.

SPECIAL ATTENTION IS DRAWN TO "SPECIAL REQUIREMENT NO. 7 - SAFETY" IN THE CONTRACT DOCUMENTS. THE CONTRACTOR SHALL STRICTLY ADHERE TO THIS REQUIREMENT.

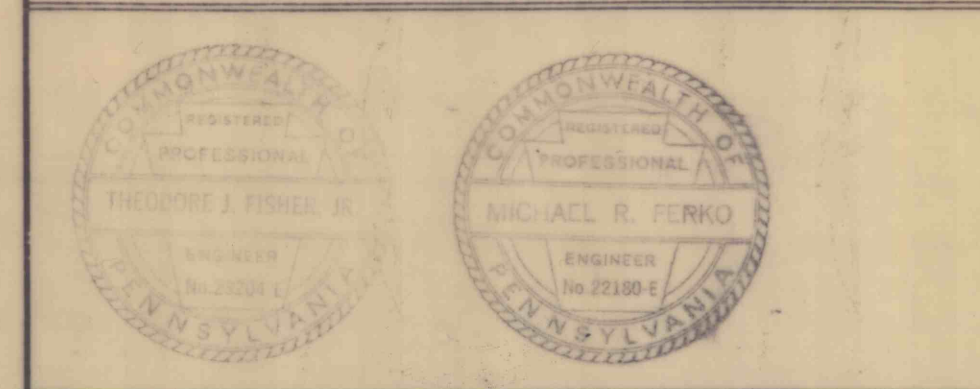


NO.	DATE	REVISION	APPR.

SUBMITTED *Charles J. Fisher*
 CHIEF, DESIGN SECTION, WILKES-BARRE

APPROVED *Michael R. Ferko*
 DISTRICT ENGINEER, WILKES-BARRE

APPROVED _____
 DIRECTOR, BUREAU OF ABANDONED MINE RECLAMATION



COMMONWEALTH OF PENNSYLVANIA
 DEPARTMENT OF ENVIRONMENTAL RESOURCES
 OFFICE OF RESOURCES MANAGEMENT

PROJECT NO. OSM 49(2068)101.1

REFUSE REMOVAL
GLEN BURN MINE FIRE
 CAMERON COLLIERY, COAL TOWNSHIP
 NORTHUMBERLAND COUNTY, PENNSYLVANIA

SURFACE MAP

ALL DIMENSIONS AND EXISTING CONDITIONS SHALL BE CHECKED AND VERIFIED BY CONTRACTOR AT THE SITE.

DRAWN BY *gof* DATE June 10, 1988 DRAWING NO. 3 of 4
 CHECKED BY *C.F.* SCALE 1 in. = 100 ft.