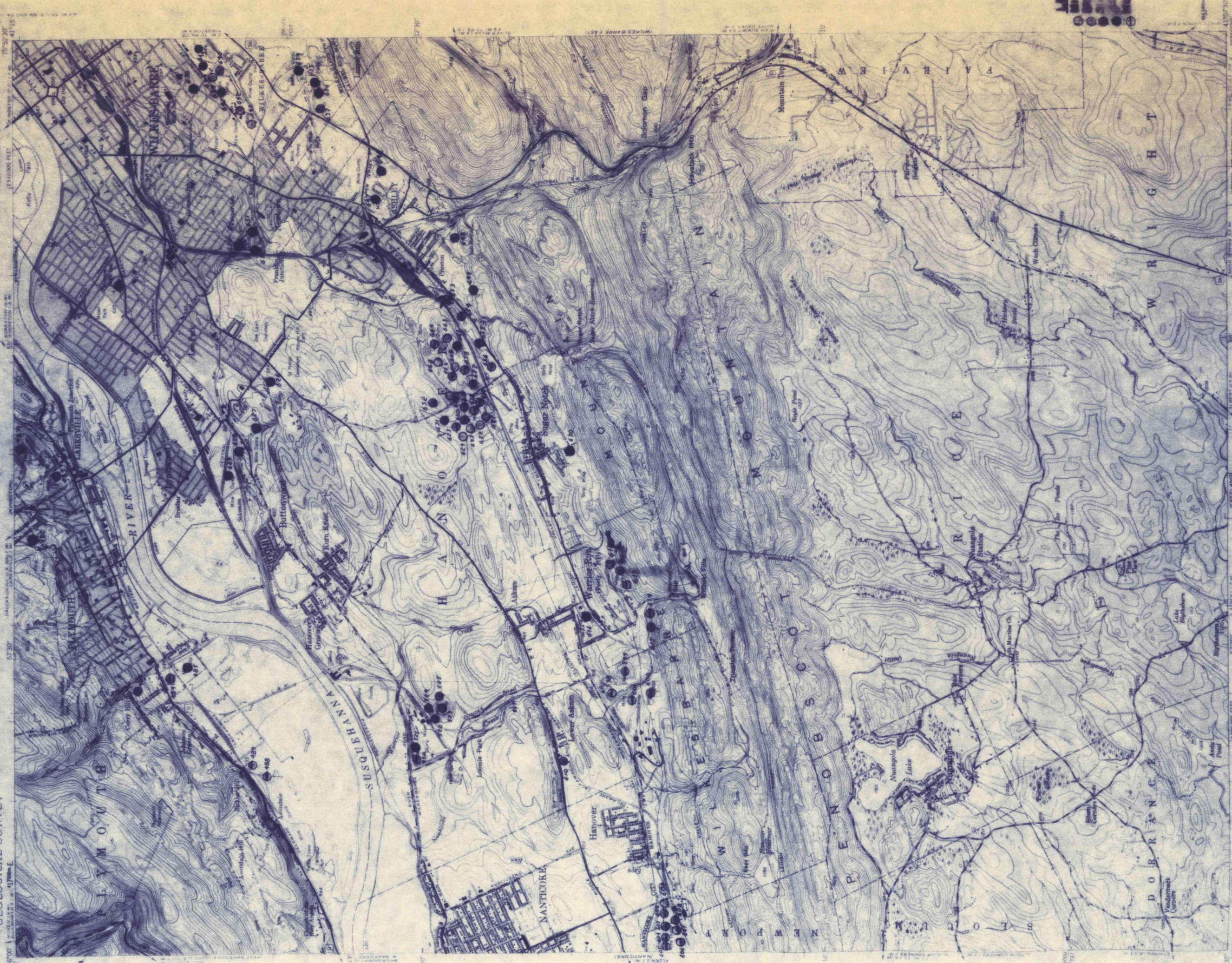


WILKES-BARRE WEST QUADRANGLE
PENNSYLVANIA-LUZERNE CO
7.5 MINUTE SERIES (TOPOGRAPHIC)
N 71/4 WILKES-BARRE 15 QUADRANGLE

UNITED STATES
DEPARTMENT OF THE INTERIOR
GEOLOGICAL SURVEY



Mapped, edited, and published by the Geological Survey
Control by USGS and USC&GS
Topography from aerial photographs by multiplex methods
Aerial photographs taken 1942. Field check 1947
Polyconic projection. 1927 North American datum
10,000-foot grid based on Pennsylvania coordinate system,
north zone
Red tint indicates areas in which only
landmark buildings are shown
Contours in strip mine and mine dump areas
compiled from 1942 photography
1,000-meter Universal Transverse Mercator grid ticks,
zone 18, shown in blue



ROAD CLASSIFICATION
ROAD SURFACE ALL WEATHER ROADS OR WEATHER ROADS
Heavy-duty ————— Paved
Medium-duty ————— Unimproved dirt
Loose-surface, graded, or narrow hard-surface
□ U.S. Route ○ State Route

WILKES-BARRE WEST, PA.
N 71/4 WILKES-BARRE 15 QUADRANGLE
N 107 5-W 7562-577 5
1947

THIS MAP COMPLIES WITH NATIONAL MAP ACCURACY STANDARDS
FOR SALE BY U.S. GEOLOGICAL SURVEY, WASHINGTON 25, D. C.
A FOLDER DESCRIBING TOPOGRAPHIC MAPS AND SYMBOLS IS AVAILABLE ON REQUEST