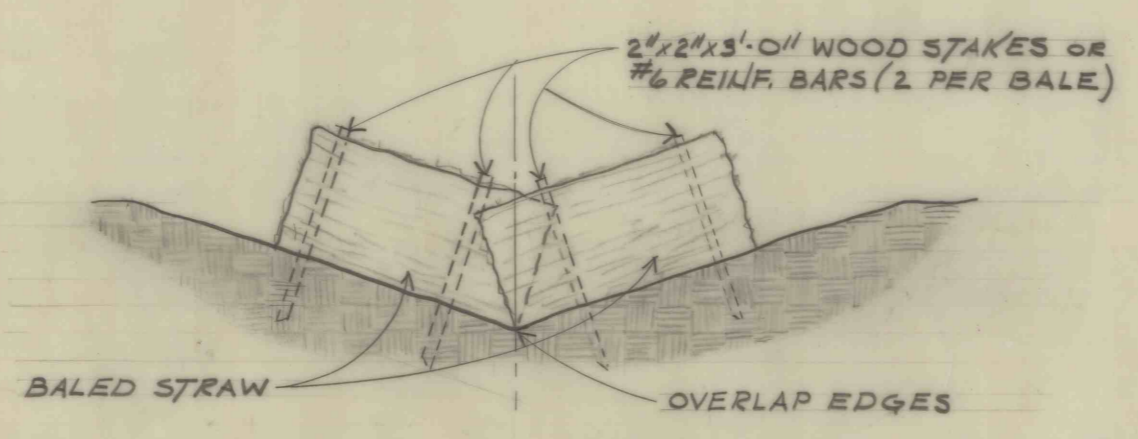
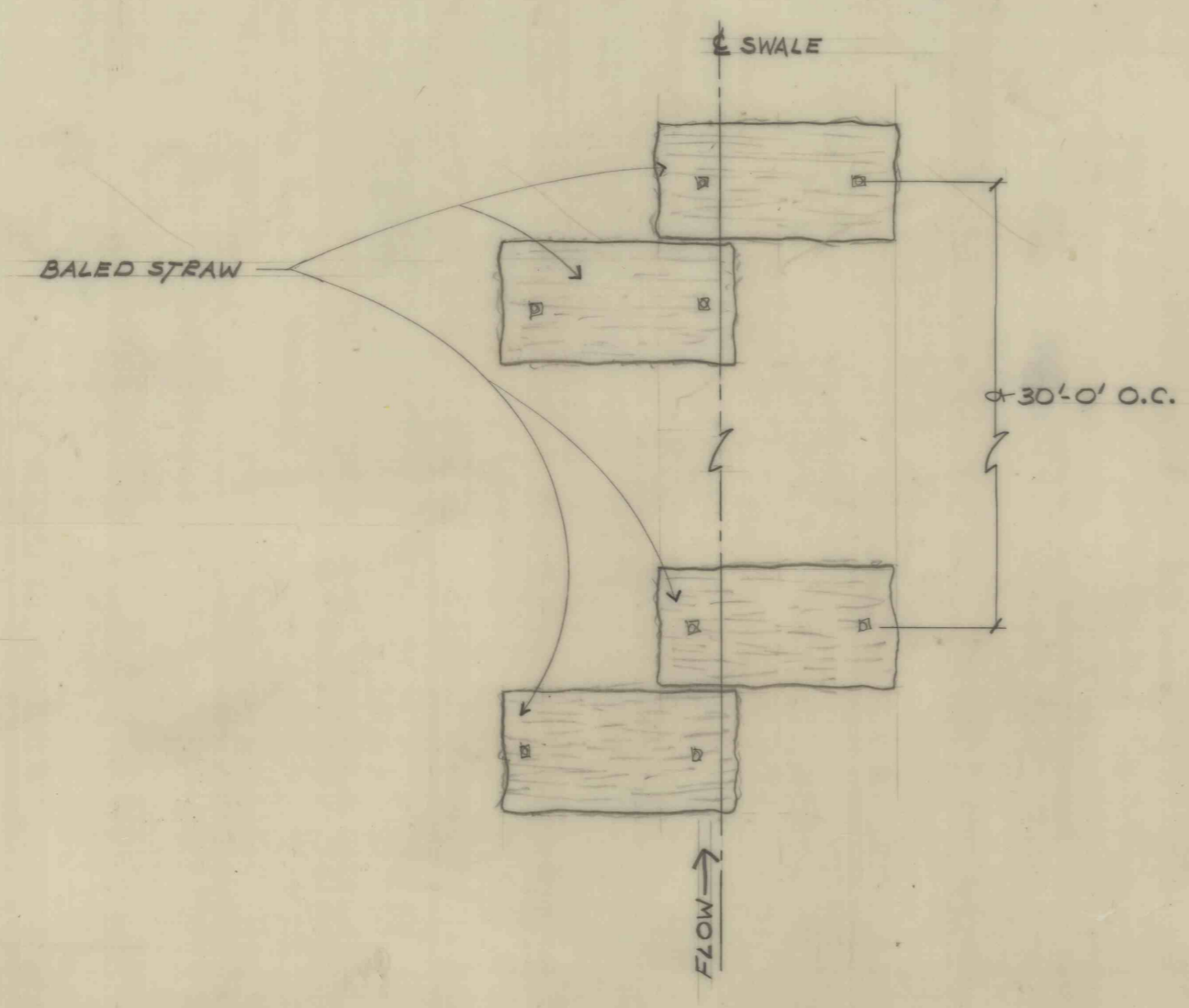


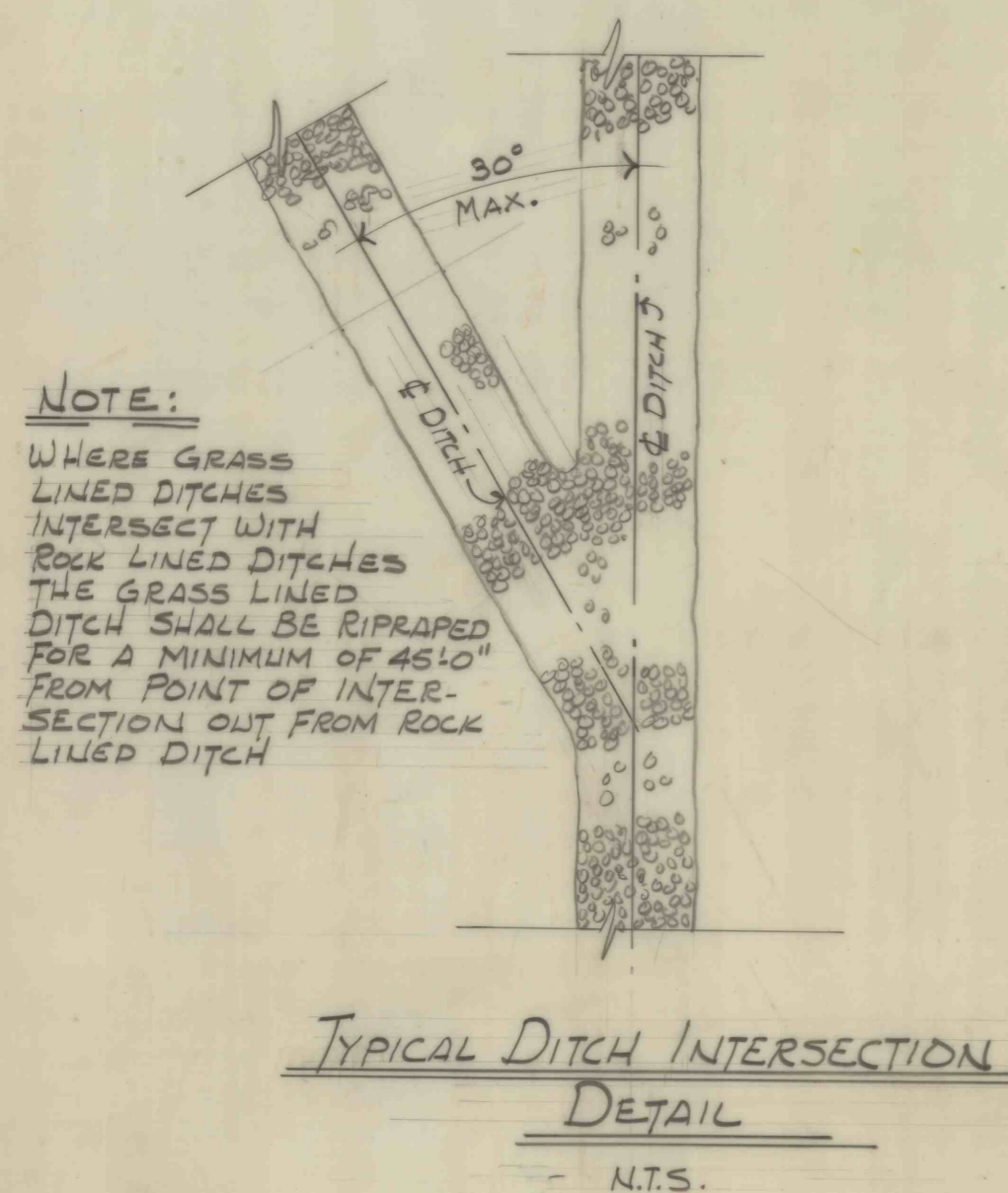
NOTE
TO BE USED IN DITCHES, SWALES, AND WHERE THE EXISTING GROUND SLOPES TOWARD THE EMBANKMENT AS DIRECTED BY THE ENGINEER.



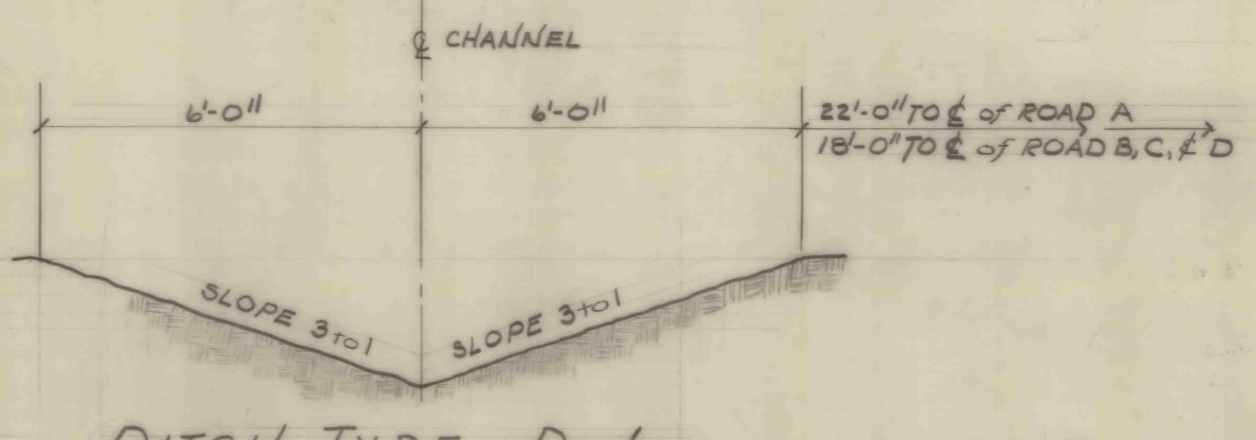
ELEVATION



TYPICAL BALED STRAW BARRIER DETAIL
N.T.S.

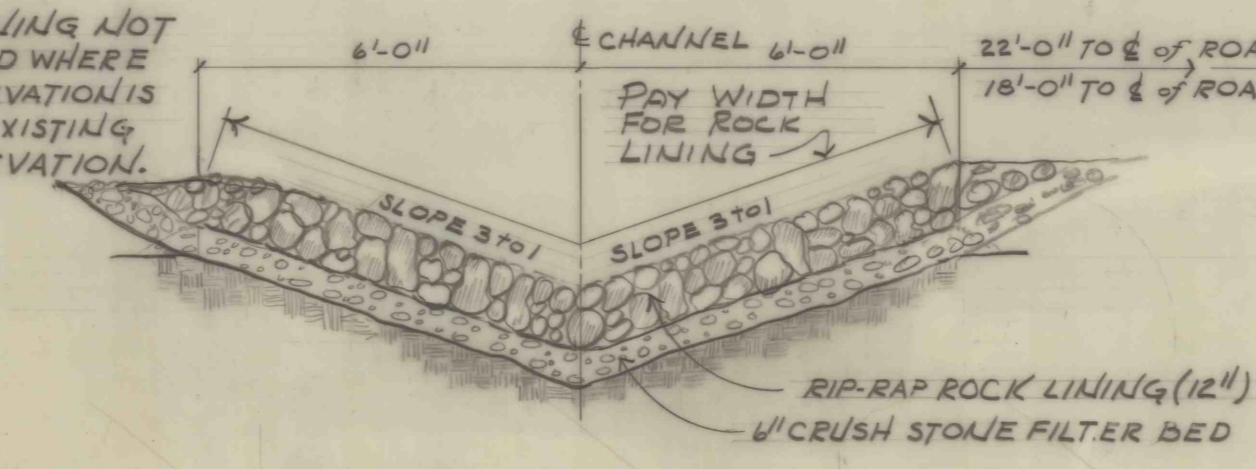


TYPICAL DITCH INTERSECTION DETAIL
N.T.S.



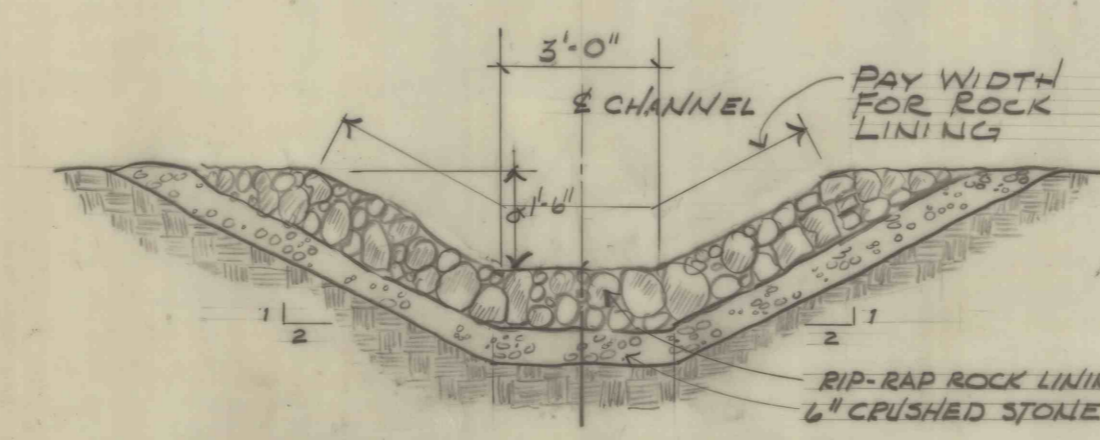
DITCH TYPE D-1
N.T.S.

NOTE:
ROCK LINING NOT REQUIRED WHERE DITCH ELEVATION IS BELOW EXISTING ROCK ELEVATION.



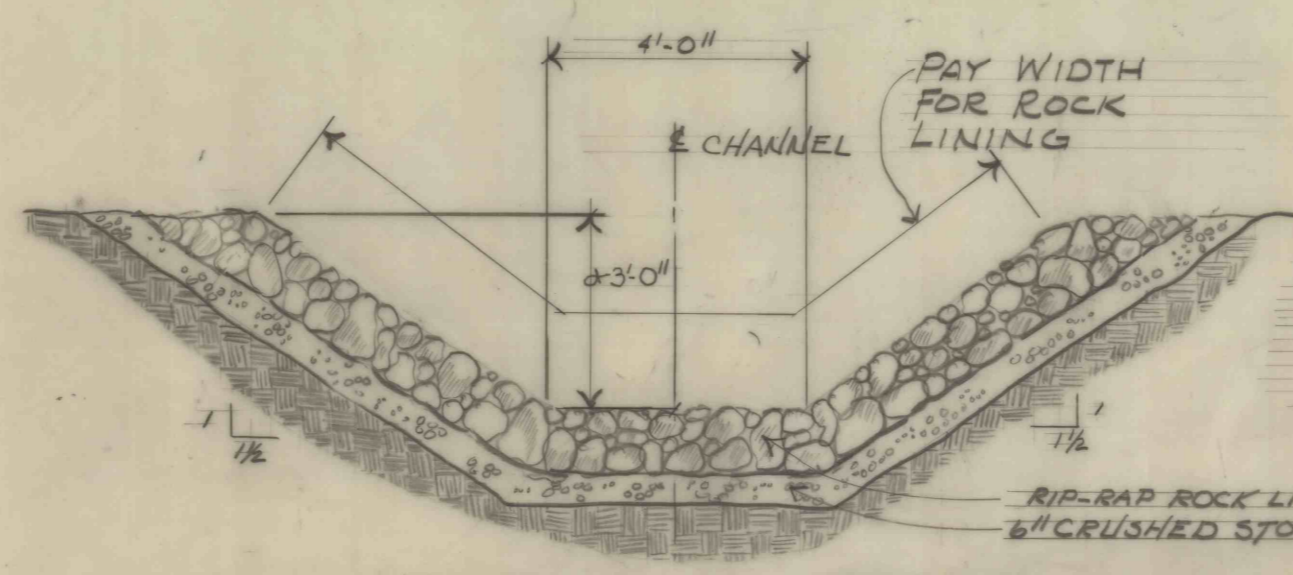
DITCH TYPE D-2
N.T.S.

NOTE:
PROVIDE 2'-0\"/>



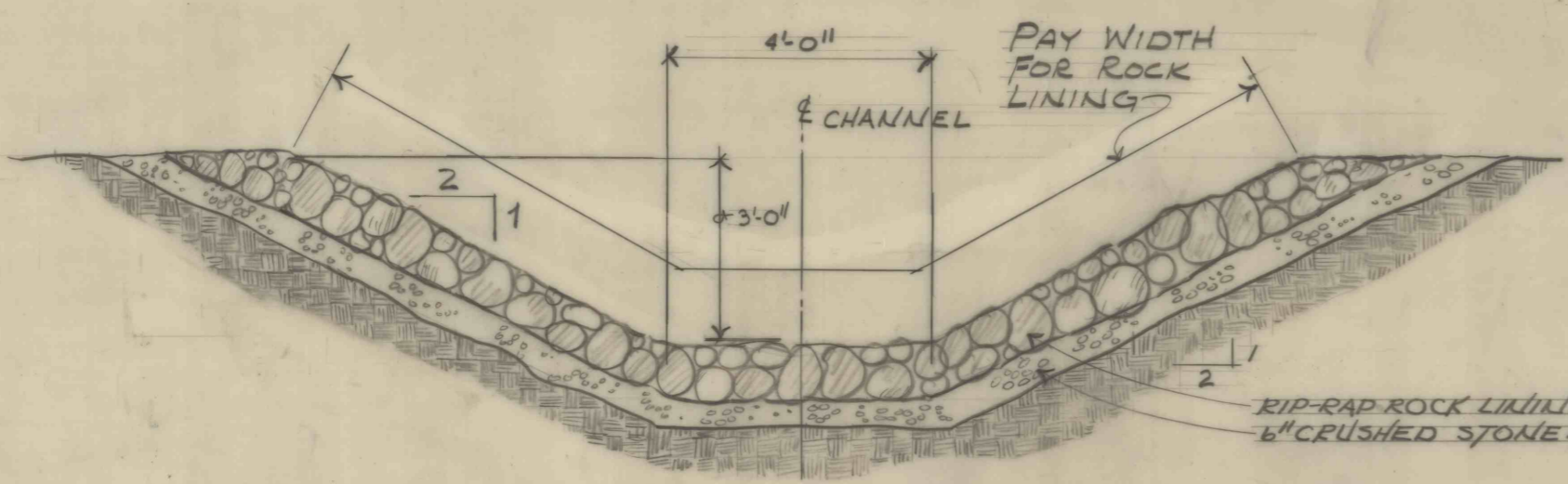
DITCH TYPE D-3
N.T.S.

NOTE:
PROVIDE DERRIK STONE LINING @ DITCHES BELOW RT. 51 LEADING TO EXISTING RETENTION BASIN SEE DWG. # 3

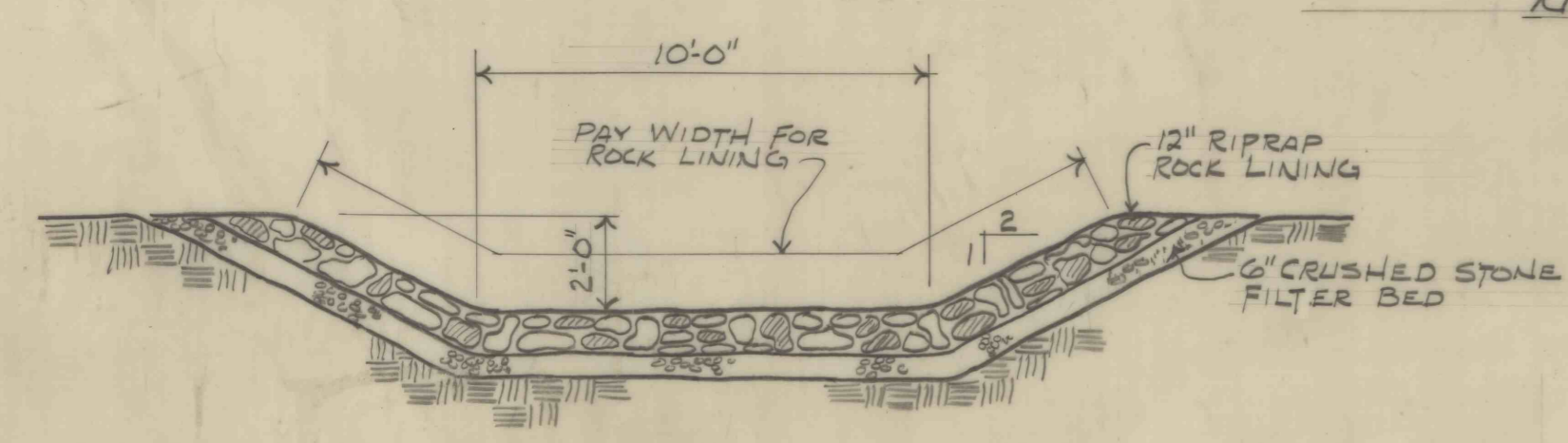


DITCH TYPE D-4
N.T.S.

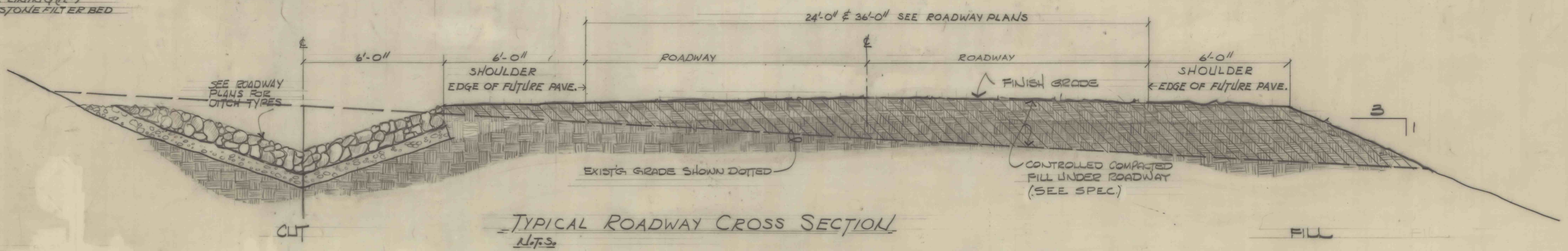
NOTE:
PROVIDE DERRIK STONE LINING @ DITCH BELOW RT. 51 LEADING TO EXISTING RETENTION BASIN SEE DWG. # 3



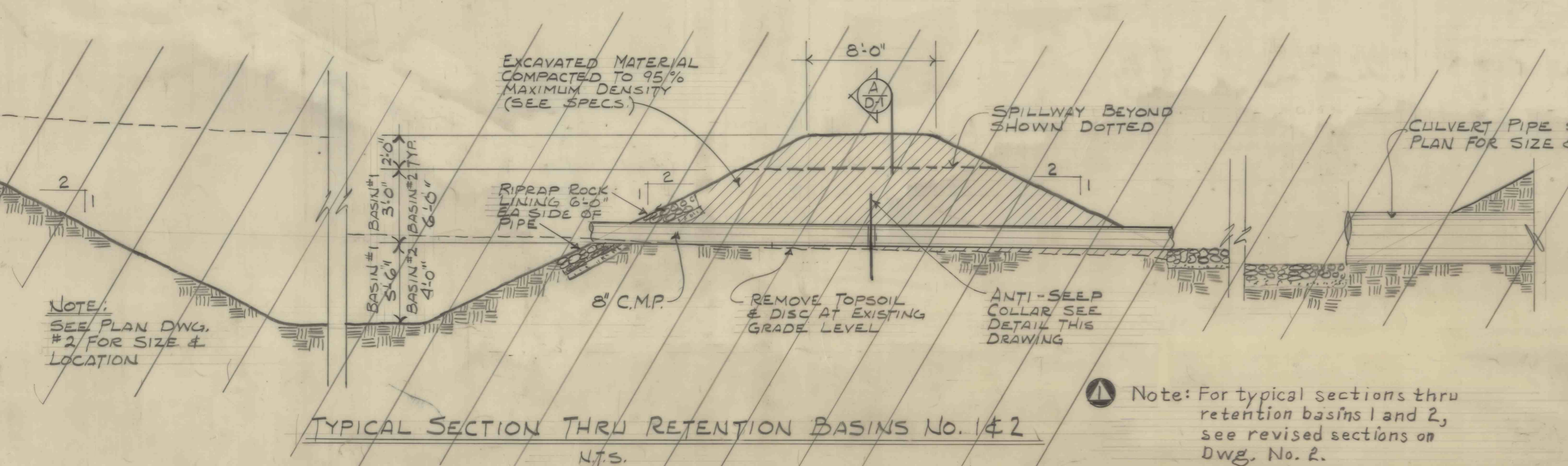
DITCH TYPE D-5
N.T.S.



SECTION (A-A) THRU EMERGENCY SPILLWAY
N.T.S.

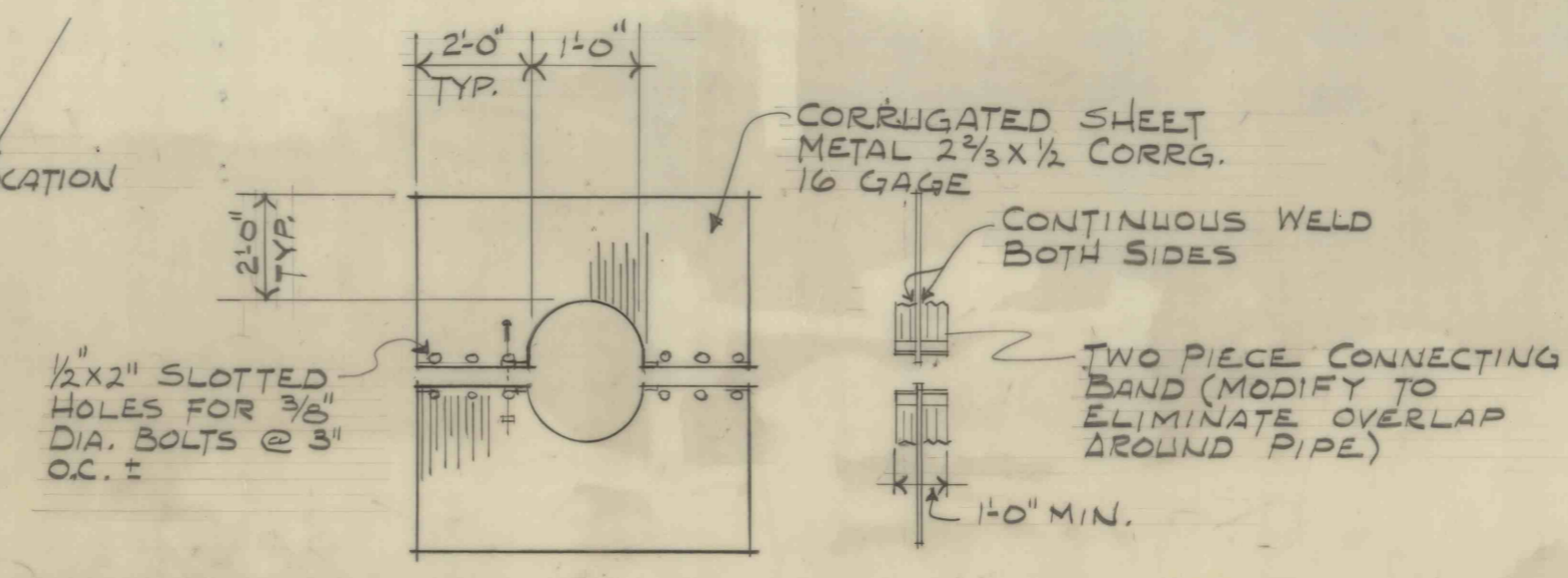


TYPICAL ROADWAY CROSS SECTION
N.T.S.



TYPICAL SECTION THRU RETENTION BASINS No. 1 & 2
N.T.S.

Note: For typical sections thru retention basins 1 and 2, see revised sections on DWG. No. 2.



ANTI-SEEP COLLAR DETAIL
N.T.S.

NO. DATE	As built	REVISION	8/83	CONTRACT NO. ASMR-18
SUBMITTED		APPR		STRIP MINE RESTORATION
PROFESSIONAL				SOLOMON CREEK WATERSHED
APPROVED				WILKES-BARRE TWP. LUZERNE CO., PA.
APPROVED				LACY, ATHERTON & DAVIS
				ARCHITECTS & ENGINEERS
				WILKES-BARRE HARRISBURG WILLIAMSPORT
				SECTIONS & DETAILS
				COMMONWEALTH OF PENNSYLVANIA
				DEPARTMENT OF ENVIRONMENTAL RESOURCES
				OFFICE OF RESOURCES MANAGEMENT
DRAWN BY	DATE	SCALE	DRAWING NO.	
	4-28-80		D-1	