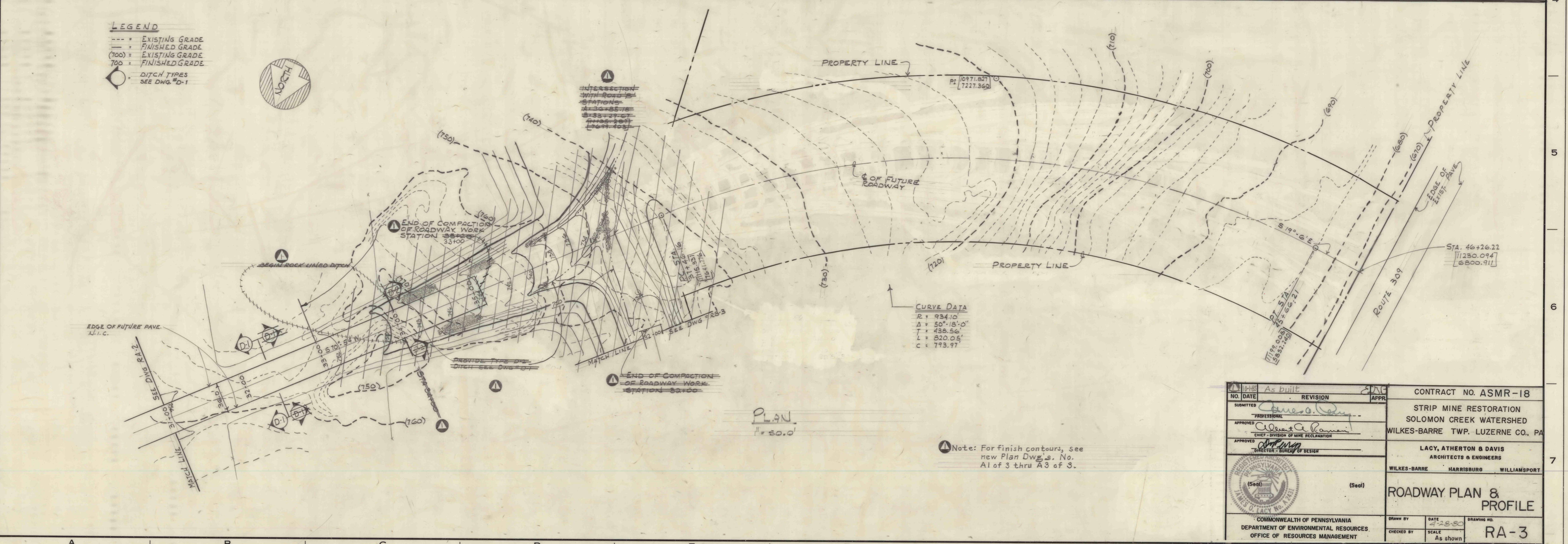
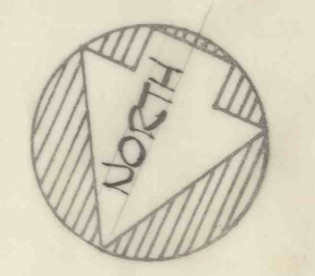


STATION	31+00	32+00	32+50	33+00	33+50	34+00	34+50	35+00	35+50	36+00	37+00	38+00	39+00	40+00	41+00
FINISHED GRADE	751.99	752.68	752.76	752.33	751.31	747.87	745.36	742.31	738.14	731.06	726.42	715.76	705.10		

ROADWAY A CENTER LINE PROFILE  
 SCALE HORIZONTAL 1"=50.0' VERTICAL 1"=10.0'

- LEGEND**
- EXISTING GRADE
  - FINISHED GRADE
  - (100) EXISTING GRADE
  - 700 FINISHED GRADE
  - DITCH TYPES SEE DWG. #D-1



As built		CONTRACT NO. ASMR-18	
NO. DATE	REVISION	STRIP MINE RESTORATION	
SUBMITTED		SOLOMON CREEK WATERSHED	
APPROVED		WILKES-BARRE TWP. LUZERNE CO., PA	
APPROVED		LACY, ATHERTON & DAVIS	
APPROVED		ARCHITECTS & ENGINEERS	
APPROVED		WILKES-BARRE HARRISBURG WILLIAMSPORT	
APPROVED		ROADWAY PLAN & PROFILE	
APPROVED		RA-3	
COMMONWEALTH OF PENNSYLVANIA		DRAWN BY DATE 12-6-60 DRAWING NO.	
DEPARTMENT OF ENVIRONMENTAL RESOURCES		CHECKED BY SCALE As shown	
OFFICE OF RESOURCES MANAGEMENT			