

GEORGE PECK

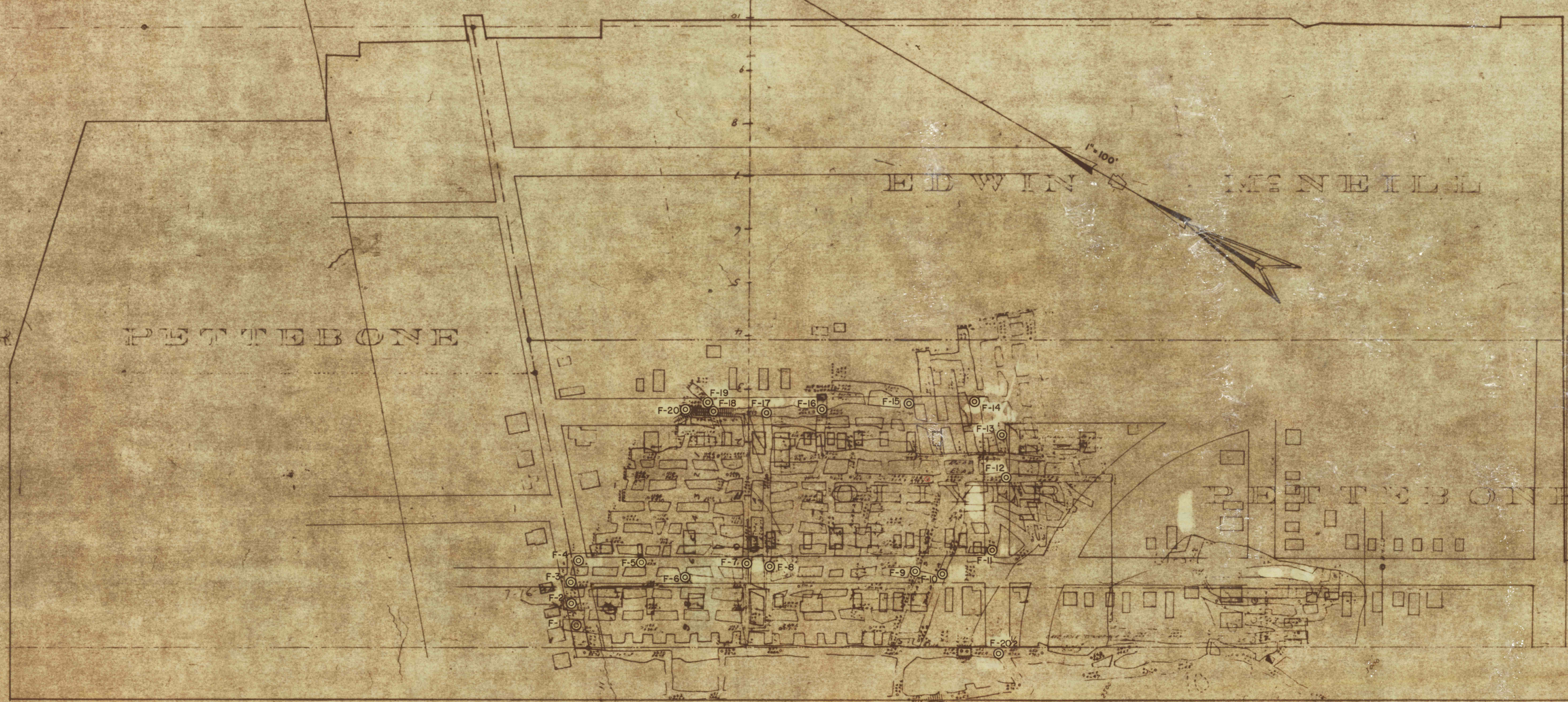
EDWIN McNEILL

EBENEZER

PETERBONE

PETERBONE

BLACK DIAMOND COLLIERY



LEGEND

© F-No. Holes pertain to four foot vein.

COMMONWEALTH OF PENNSYLVANIA  
 DEPARTMENT OF ENVIRONMENTAL RESOURCES  
 OFFICE OF RESOURCES MANAGEMENT

**DRILLING & CASING EXPLORATORY  
 BOREHOLES**

**ABANDONED HARRY E. COLL'Y  
 FOUR FOOT VEIN**

BORO. OF SWAYZERSVILLE, LUZERNE COUNTY  
 WITHIN THE AREAS OF DIAMOND, PENNSYLVANIA  
 ST. CLUM, CHURCH, OLIVER, STREETS.

DESIGNED: \_\_\_\_\_ DATE: \_\_\_\_\_  
 DRAWN: \_\_\_\_\_ SUBM. *W. J. [Signature]* DISTRICT ENGINEER: \_\_\_\_\_  
 RECOM. *S. H. [Signature]* DIRECTOR: \_\_\_\_\_  
 GROUP LEADER: \_\_\_\_\_ APPR. *F. A. [Signature]* DEPUTY SECRETARY: \_\_\_\_\_

DWG. NO. FE40-7-1

150-10