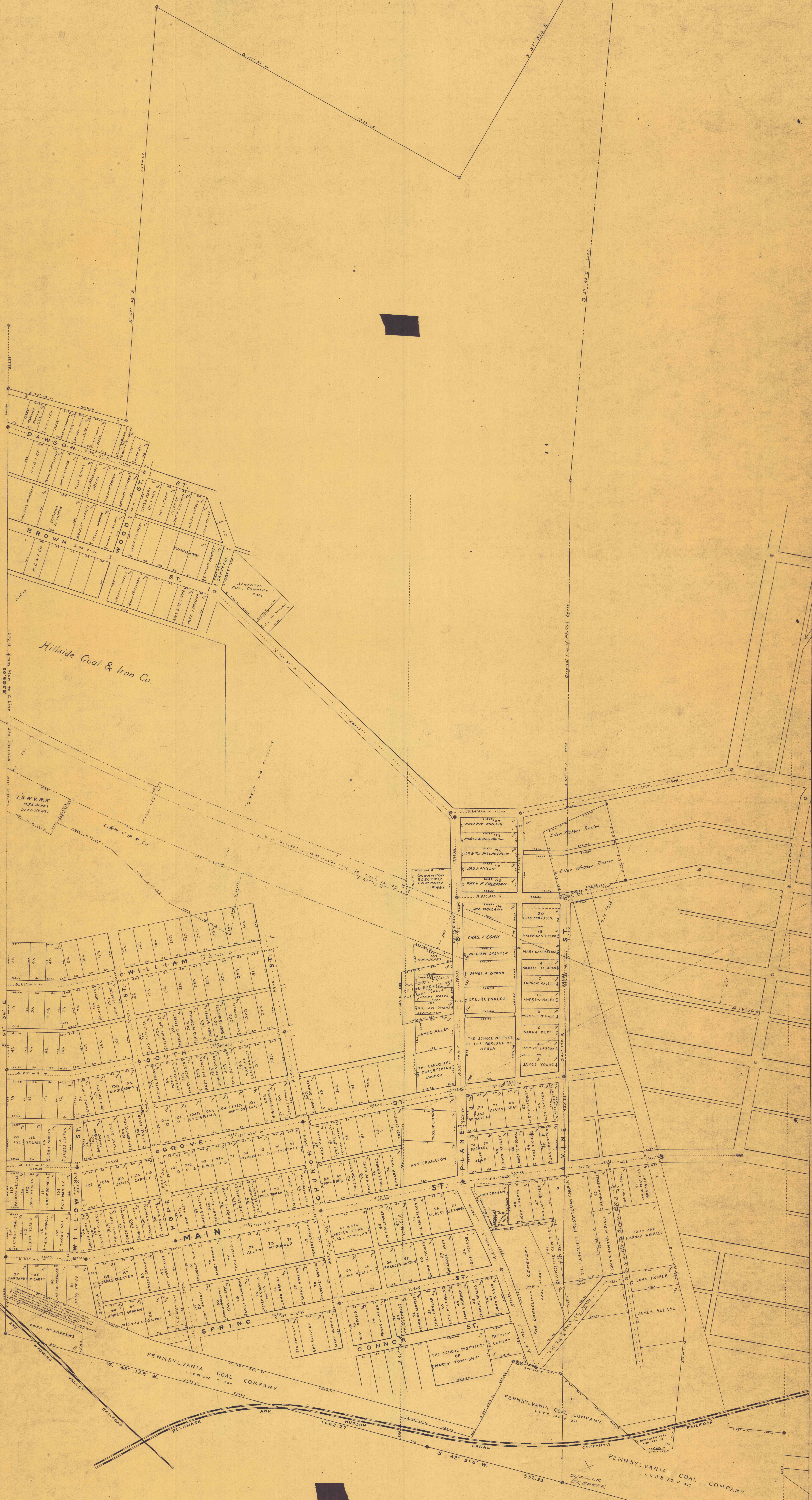


Pittston Twp.

STARK & J. D. S. T. A. R. K. & J. D. S. T. A. R. K.



LANDS
 OF THE
NEW YORK & PITTSBURGH COAL CO.
 AT AVOCA, PA.
 RESURVEYED AND EXTENDED BY JOHN W. BERRY
 IN 1892 AND 1893.

Scale 100 feet to an inch.

Two small concentric circles indicate a stone monument.
 All distances on this map have an allowance of six hundredths of a foot on every hundred feet as measured by the Chestermann steel tape, a g where a distance is given on the map as 100 ft, it will measure 100 ⁶⁰/₁₀₀ ft. by the Chestermann steel tape.
 The numbers written in blue are references to the Company's Deed Books, except where the abbreviation "L.C.D.B." for Luzerne County Deed Book precedes the number.
 The needle course of the Stark Boundary line S 61° 36' E, was taken by the Penn. Coal Co's Engineers in 1870 and has been adopted as a base.
 All other courses were determined by the angles taken from that line.
 Where the letter 'C' is written on a lot it indicates that it is under contract.