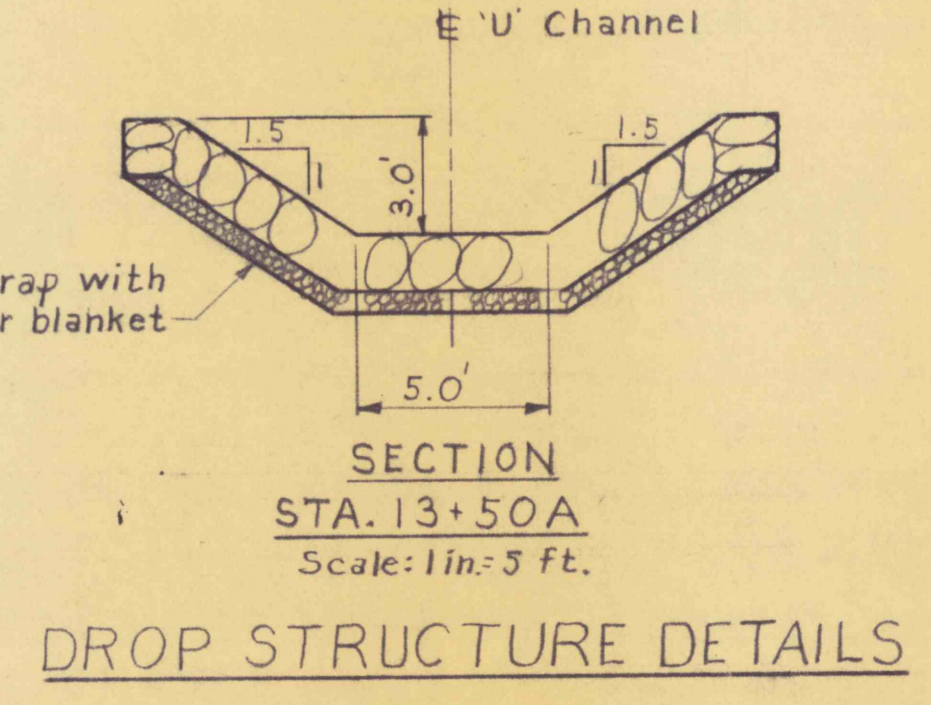
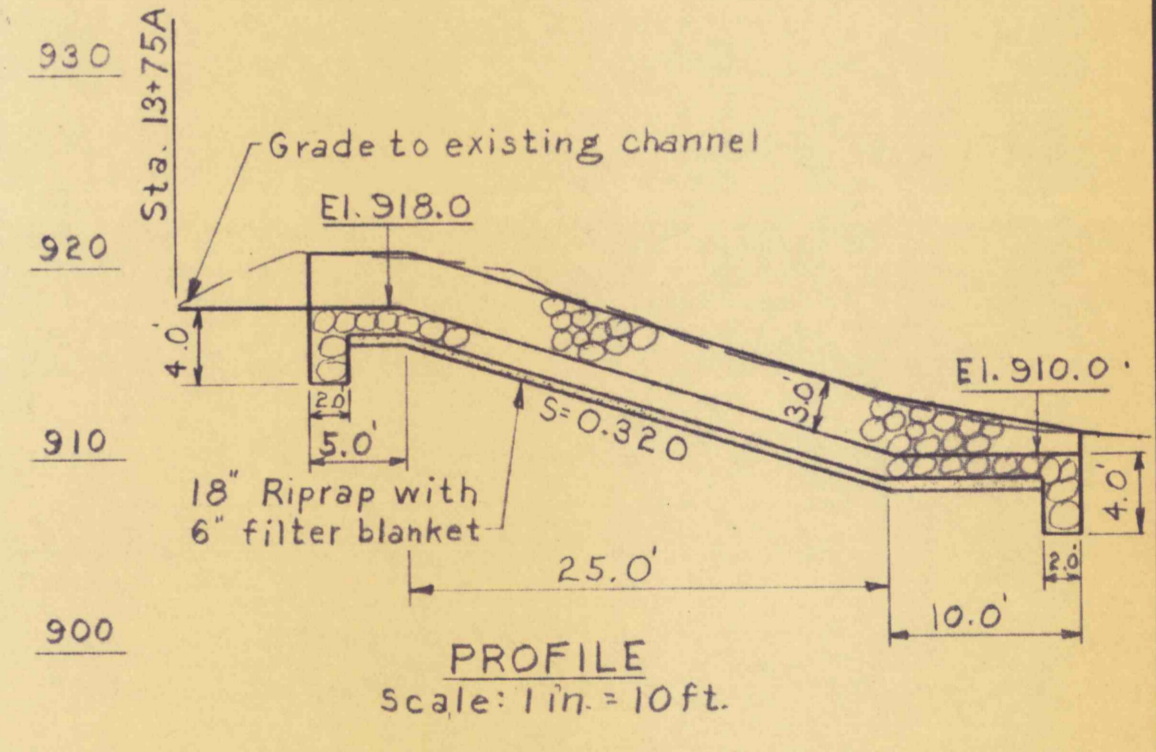
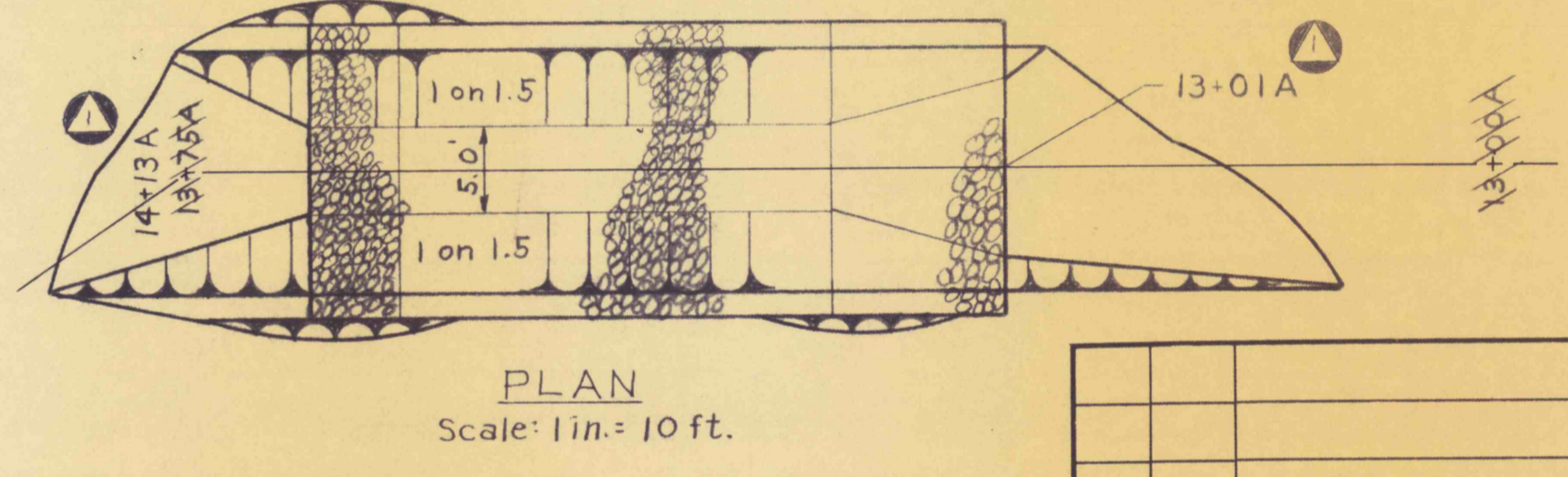
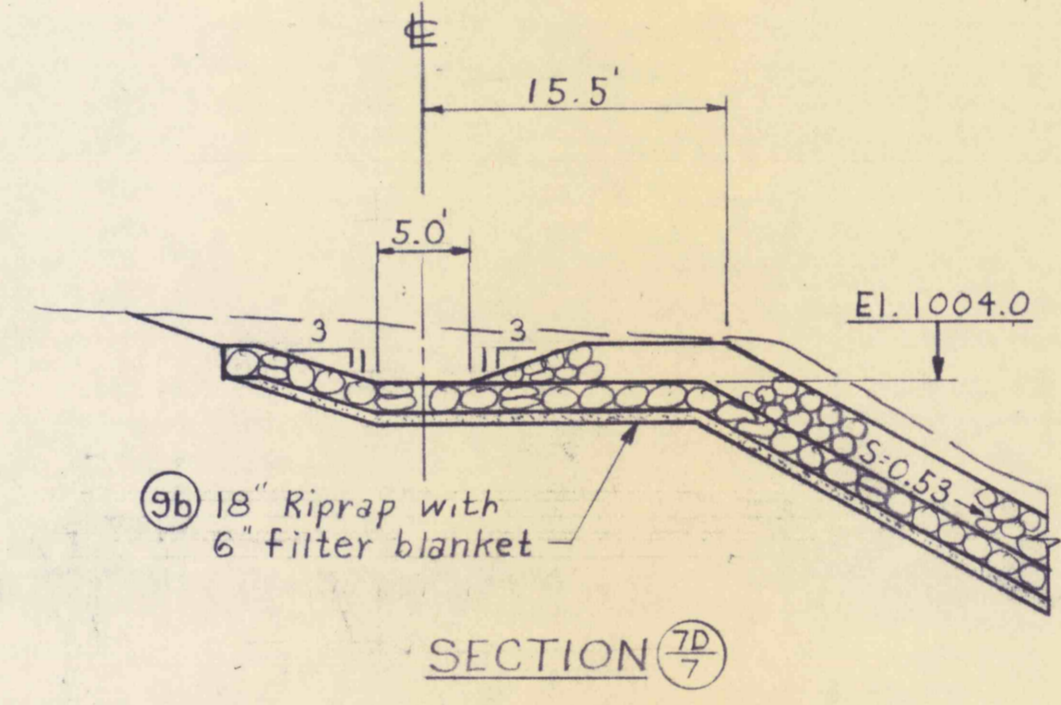
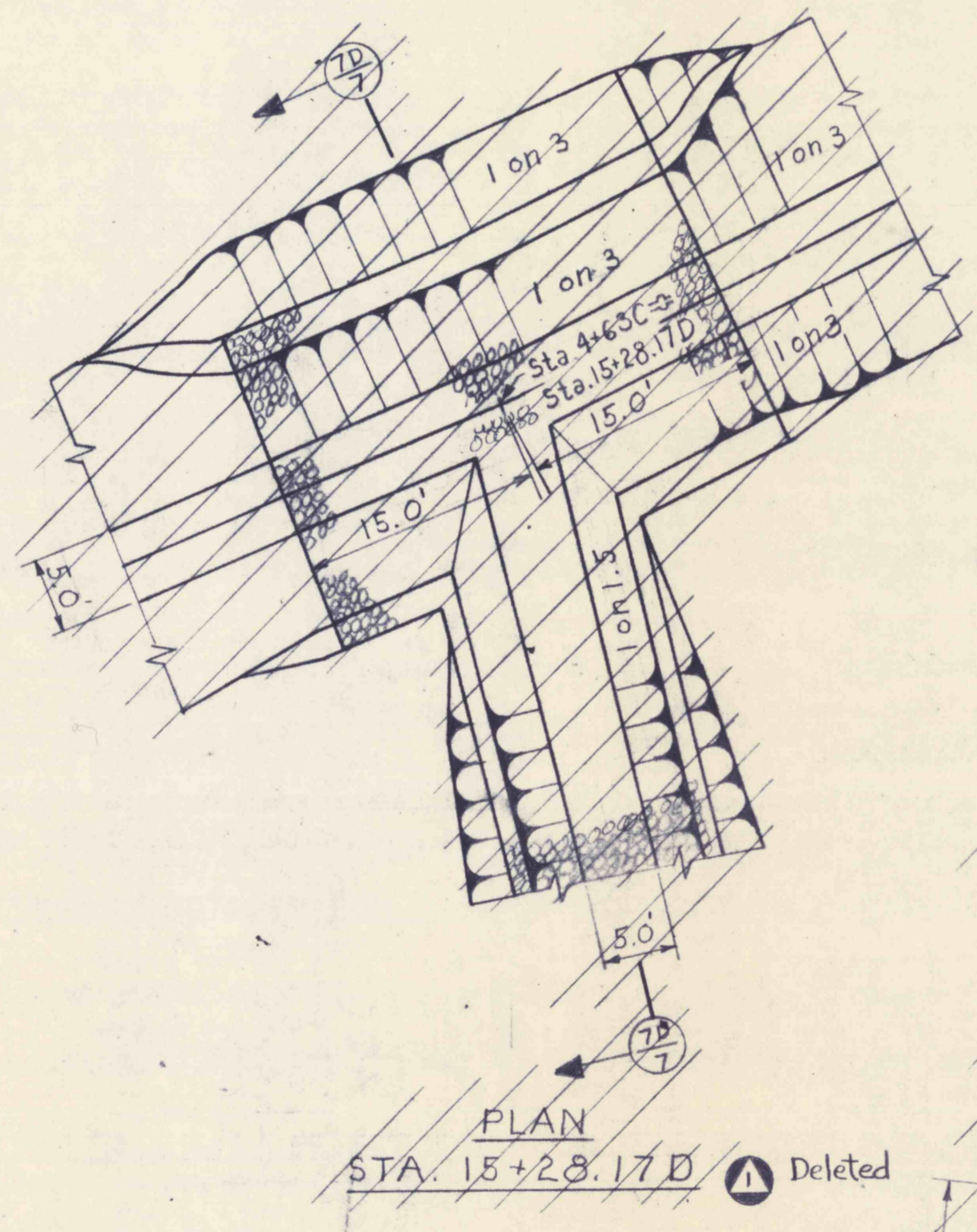
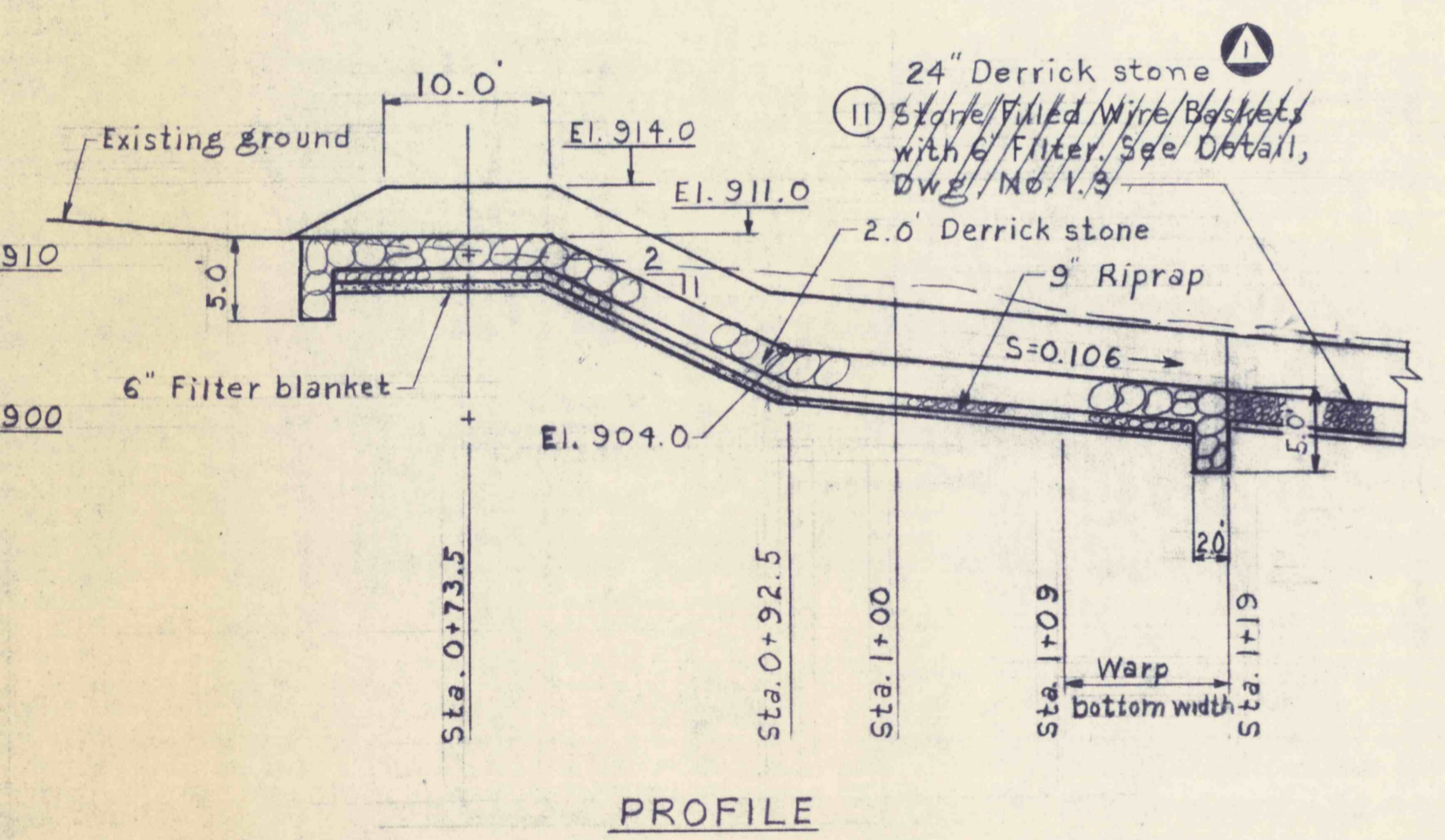
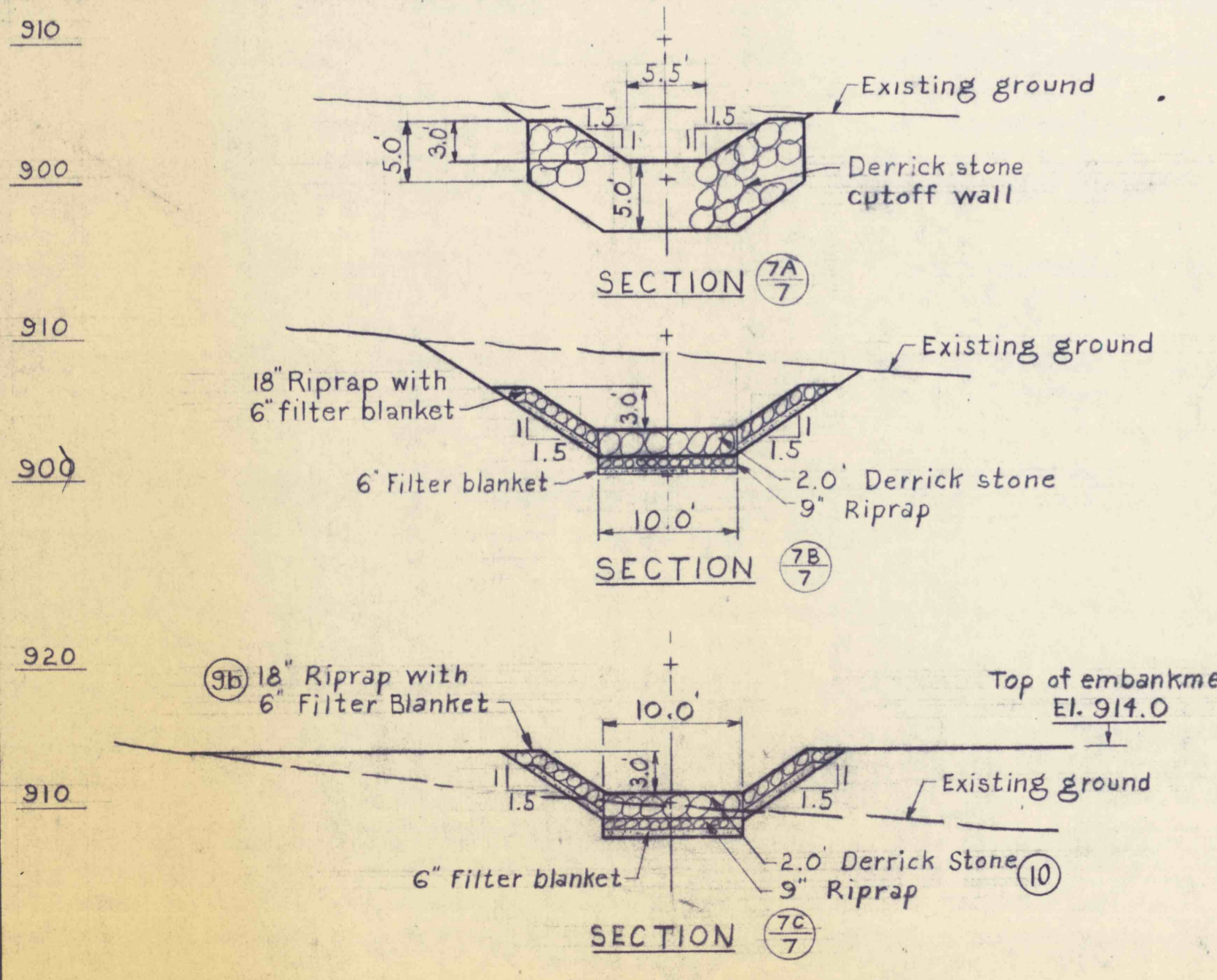


⑬ ROCK BARRIER DETAILS
Scale: 1 in. = 5 ft.

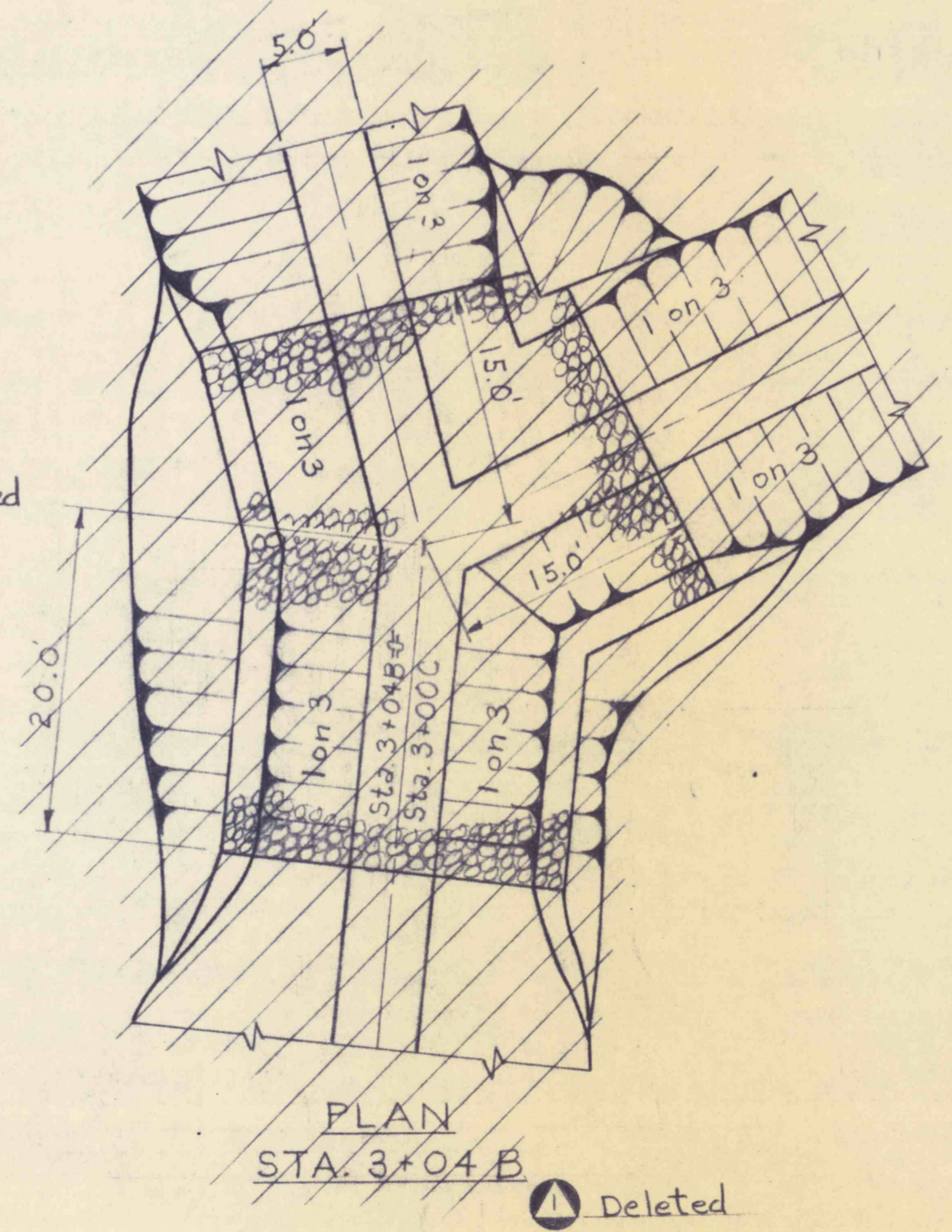
NOTES:
1. The Engineer will determine, the exact layout, depth of stripping, clearing, and grubbing at site.
2. (No) Indicates payment item.



DROP STRUCTURE DETAILS

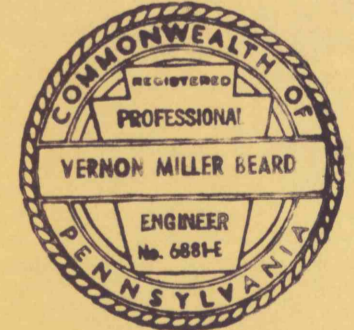


OVERFLOW DETAILS
Scale: 1 in. = 10 ft.



CHANNEL INTERSECTIONS
Scale: 1 in. = 10 ft.

NO.	DATE	REVISION	APPR.
102778		As built	
SUBMITTED		P. Gupta	
PROJECT CO-ORDINATOR			
APPROVED		[Signature]	
CHIEF - DIVISION OF WATER RESOURCES PROJECTS			
APPROVED		[Signature]	
DIRECTOR - BUREAU OF RESOURCES PROGRAMMING			



COMMONWEALTH OF PENNSYLVANIA
DEPARTMENT OF ENVIRONMENTAL RESOURCES
OFFICE OF RESOURCES MANAGEMENT

PROJECT NO. G40:5-101.1
DRAINAGE IMPROVEMENTS
TO
LARKSVILLE FLUME

LUZERNE CO. PENNSYLVANIA
DETAILS OF OVERFLOW, DROP
STRUCTURE, AND ROCK BARRIERS

DRAWN BY M.M.C.	DATE	DRAWING NO. 1.7
CHECKED BY	SCALE As shown	