

TRAVERSE DATA

Traverse Station	Coordinates	
	North	East
26+50.11A	9,876.183	8,905.960
27+33.62A	9,845.684	8,982.889
29+35.53A	9,926.016	9,168.121
0+00 B	9,942.090	8,707.200
45+41.58B	10,143.532	8,811.302

- NOTES:
- Reference Dwg. No. 17 for Details of Overflow Section
 - The Engineer will determine the exact layout, depth of stripping, clearing and grubbing at site.
 - ⊙ Indicates payment item.
 - The depth of excavation may be modified by the Engineer depending upon the actual site conditions.

P.I NO. 10
Sta. 3+94.38
N 10,153.00
E 8,533.50

P.I NO. 9
Sta. 2+94.92
N 10,170
E 8,631.5
Δ = 25° 56' 31.7" Lt

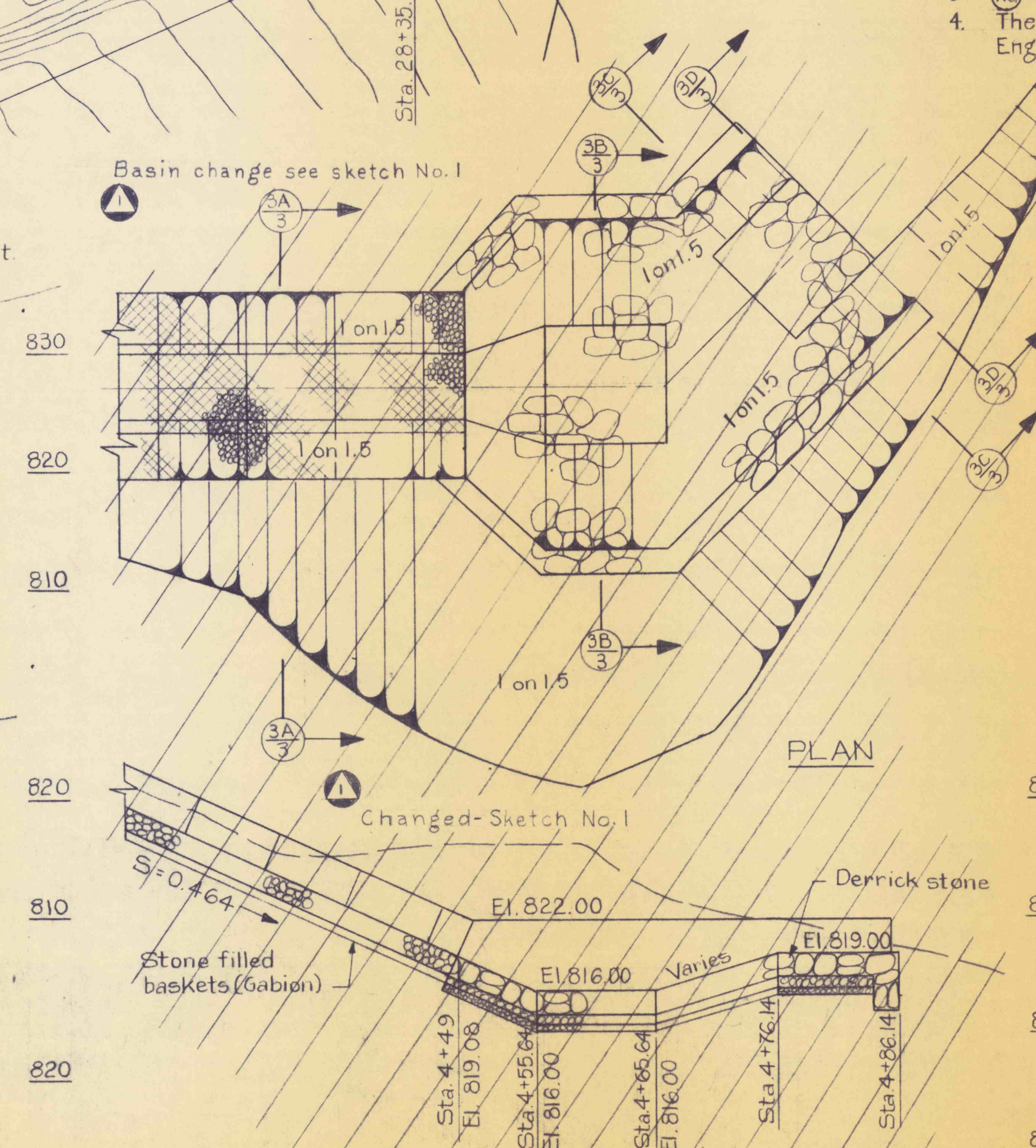
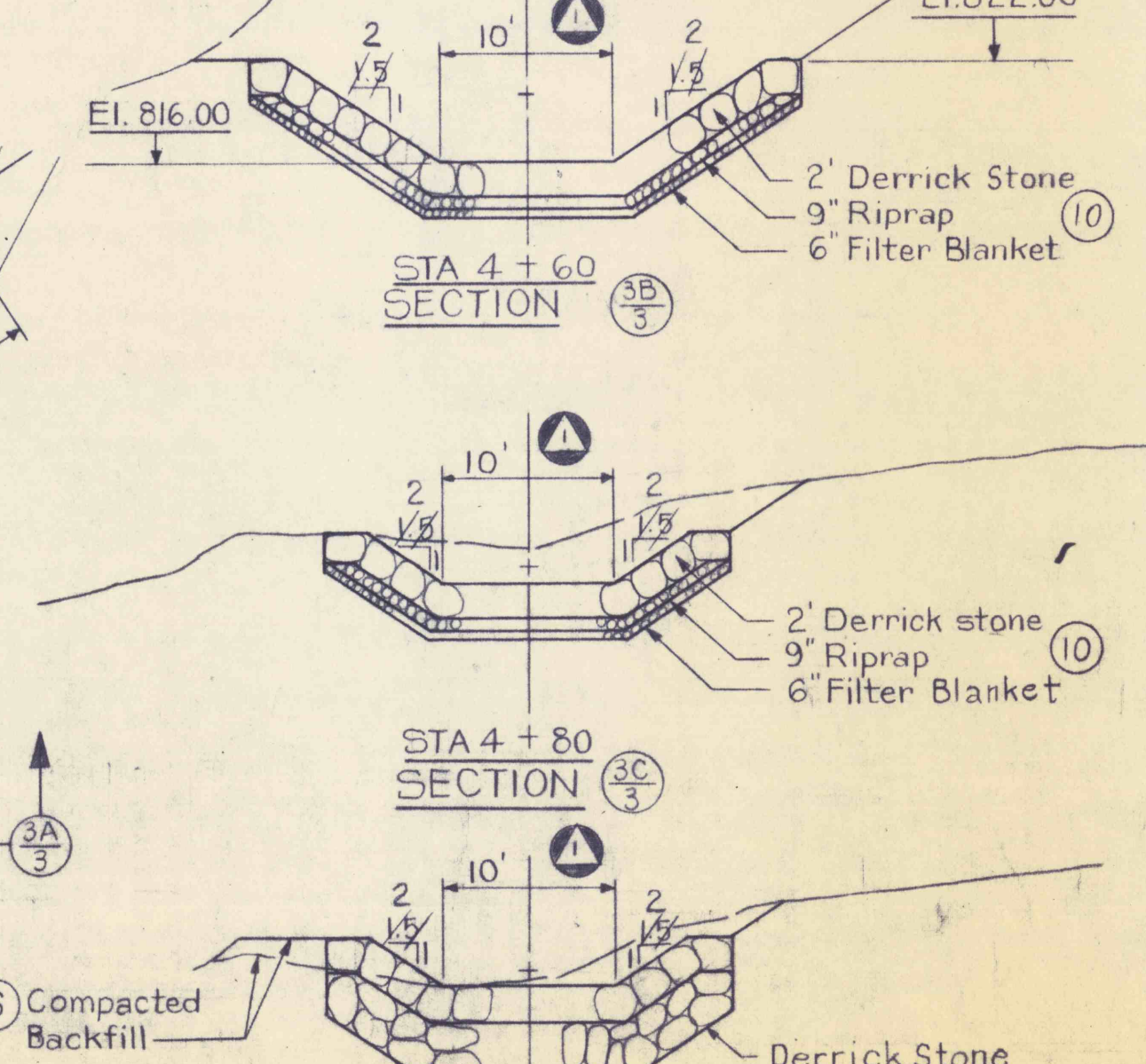
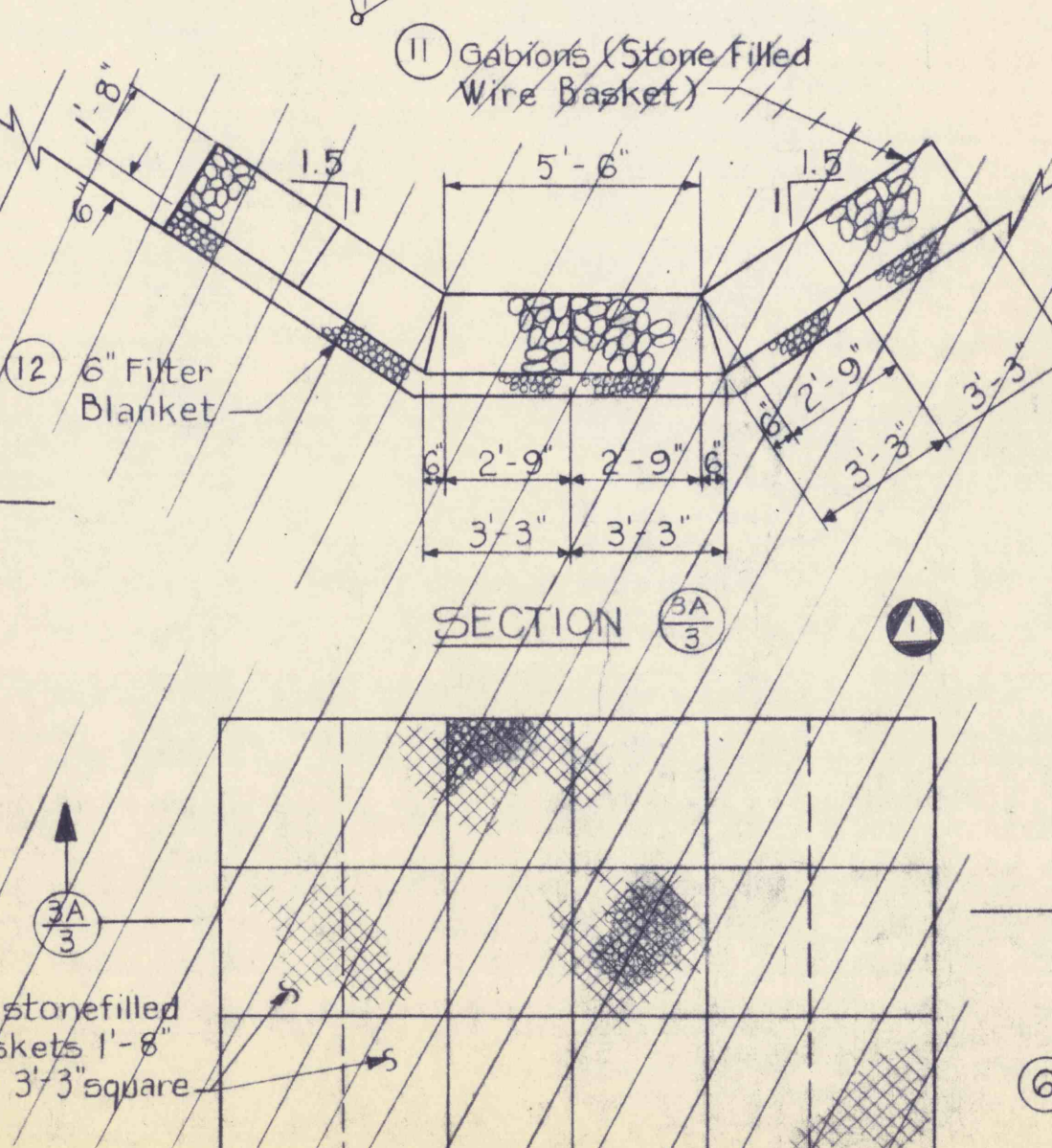
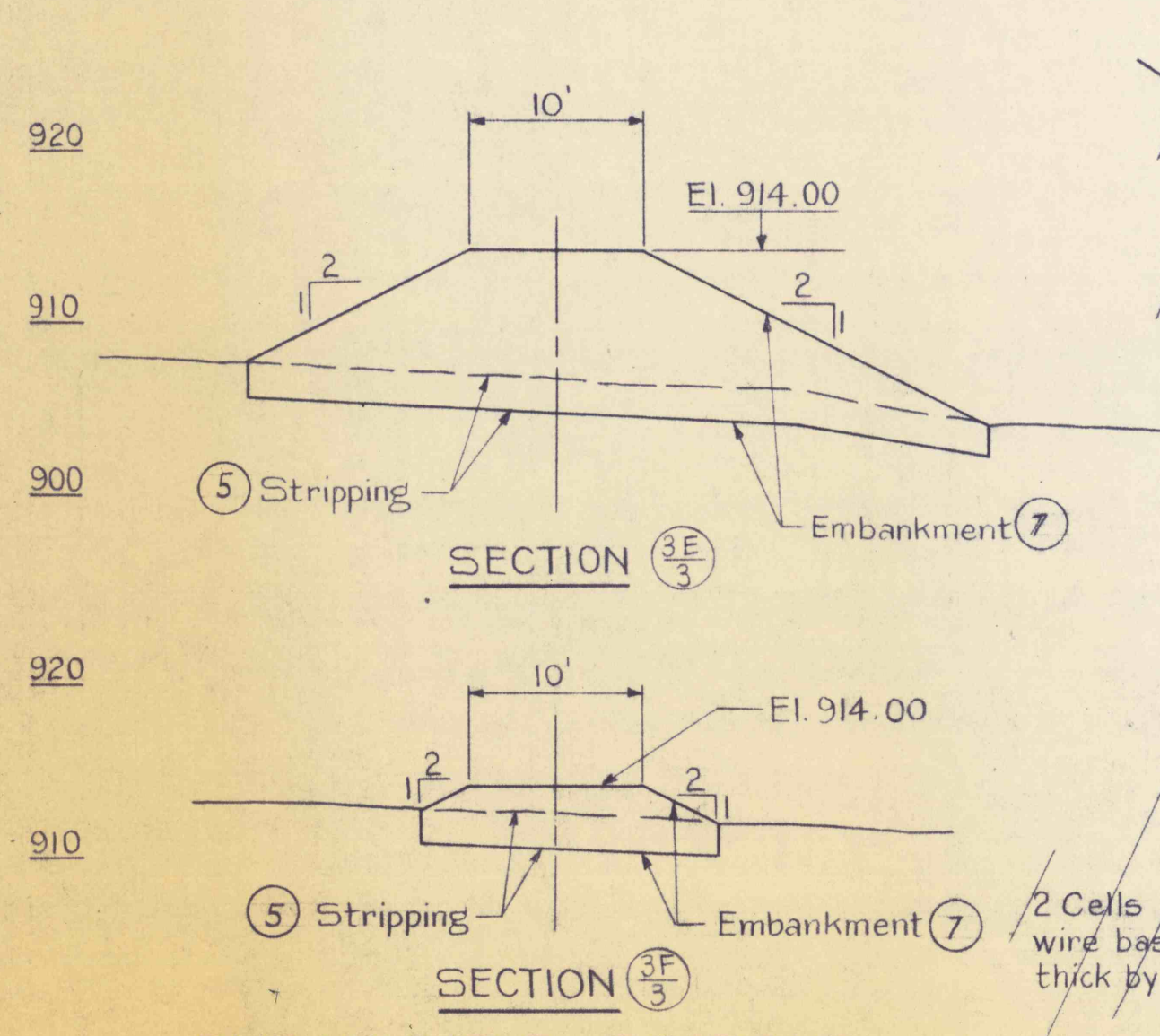
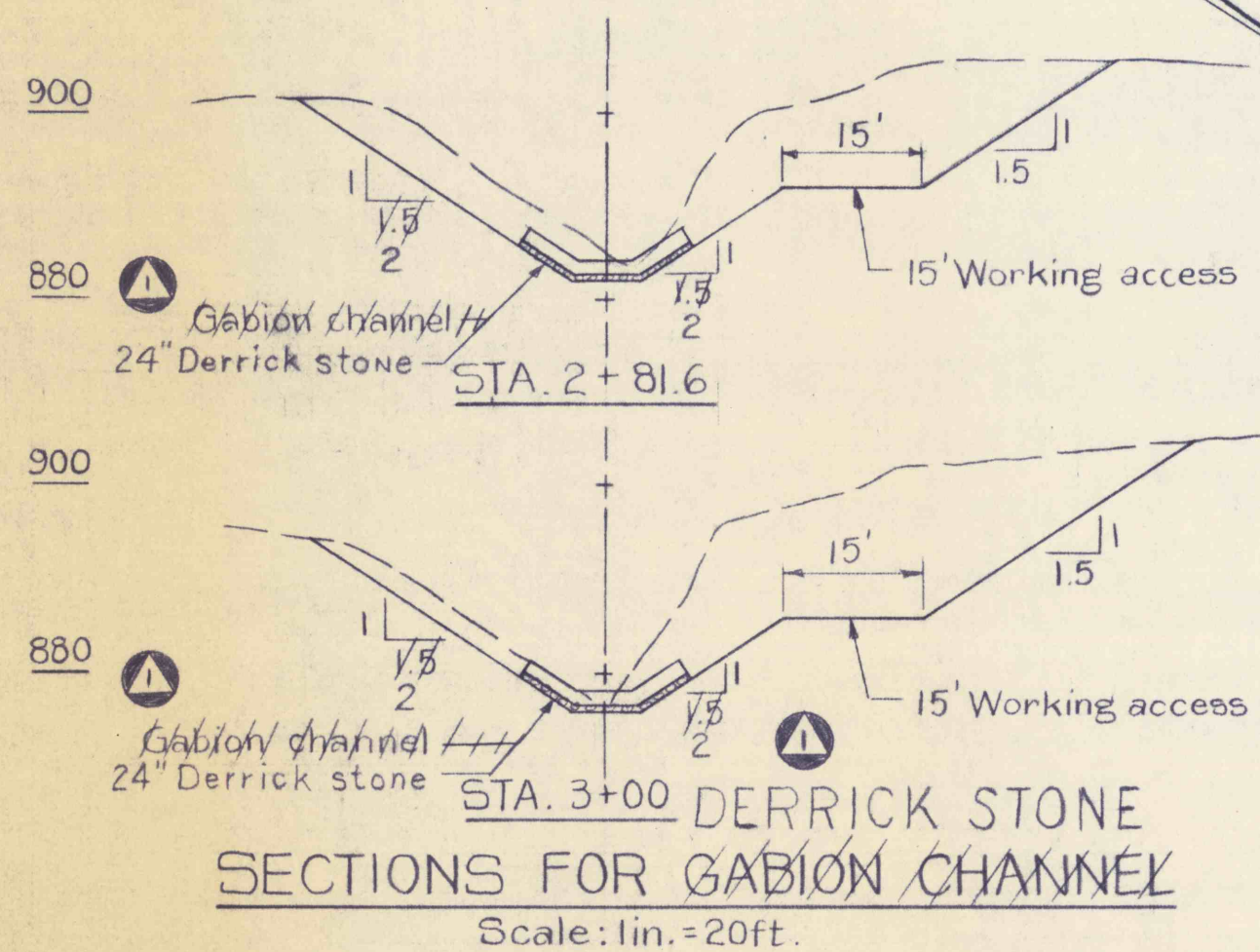
P.I NO. 1
Sta. 0+73.50 → 2+00 emb.
N 10,225.50
E 8,708.50
Δ = 83° 42' 14.4" Rt

P.I NO. 2
Sta. 2+81.66
N 10,071.00
E 8,848.00
Δ = 13° 55' 9.8" Rt

P.I NO. 3
Sta. 3+78.07
N 9,986.00
E 8,893.5
Δ = 17° 17' - 56.6" Lt

P.I NO. 5
Sta. 7+25.64
N 10,000.00
E 9,150.00
Δ = 36° 6' - 56.3" Lt

P.I NO. 4
Sta. 4+65.64
N 9,900.00
E 8,910.00
Δ = 101° 45' - 32.5" Rt



NO.	DATE	REVISION	APPR.
10-2778		As-built	

COMMONWEALTH OF PENNSYLVANIA
DEPARTMENT OF ENVIRONMENTAL RESOURCES
OFFICE OF RESOURCES MANAGEMENT

PROJECT NO. G40:5-101.1
DRAINAGE IMPROVEMENTS
TO
LARKSVILLE FLUME

LUZERNE CO. PENNSYLVANIA
DETAILS OF GABION CHANNEL
AND DAM EMBANKMENT

DRAWN BY: Mandy
CHECKED BY: [Signature]
DATE: [Blank]
SCALE: As shown

