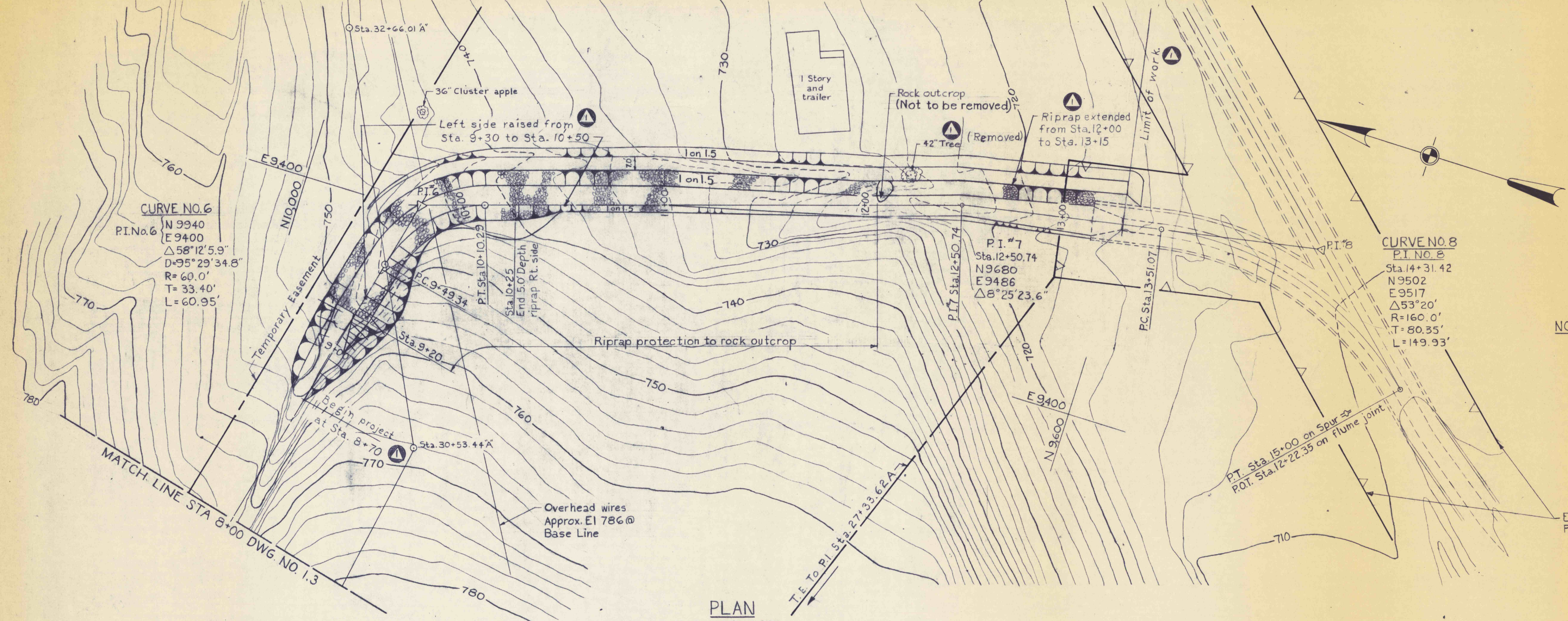


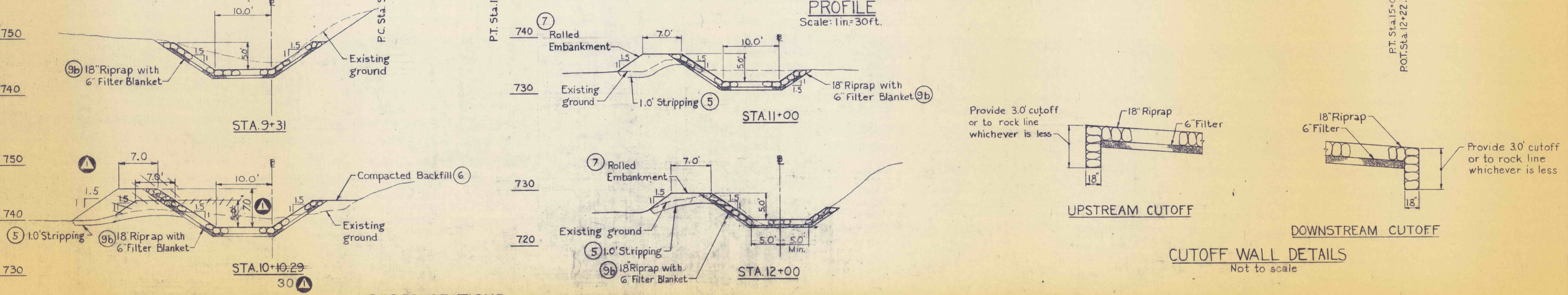
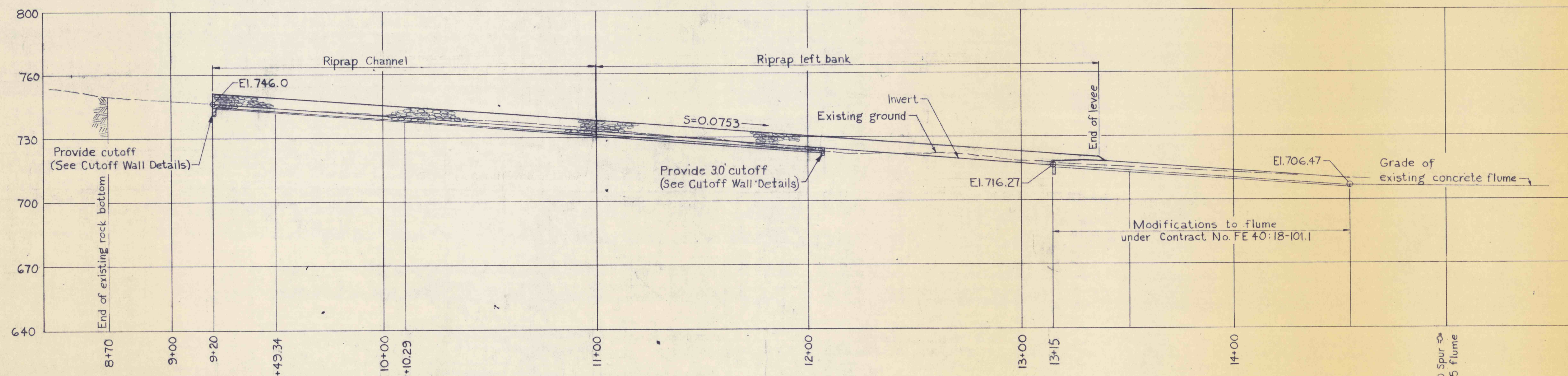
TRAVERSE DATA

Traverse Station	Coordinates	
	North	East
29+35.53A	9926.016	9168.122
30+53.44A	9904.575	9284.065
32+66.01A	9998.721	9474.639



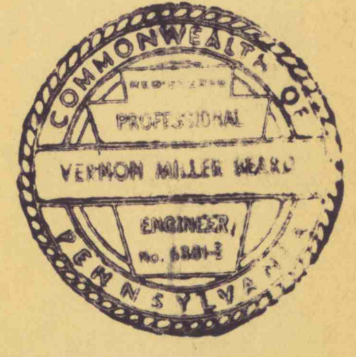
- NOTES:
- The Engineer will determine the exact layout, depth of stripping, clearing, and grubbing at the site.
 - (No) Indicates payment item.
 - The channel shall be excavated to the given lines and grades or to rock line, whichever is less.
 - Overhead wires owned by U.G.I. Corp. 890-3 Luzerne Electric Division, 247 Wyoming Ave., Kingston, Pa. 18704.

Existing Right of Way for Project No. FE 40-18-101.1



NO.	DATE	REVISION	APPR.
10-27-76		As built	

SUBMITTED: P. Gupta
 APPROVED: P. Adams, Chief, Division of Water Resources Projects
 APPROVED: V. W. Brand, Director - Bureau of Resources Programming



COMMONWEALTH OF PENNSYLVANIA
 DEPARTMENT OF ENVIRONMENTAL RESOURCES
 OFFICE OF RESOURCES MANAGEMENT

PROJECT NO. G40:5-101.1

DRAINAGE IMPROVEMENTS TO LARKSVILLE FLUME

LUZERNE CO. PENNSYLVANIA
 DETAILS OF RIPRAP CHANNEL AND LEVEE EMBANKMENT