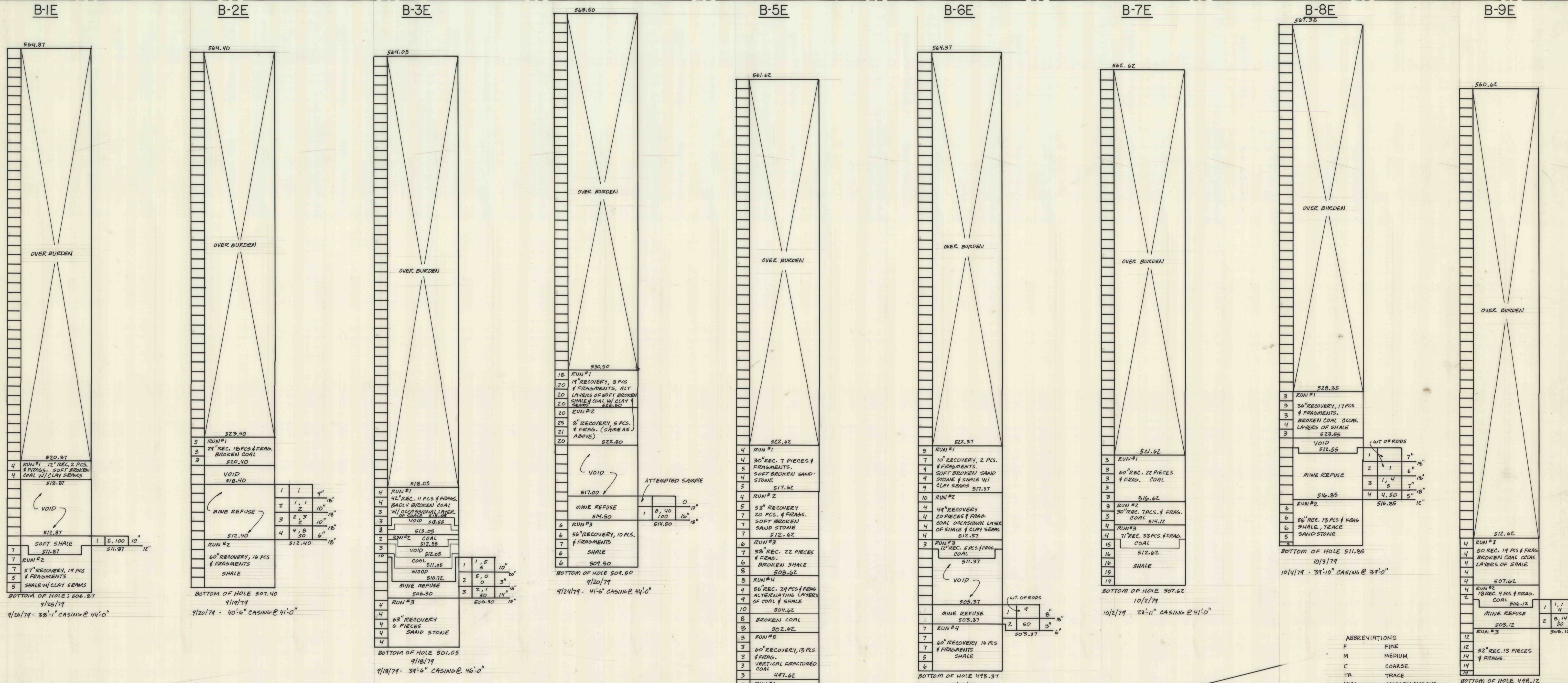


DATUM 570.00

DATUM ELEV. 570.00



BOTTOM OF HOLE: 506.87
9/25/79
9/26/79 - 38'-1" CASING @ 44'-0"

BOTTOM OF HOLE 507.40
9/19/79
9/20/79 - 40'-6" CASING @ 41'-0"

BOTTOM OF HOLE 501.05
9/18/79
9/18/79 - 34'-6" CASING @ 46'-0"

BOTTOM OF HOLE 504.50
9/20/79
9/24/79 - 41'-6" CASING @ 44'-0"

BOTTOM OF HOLE 488.62
9/27/79
10/1/79 - 34'-1" CASING @ 39'-0"

BOTTOM OF HOLE 498.37
9/26/79
9/27/79 - 34'-2" CASING @ 42'-0"

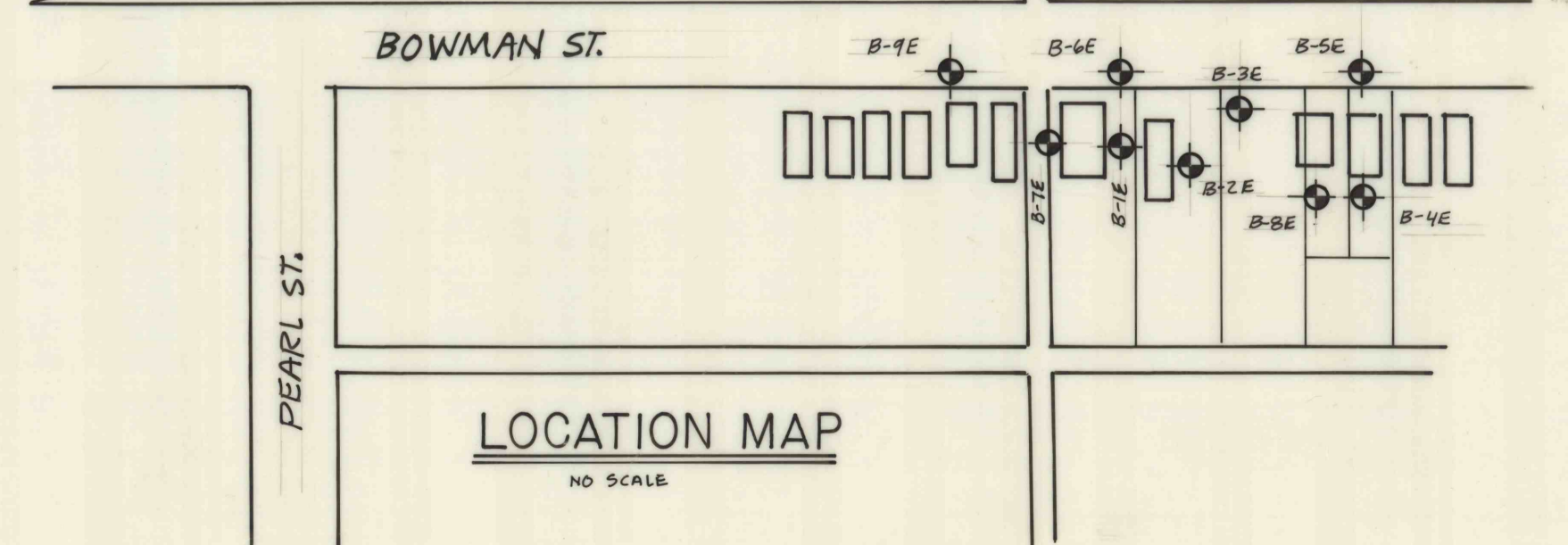
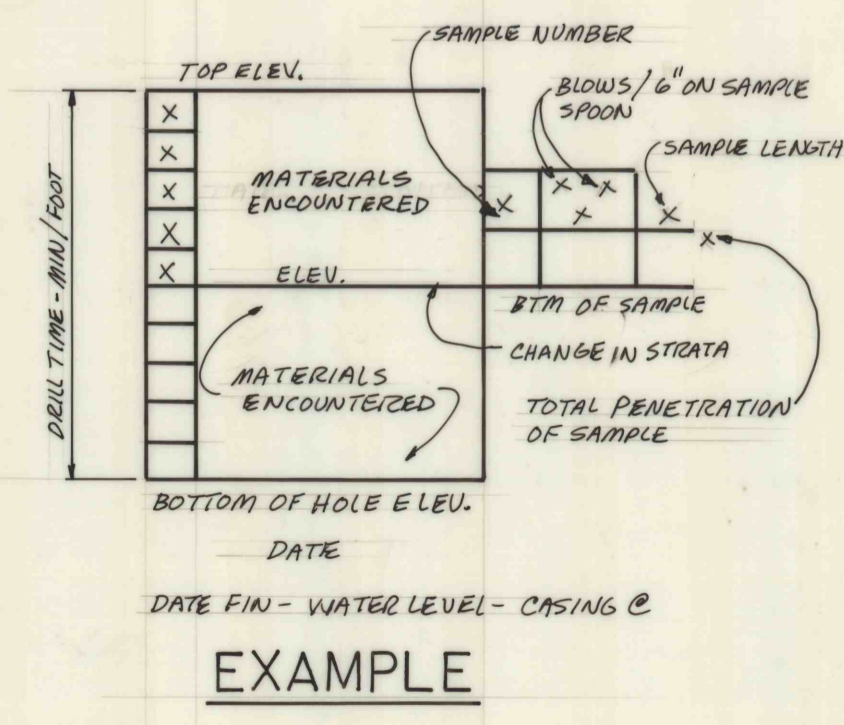
BOTTOM OF HOLE 507.62
10/2/79
10/2/79 - 23'-11" CASING @ 41'-0"

BOTTOM OF HOLE 511.85
10/3/79
10/4/79 - 39'-10" CASING @ 39'-0"

BOTTOM OF HOLE 498.12
10/5/79
10/8/79 - 32'-10" CASING @ 48'-0"

ABBREVIATIONS
F FINE
M MEDIUM
C COARSE
TR TRACE
MISC. MISCELLANEOUS

* NOTES: 1. 140LB HAMMER WITH 30" DROP USED TO DRIVE 1 3/8" SPOON.
2. DRILLER: F. HAWKINS, T. BECKWITH
3. VISUAL CLASSIFICATION DONE BY DRILLER IN FIELD.



TEST BORINGS AT BOWMAN STREET WILKES-BARRE, PA. SUB SURFACE INVESTIGATION (DER) GILES DRILLING CORPORATION BORING CONTRACTOR

SCALES: PLAN SECTION: 1" = 5'-0" DATE: 10/30/79 DRAWN BY: MIKE B. CHECKED BY: No.