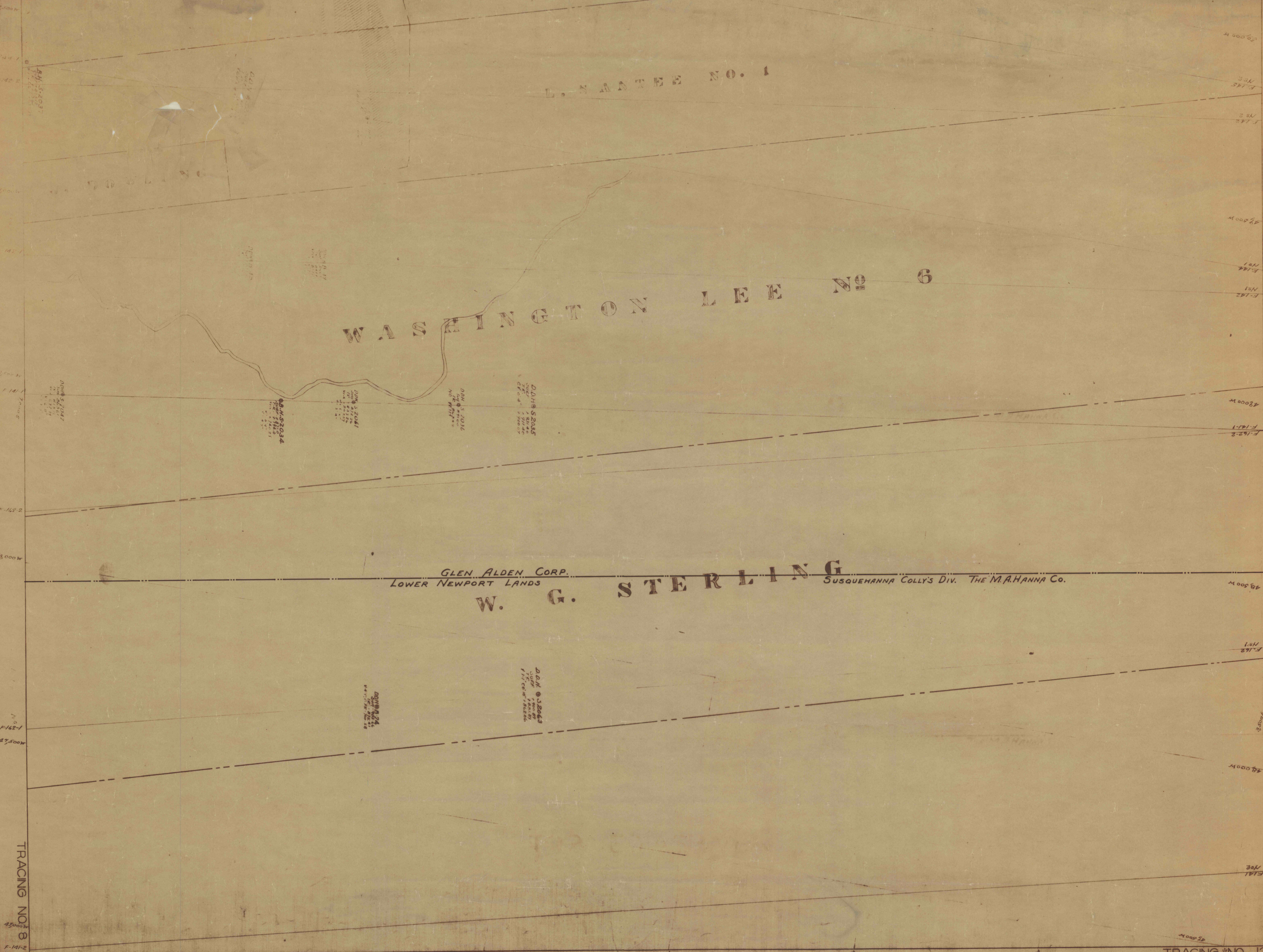
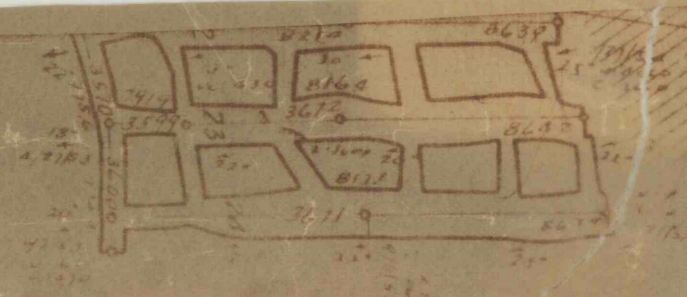


L. Santee NO. 2

L. Santee NO. 1

WASHINGTON LEE NO. 6

GLEN ALDEN CORP.
LOWER NEWPORT LANDS
W. G. STERLING
SUSQUEHANNA COLLY'S DIV. THE M.A. HANNA CO.



TRACING NO. 8

TRACING NO. 12

TRACING NO. 12

NO. 1

TOP RED ASH VEIN

NO. 1