

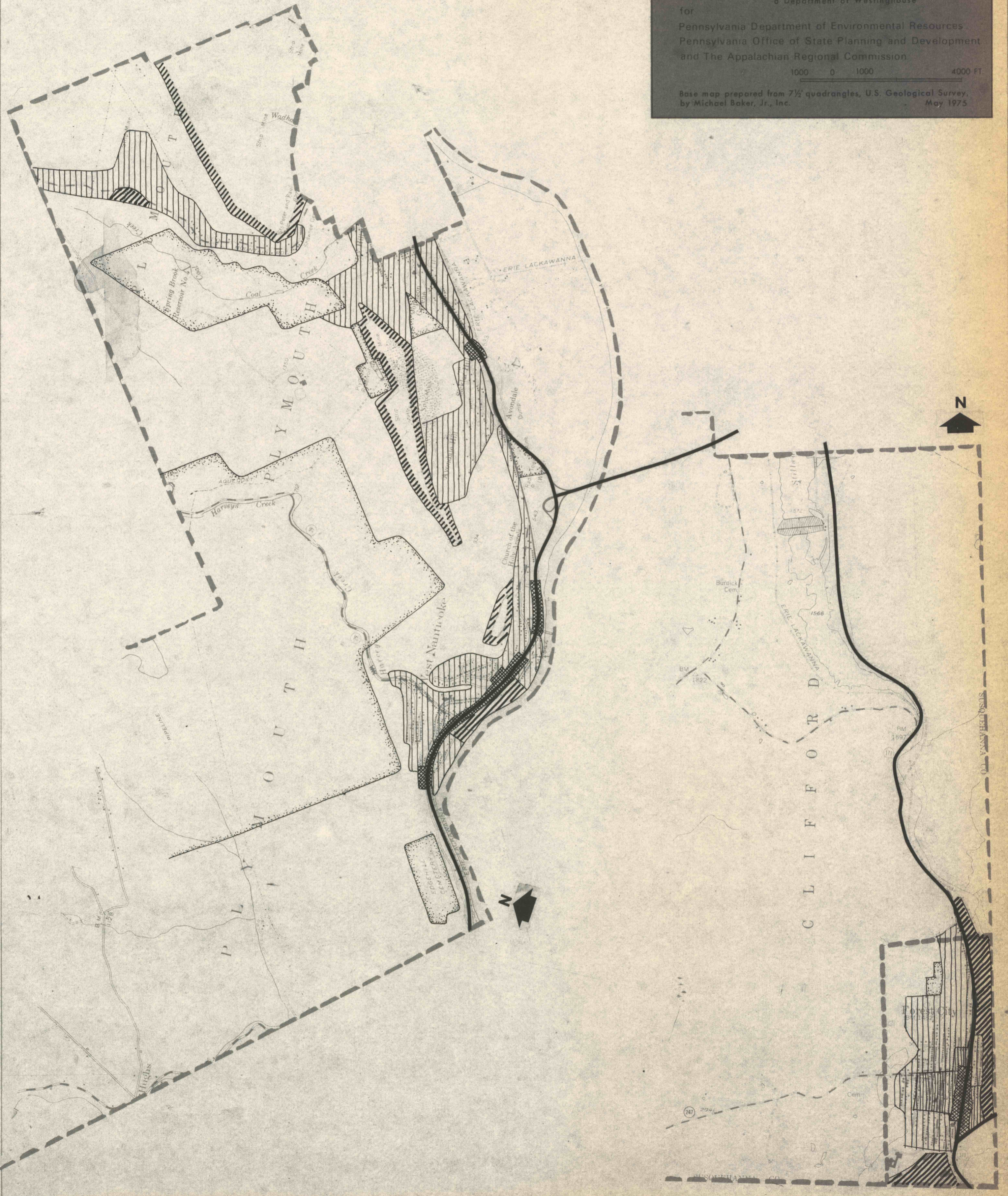
PLANNED LAND USE  
**FOREST CITY AND  
PLYMOUTH**

prepared by Marcou, O'Leary and Associates  
a Department of Westinghouse

for  
Pennsylvania Department of Environmental Resources  
Pennsylvania Office of State Planning and Development  
and The Appalachian Regional Commission

1000 0 1000 4000 FT.

Base map prepared from 7 1/2' quadrangles, U.S. Geological Survey,  
by Michael Baker, Jr., Inc. May 1975



29