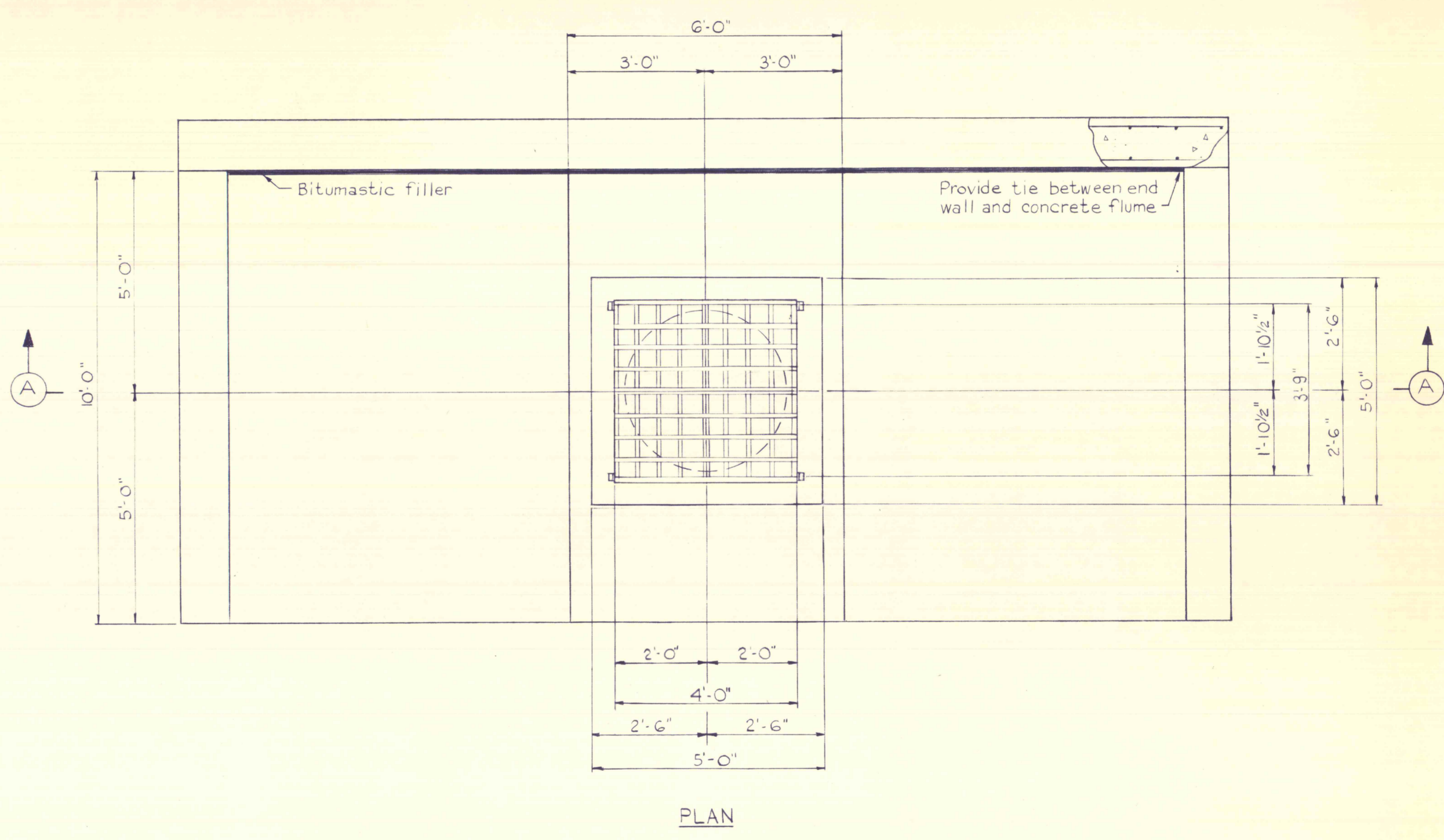
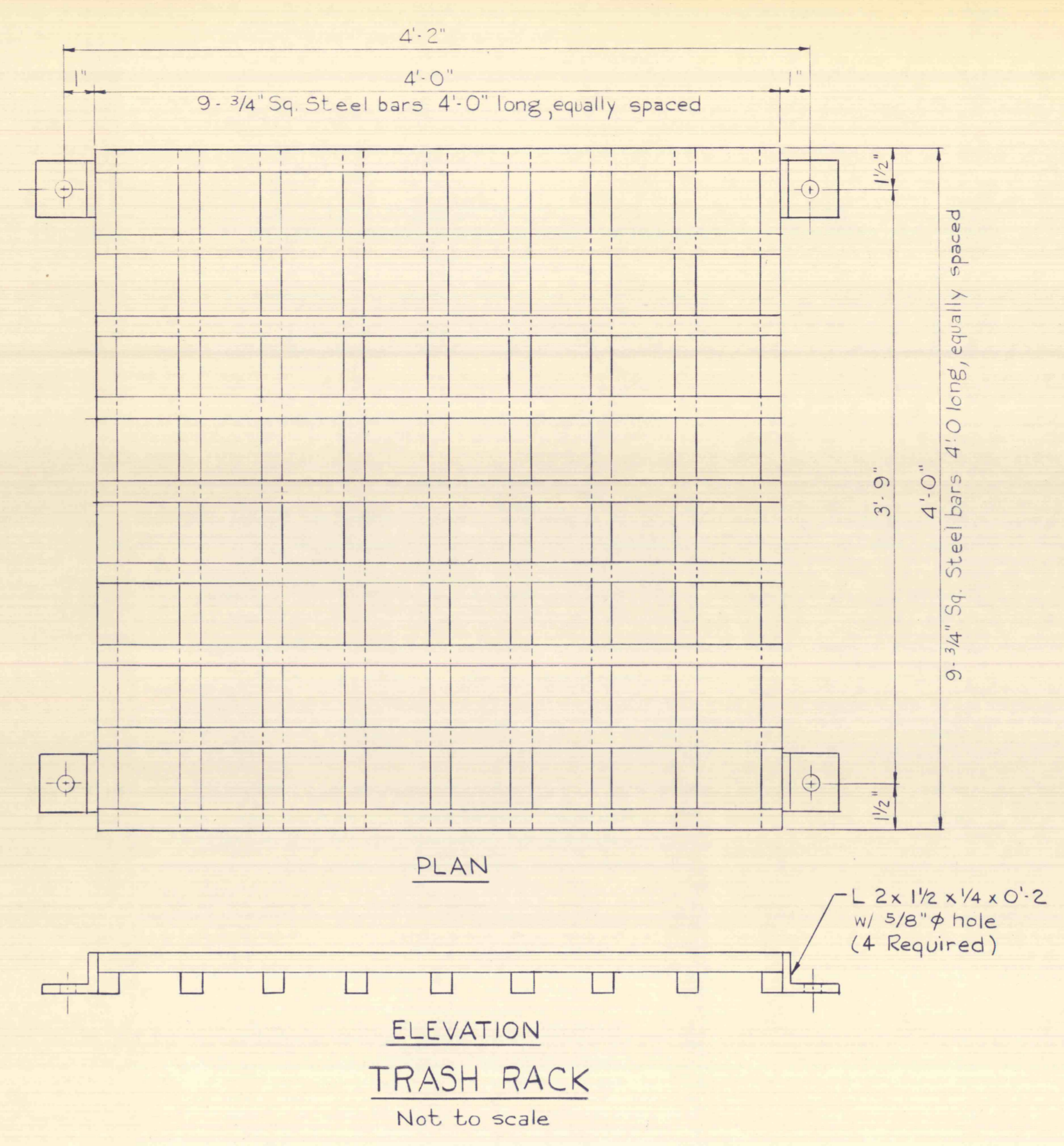
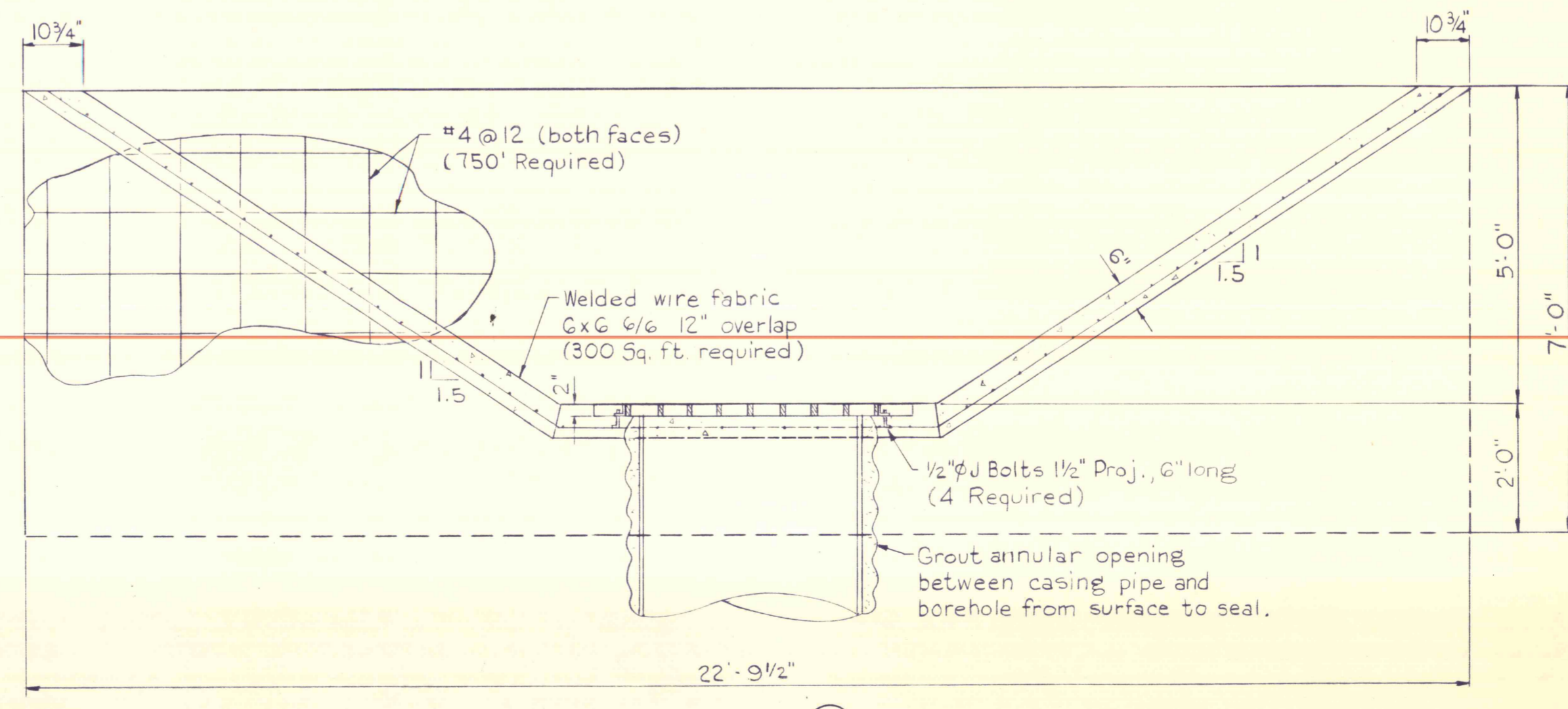


TYPICAL SECTIONS
Scale: 1 in. = 100 ft.



- NOTES:
1. Reinforced concrete facilities shall be installed in accordance with section 17 of "specifications of Department of Environmental Resources, Bureau of Engineering."
 2. 11 Cu. Yd. of concrete shall be 3000[#] and may be transit mixed from an approved source.
 3. Steel for trash rack A.S.T.M. A 36



COMMONWEALTH OF PENNSYLVANIA
DEPARTMENT OF ENVIRONMENTAL RESOURCES
OFFICE OF ENGINEERING AND CONSTRUCTION

**BURNING REFUSE BANK
GLEN LYON SECTION, NEWPORT TOWNSHIP**

CROSS SECTIONS AND DETAILS

LUZERNE COUNTY, PENNSYLVANIA

DESIGNED	DATE
DRAWN	5/9/73
SUBM. <i>A. P. ...</i>	DISTRICT ENGINEER
RECOM. <i>D. B. ...</i>	DIRECTOR BUREAU OF CONSTR.
APPR. <i>C. H. ...</i>	DEPUTY SECRETARY OF ENGR. - CONST.

NO.	DATE	REVISION	REV.	CHK.	APPR.	GROUP LEADER