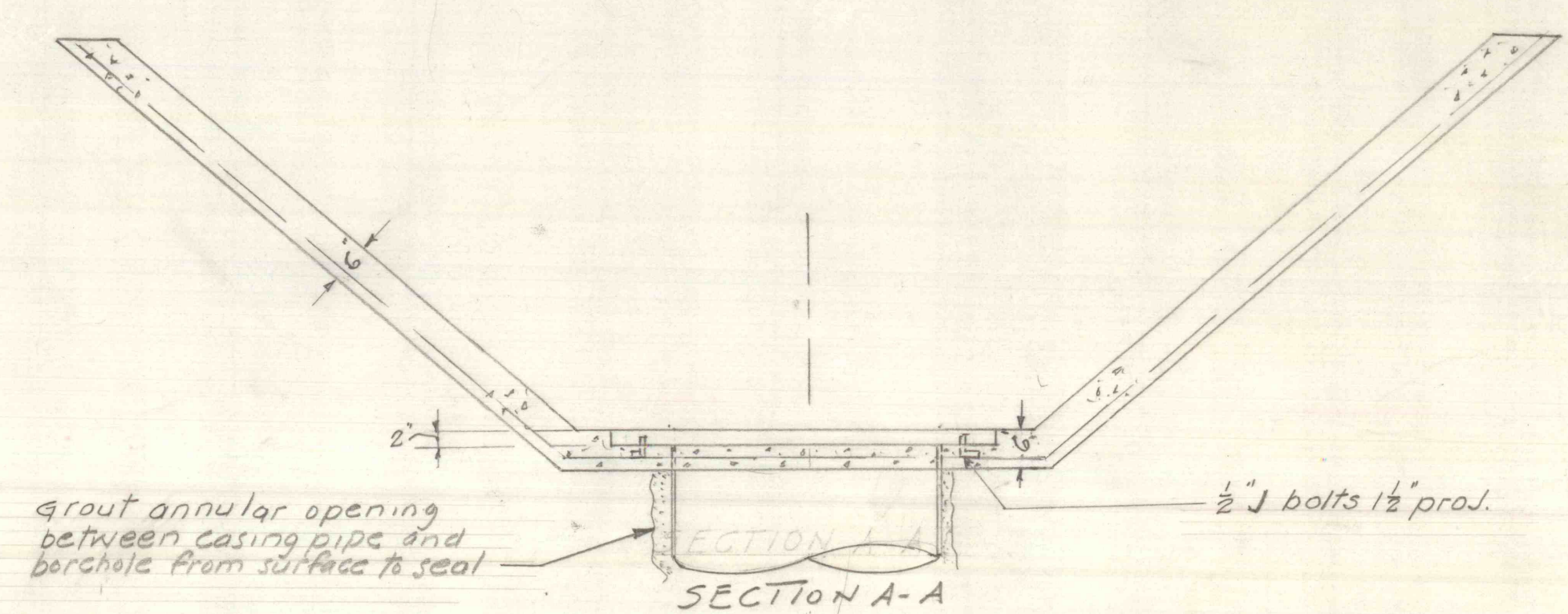
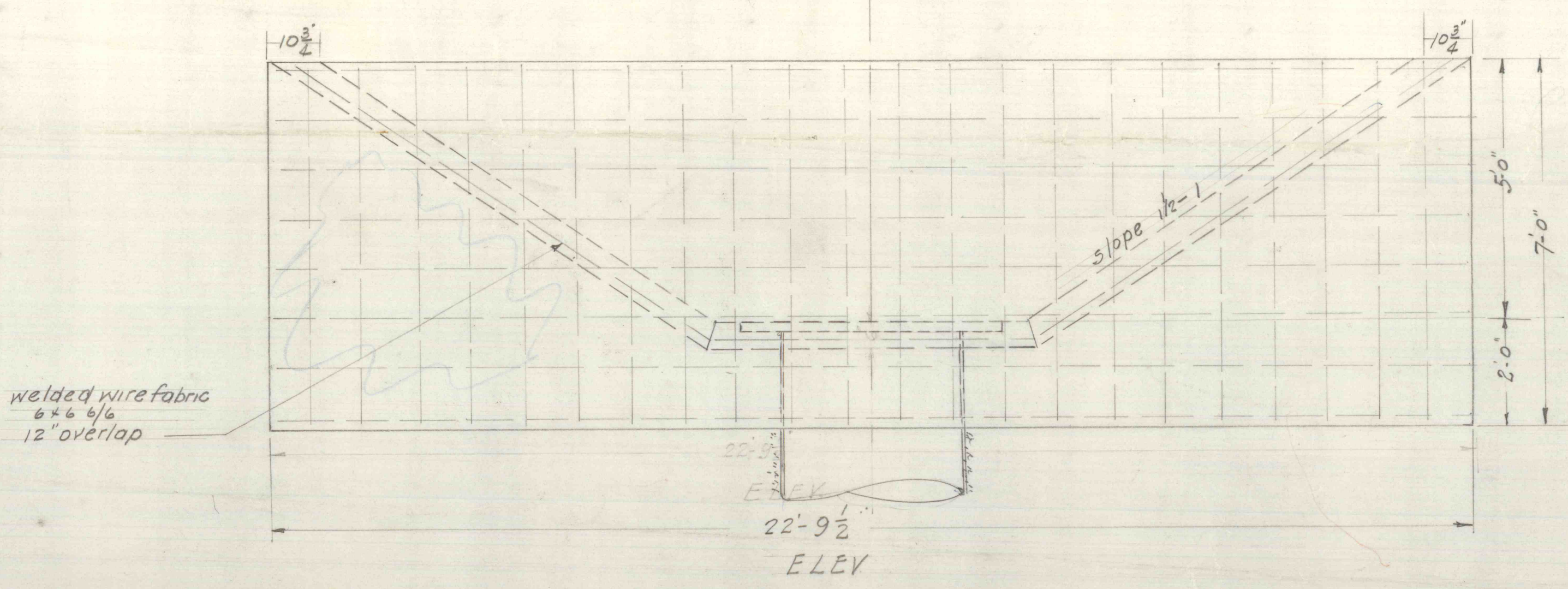
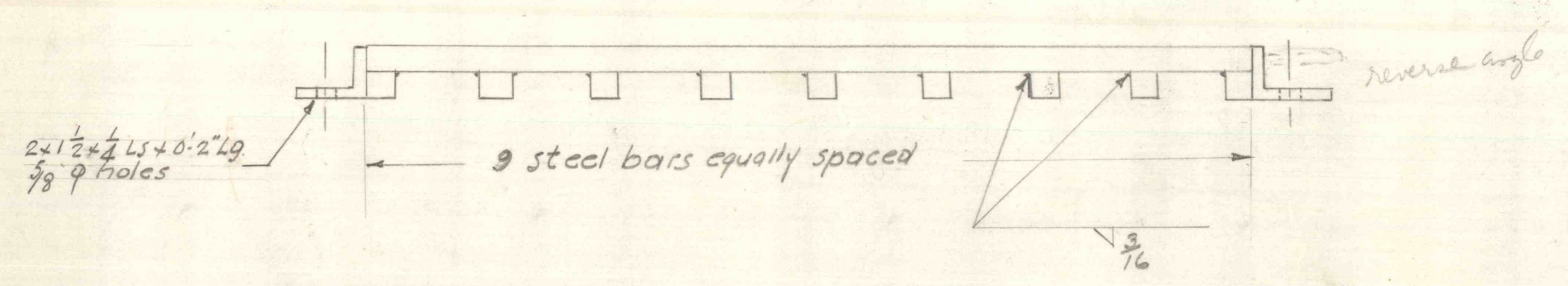


LIST OF MATERIAL	
QUANTITY	DESCRIPTION
4	2 1/2 x 1 1/2 x 1/2 Ls x 0.27g
18	3/8 steel bars 4.0'lg
300 sqft	Welded wire fabric 6x6 4/6
750'	1/2" rein steel bars
11 C.Y	Concrete (3000*)
4	J bolts 1/2" x 0.6"lg



- Notes:
1. Reinforced concrete facilities shall be installed in accordance with section 17 of 'specifications' of Pa. Dept. of Forests & Waters
  2. Concrete shall be 3000\* and may be transit mixed from an approved source
  3. Steel for trash rack ASTM A36



COMMONWEALTH OF PENNSYLVANIA  
 DEPARTMENT OF ENVIRONMENTAL RESOURCES  
 ENGINEERING & CONSTRUCTION  
 THE LAND AND WATER CONSERVATION-RECLAMATION  
 ACT. AIR POLLUTION ELIMINATION PROJECT NO: SL-218  
 WATER TRANSITION FACILITIES  
 BURNING REFUSE BANK  
 GLEN LYON Section, NEWPORT Township  
 LUZERNE COUNTY  
 Scale as noted. APRIL 1973

DESIGNED:	DATE	CHIEF DESIGNER					
DRAWN:	SUBM.	CHIEF DIV. OF FLOOD CONTROL					
NO.	DATE	REVISION	REV.	CHK.	APPR.	APPR.	CHIEF ENGINEER