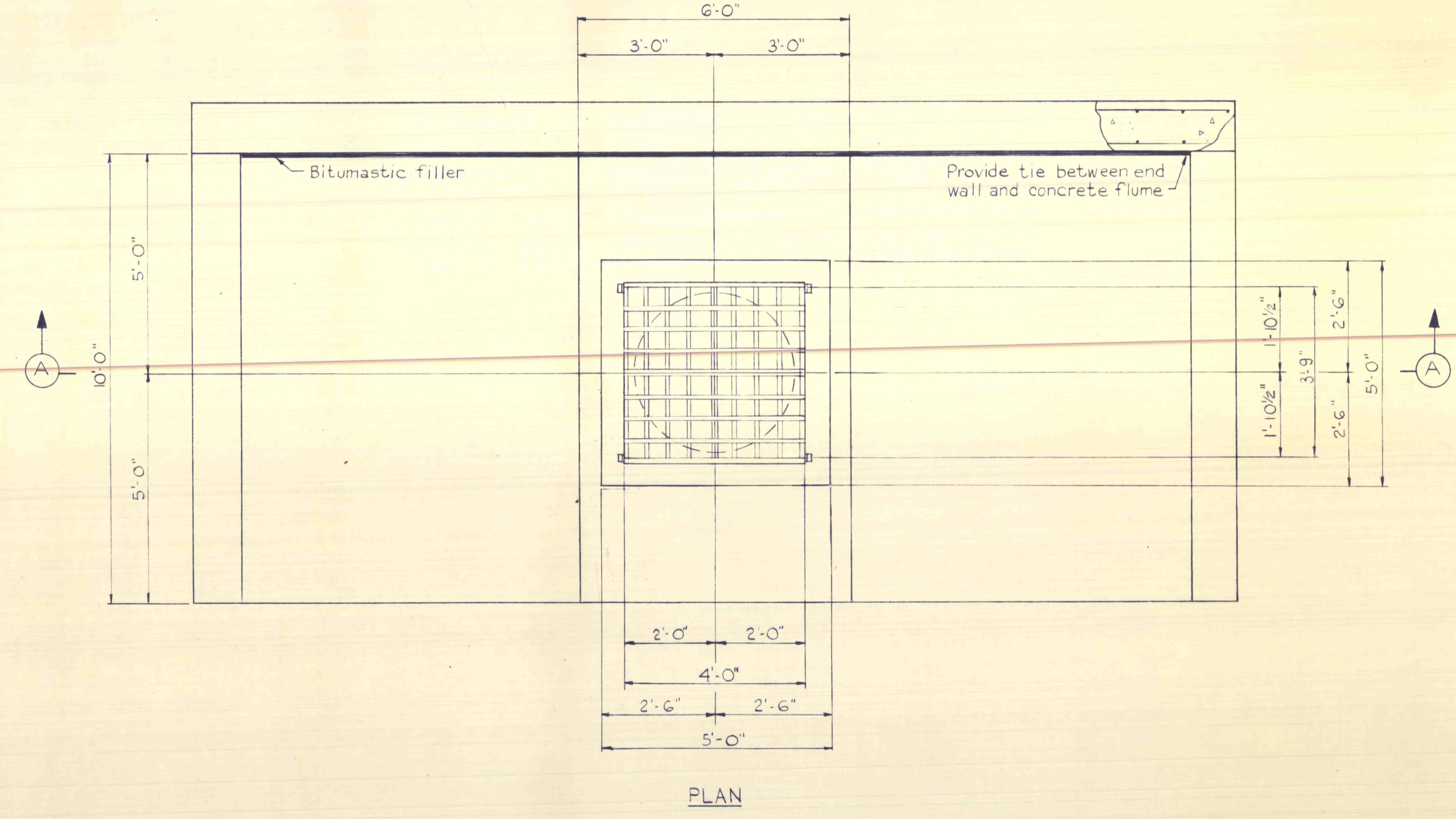
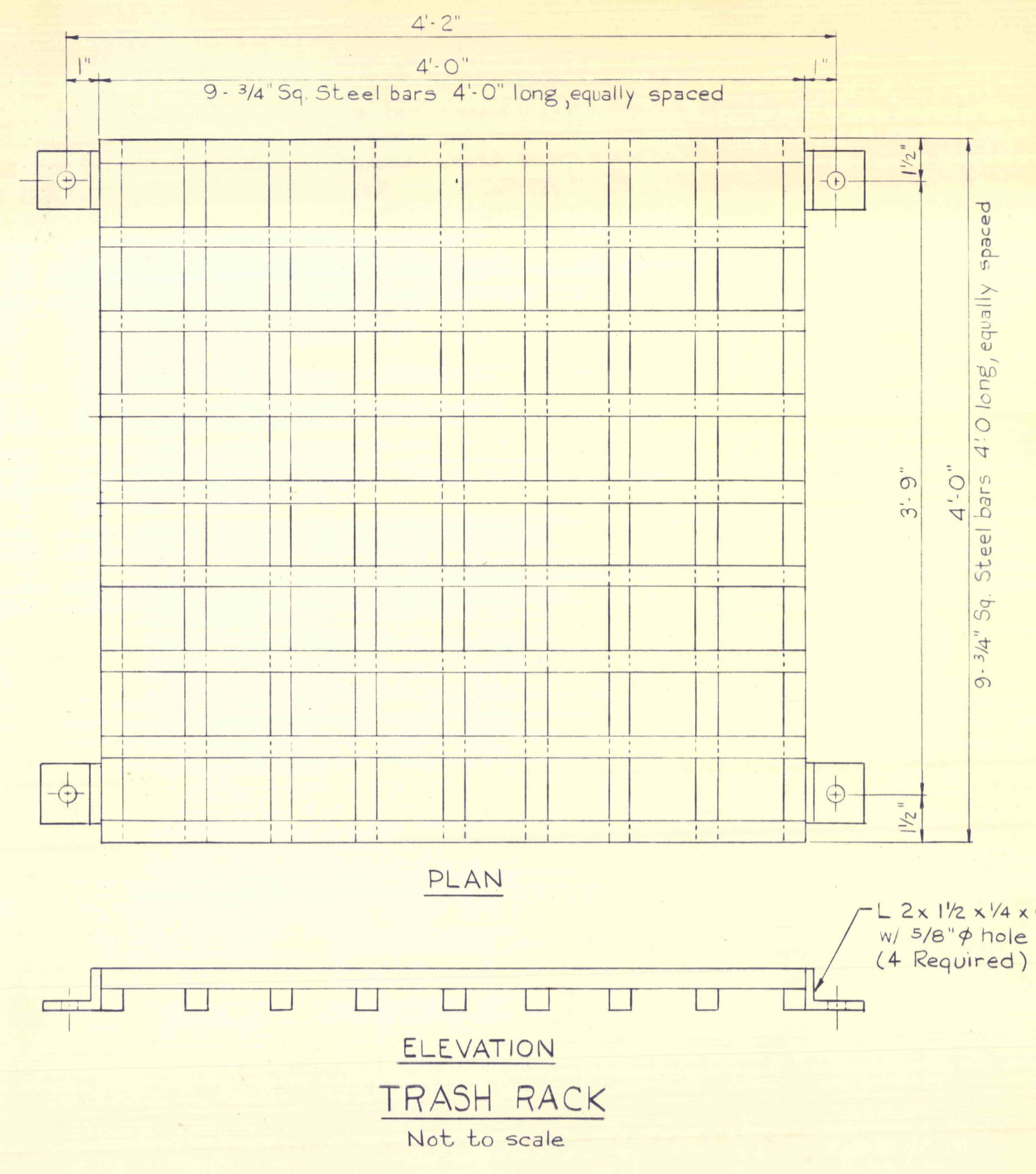
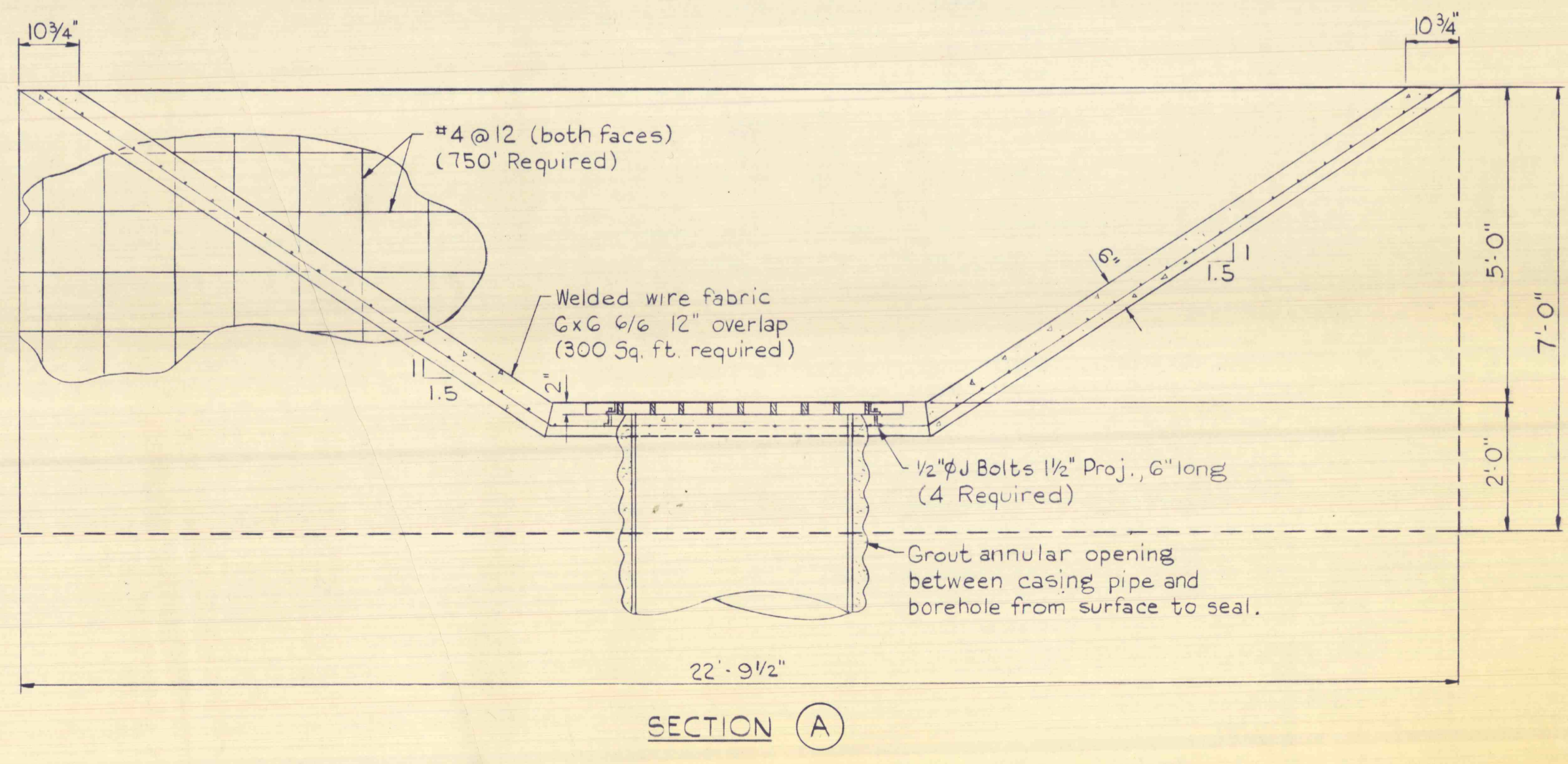


TYPICAL SECTIONS
Scale: 1 in. = 100 ft.



- NOTES:
1. Reinforced concrete facilities shall be installed in accordance with section 17 of "specifications of Department of Environmental Resources, Bureau of Engineering."
 2. 11 Cu. Yd. of concrete shall be 3000[#] and may be transit mixed from an approved source.
 3. Steel for trash rack A.S.T.M. A 36



TRANSITION DETAILS
Scale 1/2 in. = 1 ft.

COMMONWEALTH OF PENNSYLVANIA
DEPARTMENT OF ENVIRONMENTAL RESOURCES
OFFICE OF ENGINEERING AND CONSTRUCTION

**BURNING REFUSE BANK
GLEN LYON SECTION, NEWPORT TOWNSHIP**

CROSS SECTIONS AND DETAILS

LUZERNE COUNTY, PENNSYLVANIA

DESIGNED	DATE	DISTRICT ENGINEER					
DRAWN		DIRECTOR					
		BUREAU OF CONSTR.					
		DEPUTY SECRETARY					
		OF ENGR. - CONSTR.					
NO.	DATE	REVISION	REV.	CHK.	APPR.	GROUP LEADER	APPR.