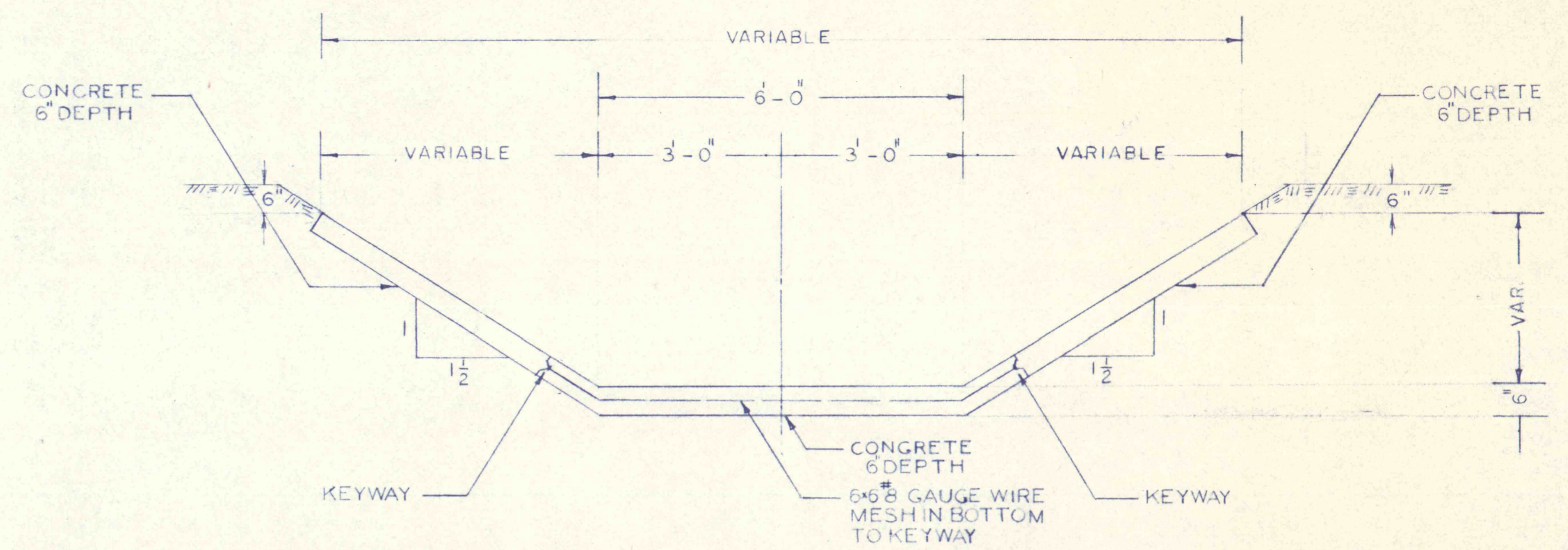
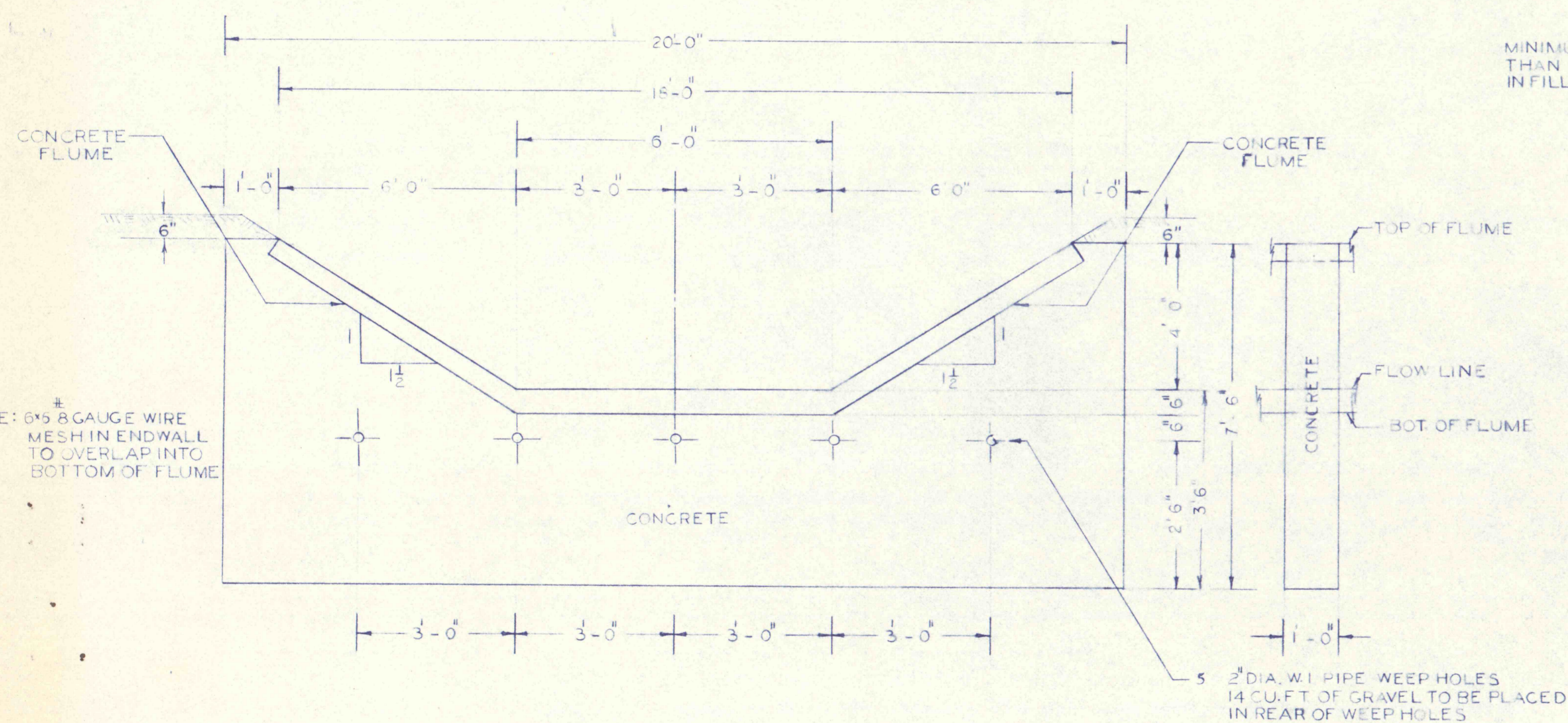


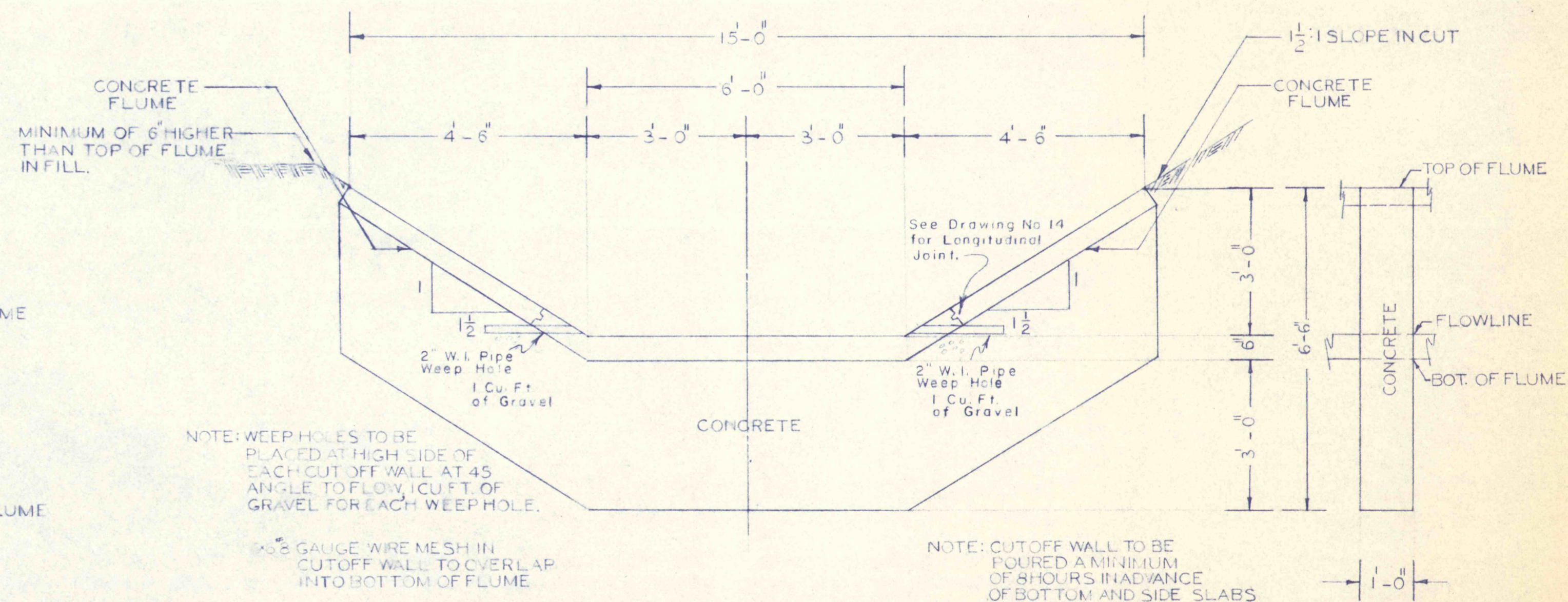
TYPICAL SECTION
OF
EARTH DITCH
STA. 1+58 TO STA. 7+60



TYPICAL SECTION
OF
CONCRETE FLUME



ENDWALL SECTION
STA. 7+60



TYPICAL SECTION
OF
CUTOFF WALL
STA. 17+50

STREAM POLLUTION ABATEMENT PROJECT NO. SL-168
 ESPY CREEK CHANNEL IMPROVEMENTS
 NANTICOKE CITY, HANOVER & NEWPORT TWPS., LUZ. CO., PA.
 PENNA. DEPT OF ENVIRONMENTAL RESOURCES
 SCALE: As noted
 Drawing No. 15