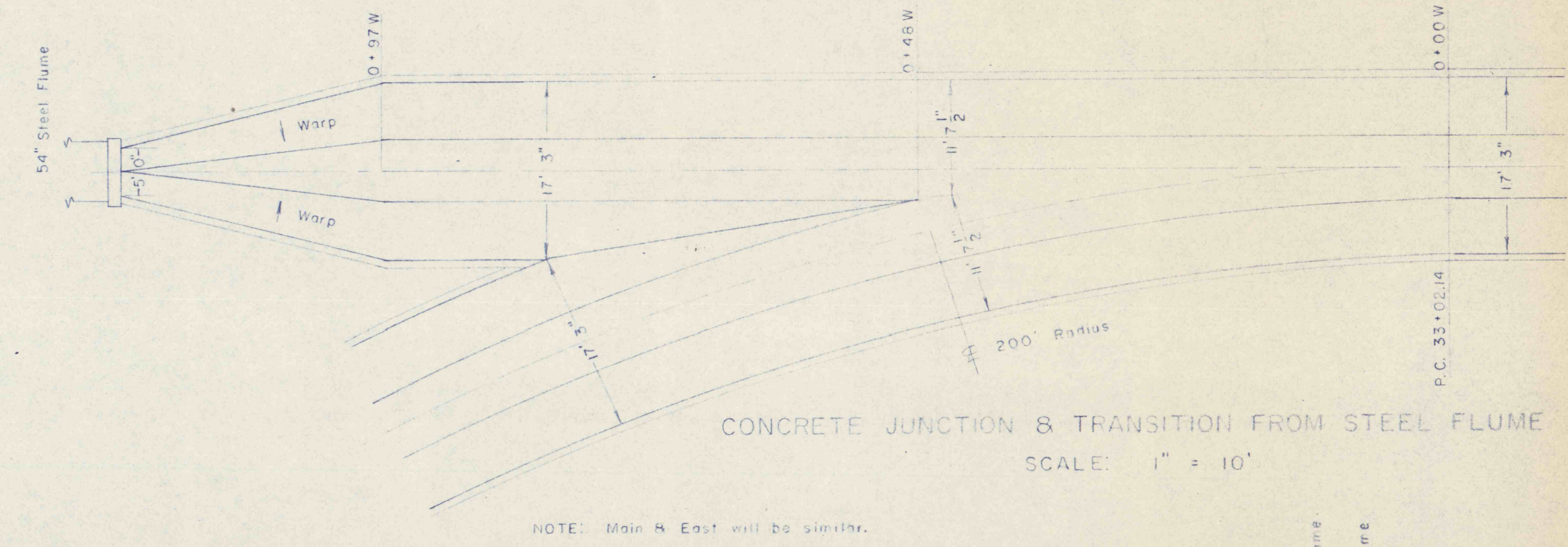
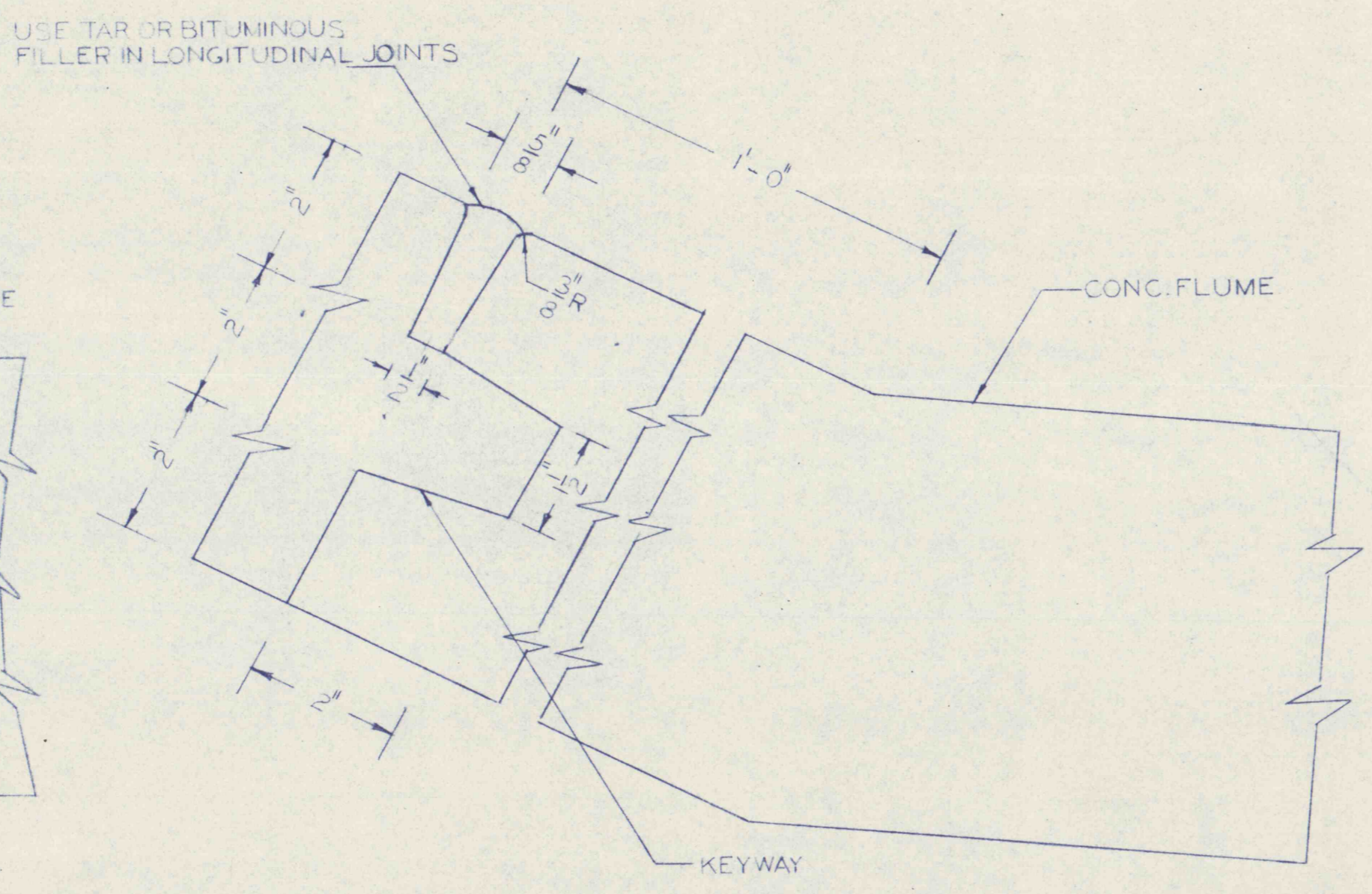
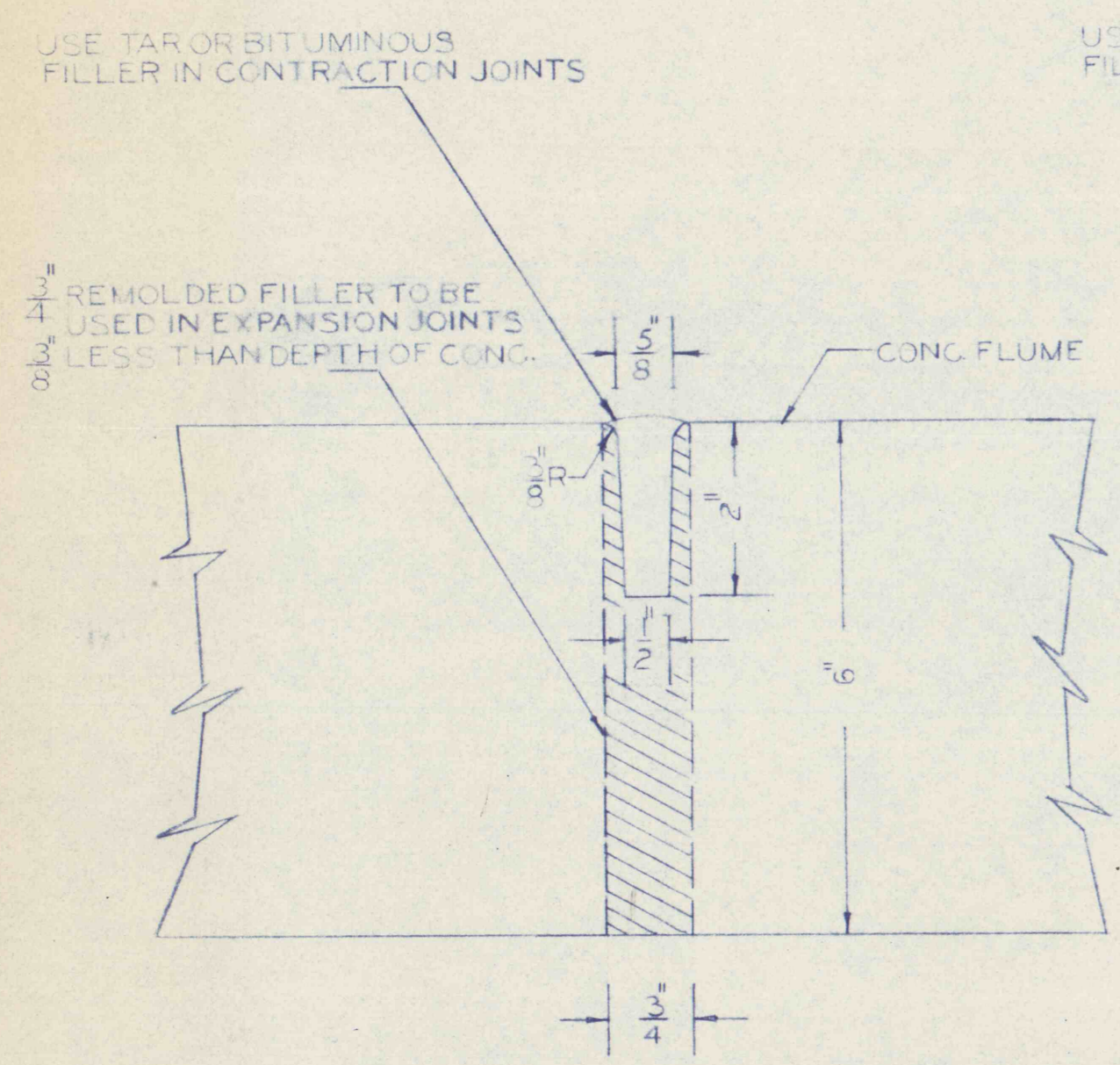


0+00 West end Main  
3'9" Flume depth

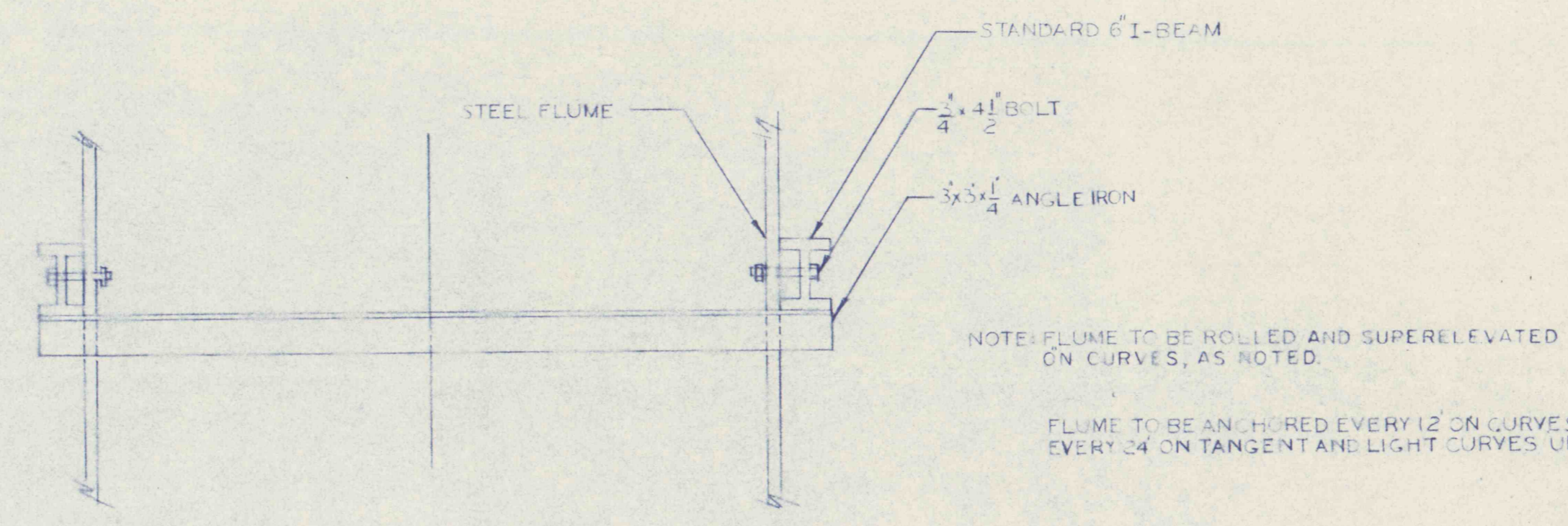
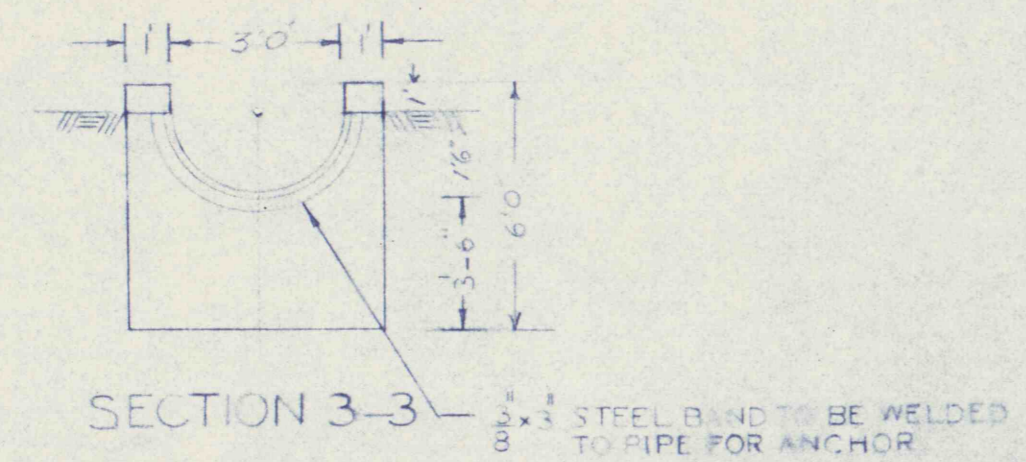
Junction 10" Thick  
Side walls 1 1/2 to 1



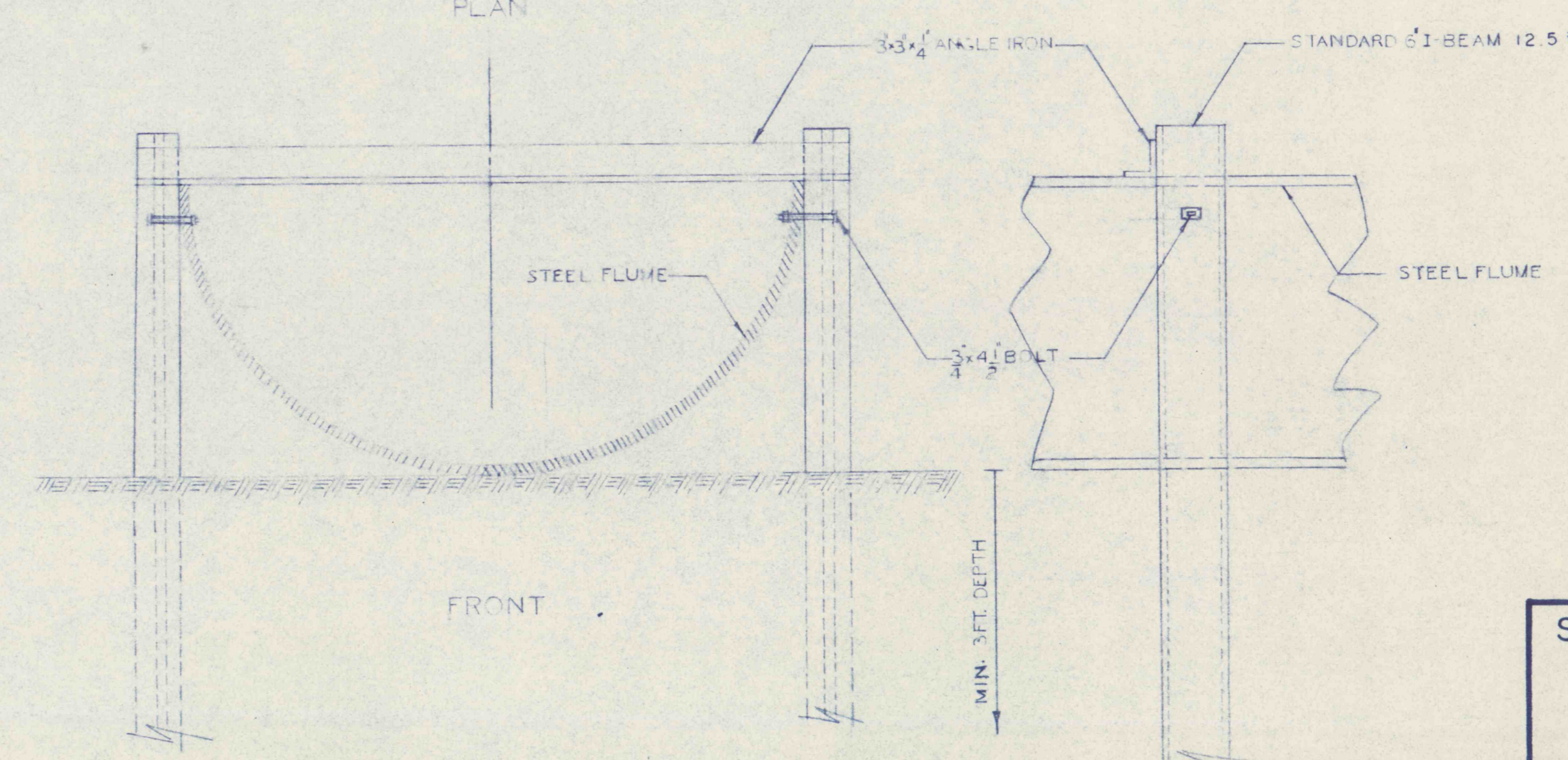
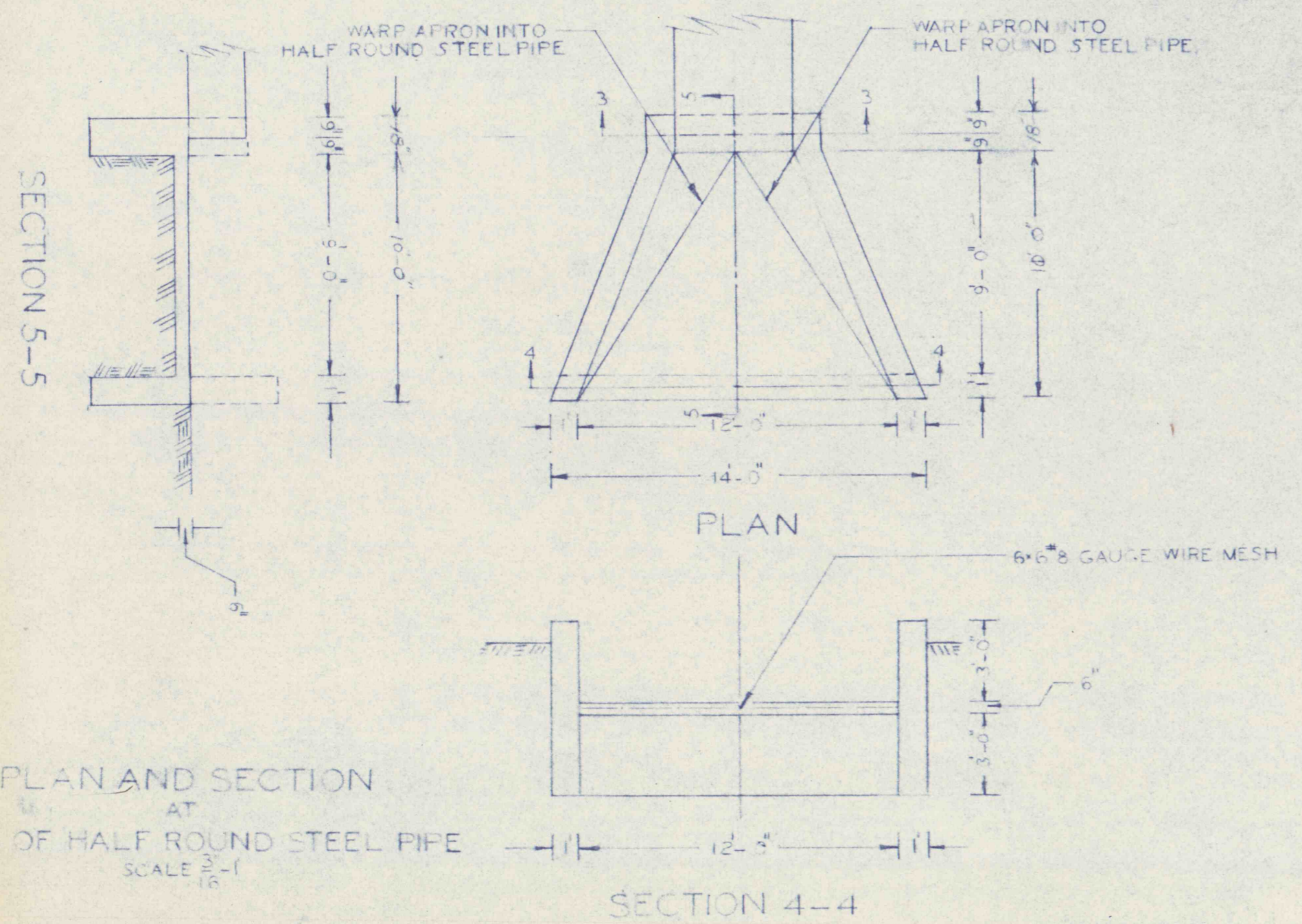
CONCRETE JUNCTION & TRANSITION FROM STEEL FLUME  
SCALE: 1" = 10'

TRANSVERSE CONTRACTION JOINTS  
20 FT. CENTERS  
EXPANSION JOINTS  
100 FT. CENTERS

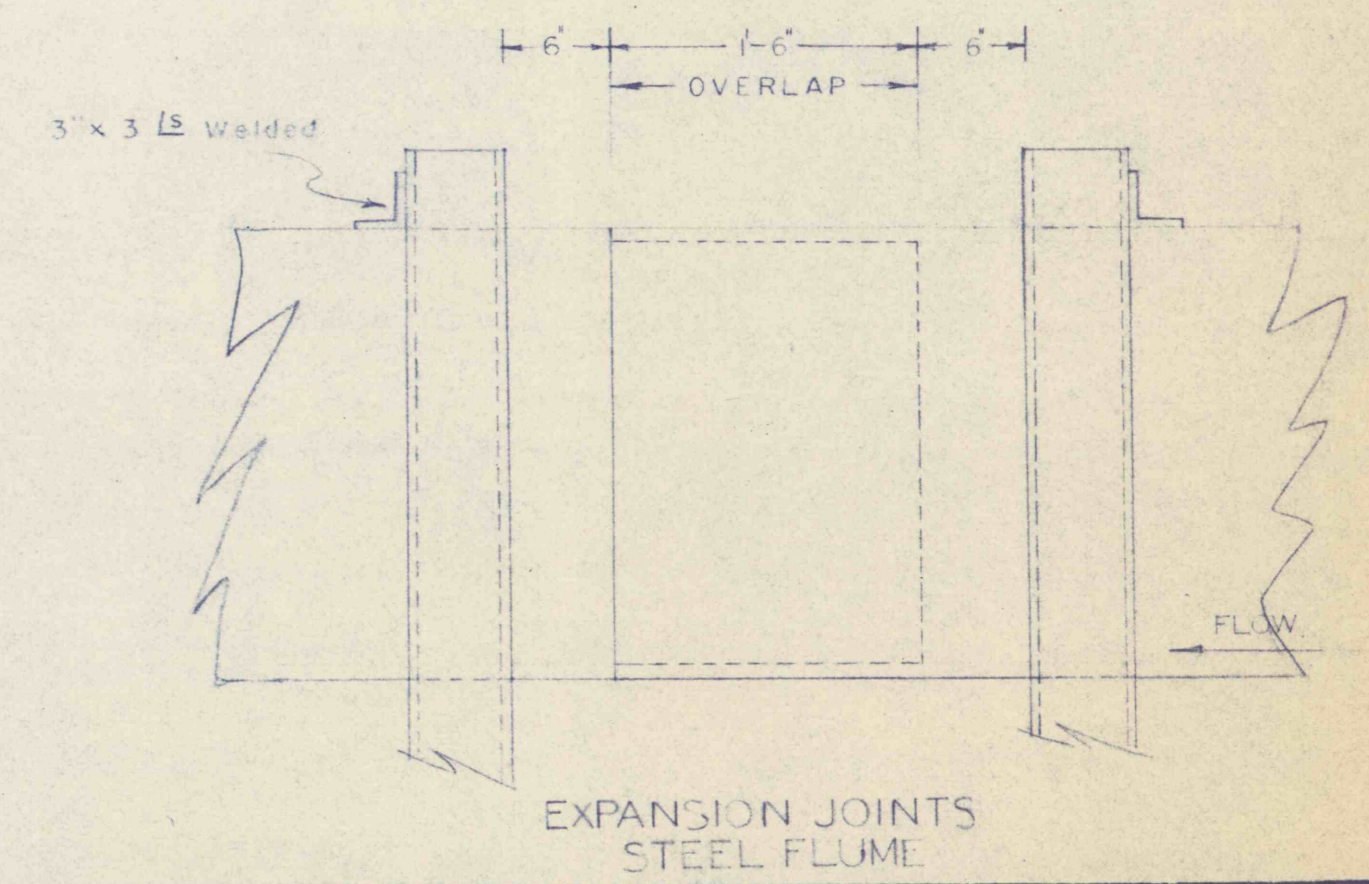
LONGITUDINAL JOINT



18" CONCRETE WALL CONNECTION  
54" & 60" ST. FL. TO CONCRETE JUNCTIONS  
SCALE: 1/4" = 12"



STEEL FLUME CONSTRUCTION FOR SURFACE INSTALLATION



STREAM POLLUTION ABATEMENT PROJECT NO. SL-168  
ESPY CREEK CHANNEL IMPROVEMENTS  
NANTICOKE CITY, HANOVER & NEWPORT TWPS., LUZ. CO., PA.  
PENNA. DEPT. OF ENVIRONMENTAL RESOURCES  
SCALE: As noted  
Drawing No. 14

JANUARY 1971  
14 of 15