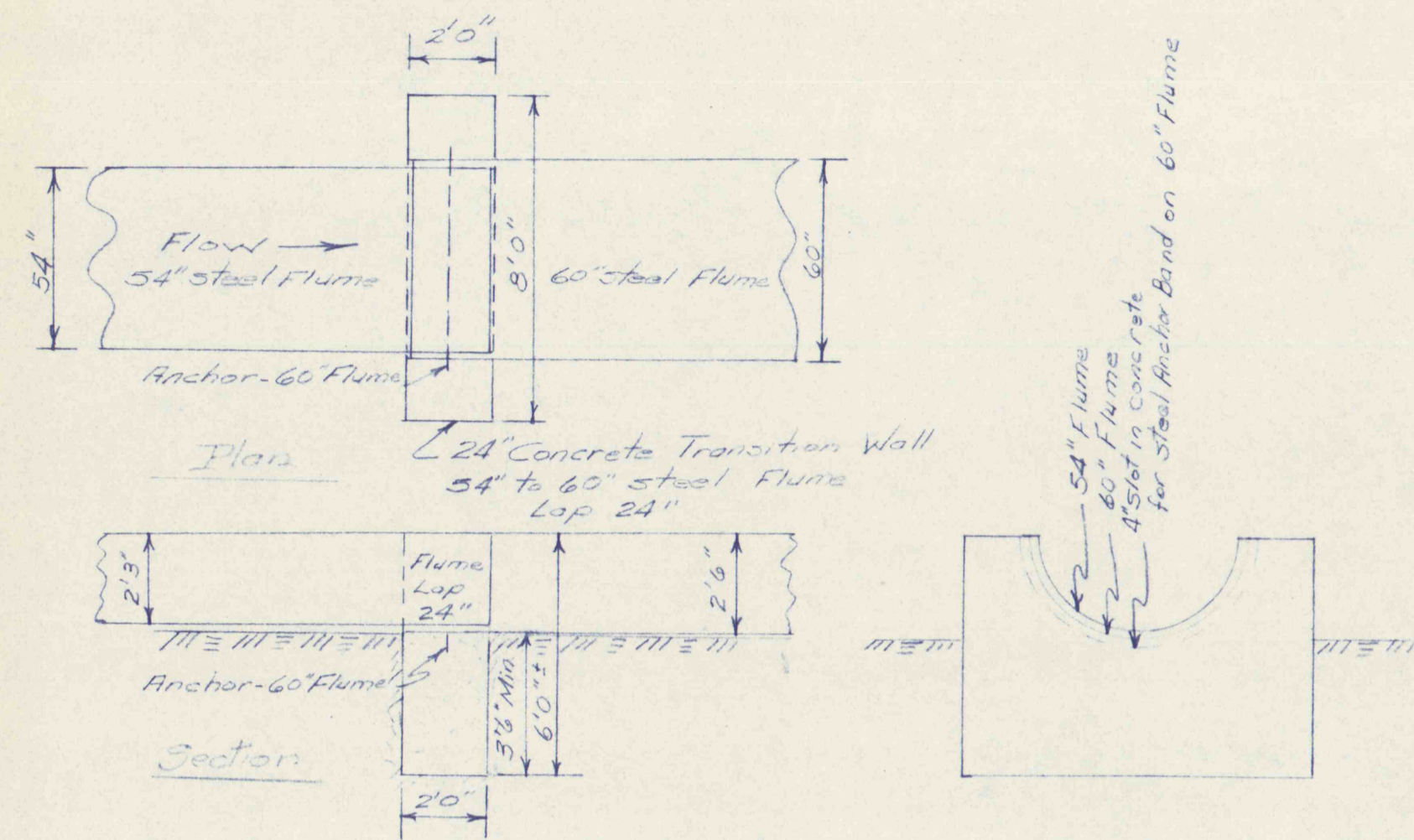
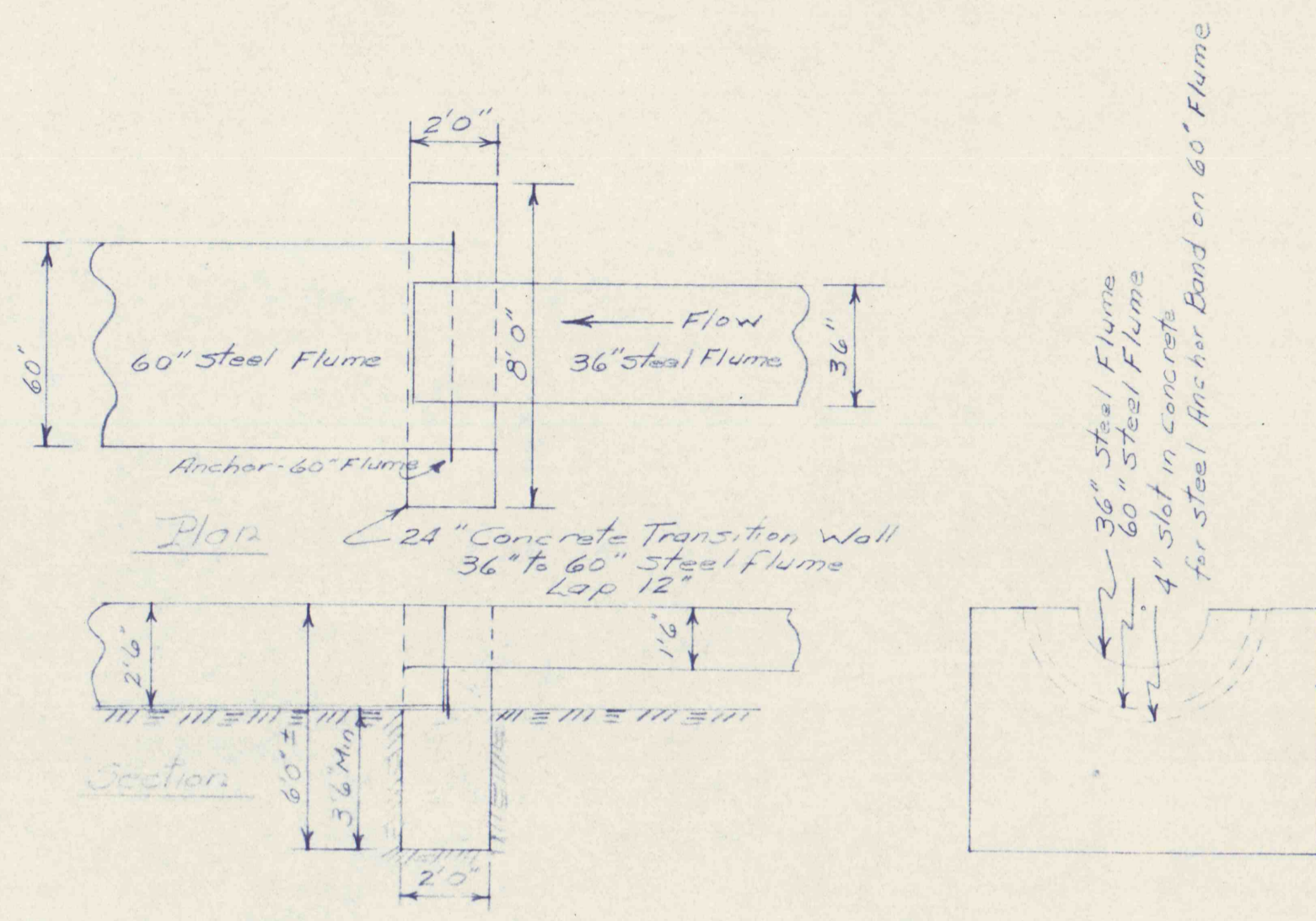


24" TRANSITION WALL  
 @ 17+10.46 Part J



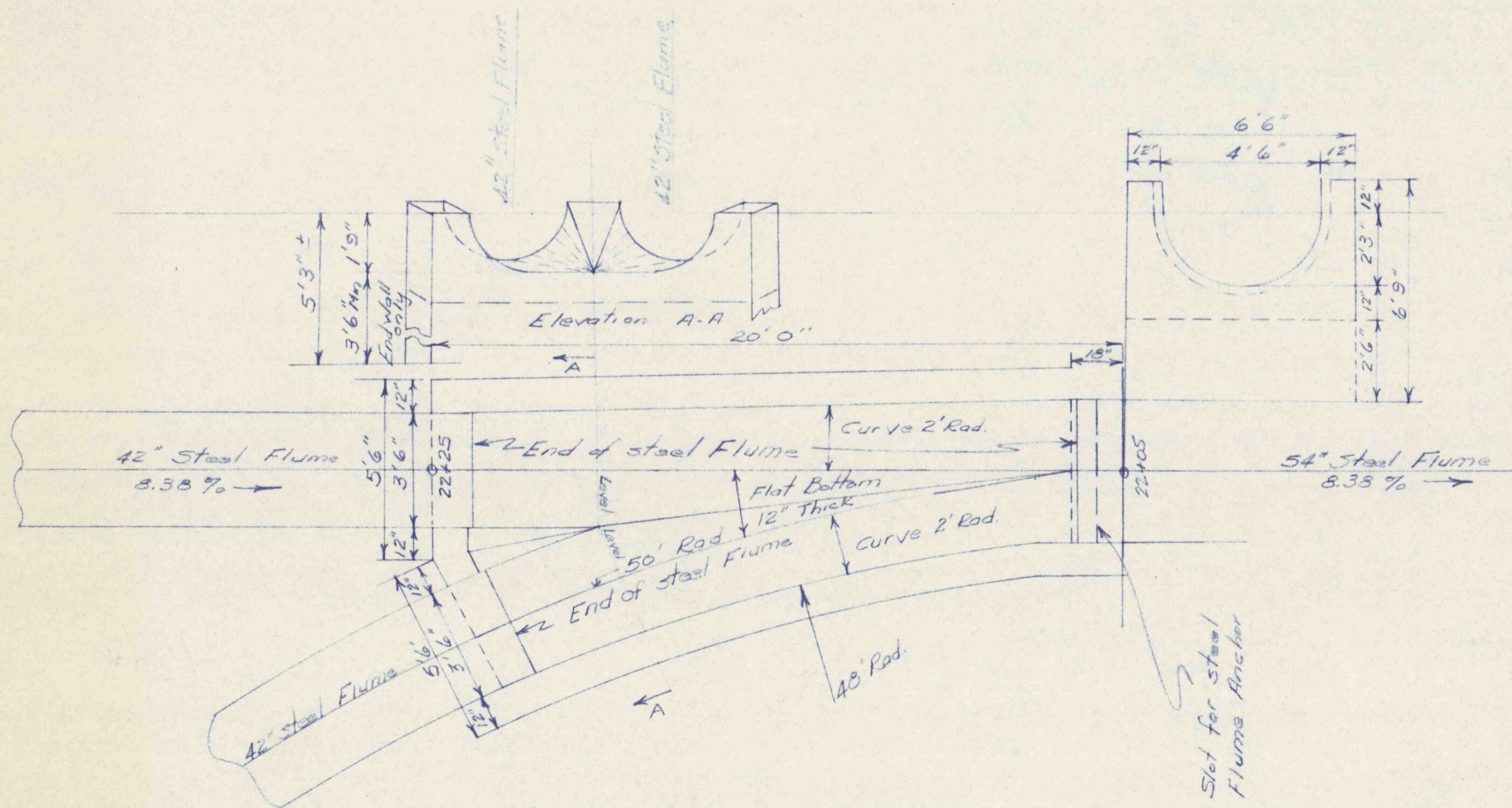
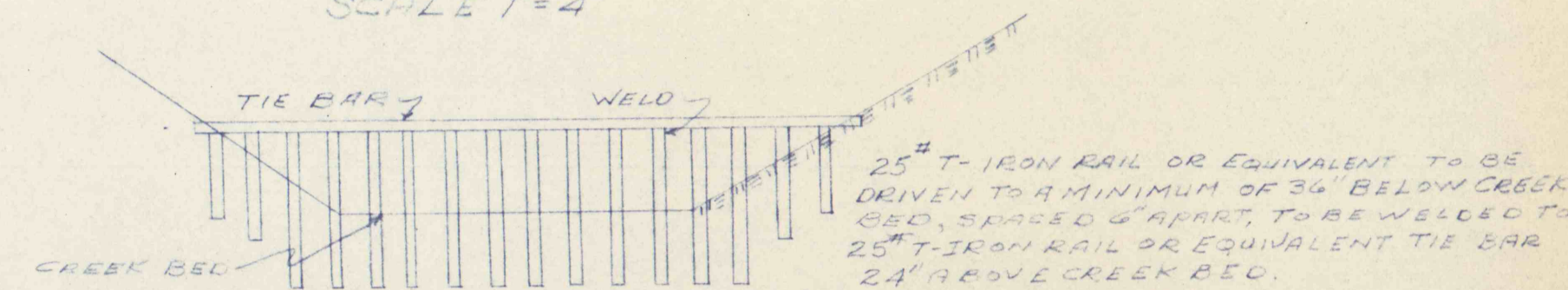
Scale 1/4" = 12"

24" TRANSITION WALL  
 @ 14+20 Part H



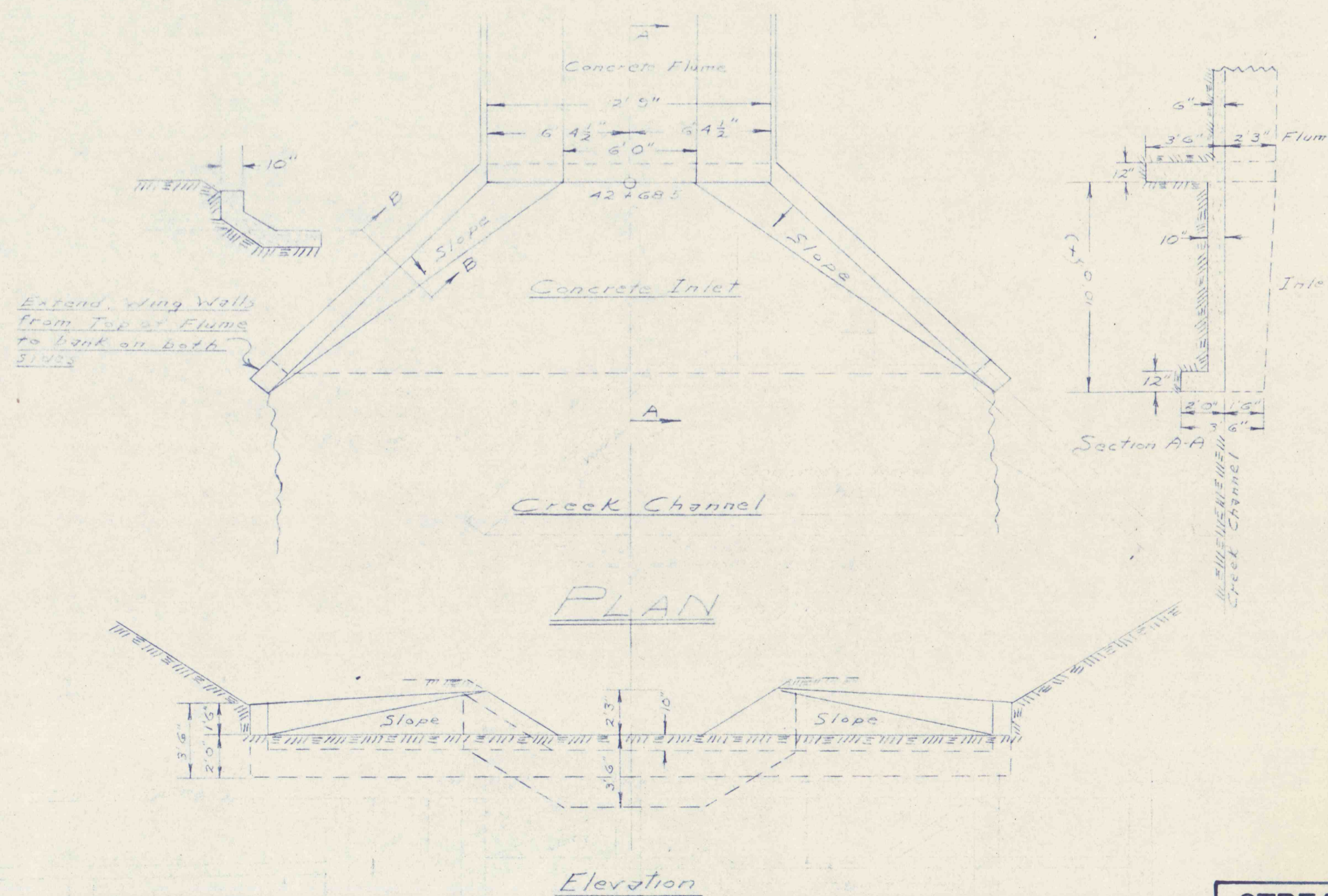
Scale 1/4" = 12"

TYPICAL SECTION OF TRASH RACK TO BE INSTALLED BEYOND INLET OF ALL BRANCHES  
 SCALE 1" = 4'



CONCRETE JUNCTION AT STA 22+05 WEST

Scale 1/4" = 12"



Scale 1/16" = 12"

STREAM POLLUTION ABATEMENT PROJECT NO. SL-168  
 ESPY CREEK CHANNEL IMPROVEMENTS  
 NANTICOKE CITY, HANOVER & NEWPORT TWPS., LUZ. CO., PA.  
 PENNA. DEPT. OF ENVIRONMENTAL RESOURCES  
 SCALE: As noted  
 Drawing No. 13

JANUARY 1971

13 of 15