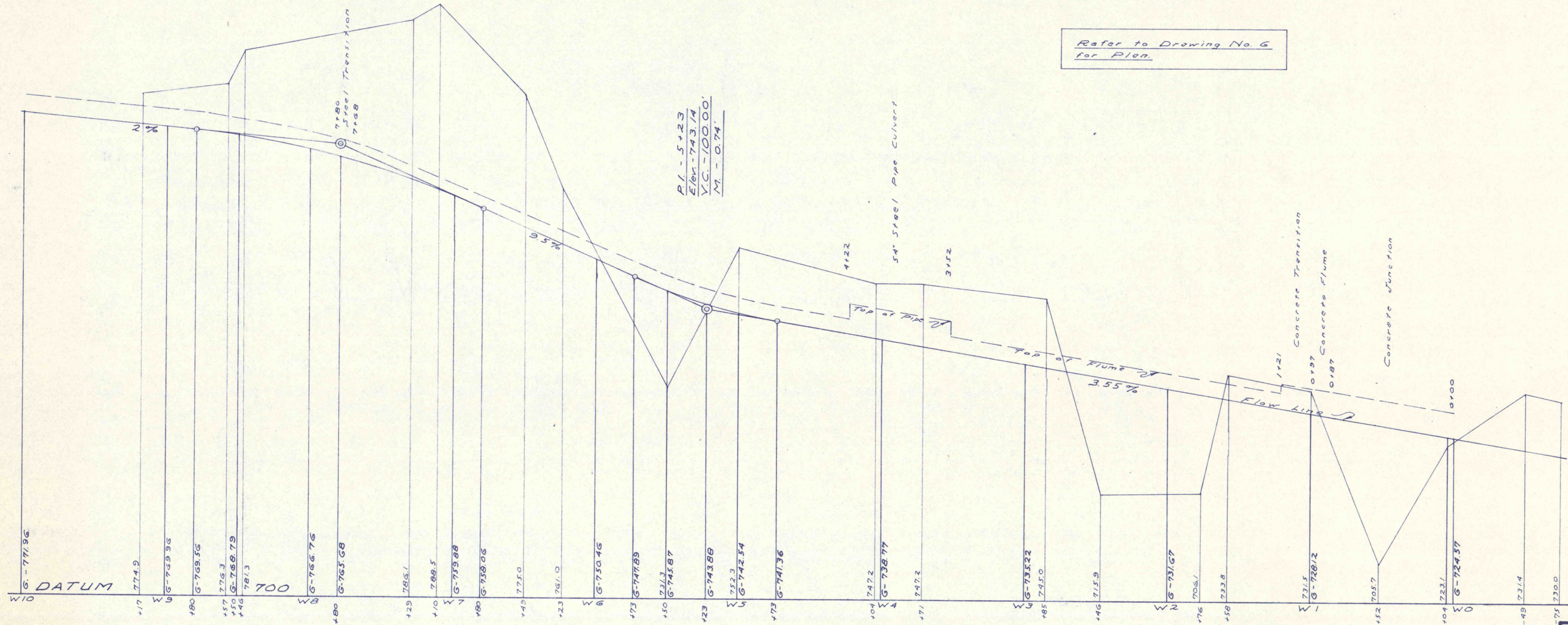


P.I. - 7180
 ELEV. - 767.55
 V.C. - 200.00'
 M. - 1.88

P.I. - 5123
 ELEV. - 743.74
 V.C. - 100.00'
 M. - 0.74

Refer to Drawing No. 6 for Plan.



WEST BRANCH - SCALE: HOR. 1" = 50'
 VERT. 1" = 10'

STREAM POLLUTION ABATEMENT PROJECT NO. SL-168

ESPY CREEK CHANNEL IMPROVEMENTS

NANTICOKE CITY, HANOVER & NEWPORT TOWNSHIPS, LUZ. CO., PA.

PENNA. DEPT. OF ENVIRONMENTAL RESOURCES

SCALE: As noted

JANUARY 1971

Drawing No. II

II of 15