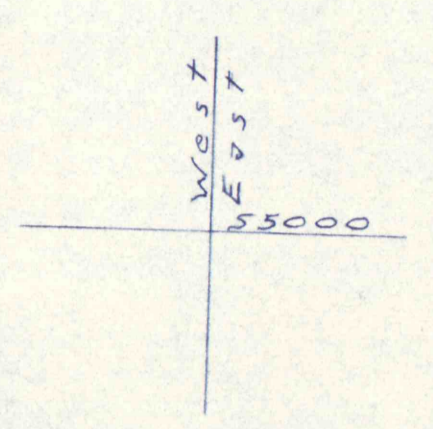
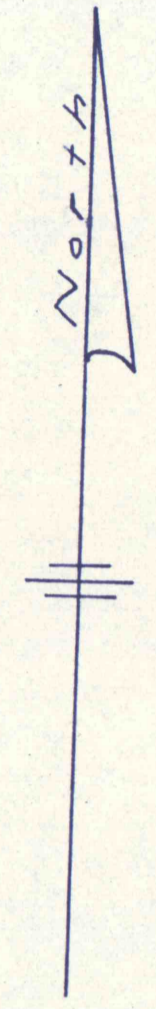


WEST BRANCH -      SCALE: HOR. 1" = 50'  
VERT. 1" = 10'



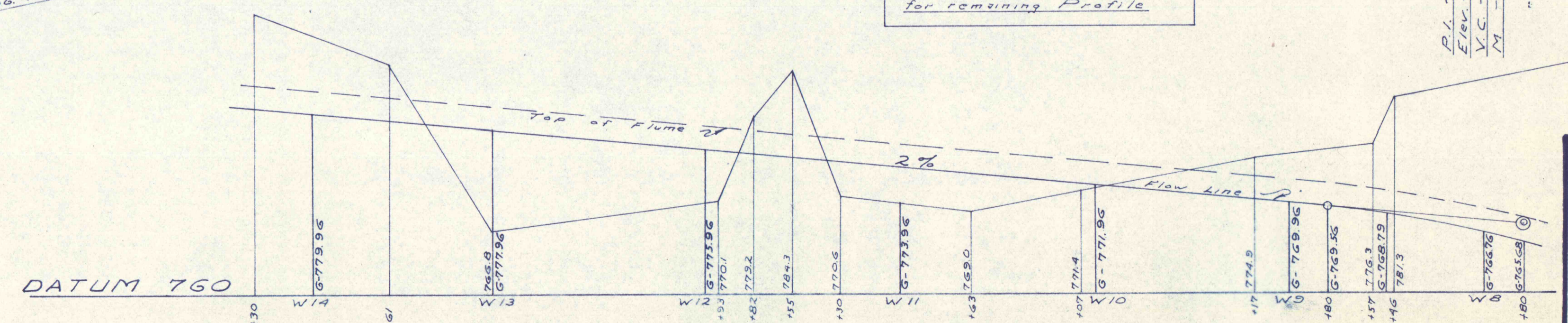
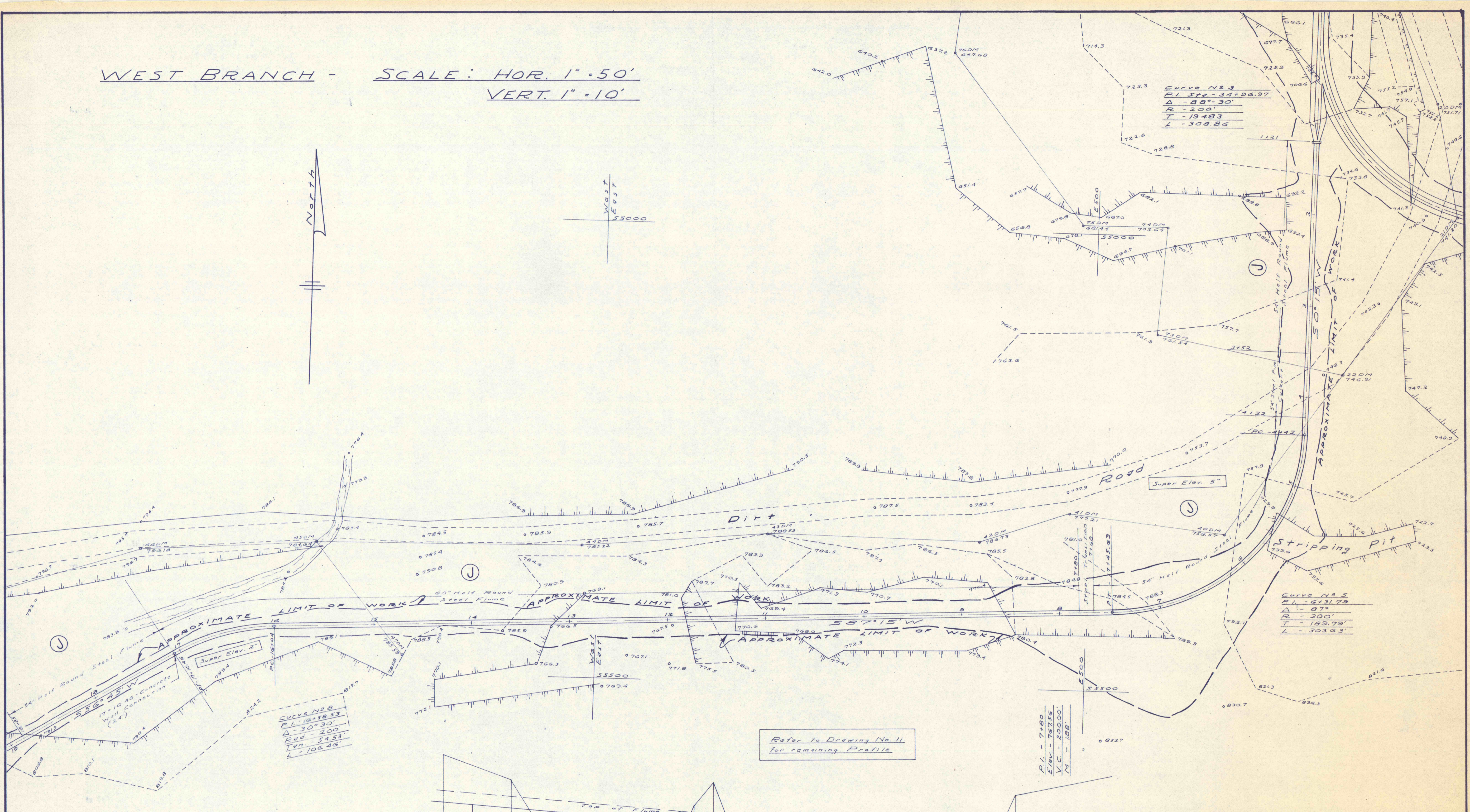
**CURVE NO. 3**  
 P.I. - 572.34 + 96.97  
 Δ - 88° 30'  
 R - 200'  
 T - 194.83  
 L - 308.86

**CURVE NO. 5**  
 P.I. - 613.79  
 Δ - 87°  
 R - 200'  
 T - 189.79'  
 L - 303.63'

**CURVE NO. 8**  
 P.I. - 16 + 58.53  
 Δ - 30° 30'  
 R - 200'  
 T - 54.53'  
 L - 106.46'

Refer to Drawing No. 11  
 for remaining Profile

P.I. - 71.80  
 Elev. - 767.56  
 V.C. - 200.00'  
 M - 188'



**STREAM POLLUTION ABATEMENT PROJECT NO. SL-168**  
**ESPY CREEK CHANNEL IMPROVEMENTS**  
 NANTICOKE CITY, HANOVER & NEWPORT TWP., LUZ. CO., PA.  
 PENNA. DEPT. OF ENVIRONMENTAL RESOURCES  
 SCALE: As noted      JANUARY 1971  
 Drawing No. 6      6 of 15