

810' DATUM

810' DATUM

725' DATUM

725' DATUM

B-1
806.24'

BR. SAND GRAVEL - SILT	799.24'
RUN#1 REC. 29" 3PCS. & FRAG. GRAY SANDSTONE MIN./FT. 4-4-3	796.24'
RUN#2 REC. 12" 3PCS. & FRAG. GRAY SANDSTONE MIN./FT. 5-4-2	793.74'
RUN#3 REC. 57" 23PCS. & FRAG. GRAY SANDSTONE MIN./FT. 6-5-5-4-4	788.74'
RUN#4 REC. 54" 20PCS. & FRAG. GRAY SANDSTONE MIN./FT. 5-4-4-3	783.74'
RUN#5 REC. 48" 10PCS. & FRAG. SLATE - TR. COAL MIN./FT. 6-6-17-10-7	778.74'
RUN#6 REC. 60" 15PCS. & FRAG. GRAY SHALE MIN./FT. 7-8-6-6	773.74'
RUN#7 REC. 60" 15PCS. & FRAG. GRAY SHALE MIN./FT. 7-7-10-6-6	768.74'
RUN#8 REC. 60" 15PCS. & FRAG. GRAY SANDSTONE MIN./FT. 7-10-10-10	763.74'

B-1
CONTINUED

RUN#9 REC. 60" 17PCS. & FRAG. GR. SANDSTONE MIN./FT. 7.5-5-5-5	758.74'
RUN#10 REC. 60" 18PCS. & FRAG. GR. SANDSTONE & SHALE MIN./FT. 5-5-5-6-6	753.74'
RUN#11 REC. 30" 8PCS. & FRAG. GRAY SHALE MIN./FT. 10-8-15	750.81'
RUN#12 REC. 48" 7PCS. & FRAG. 54" 4" TO 54" 4" COAL & SLATE 56" 8" TO 60" 4" F/SANDSTONE MIN./FT. 15-14-14-15	745.91'
RUN#13 REC. 58" 7PCS. & FRAG. F/SANDSTONE MIN./FT. 7-7-13-11-11	740.91'
RUN#14 REC. 59" 10PCS. & FRAG. F/SANDSTONE MIN./FT. 6-5-3-5-5	735.91'
RUN#15 REC. 60" 17PCS. & FRAG. F/SANDSTONE MIN./FT. 8-5-7-5-6	730.91'
RUN#16 REC. 56" 14PCS. & FRAG. F/SANDSTONE MIN./FT. 8-10-10-9	725.91'

NOTE: LOST DRILL WATER AT 8' ROCK WAS FRACTURED & BROKEN

B-2
805.19'

SILT - SAND LITTLE GRAVEL	799.61'
RUN#1 REC. 38" 14PCS. & FRAG. 57" 7" WEATHERED GRAY BR. SANDSTONE - FT. 10-4" SANDSTONE W/ QUARTZ MIN./FT. 6-12-12-12	796.86'
RUN#2 REC. 56" 14PCS. & FRAG. SANDSTONE W/ QUARTZ MIN./FT. 10-10-10-12	788.86'
RUN#3 REC. 58" 13PCS. & FRAG. SANDSTONE W/ QUARTZ MIN./FT. 13-12-14-12	784.86'
RUN#4 REC. 60" 9PCS. & FRAG. SANDSTONE W/ QUARTZ MIN./FT. 12-11-15-15	779.86'
RUN#5 REC. 46" 12PIECES SANDSTONE W/ QUARTZ MIN./FT. 15-15-15-16	774.86'
RUN#6 REC. 44" 4PCS. & FRAG. 30" 4" BR. SANDSTONE W/ QUARTZ 38" 5" 4" COAL MIN./FT. 6-10-14-10-9	769.86'
RUN#7 REC. 55" 11PCS. & FRAG. 35" 4" 38" 4" COAL 38" 4" 4" SHALE MIN./FT. 8-10-10-9-9	764.86'
RUN#8 REC. 60" 14PCS. & FRAG. 43" 4" 43" SANDY SHALE MIN./FT. 8-7-7-8	759.86'
RUN#9 REC. 60" 16PCS. & FRAG. 27" SANDSTONE MIN./FT. 10-11-11-11	754.86'
RUN#10 REC. 60" 14PCS. & FRAG. F/SANDSTONE MIN./FT. 15-17-18-20	749.86'
RUN#11 REC. 59" 14PCS. & FRAG. 15" SANDSTONE MIN./FT. 13-18-19-18	744.86'
RUN#12 REC. 59" 11PCS. & FRAG. F/SANDSTONE MIN./FT. 17-16-5-5	739.86'
RUN#13 REC. 58" 16PCS. & FRAG. 65" 6" 4" SANDSTONE 66" 4" 70" 4" SANDY SHALE MIN./FT. 5-5-6-5-5	734.86'
RUN#14 REC. 60" 17PCS. & FRAG. 10" 5" 72" 4" SANDY SHALE 10" 5" 72" 4" COAL 10" 5" 72" 4" SHALE MIN./FT. 6-6-4-4-5	729.86'

NOTE: LOST DRILL WATER AT 10'

B-2
CONTINUED

RUN#15 REC. 60" 15PCS. & FRAG. SHALE MIN./FT. 6-6-5-5-6	724.86'
RUN#16 REC. 57" 21PCS. & FRAG. SHALE MIN./FT. 7-9-10-10-10	719.86'
RUN#17 REC. 60" 18PCS. & FRAG. SHALE MIN./FT. 10-9-7-7	714.86'
RUN#18 REC. 60" 15PCS. & FRAG. SANDY SHALE MIN./FT. 7-9-9-8-9	709.86'
RUN#19 REC. 58" 12PCS. & FRAG. SANDY SHALE MIN./FT. 12-15-15-9-8	704.86'
RUN#20 REC. 42" 16PCS. & FRAG. SANDY SHALE MIN./FT. 12-12-12-12	699.86'
RUN#21 REC. 48" 4PCS. & FRAG. F/SANDSTONE MIN./FT. 8-12-15-11	694.86'
RUN#22 REC. 43" 9PCS. & FRAG. F/SANDSTONE MIN./FT. 11-5-8-8-5	689.86'

NOTE: LOST DRILL WATER AT 10'

B-3
770.99'

801L	753.99'
RUN#1 REC. 106" 30PCS. & FRAG. MED. GRAIN SANDSTONE - SOME VERTICAL FRACTURES MIN./FT. 3-3-4-5-4-2-4-2-2	744.99'
RUN#2 REC. 112" 26PCS. & FRAG. 26" TO 33" M/GRAIN SANDSTONE - SOME VERTICAL FRACTURES NOT SO BROKEN MIN./FT. 3-4-3-4-5-4-2-3-4	734.99'
RUN#3 REC. 120" 26PCS. & FRAG. 36" TO 46" M/GRAIN SANDSTONE - OCC. VERTICAL FRACTURES NOT SO BROKEN MIN./FT. 3-2-2-3-4-3-3-3-3	724.99'
RUN#4 REC. 117" 46" TO 50" GRAY BROKEN SHALE 50" TO 52" COAL 52" TO 56" GRAY BROKEN SHALE MIN./FT. 2-2-3-2-2-3-3-3-4-3	714.99'

NOTE: LOST DRILL WATER AT 18" LITTLE RETURN AT 176" LOST ALL WATER AT 22"

B-3
CONTINUED

RUN#5 REC. 60" 15PCS. & FRAG. VERY BROKEN & CRUSHED SHALE MIN./FT. 4-3-6-12	709.99'
RUN#6 REC. 112" 23PCS. & FRAG. CRUSHED SHALE MIN./FT. 4-5-5-7-6-7-7-8-7-8	699.99'
RUN#7 REC. 98" 23PCS. & FRAG. 71" TO 74" 4" CRUSHED SHALE 74" TO 76" BROKEN & CRUSHED SHALE - HARD & SOFT LAYERS 78" TO 79" VOID 79" TO 80" BROKEN & CRUSHED SHALE SEE BELOW * MIN./FT. 4-3-3-4-3-3-2-2-3-2-2-3-2-2	679.99'
RUN#8 REC. 64" 21PCS. & FRAG. CRUSHED SHALE MIN./FT. 3-4-2-2-2-3-3-4-5	679.99'
RUN#9 REC. 95" 19PCS. & FRAG. 91" TO 94" SANDY SHALE 94" TO 96" WOOD 96" TO 101" SANDY SHALE MIN./FT. 4-3-3-3-4-3-3-3-3	669.99'
RUN#10 REC. 58" 15PCS. & FRAG. SANDY SHALE MIN./FT. 2-3-4-3-3	664.99'

NOTE: LOST DRILL WATER AT 18" LITTLE RETURN AT 176" LOST ALL WATER AT 22"

B-4
717.12'

SOIL	700.62'
RUN#1 REC. 120" 36PCS. & FRAG. SOLID SANDSTONE MIN./FT. 4-3-3-4-3-3-3-4-3-3	690.62'
RUN#2 REC. 54" 14PCS. & FRAG. BROKEN SANDSTONE MIN./FT. 3-3-3-3-3	685.62'
RUN#3 REC. 103" 23PCS. & FRAG. 34" 2" TO 37" 2" COAL 37" 2" TO 38" 2" SLATE 38" 2" TO 41" 4" SANDSTONE MIN./FT. 4-4-3-2-2-4-3-4-4-2	675.62'
RUN#4 REC. 120" 11PCS. & FRAG. 44" TO 48" M/GRAIN SANDSTONE 48" TO 51" 6" F/GRAIN SANDSTONE VERTICAL BREAKS MIN./FT. 4-3-3-3-4-4-3-4-4	665.62'
RUN#5 REC. 118" 16PCS. & FRAG. F/GRAIN SANDSTONE VERTICAL BREAKS MIN./FT. 3-3-4-4-3-3-3-3-3	655.62'

NOTE: LOST DRILL WATER AT 213"

B-4
CONTINUED

RUN#6 REC. 93" 32PCS. & FRAG. 66" TO 66" F/GRAIN SANDSTONE - BROKEN 66" TO 67" COAL 67" TO 74" BROKEN SHALE MIN./FT. 4-3-3-4-3-2-4-4-3-5	645.62'
RUN#7 REC. 118" 42PCS. & FRAG. VERY BROKEN SHALE MIN./FT. 3-5-5-6-5-6-5-5-6-6	635.62'
RUN#8 REC. 119" 35PCS. & FRAG. VERY BROKEN SHALE MIN./FT. 4-4-5-5-6-6-5-5-6-6	625.62'
RUN#9 REC. 92" 28PCS. & FRAG. 91" TO 97" BROKEN SHALE 97" TO 98" 4" VOID 98" 4" TO 102" BROKEN SHALE MIN./FT. 3-3-4-3-3-4-1-4-2-5	615.62'
RUN#10 REC. 63" 29PCS. & FRAG. SOME CRUSHED SHALE 101" TO 103" 6" BROKEN SHALE 103" TO 104" 8" VOID 104" TO 108" 6" BROKEN SHALE 108" TO 108" 6" VOID 108" 6" TO 107" 6" SHALE 107" TO 107" 6" VOID 107" TO 111" 6" VERY BROKEN & FRAC. SHALE MIN./FT. 4-2-4-3-2-2-1-2-4	605.62'

NOTE: LOST DRILL WATER AT 213"

CONTINUED NEXT COLUMN

CONTINUED NEXT COLUMN

CONTINUED NEXT COLUMN

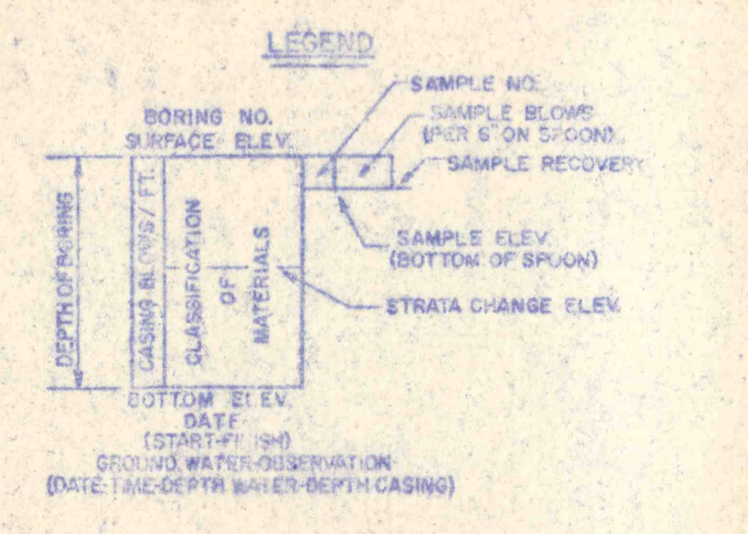
CONTINUED NEXT COLUMN

CONTINUED NEXT COLUMN

CONTINUED NEXT COLUMN

CONTINUED NEXT COLUMN

CONTINUED NEXT COLUMN



- LEGEND**
- ABBREVIATIONS**
- F FINE
 - M MEDIUM
 - C COARSE
 - TR TRACE
 - MISC. MISCELLANEOUS
- LEGEND**
- 300 LB. HAMMER WITH * DROP USED TO DRIVE * CASING.
 - 140 LB. HAMMER WITH * DROP USED TO DRIVE * SPOON.
 - SOIL SAMPLES DELIVERED TO ROBERT WILLIAMS.
 - DRILLER: D. KITCHEN - C. ATTANASIO HELPER: T. LORUSSO - T. BECKMUTH
 - VISUAL SOIL & ROCK CLASSIFICATION DONE BY DRILLER IN FIELD.
- * NOTE: NO CASING BLOWS, USED 4" FOLLOW STEEP AUGERS.

TEST BORINGS
AT
PITTSSTON TOWNSHIP
LUZERNE COUNTY, PENNA.

COMMONWEALTH OF PENNSYLVANIA
DEPT. OF ENVIRONMENTAL RESOURCES
3RD. & REILY STREETS
HARRISBURG, PENNSYLVANIA, 17120

GILES DRILLING CORPORATION
BORING CONTRACTOR

SCALE: AS SHOWN
SECTION 1" = 8'
DATE 11-11-75

DRAWN BY L.E.S.
CHECKED BY F.B.
NO. 75-33