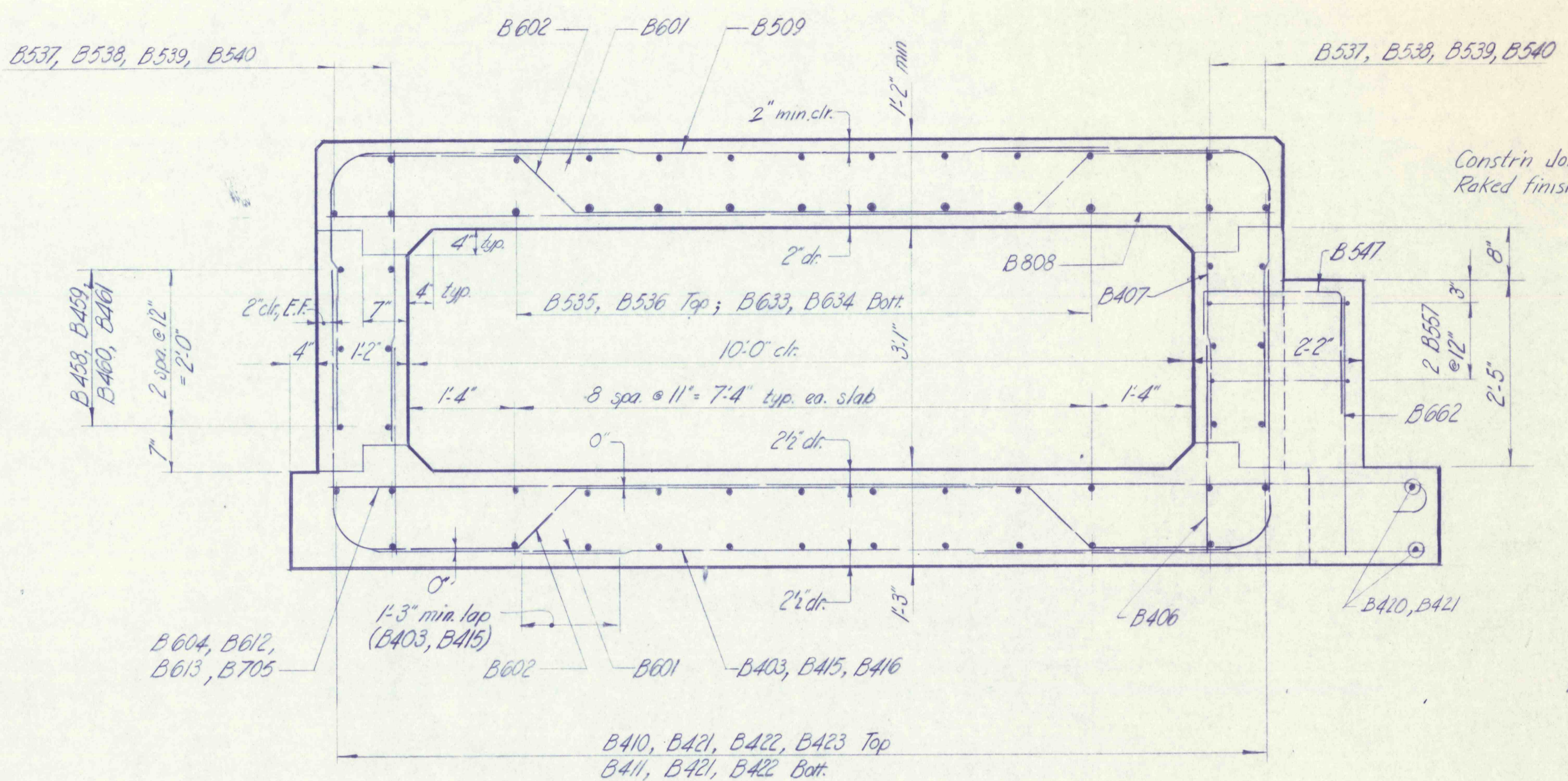
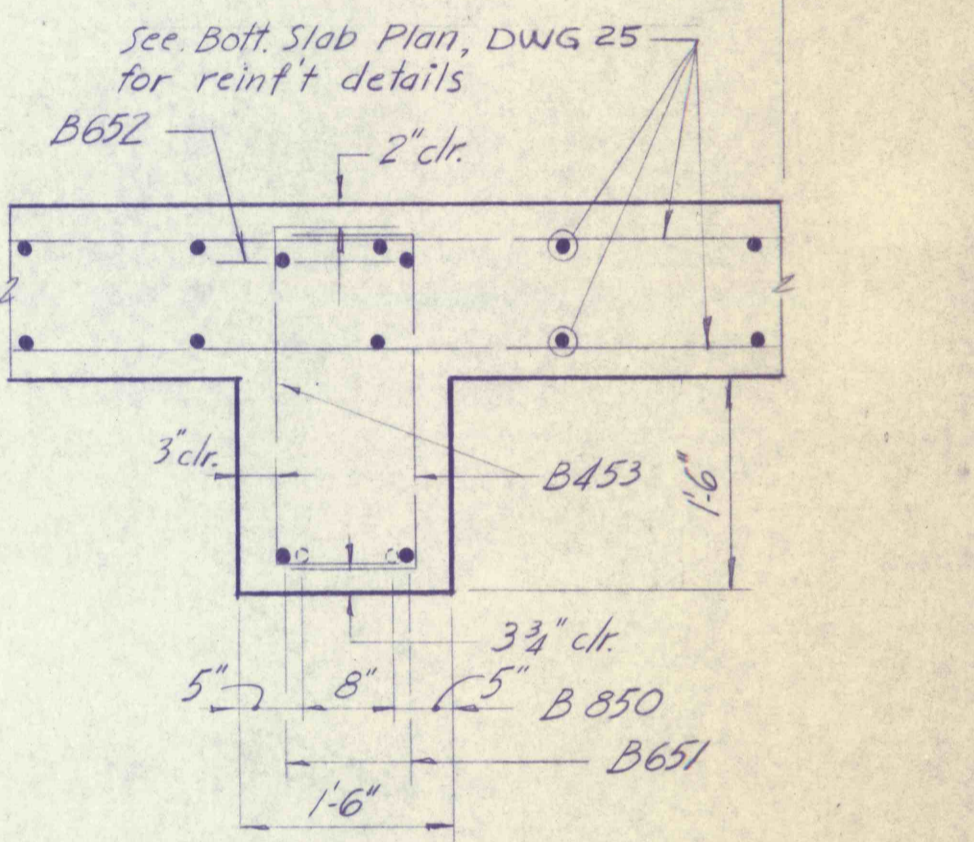
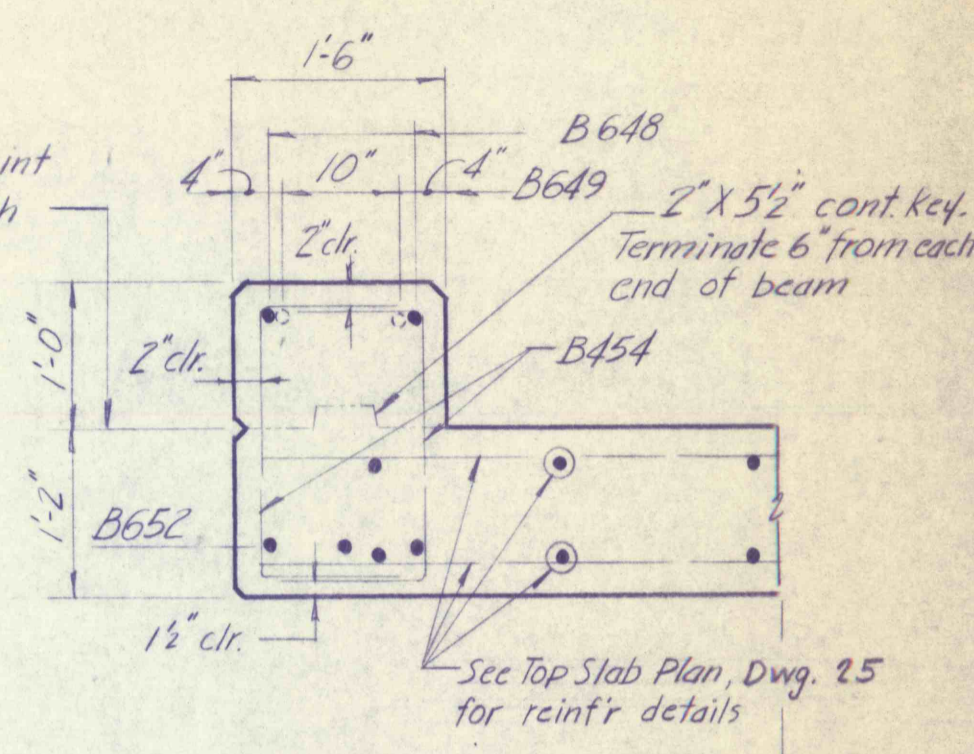


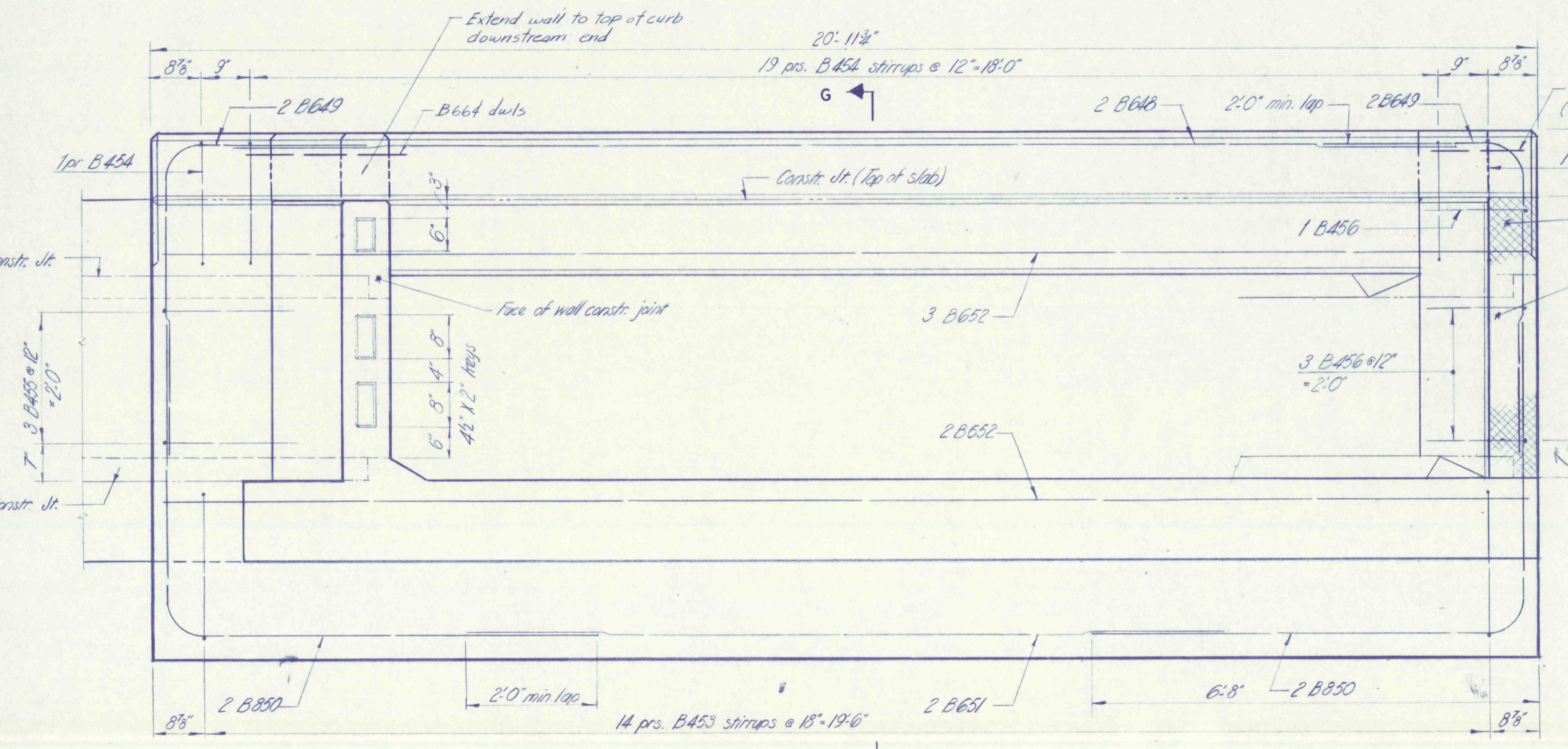
SECT. "A-A"
Scale: 3/4" = 1'-0"



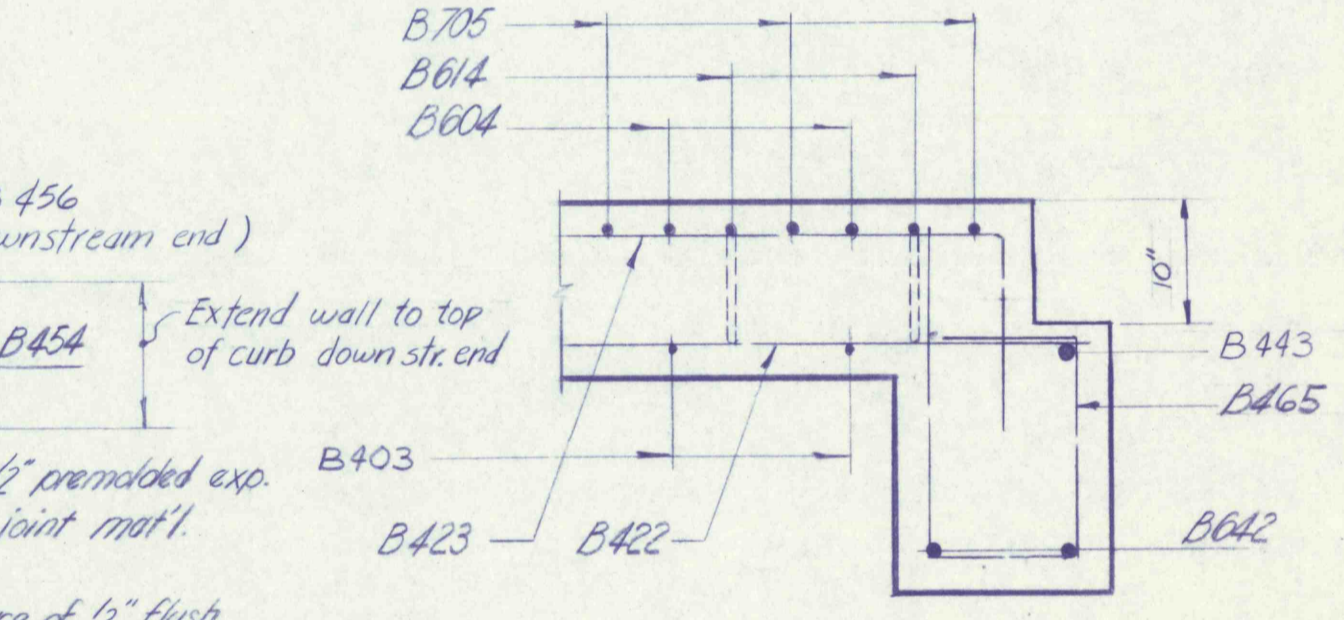
TYPICAL CULVERT SECTION
Scale: 3/4" = 1'-0"



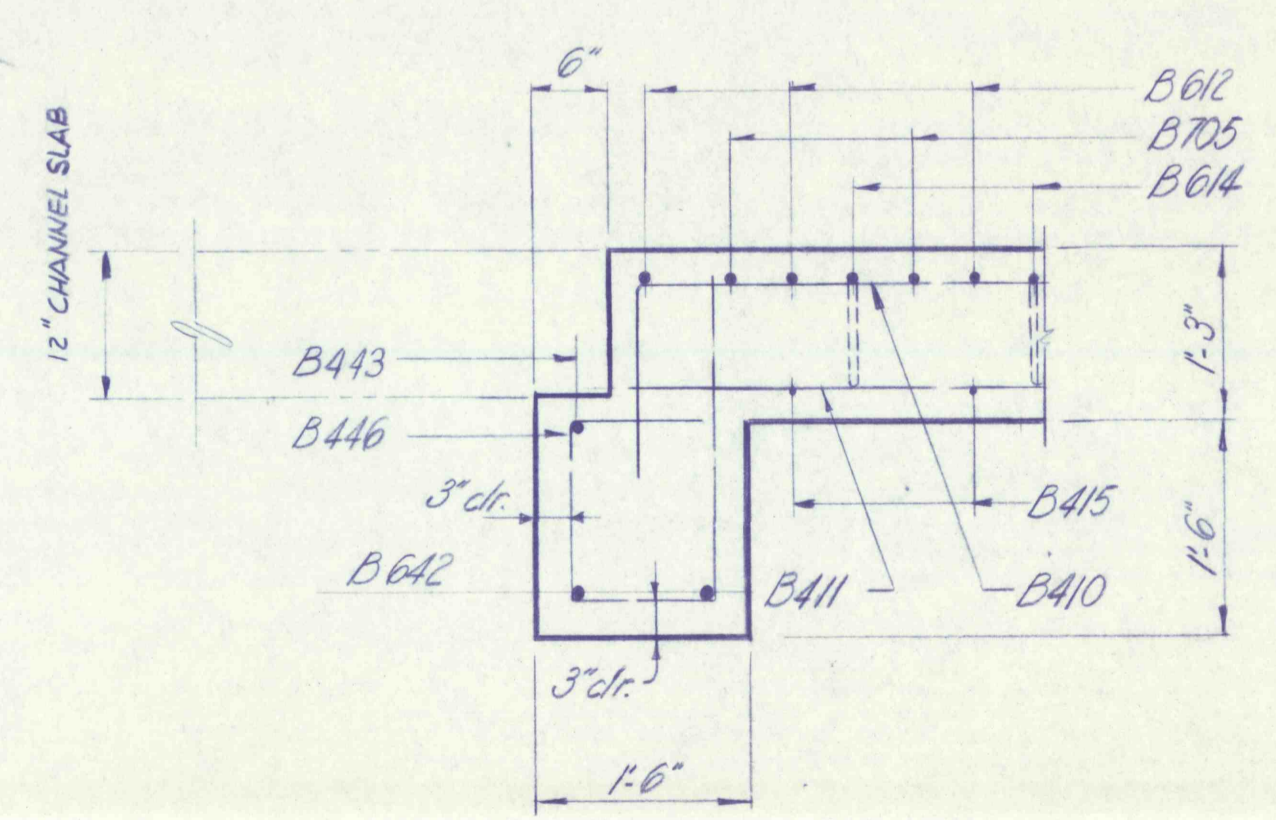
SECT. "G-G"
Scale: 3/4" = 1'-0"



TYPICAL END FRAME ELEVATION
Scale: 3/4" = 1'-0"



SECT. "C-C"
Scale: 3/4" = 1'-0"



SECT. "D-D"
Scale: 3/4" = 1'-0"

FOR SECTION: A-A, SEE DWG: 27
A₂-A₂ 27
A₃-A₃ 27
A₄-A₄ 27
G-G 26

NO.	DATE	REVISION	APPR.
SUBMITTED			
PROFESSIONAL			
APPROVED			
CHIEF - DIVISION OF MINE RECLAMATION			
APPROVED			
DIRECTOR - BUREAU OF DESIGN			

FINAL

SJM, JUL 28 1977

COMMONWEALTH OF PENNSYLVANIA
DEPARTMENT OF ENVIRONMENTAL RESOURCES
OFFICE OF RESOURCES MANAGEMENT

CONTRACT NO. SL 181-3-101.1
SUGAR NOTCH RUN AMD
ABATEMENT PROJECT
WARRIOR CREEK AND
SOLOMON CREEK WATERSHEDS

GEO - Technical Services
CONSULTING ENGINEERS & GEOLOGISTS
851 So. 19th St. HARRISBURG, PENNA.

BOX CULVERT
STA. 69 + 57.90

DRAWN BY	DATE	DRAWING NO.
JLT	MAY 1977	26 of 40
CHECKED BY	SCALE	
SJM	As Shown	