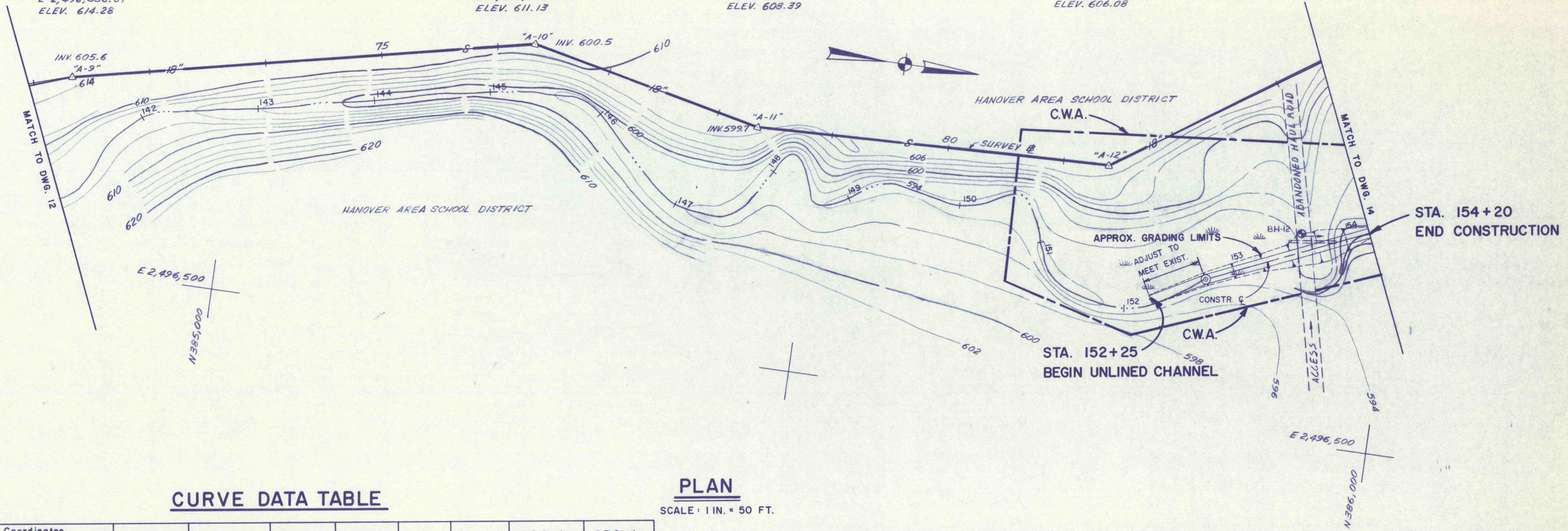


SURVEY # "A-9"
 P.I. STA. 72+33.35
 Δ = 185°30'54"
 CHISELED CROSS ON MANHOLE RIM
 N 384, 855.86
 E 2,496,336.67
 ELEV. 614.28

SURVEY # "A-10"
 P.I. STA. 76+32.01
 Δ = 204°33'40"
 CHISELED CROSS ON MANHOLE RIM
 N 385, 245.54
 E 2,496,252.56
 ELEV. 611.13

SURVEY # "A-11"
 P.I. STA. 78+35.33
 Δ = 165°44'11"
 CHISELED CROSS ON MANHOLE RIM
 N 385, 444.14
 E 2,496,296.16
 ELEV. 608.39

SURVEY # "A-12"
 P.I. STA. 81+39.00
 Δ = 147°55'57"
 CHISELED CROSS ON MANHOLE RIM
 N 385, 747.64
 E 2,496,286.18
 ELEV. 606.08

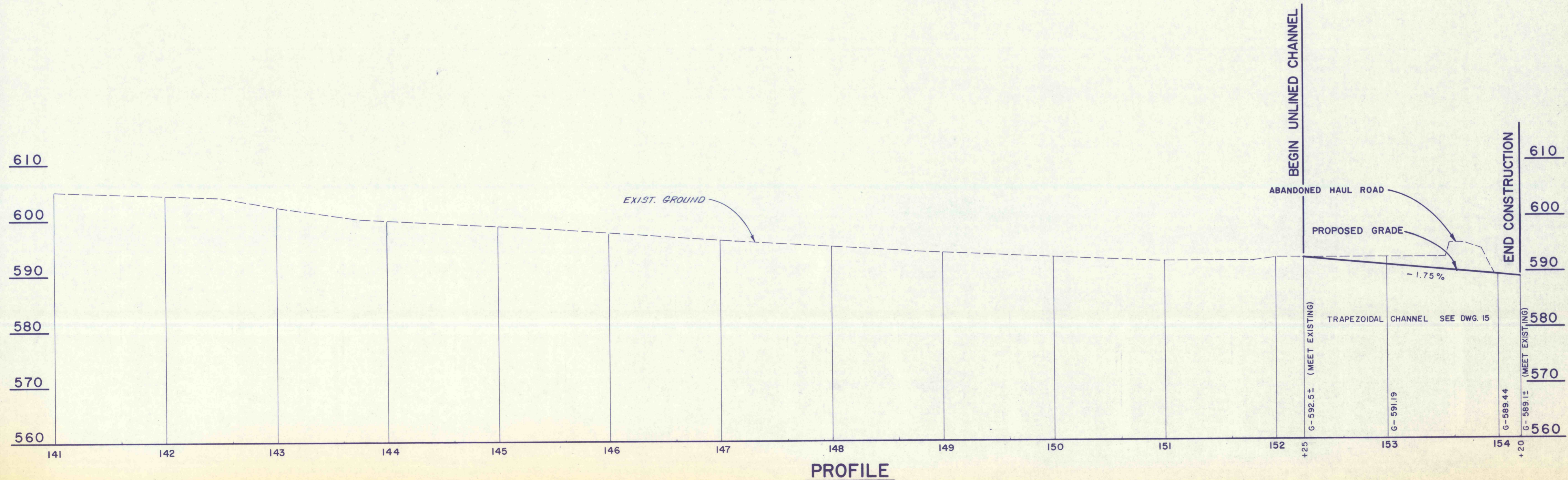


CURVE DATA TABLE

Curve No.	P. I. Coordinates		P. I. Station	Δ	D	R	T	L	P.C. Station	P.T. Station
	North	East								
1	385,843.05	2,496,371.18	152+75.00							BEGIN CONTROLLED CHANNEL ALIGNMENT
2	385,975.87	2,496,312.99	154+20.00							END CONTROLLED CHANNEL ALIGNMENT

PLAN

SCALE: 1 IN. = 50 FT.



PROFILE

FOR CROSS SECTIONS SEE DWG. 40

NO.	DATE	REVISION	APPR.

FINAL

S.J.M. JUL 28 1977

COMMONWEALTH OF PENNSYLVANIA
 DEPARTMENT OF ENVIRONMENTAL RESOURCES
 OFFICE OF RESOURCES MANAGEMENT
 CONTRACT NO. SL 181-3-101.1
 SUGAR NOTCH RUN AMD
 ABATEMENT PROJECT
 WARRIOR CREEK AND
 SOLOMON CREEK WATERSHEDS

GEO - Technical Services
 CONSULTING ENGINEERS & GEOLOGISTS
 851 So. 19th St. HARRISBURG, PENNA.

PLAN & PROFILE
 STA. 141+00 TO STA. 154+20

DRAWN BY WEH	DATE MAY 1977	DRAWING NO. 13 of 40
CHECKED BY SJM	SCALE As Shown	