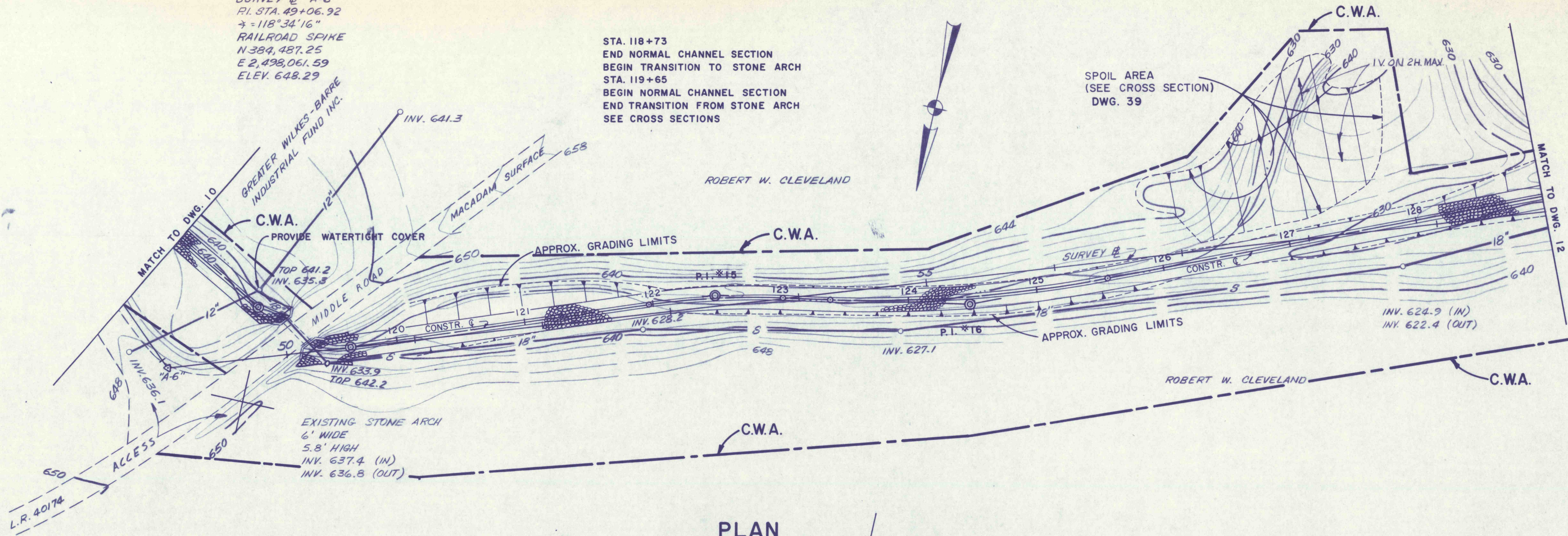


SURVEY @ "A-6"  
 P.I. STA. 49+06.92  
 $\gamma = 118^{\circ}34'16"$   
 RAILROAD SPIKE  
 N 389,487.25  
 E 2,498,061.59  
 ELEV. 648.29

STA. 118+73  
 END NORMAL CHANNEL SECTION  
 BEGIN TRANSITION TO STONE ARCH  
 STA. 119+65  
 BEGIN NORMAL CHANNEL SECTION  
 END TRANSITION FROM STONE ARCH  
 SEE CROSS SECTIONS

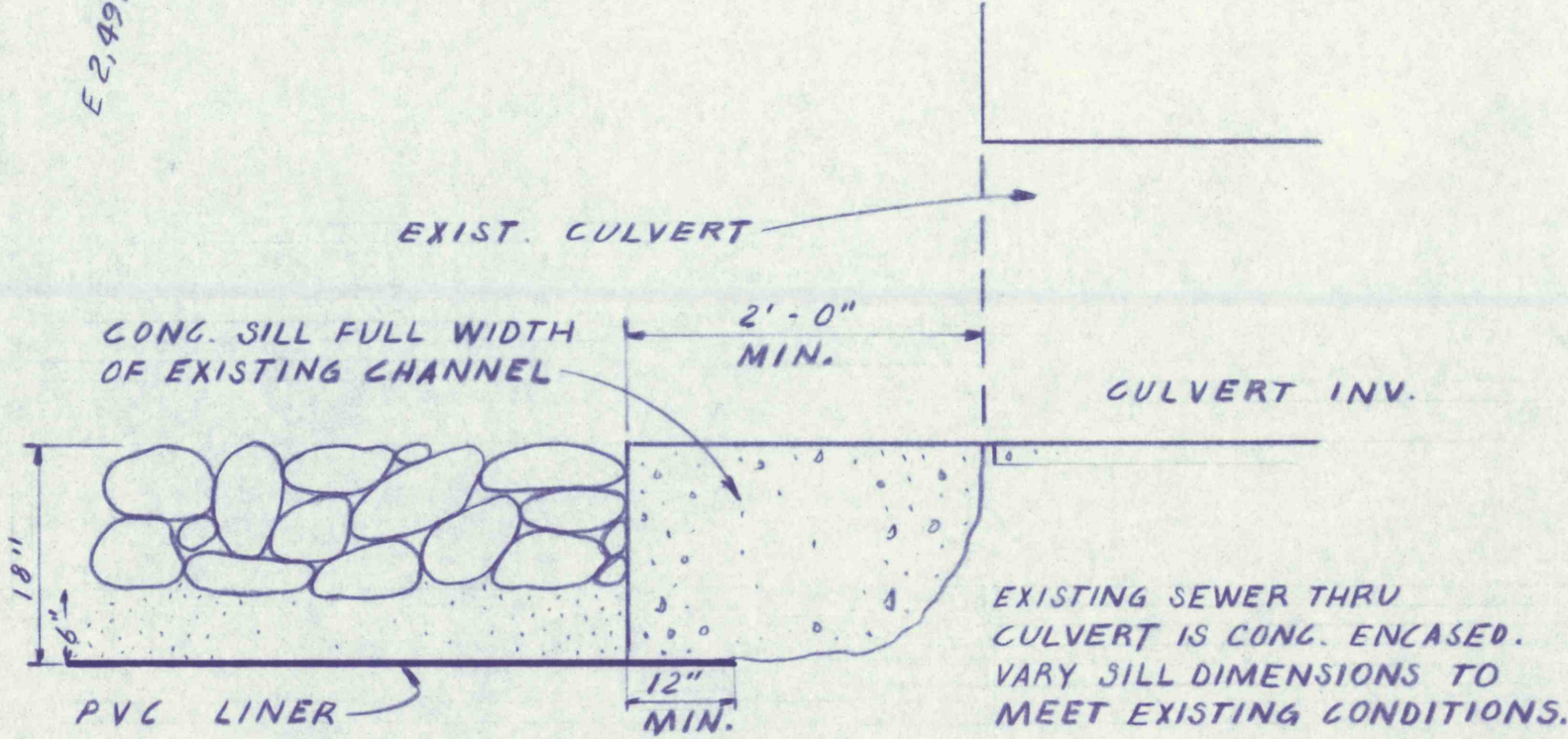


**PLAN**

SCALE: 1 IN. = 50 FT.

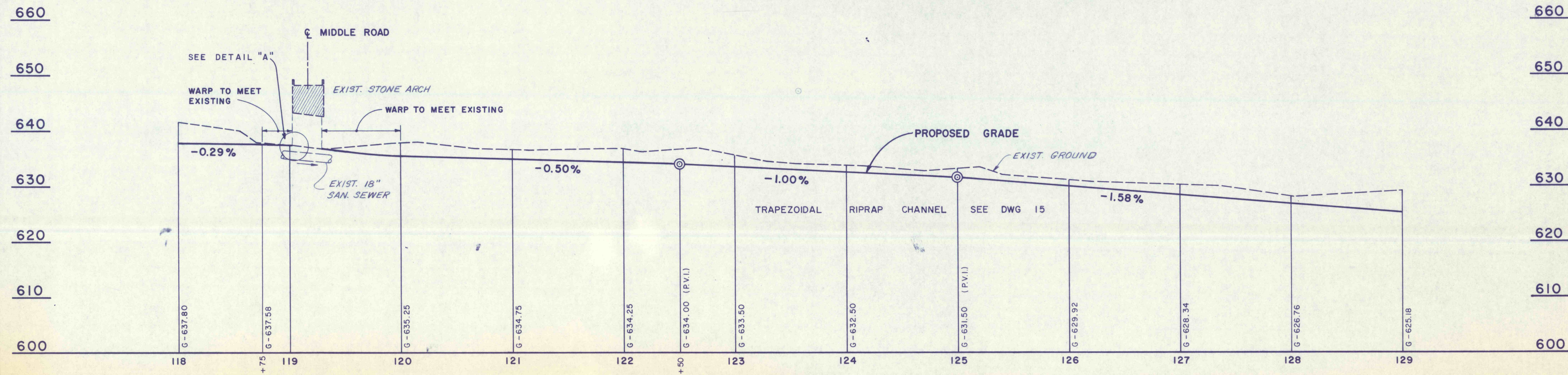
**CURVE DATA TABLE**

Curve No.	P.I. Coordinates		P.I. Station	$\Delta$	D	R	T	L	P.C. Station	P.T. Station
	North	East								
—	384,425.65	2,498,003.59	118+80.68	END CONTROLLED CHANNEL ALIGNMENT						
—	384,440.02	2,497,926.53	119+64.39	BEGIN CONTROLLED CHANNEL ALIGNMENT						
15	384,338.25	2,497,660.50	122+49.22	9°57'19" RT.	9°32'57"	600.00'	52.26'	104.25'	121+96.96	123+01.21
16	384,300.28	2,497,464.78	124+48.32	12°23'18" LT.	5°43'46"	1000.00'	108.53'	216.22'	123+39.79	125+56.01



**DETAIL "A"**

TYPICAL INLET AND OUTLET OF EXISTING CULVERT  
 NO SCALE



**PROFILE**

FOR CROSS SECTIONS SEE DWG 38-39

NO.	DATE	REVISION	APPR.
SUBMITTED			
PROFESSIONAL			
APPROVED			
CHIEF - DIVISION OF MINE RECLAMATION			
APPROVED			
DIRECTOR - BUREAU OF DESIGN			

**FINAL**

SJM. JUL 28 1977

COMMONWEALTH OF PENNSYLVANIA  
 DEPARTMENT OF ENVIRONMENTAL RESOURCES  
 OFFICE OF RESOURCES MANAGEMENT

CONTRACT NO. SL 181-3-101.1

SUGAR NOTCH RUN AMD  
 ABATEMENT PROJECT  
 WARRIOR CREEK AND  
 SOLOMON CREEK WATERSHEDS

GEO - Technical Services  
 CONSULTING ENGINEERS & GEOLOGISTS  
 851 So. 19th St. HARRISBURG, PENNA.

**PLAN & PROFILE**  
 STA. 118+00 TO STA. 129+00

DRAWN BY WEH	DATE SEPT. 1976	DRAWING NO. 11 of 40
CHECKED BY SJM	SCALE As Shown	