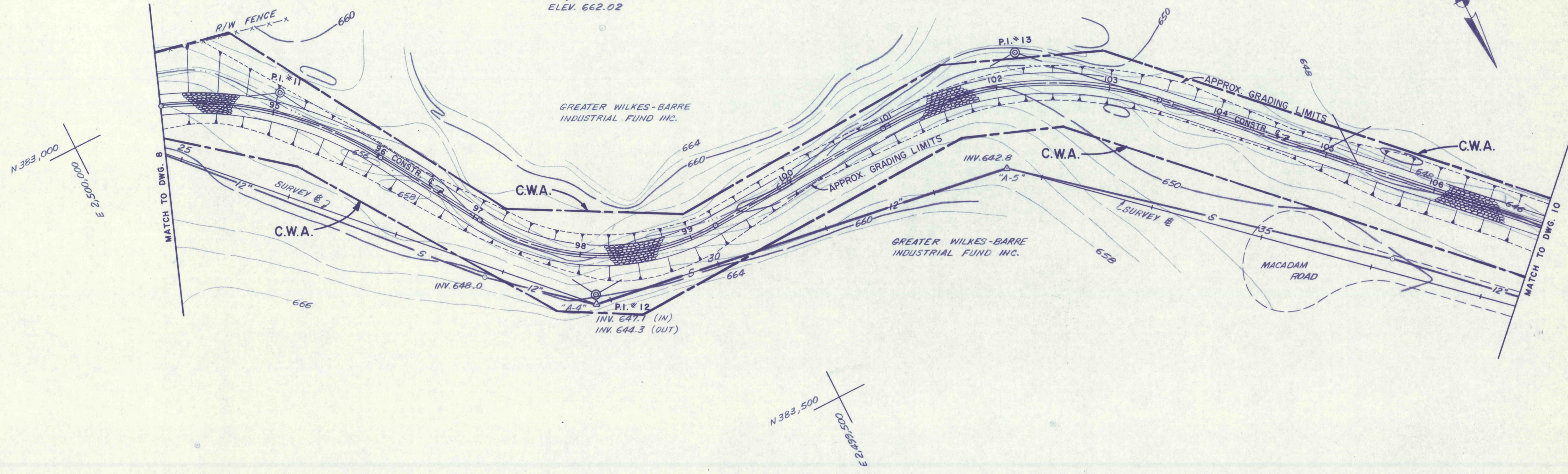


N 383,000

SURVEY # "A-4"
 P.I. STA. 28+87.36
 * = 142°29'02"
 CHISELED CROSS ON MANHOLE RIM
 N 383,330.16
 E 2,499,652.86
 ELEV. 662.02

SURVEY # "A-5"
 P.I. STA. 32+67.82
 * = 213°32'10"
 CHISELED CROSS ON MANHOLE RIM
 N 383,387.18
 E 2,499,276.70
 ELEV. 657.51



PLAN

SCALE: 1 IN. = 50 FT.

CURVE DATA TABLE

Curve No.	P.I. Coordinates		P.I. Station	Δ	D	R	T	L	P.C. Station	P.T. Station
	North	East								
11	383,037.94	2,499,816.09	95+05.90	38°38'20" RT.	19°05'55"	300.00'	105.17'	202.31'	94+00.73	96+03.04
12	383,322.00	2,499,649.00	98+27.43	62°30'19" LT.	28°38'52"	200.00'	121.38'	218.18'	97+06.05	99+24.23
13	383,300.00	2,499,225.00	102+27.42	48°04'35" RT.	19°05'55"	300.00'	133.81'	251.73'	100+93.61	103+45.34

FOR CROSS SECTIONS SEE DWG. 37

NO.	DATE	REVISION	APPR.
SUBMITTED			
PROFESSIONAL			
APPROVED			
CHIEF - DIVISION OF MINE RECLAMATION			
APPROVED			
DIRECTOR - BUREAU OF DESIGN			

FINAL

S.J.M. JUL 20 1977

COMMONWEALTH OF PENNSYLVANIA
 DEPARTMENT OF ENVIRONMENTAL RESOURCES
 OFFICE OF RESOURCES MANAGEMENT

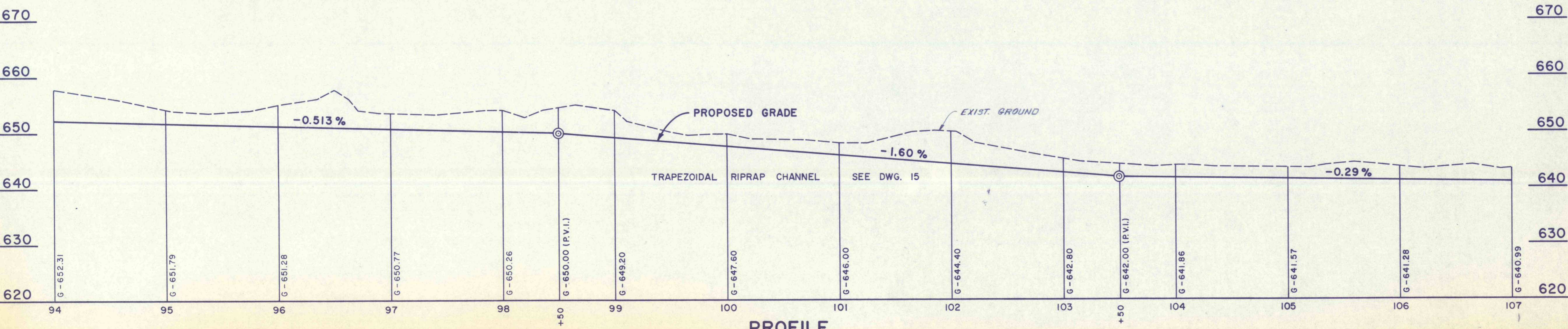
CONTRACT NO. SL 181-3-101.1

SUGAR NOTCH RUN AMD
 ABATEMENT PROJECT
 WARRIOR CREEK AND
 SOLOMON CREEK WATERSHEDS

GEO - Technical Services
 CONSULTING ENGINEERS & GEOLOGISTS
 851 So. 19th St. HARRISBURG, PENNA.

PLAN & PROFILE
STA. 94+00 TO STA. 107+00

DRAWN BY WEH	DATE SEPT. 1976	DRAWING NO. 9 of 40
CHECKED BY SJM	SCALE As Shown	



PROFILE