

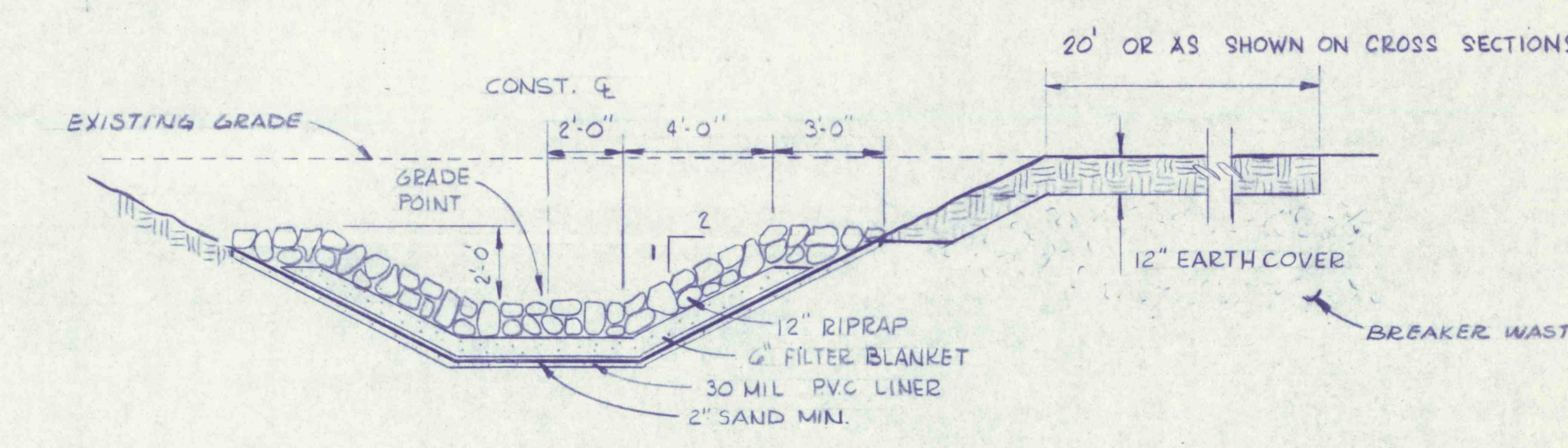
STA. 89+62± TO STA. 91+50±
RELOCATE EXISTING R/W FENCE
AS SHOWN ON PLAN

SURVEY # "A-3"
P.I. STA. 24+20.86
Δ = 208°18'58"
CHISELED CROSS ON MANHOLE RIM
N 382,993.82
E 2,499,976.12
ELEV. 659.98

STA. 84+25
INSTALL NEW MANHOLE ON EXISTING SEWER
USE CASTINGS FROM EXISTING MANHOLE AT STA. 82+89
TOP ELEV. 663.5
STA. 82+89 TO STA. 84+25
REMOVE EXISTING MANHOLE & SEWER

STA. 82+25
END CHANNEL TRANSITION
BEGIN NORMAL SECTION

STA. 90+65 TO STA. 91+05
ENCASE SEWER PIPE IN CONCRETE
UNDER SIDE INLET
6" MIN. COVER



PLAN
SCALE: 1 IN. = 50 FT.

BREAKER WASTE TREATMENT
NOT TO SCALE

CURVE DATA TABLE

Curve No.	P.I. Coordinates		P.I. Station	Δ	D	R	T	L	P.C. Station	P.T. Station
	North	East								
10	382,609.34	2,500,938.71	83+05.57	13°42'19" RT.	4°58'56"	1150.00'	138.20'	275.08'	81+67.37	84+42.45

FOR CROSS SECTIONS SEE DWG 36

NO.	DATE	REVISION	APPR.
SUBMITTED			
PROFESSIONAL			
APPROVED			
CHIEF - DIVISION OF MINE RECLAMATION			
APPROVED			
DIRECTOR - BUREAU OF DESIGN			

FINAL
S.J.M. JUL 28 1977

COMMONWEALTH OF PENNSYLVANIA
DEPARTMENT OF ENVIRONMENTAL RESOURCES
OFFICE OF RESOURCES MANAGEMENT

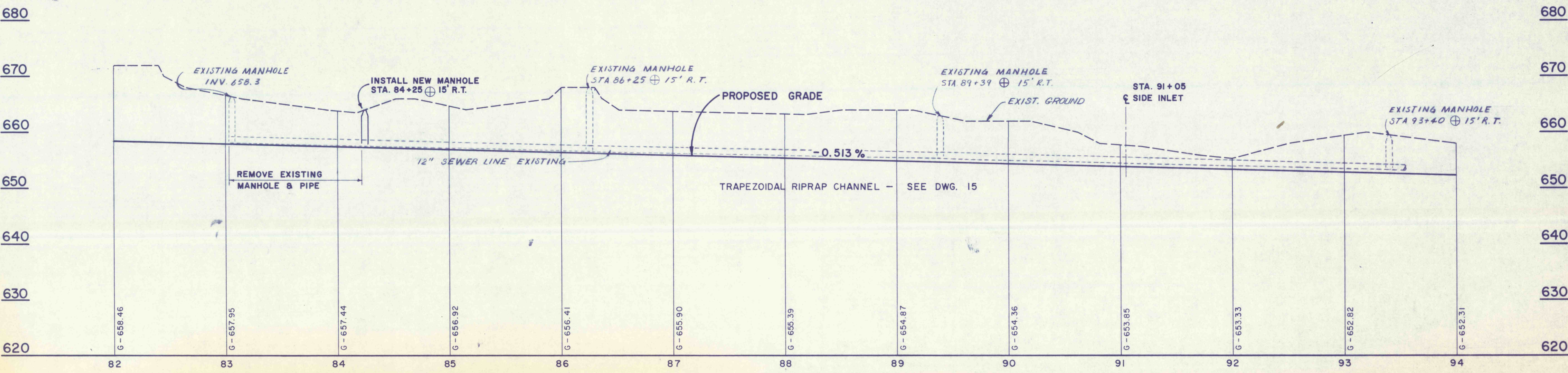
CONTRACT NO. SL 181-3-101.1

SUGAR NOTCH RUN AMD
ABATEMENT PROJECT
WARRIOR CREEK AND
SOLOMON CREEK WATERSHEDS

GEO - Technical Services
CONSULTING ENGINEERS & GEOLOGISTS
851 So. 19th St. HARRISBURG, PENNA.

PLAN & PROFILE
STA. 82+00 TO STA. 94+00

DRAWN BY WEH	DATE SEPT. 1976	DRAWING NO. 8 of 40
CHECKED BY SJM	SCALE As Shown	



PROFILE