

STA. 68+85 TO STA. 68+95  
TRANSITION FROM 8' WIDE CONC.  
CHANNEL TO 10' WIDE CONC. CHANNEL

STA. 67+10± TO STA. 68+10±  
REMOVE EXISTING R/W FENCE  
STA. 67+10±  
BEGIN NEW FENCE AT 8.0' LT. OF  
CONSTR. C, CROSS CHANNEL AT  
PARAPET OF BOX CULVERT AND  
CONNECT TO EXISTING FENCE AT  
20'± RT. OF STA. 69+00±.

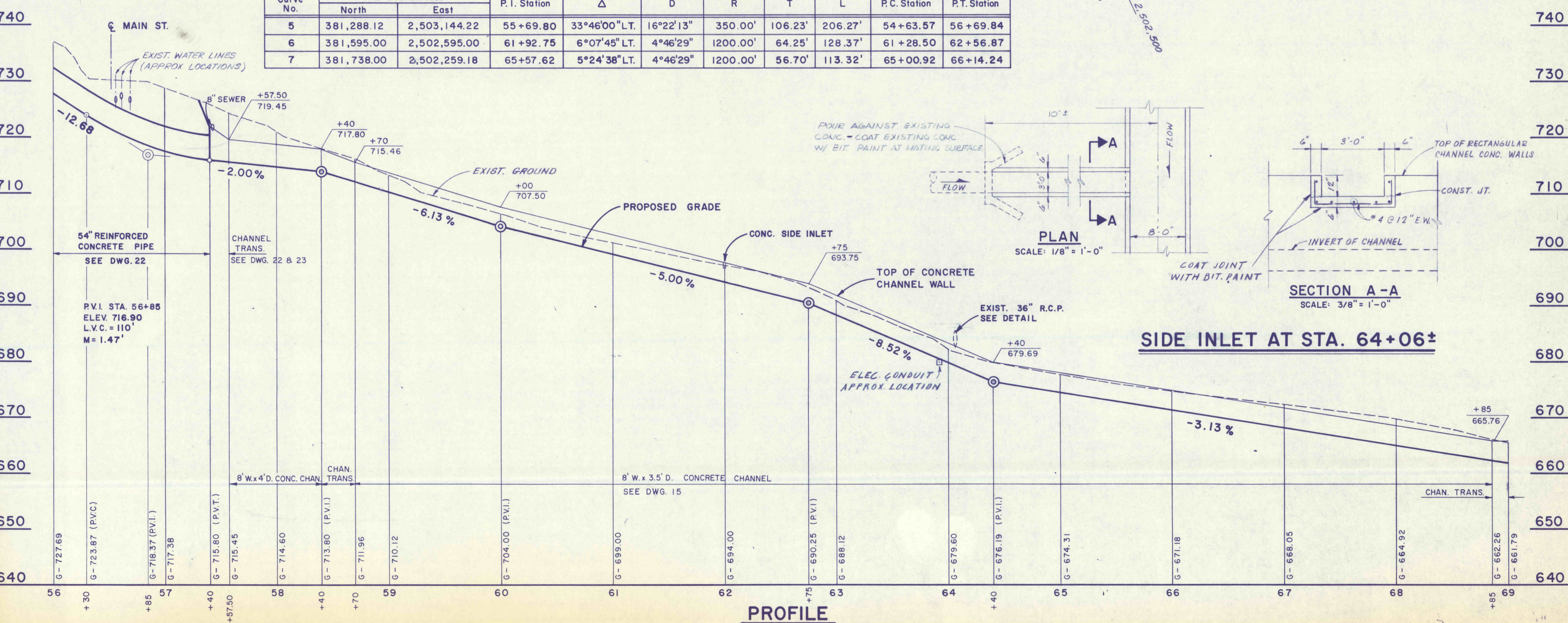
STA. 68+10 TO STA. 69+00  
RAISE OR LOWER EXISTING FENCE AS  
REQUIRED BY GRADING.

**PLAN**  
SCALE: 1 IN. = 50 FT.

LOCATIONS OF EXISTING UTILITIES ARE  
APPROXIMATE. EXACT LOCATIONS ARE TO  
BE DETERMINED IN THE FIELD BY THE  
CONTRACTOR.

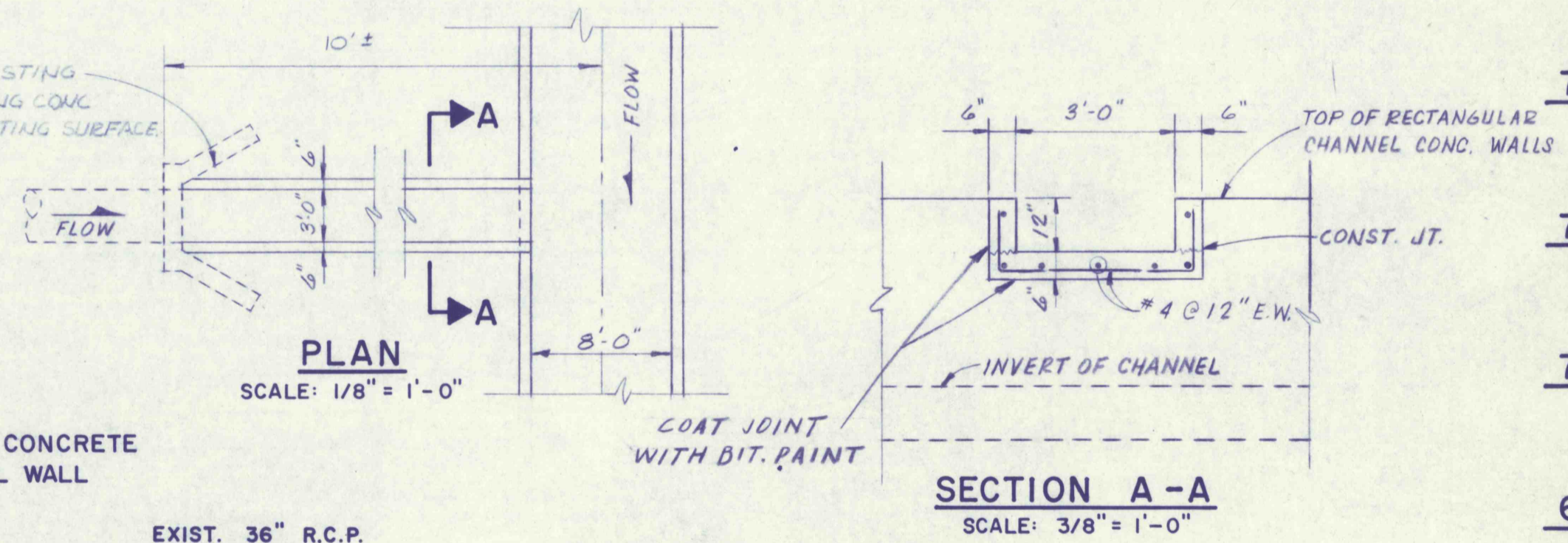
**CURVE DATA TABLE**

Curve No.	P.I. Coordinates		P.I. Station	Δ	D	R	T	L	P.C. Station	P.T. Station
	North	East								
5	381,288.12	2,503,144.22	55+69.80	33°46'00" LT.	16°22'13"	350.00'	106.23'	206.27'	54+63.57	56+69.84
6	381,595.00	2,502,595.00	61+92.75	6°07'45" LT.	4°46'29"	1200.00'	64.25'	128.37'	61+28.50	62+56.87
7	381,738.00	2,502,259.18	65+57.62	5°24'38" LT.	4°46'29"	1200.00'	56.70'	113.32'	65+00.92	66+14.24



**PROFILE**

FOR CROSS SECTION  
SEE DWG. 33-34



**SIDE INLET AT STA. 64+06±**

NO.	DATE	REVISION

**FINAL**  
S.J.M. JUL 28 1977

COMMONWEALTH OF PENNSYLVANIA  
DEPARTMENT OF ENVIRONMENTAL RESOURCES  
OFFICE OF RESOURCES MANAGEMENT  
CONTRACT NO. SL 181-3-101.1  
SUGAR NOTCH RUN AMD  
ABATEMENT PROJECT  
WARRIOR CREEK AND  
SOLOMON CREEK WATERSHEDS

GEO - Technical Services  
CONSULTING ENGINEERS & GEOLOGISTS  
851 So. 19th St. HARRISBURG, PENNA.

**PLAN & PROFILE**  
**STA. 56+00 TO STA. 69+00**

DRAWN BY WEH	DATE SEPT. 1976	DRAWING NO. 6 of 40
CHECKED BY SJM	SCALE As Shown	