

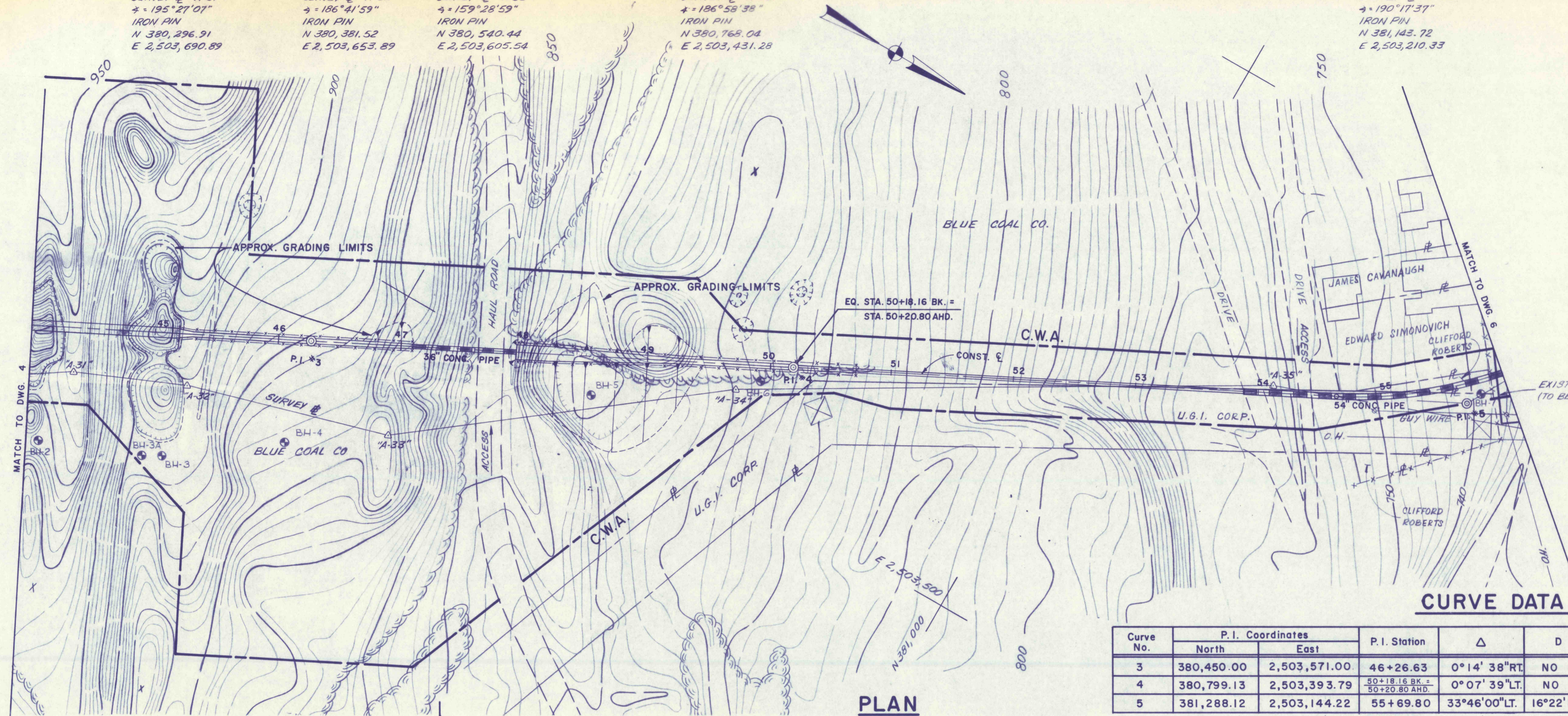
SURVEY "A-31"
 ± = 195° 27' 01"
 IRON PIN
 N 380, 296.91
 E 2, 503, 690.89

SURVEY "A-32"
 ± = 186° 41' 59"
 IRON PIN
 N 380, 381.52
 E 2, 503, 653.89

SURVEY "A-33"
 ± = 159° 28' 59"
 IRON PIN
 N 380, 540.44
 E 2, 503, 605.54

SURVEY "A-34"
 ± = 186° 58' 38"
 IRON PIN
 N 380, 768.04
 E 2, 503, 431.28

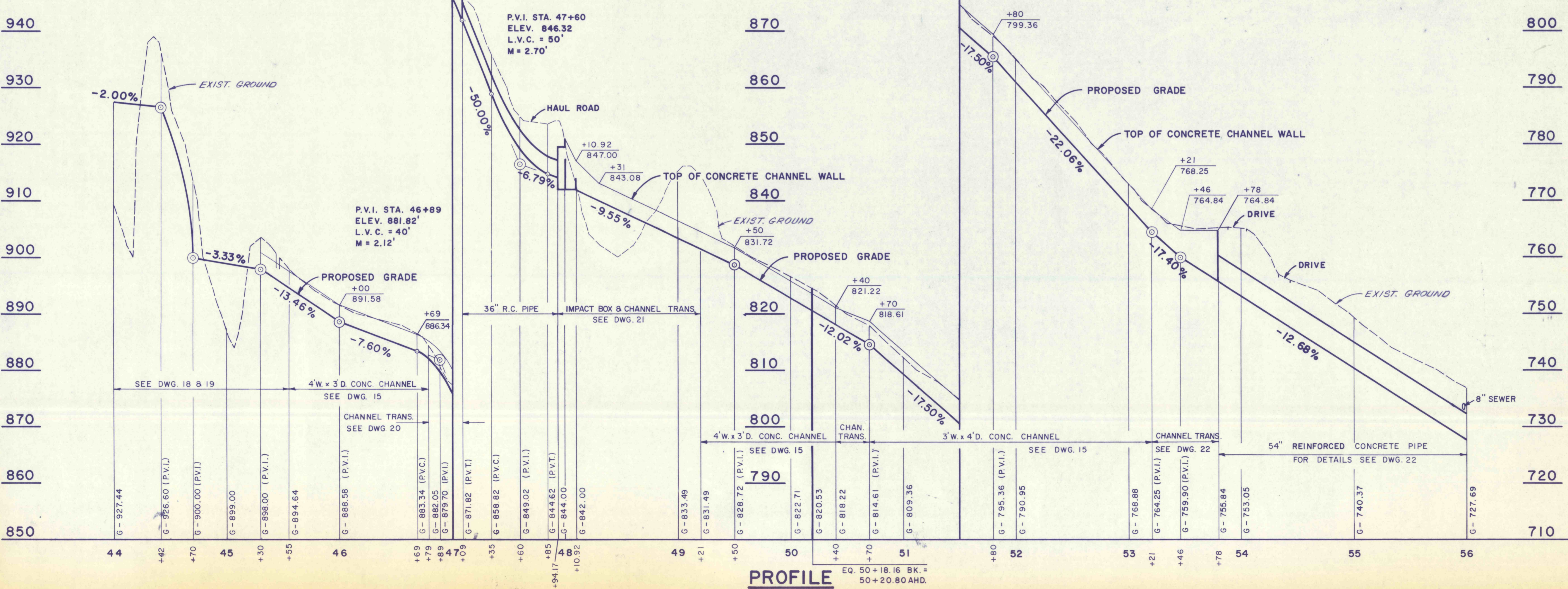
SURVEY "A-35"
 ± = 190° 17' 37"
 IRON PIN
 N 381, 143.72
 E 2, 503, 210.33



STA. 45+20 TO STA. 47+10 LT. & RT.
 STA. 47+95 TO STA. 50+72 LT. & RT.
 INSTALL NEW CHAIN LINK FENCE
 CLOSE FENCE ACROSS CHANNEL AT 47+10, 47+95 & 50+72

CURVE DATA TABLE

Curve No.	P.I. Coordinates		P.I. Station	Δ	D	R	T	L	P.C. Station	P.T. Station
	North	East								
3	380,450.00	2,503,571.00	46+26.63	0°14'38"RT.	NO CURVE					
4	380,799.13	2,503,393.79	50+18.16 BK = 50+20.80 AHD.	0°07'39"LT.	NO CURVE					
5	381,288.12	2,503,144.22	55+69.80	33°46'00"LT.	16°22'13"	350.00'	106.23'	206.26'	54+63.57	56+69.84



FOR CROSS SECTIONS SEE DWG. 32-33

NO.	DATE	REVISION	APPR.

FINAL
 S.J.M. JUL 28 1977

COMMONWEALTH OF PENNSYLVANIA
 DEPARTMENT OF ENVIRONMENTAL RESOURCES
 OFFICE OF RESOURCES MANAGEMENT
 CONTRACT NO. SL 181-3-101.1
 SUGAR NOTCH RUN AMD
 ABATEMENT PROJECT
 WARRIOR CREEK AND
 SOLOMON CREEK WATERSHEDS

GEO - Technical Services
 CONSULTING ENGINEERS & GEOLOGISTS
 851 So. 19th St. HARRISBURG, PENNA.

PLAN & PROFILE
STA. 44+00 TO STA. 56+00

DRAWN BY WEH	DATE SEPT. 1976	DRAWING NO. 5 of 40
CHECKED BY SJM	SCALE As Shown	