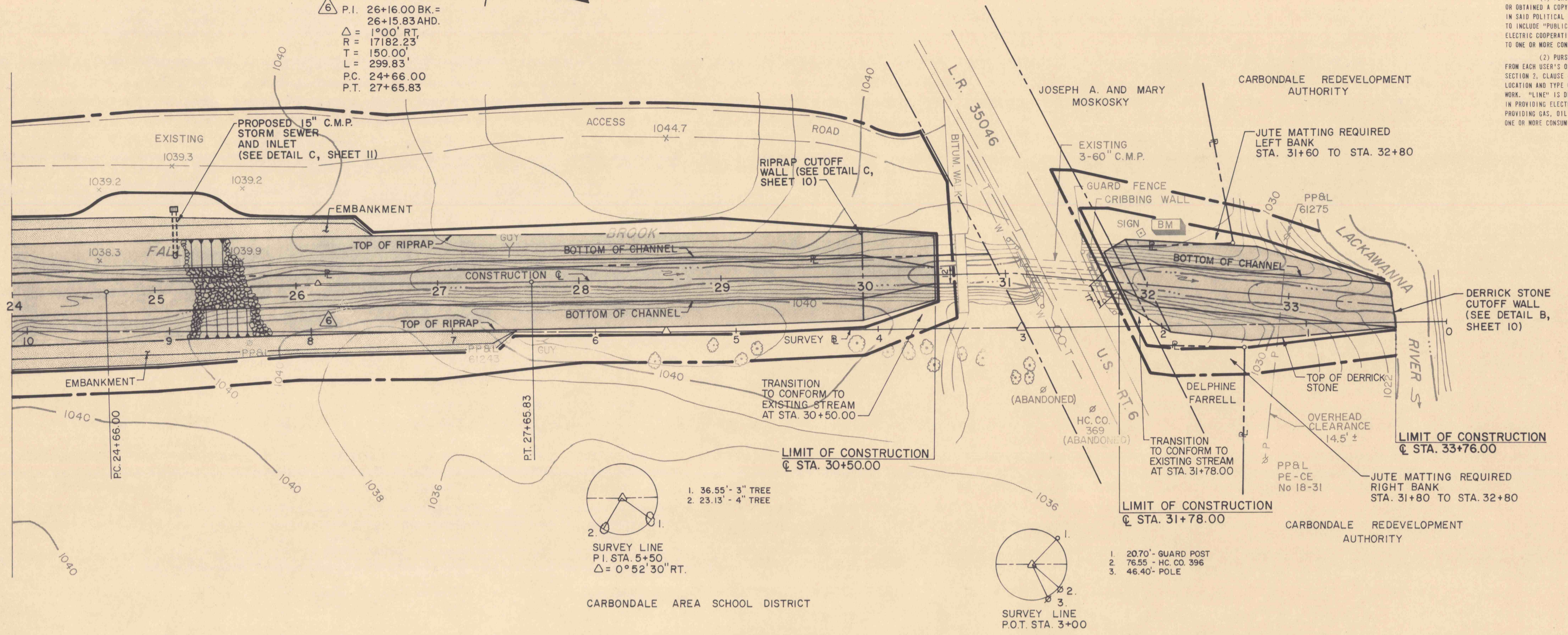
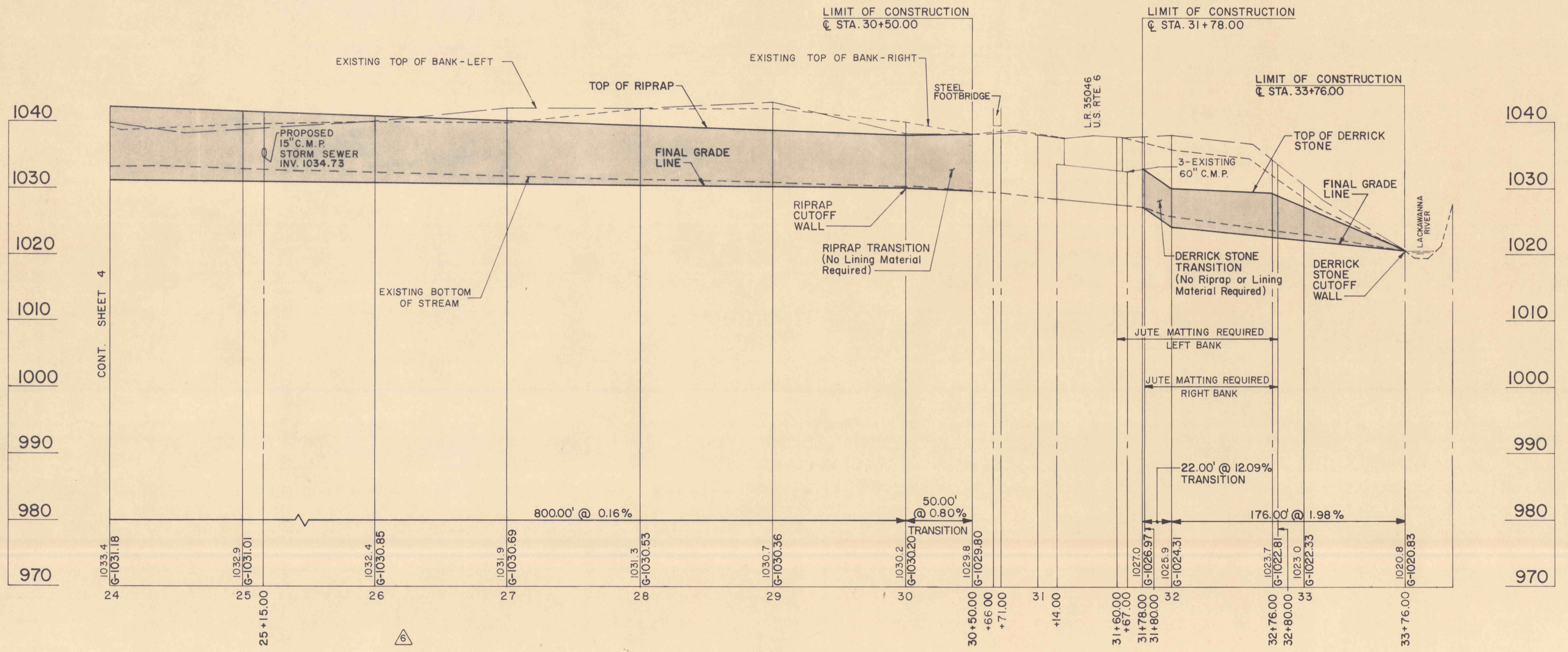


△ P.I. 26+16.00 BK. =
26+15.83 AHD.
Δ = 1°00' RT.
R = 17182.23
T = 150.00'
L = 299.83'
P.C. 24+66.00
P.T. 27+65.83

CONT. SHEET 4



GENERAL PLAN
SCALE: 1" = 50'



LINED STREAM CHANNEL
SCALE: HOR.: 1" = 50'
VERT.: 1" = 10'

NOTICE
GANNETT FLEMING CORDDRY AND CARPENTER, INC. (HEREIN REFERRED TO AS GFCC) HEREBY STATES THAT, PURSUANT TO THE PROVISIONS OF ACT NO. 281 OF DECEMBER 10, 1974, OF THE PENNSYLVANIA LEGISLATURE, IT HAS PERFORMED THE FOLLOWING IN PREPARING THESE DRAWINGS REQUIRING EXCAVATION OR DEMOLITION WORK AT SITES WITHIN THE POLITICAL SUBDIVISION(S) SHOWN ON THE DRAWINGS:
(1) PURSUANT TO SECTION 4, CLAUSE (1) OF SAID ACT, GFCC INSPECTED OR OBTAINED A COPY OF THE LIST OF USERS, AS PRESCRIBED BY SECTION 3, OF SAID ACT, IN SAID POLITICAL SUBDIVISION(S). "USER" IS DEFINED IN SECTION 1 OF SAID ACT TO INCLUDE "PUBLIC UTILITY, MUNICIPAL CORPORATION, MUNICIPALITY, AUTHORITY, RURAL ELECTRIC COOPERATIVE OR OTHER PERSON WHO OR WHICH USES A LINE TO PROVIDE SERVICE TO ONE OR MORE CONSUMERS".
(2) PURSUANT TO SECTION 4, CLAUSE (2) OF SAID ACT, GFCC REQUESTED FROM EACH USER'S OFFICE DESIGNATED ON SUCH LIST THE INFORMATION PRESCRIBED BY SECTION 3, CLAUSE (4) OF SAID ACT, BEING "INFORMATION AS TO THE APPROXIMATE LOCATION AND TYPE OF THE USER'S LINES" AT THE SITES OF EXCAVATION OR DEMOLITION WORK. "LINE" IS DEFINED IN SAID ACT AS MEANING "AN UNDERGROUND CONDUCTOR USED IN PROVIDING ELECTRIC OR COMMUNICATION SERVICE, OR AN UNDERGROUND PIPE USED IN PROVIDING GAS, OIL OR OIL PRODUCT DELIVERY, SEWAGE, WATER OR OTHER SERVICE TO ONE OR MORE CONSUMERS OF SUCH SERVICE".

(3) PURSUANT TO SECTION 4, CLAUSE (3) OF SAID ACT, GFCC HAS SHOWN UPON THESE DRAWINGS "THE APPROXIMATE LOCATION AND TYPE OF EACH LINE, DERIVED PURSUANT TO THE REQUEST MADE AS REQUIRED BY CLAUSE (2)" OF SECTION 4 OF SAID ACT, AND THE USER'S NAMES, OFFICE ADDRESSES AND TELEPHONE NUMBERS, AS SHOWN ON THE LIST DESCRIBED IN PARAGRAPH NO. 1 ABOVE.
AND GFCC DOES NOT MAKE ANY REPRESENTATION, WARRANTY, ASSURANCE OR GUARANTEE THAT THE INFORMATION RECEIVED PURSUANT TO SAID REQUEST AND AS REFLECTED ON THESE DRAWINGS IS CORRECT OR ACCURATE, BUT GFCC IS REFLECTING SAID INFORMATION ON THESE DRAWINGS ONLY DUE TO THE REQUIREMENTS OF THE SAID ACT NO. 281 OF DECEMBER 10, 1974.
GANNETT FLEMING CORDDRY AND CARPENTER, INC.

DATE: JUNE 15, 1977

LEGEND

- EXISTING UTILITY POLE
- W — EXISTING WATER MAIN
- T — EXISTING UNDERGROUND TELEPHONE CONDUIT AND MANHOLE
- P — EXISTING OVERHEAD POWER LINE
- — — — — APPROXIMATE LOCATION OF PROPERTY LINES
- — — — — LIMIT OF GRADING AND REVEGETATION
- — — — — LIMIT OF CONTRACTOR'S WORKING AREA
- C.M.P. CORRUGATED METAL PIPE
- BM PENN DOT BENCH MARK SQUARE CUT IN CONCRETE BASE, GOODYEAR TIRE SIGN. ELEV. 1040.33
- △ INDICATES CONSTRUCTION @ P.I. NUMBER - CURVE DATA SHOWN ON THIS SHEET

- NOTES:
1. THE PROPERTY LINES SHOWN ON THIS DRAWING REFLECT THE ACCURACY OR INACCURACY OF THE DEEDS OF RECORD AND ARE TO BE USED FOR LOCATION PURPOSES ONLY.
 2. CONTOURS ARE BASED ON A FIELD SURVEY DATED OCTOBER, 1976 BY GANNETT FLEMING CORDDRY AND CARPENTER, INC. ENGINEERS.
 3. CONTOUR INTERVAL 2 FEET.

NO	DATE	REVISION	APPR
SUBMITTED			
PROFESSIONAL			
APPROVED			
CHIEF - DIVISION OF MINE RECLAMATION			
APPROVED			
DIRECTOR - BUREAU OF DESIGN			
REGISTERED PROFESSIONAL ENGINEER			
DATE			
COMMONWEALTH OF PENNSYLVANIA			
DEPARTMENT OF ENVIRONMENTAL RESOURCES			
OFFICE OF RESOURCES MANAGEMENT			
CONTRACT NO. SL 139-1-6-101.1			
MINE DRAINAGE POLLUTION ABATEMENT			
FALL BROOK			
LACKAWANNA RIVER WATERSHED			
LACKAWANNA COUNTY			
PENNSYLVANIA			
GANNETT FLEMING CORDDRY AND CARPENTER, INC.			
Consulting Engineers			
P.O. BOX 1963 HARRISBURG, PA			

GENERAL PLAN AND PROFILE

DRAWN BY R.C.L. DATE MAY, 1977 DRAWING NO. 5 of 12
CHECKED BY D.L.B. SCALE SHOWN