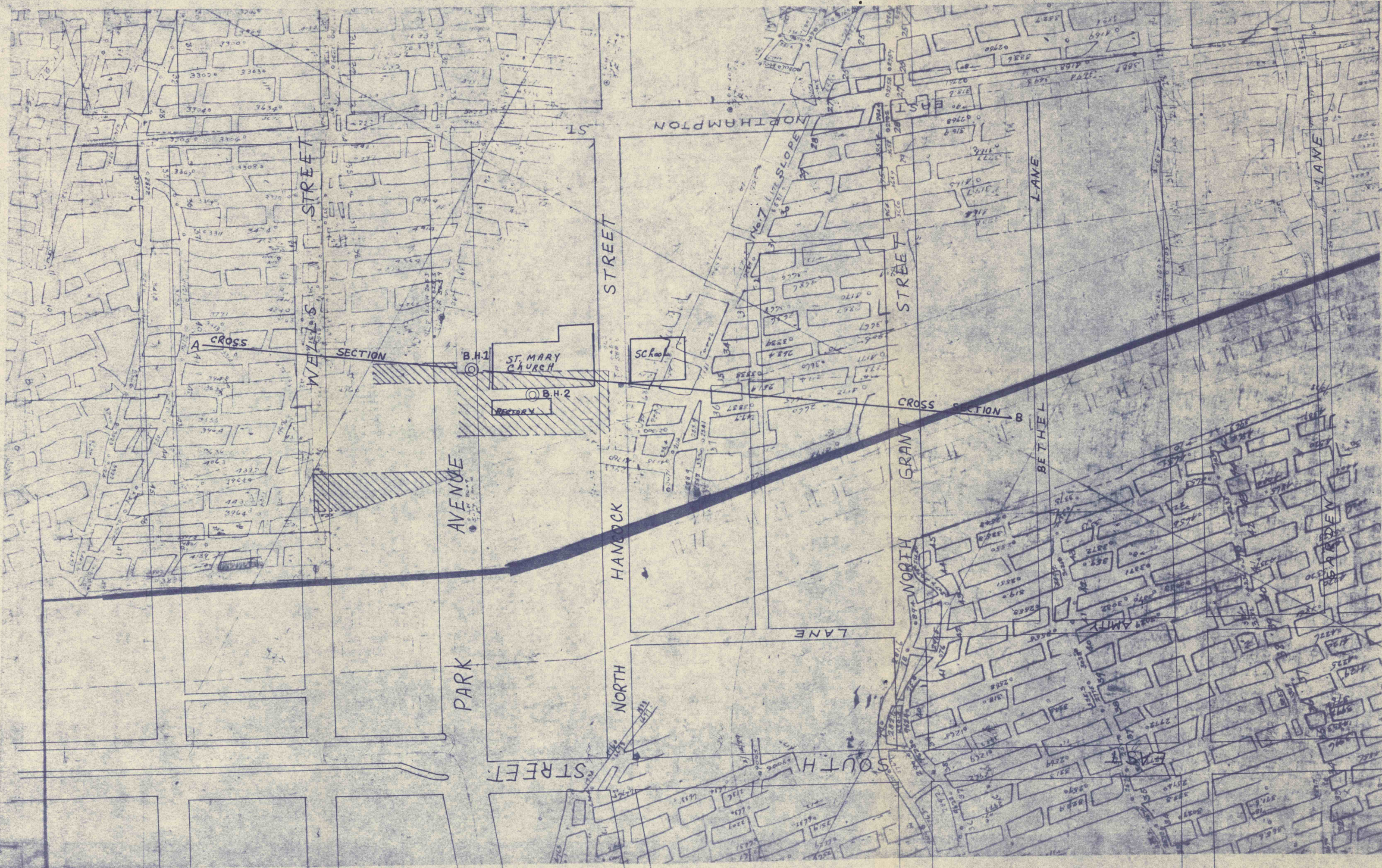
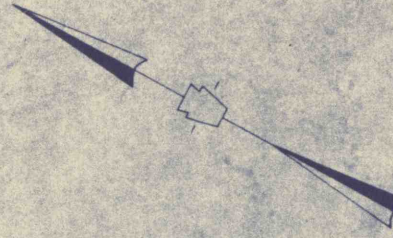


2005, 10/11/11, 10/11/11, 10/11/11



LEGEND :-

© exploratory borehole

SCALE - 1" = 100'

NO.	DATE	REVISION	APPR.

DESIGN ENGINEER
Michael J. Marino
 DISTRICT ENGINEER - ANTHRACITE

APPROVED
V.M. Beal
 DIRECTOR - BUREAU OF RESOURCES PROGRAMMING



(SEALS)
 COMMONWEALTH OF PENNSYLVANIA
 DEPARTMENT OF ENVIRONMENTAL RESOURCES
 OFFICE OF RESOURCES MANAGEMENT

PROJECT NO. **SL- 444**
 TITLE **DRILLING EXPLORATORY BOREHOLES**
NORTH HANCOCK ST. & PARK AVE,
WILKES-BARRE CITY, LUZERNE CO. PA
 SHEET DESCRIPTION
HOLLENBACK NO. 2 COLLIERY
KIDNEY VEIN

CHECKED BY	DATE	DRAWN BY	NO.

SL 444-13