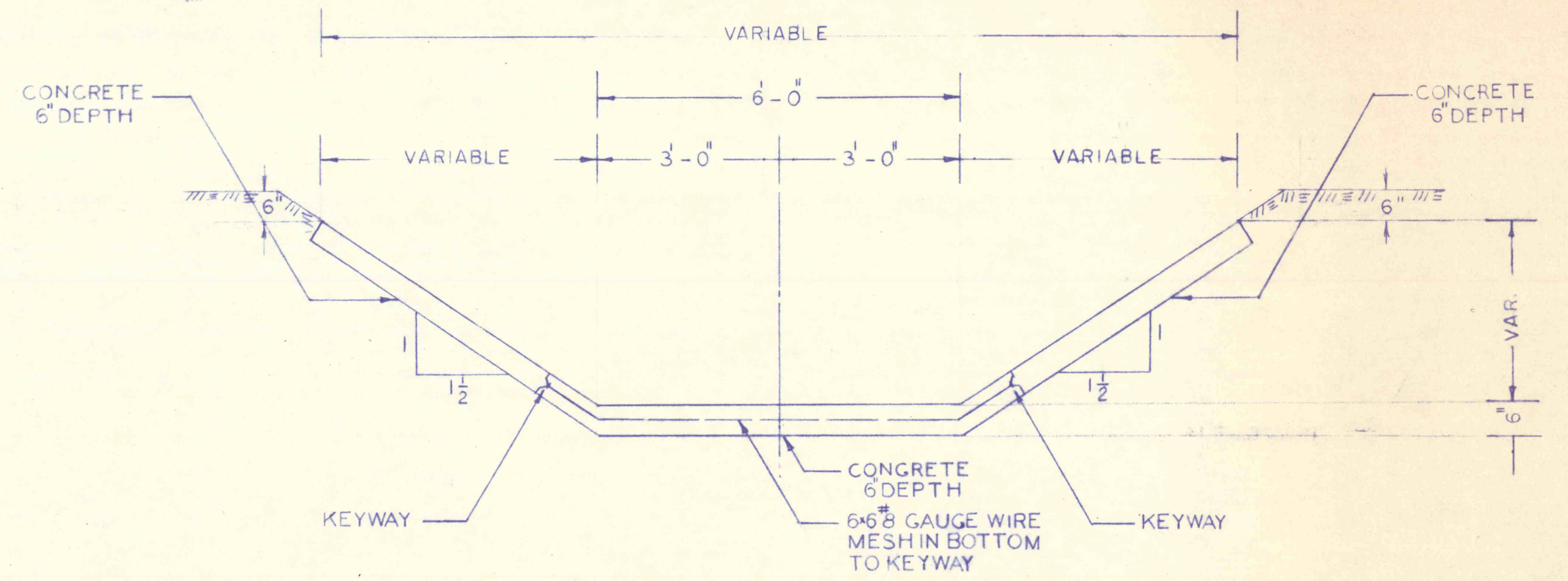
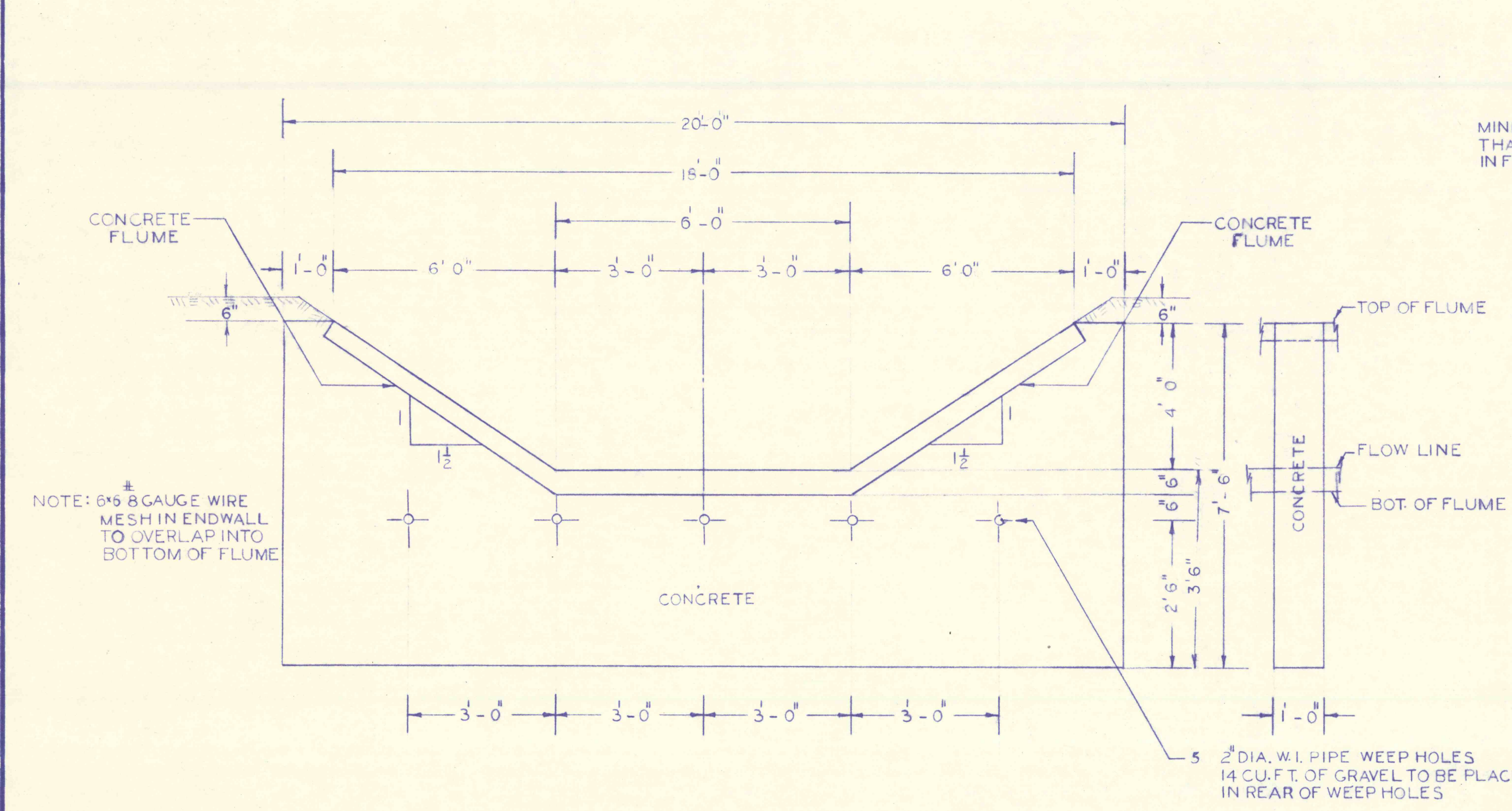


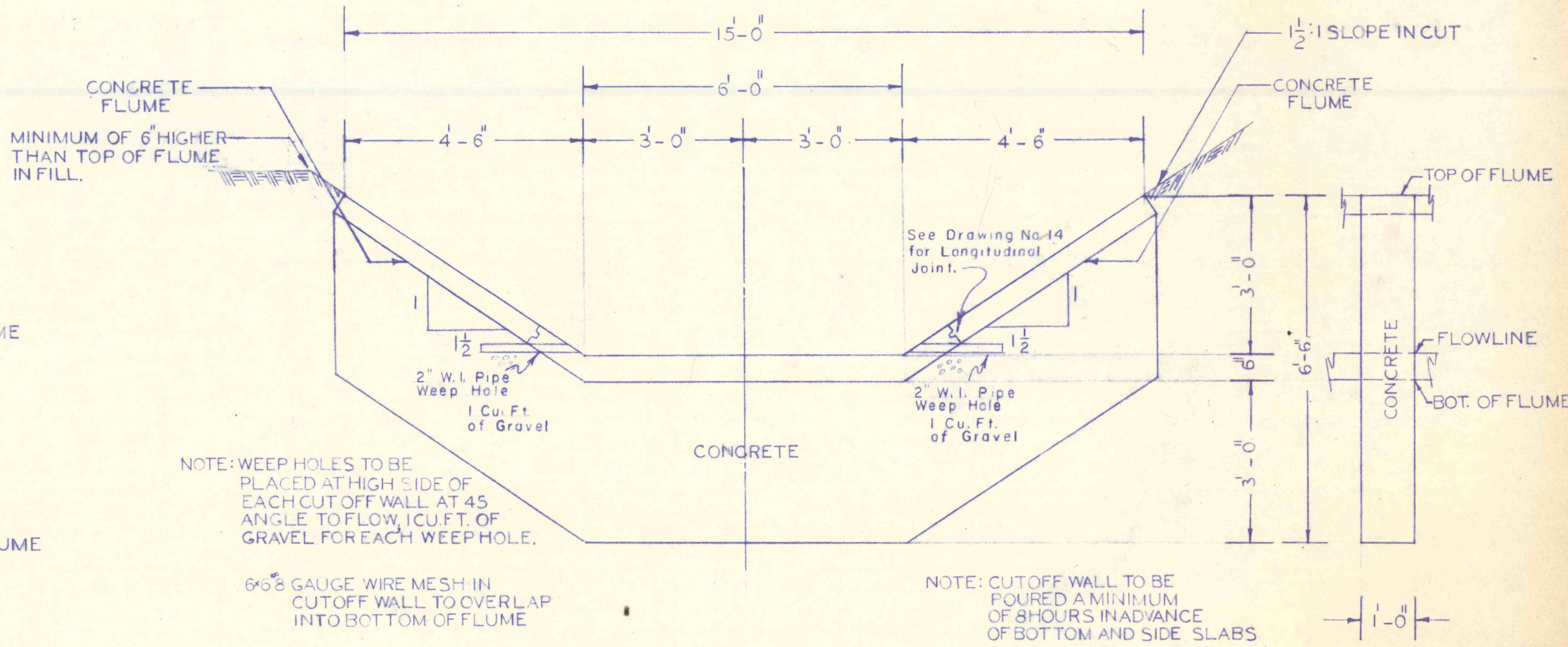
TYPICAL SECTION OF EARTH DITCH STA. 1+58 TO STA. 7+60



TYPICAL SECTION OF CONCRETE FLUME



ENDWALL SECTION STA. 7+60



TYPICAL SECTION OF CUT OFF WALL STA. 17+50

STATE-FEDERAL MINE WATER CONTROL PROJECT NO. _____
 ESPY CREEK CHANNEL IMPROVEMENTS
 NANTICOKE CITY, HANOVER & NEWPORT TWPS., LUZ. CO., PA.
 PENNA. DEPT. OF ENVIRONMENTAL RESOURCES
 SCALE: As noted JANUARY 1971
 Drawing No. 15 15 of 15