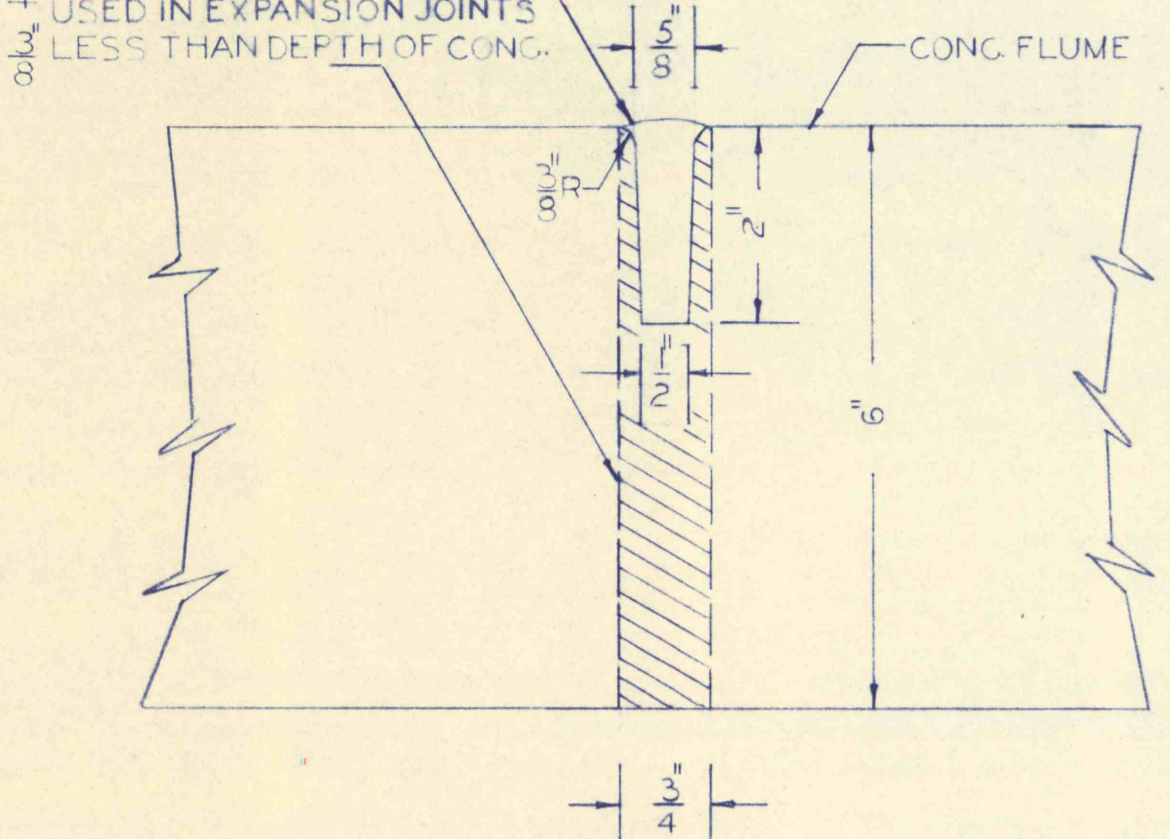
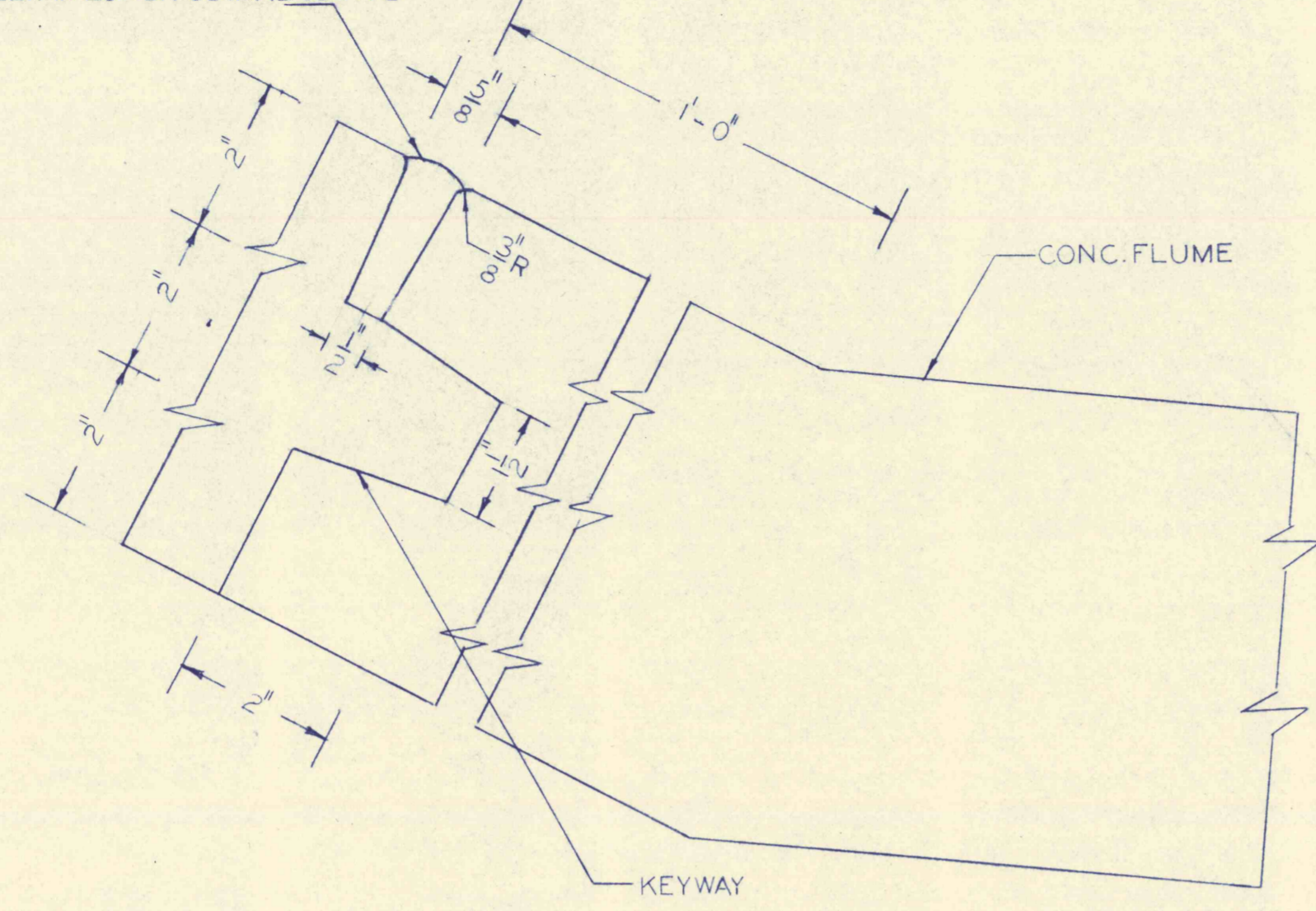


USE TAR OR BITUMINOUS FILLER IN CONTRACTION JOINTS

REMODELLED FILLER TO BE USED IN EXPANSION JOINTS LESS THAN DEPTH OF CONG.

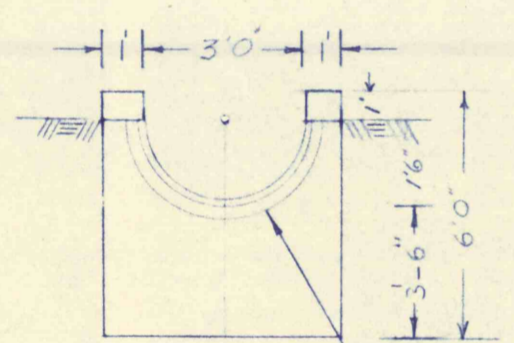


USE TAR OR BITUMINOUS FILLER IN LONGITUDINAL JOINTS

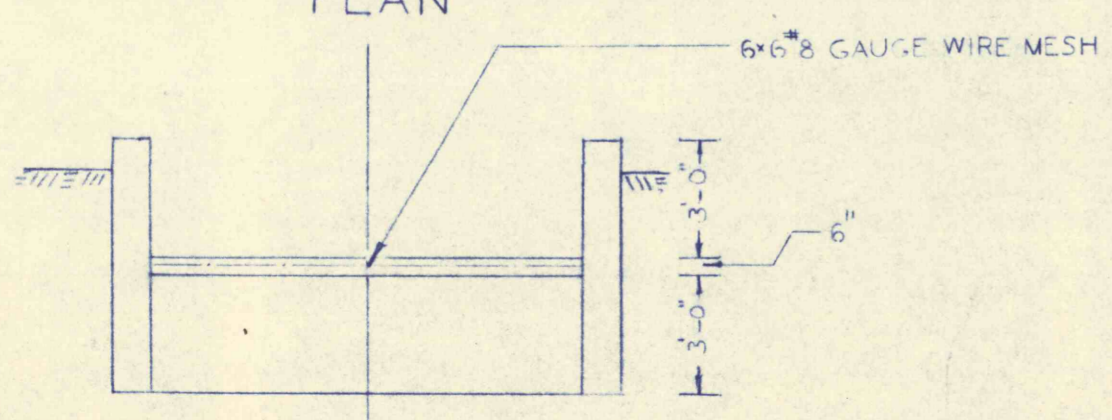
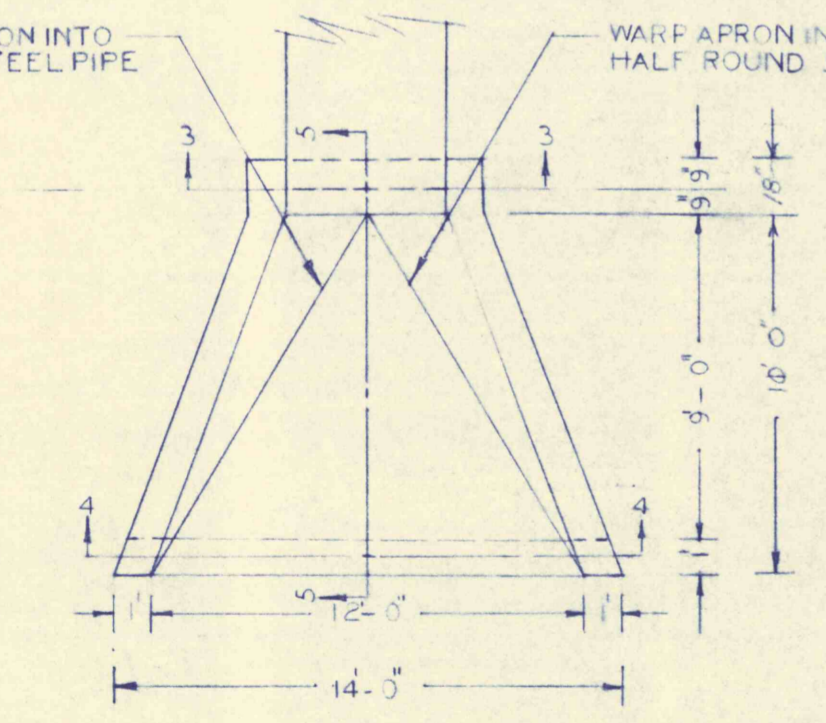
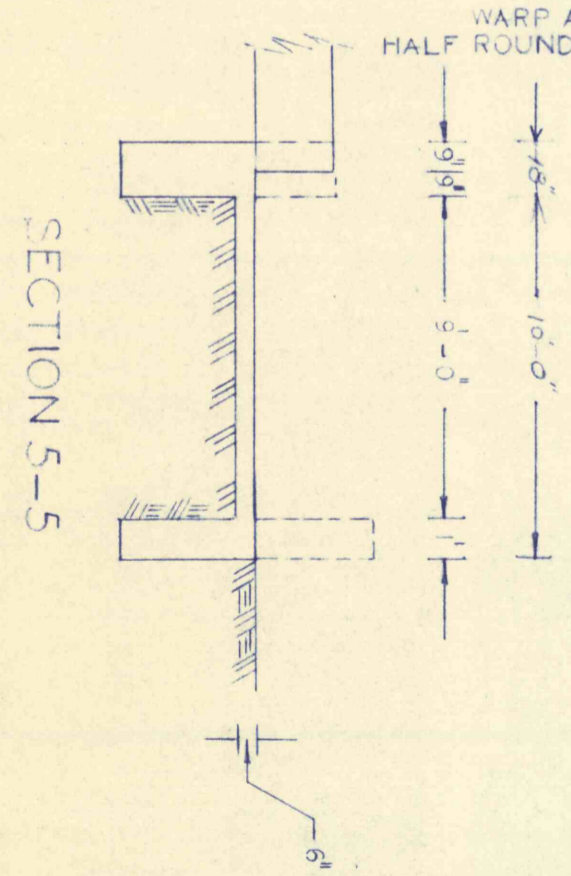


TRANSVERSE CONTRACTION JOINTS  
20 FT. CENTERS  
EXPANSION JOINTS  
100 FT. CENTERS

LONGITUDINAL JOINT

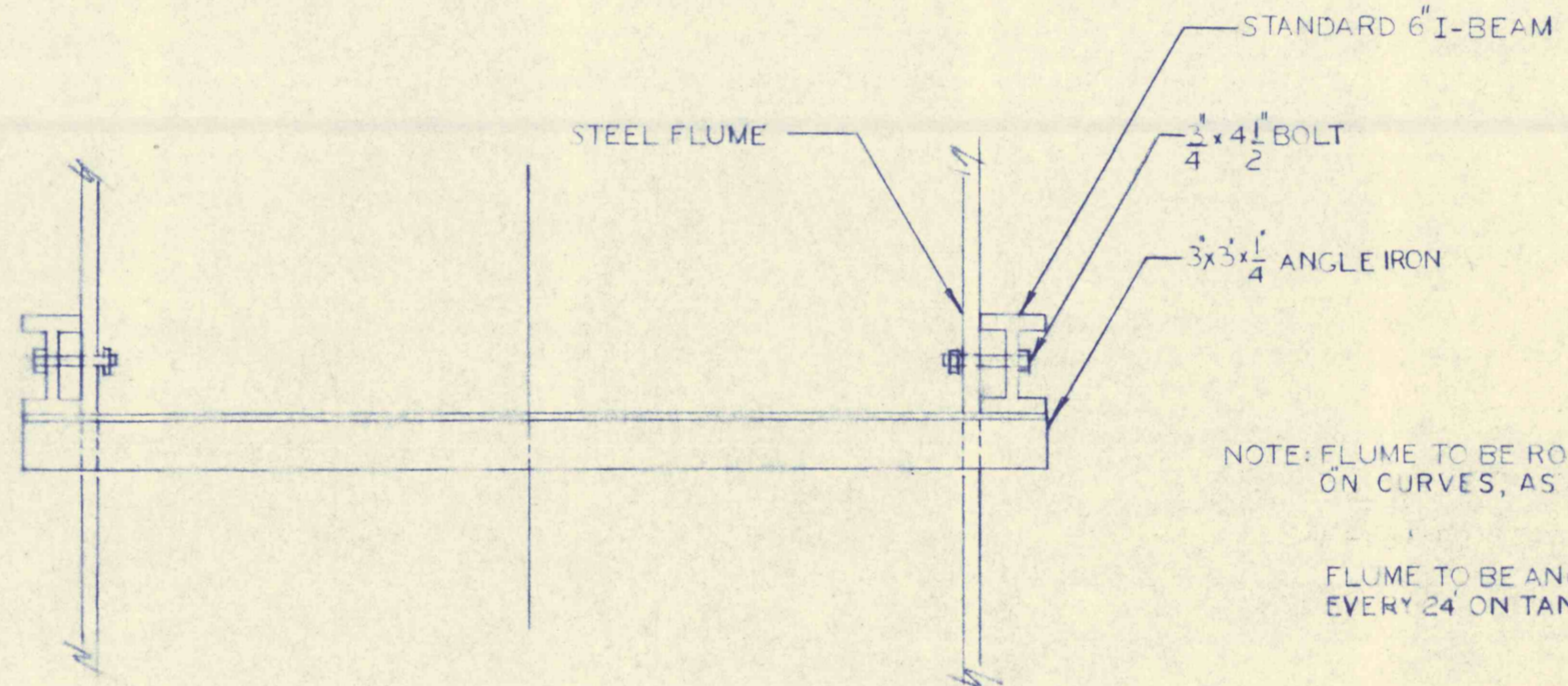


SECTION 3-3 3/8 x 3/4 STEEL BAND TO BE WELDED TO PIPE FOR ANCHOR.

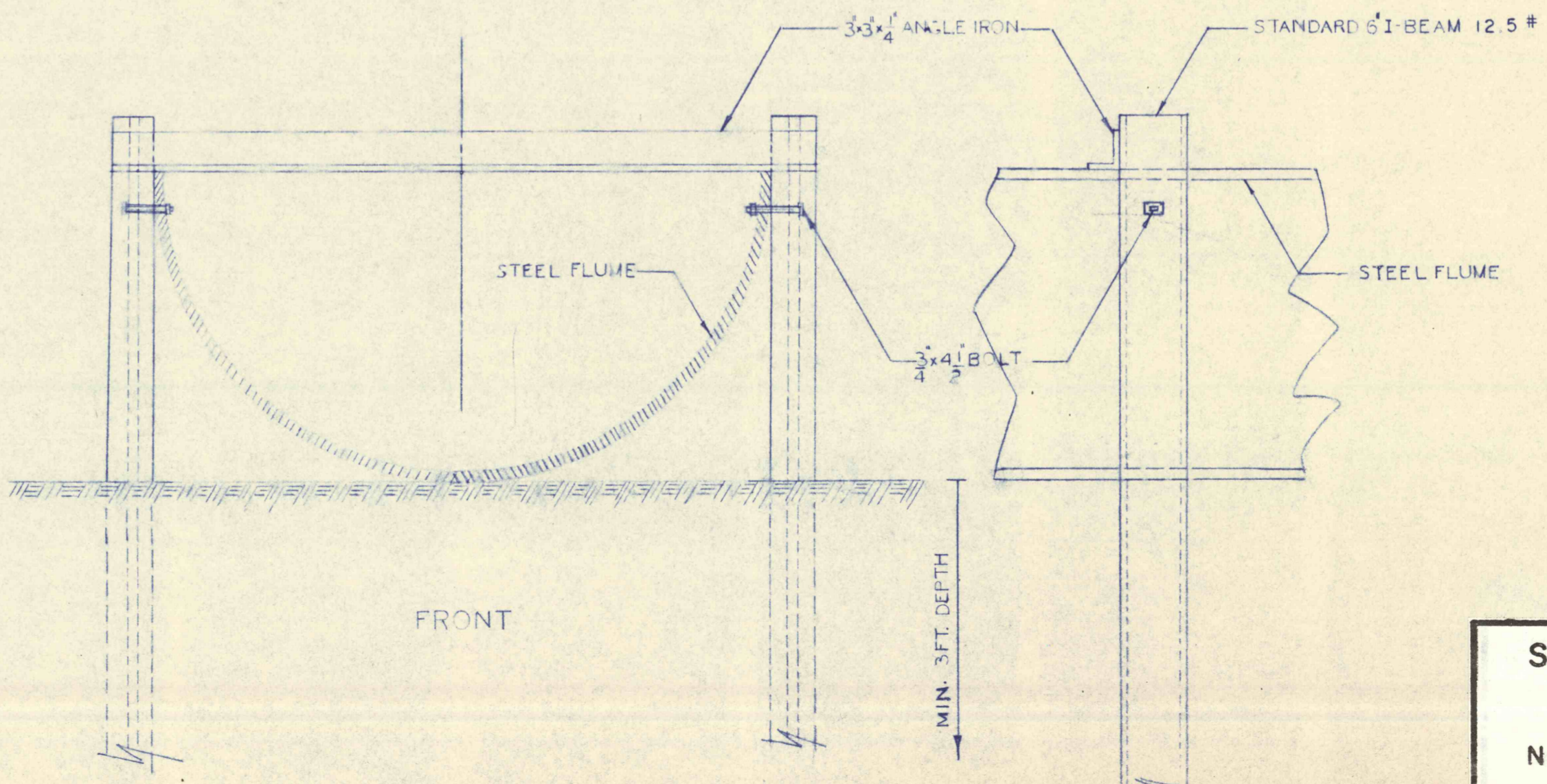


SECTION 4-4

PLAN AND SECTION AT INLETS OF HALF ROUND STEEL PIPE SCALE 3/16



PLAN



FRONT

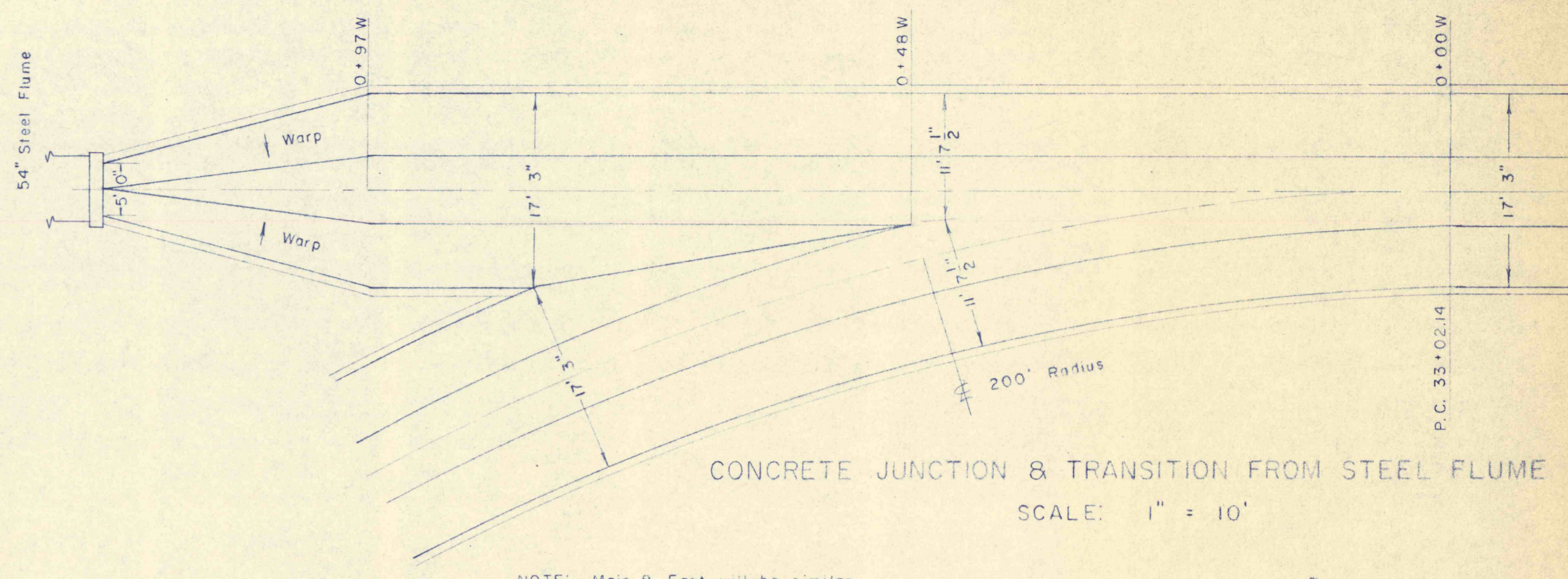
SIDE

STEEL FLUME CONSTRUCTION FOR SURFACE INSTALLATION

NOTE: FLUME TO BE ROLLED AND SUPERELEVATED ON CURVES, AS NOTED.

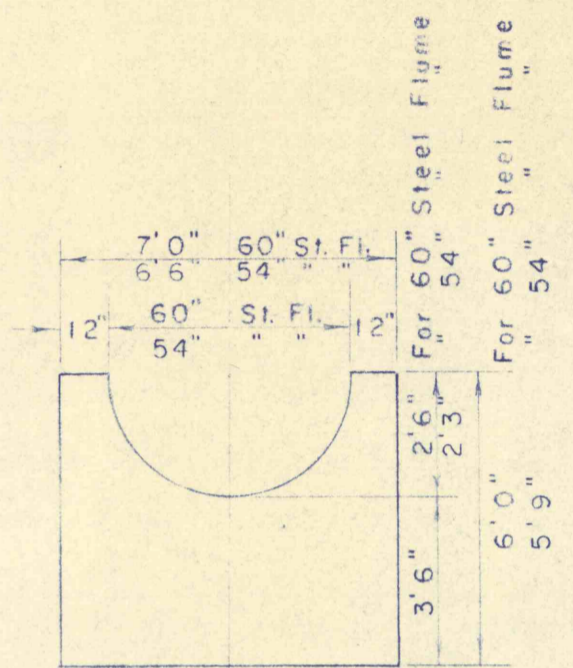
FLUME TO BE ANCHORED EVERY 12' ON CURVES 25' AND OVER. EVERY 24' ON TANGENT AND LIGHT CURVES UP TO 25'

0+00 West and Main  
3'9" Flume depth  
Junction 10" Thick  
Side walls 1 1/2 to 1

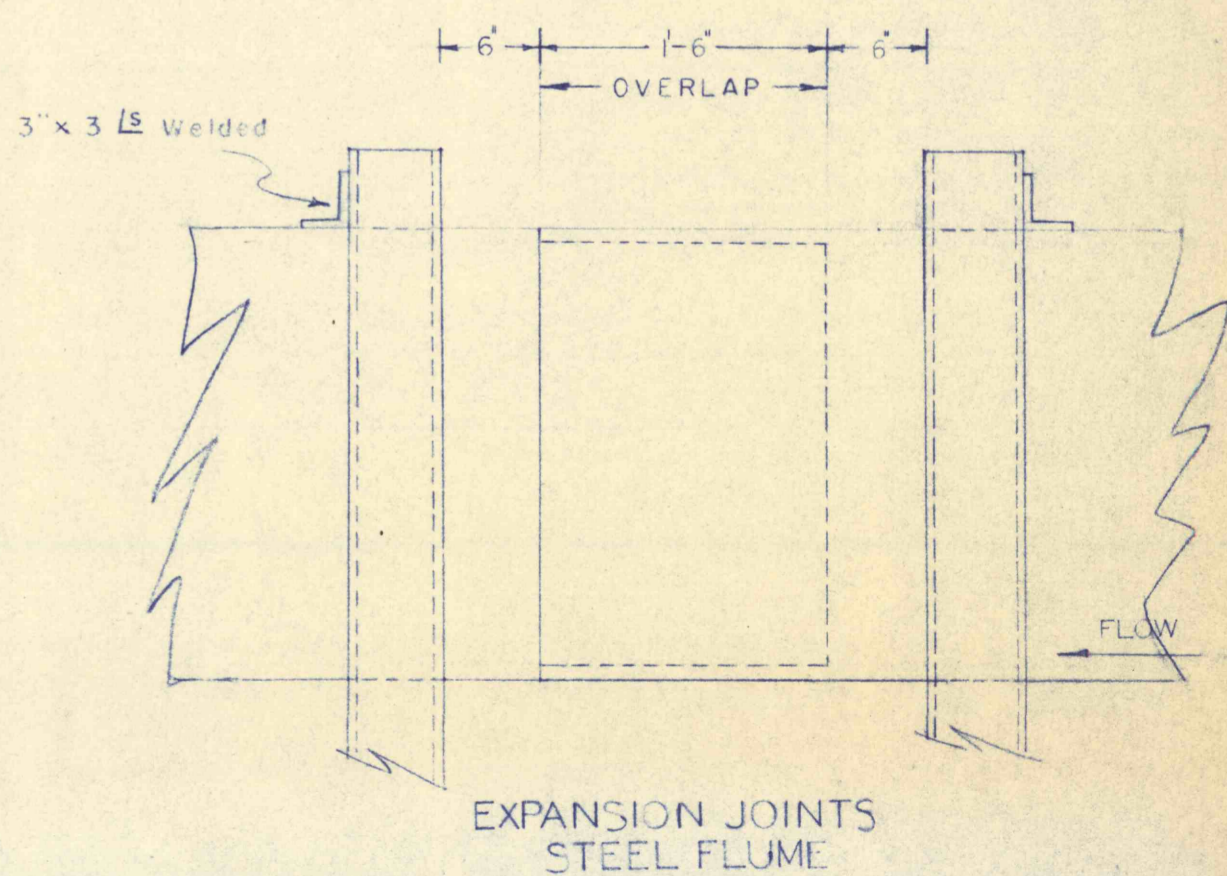


CONCRETE JUNCTION & TRANSITION FROM STEEL FLUME  
SCALE: 1" = 10'

NOTE: Main & East will be similar.



18" CONCRETE WALL CONNECTION  
54" & 60" ST. FL. TO CONCRETE JUNCTIONS  
SCALE: 1/4" = 12"



EXPANSION JOINTS STEEL FLUME

STATE-FEDERAL MINE WATER CONTROL PROJECT NO. \_\_\_\_\_  
ESPY CREEK CHANNEL IMPROVEMENTS  
NANTICOKE CITY, HANOVER & NEWPORT TWPS., LUZ. CO., PA.  
PENNA. DEPT. OF ENVIRONMENTAL RESOURCES  
SCALE: As noted  
JANUARY 1971