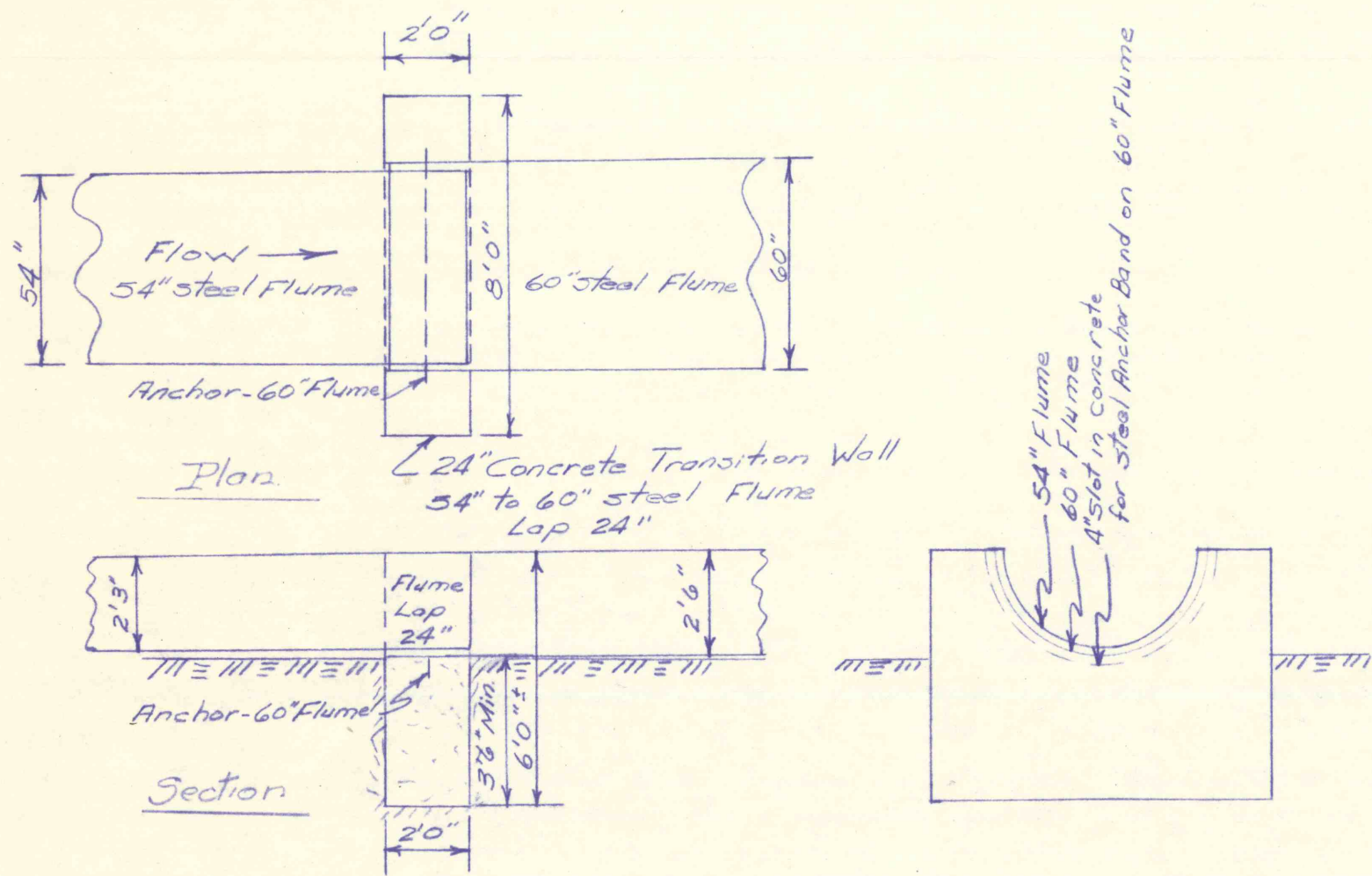
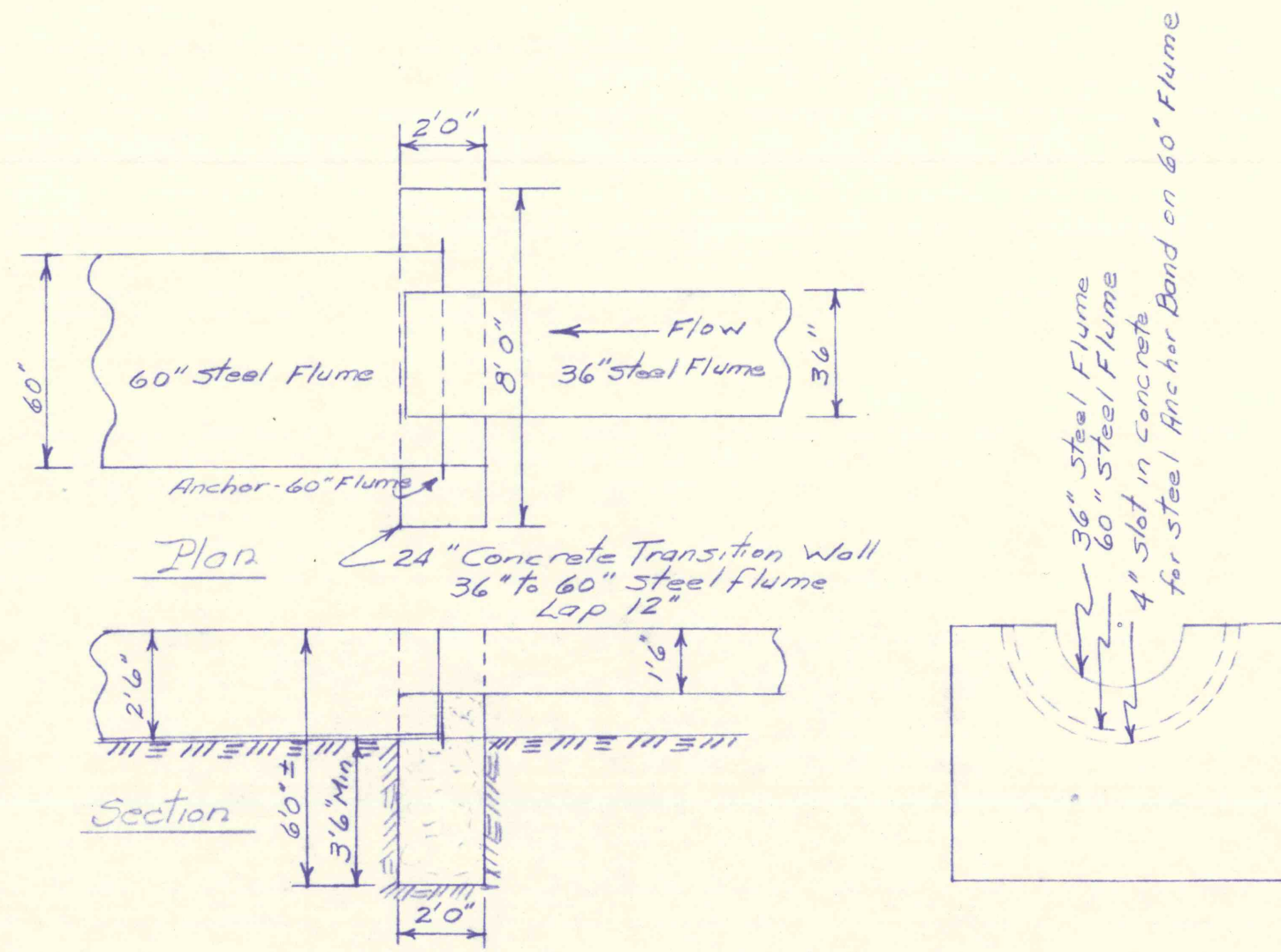


24" TRANSITION WALL  
@17+10.46 Part J



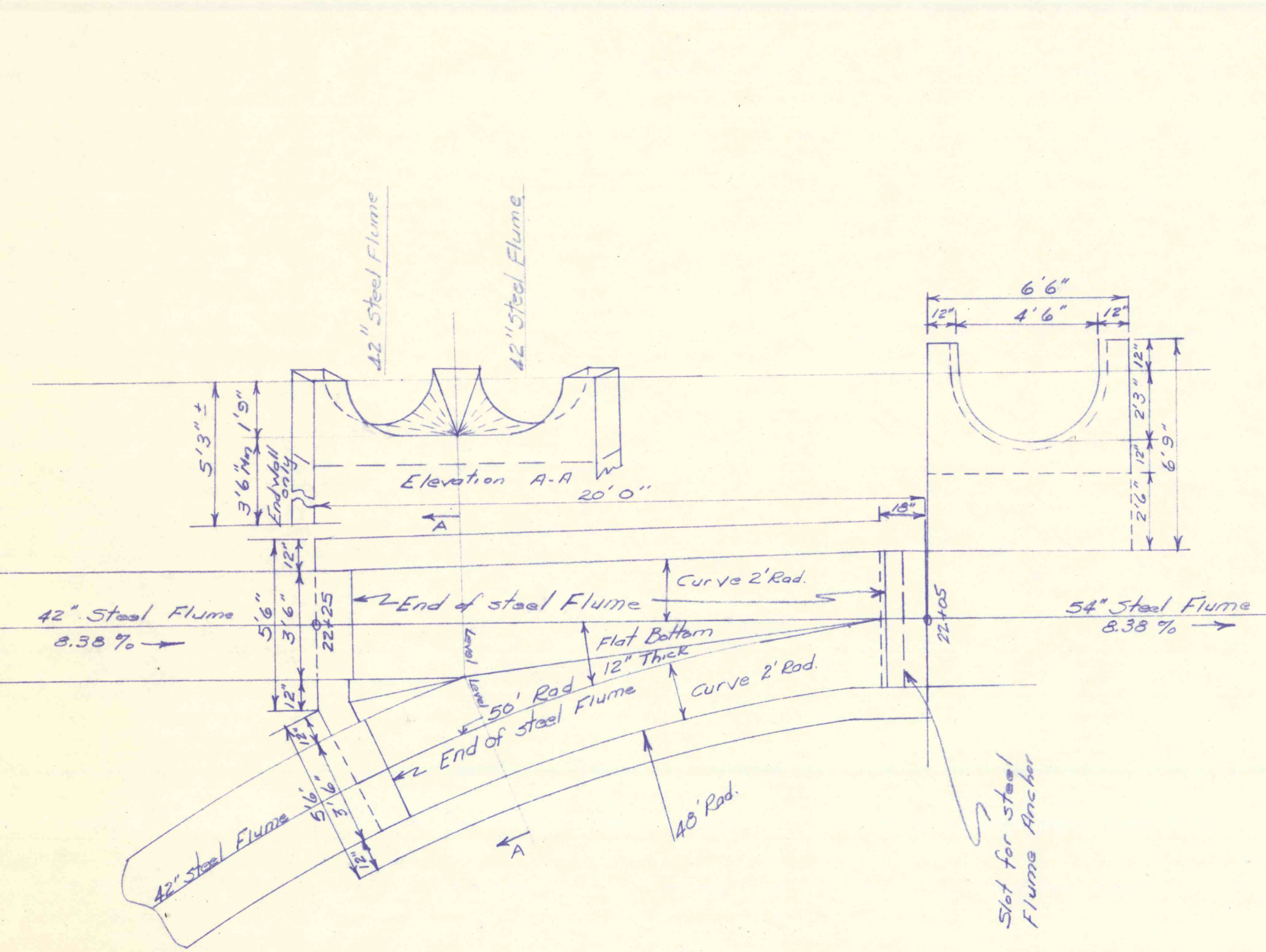
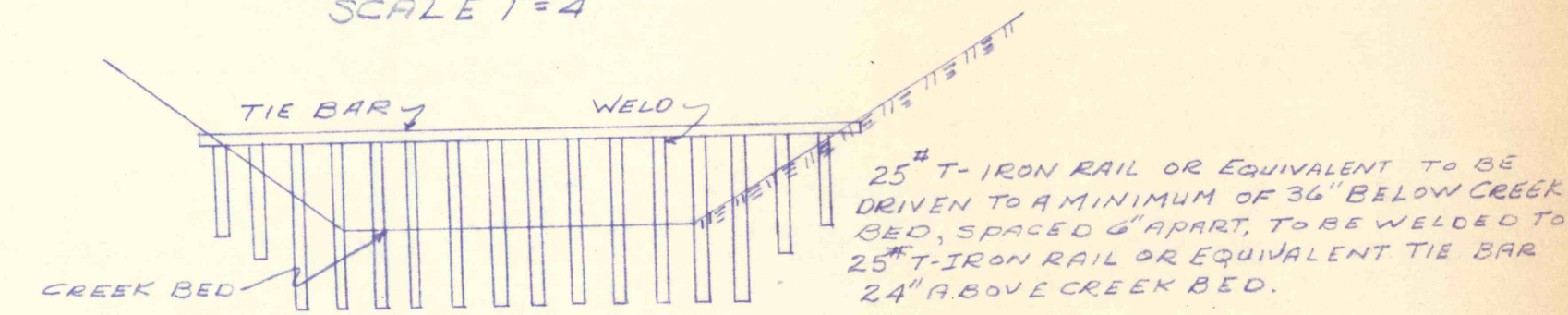
Scale 1/4" = 12"

24" TRANSITION WALL  
@14+20 Part H



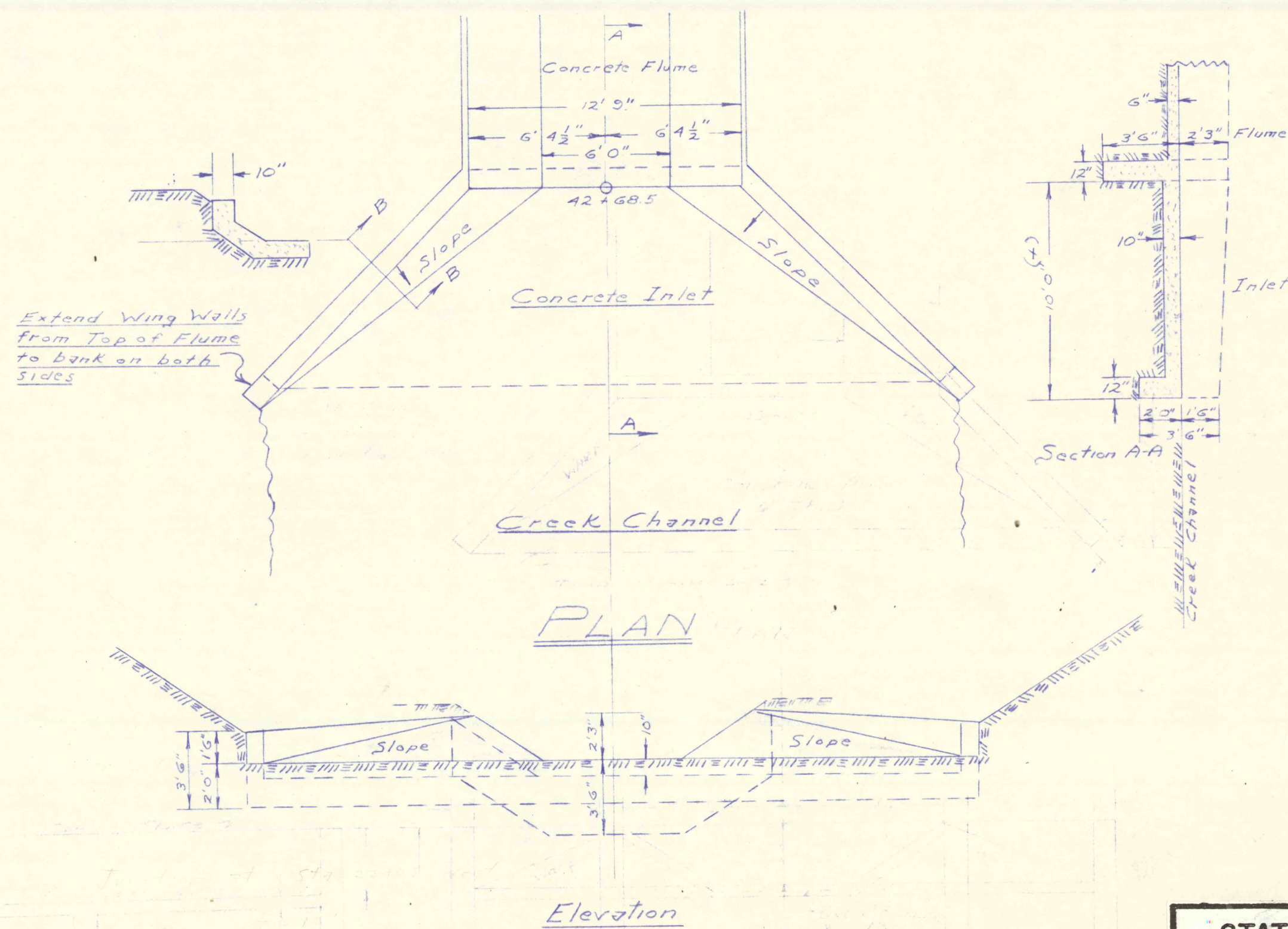
Scale 1/4" = 12"

TYPICAL SECTION OF TRASH  
RACK TO BE INSTALLED BEYOND  
INLET OF ALL BRANCHES  
SCALE 1" = 4'



CONCRETE JUNCTION AT STA. 22+05 WEST

Scale: 1/4" = 12"



Scale: 3/16" = 12"

STATE-FEDERAL MINE WATER CONTROL PROJECT NO. \_\_\_\_\_  
ESPY CREEK CHANNEL IMPROVEMENTS  
NANTICOKE CITY, HANOVER & NEWPORT TWPS., LUZ. CO., PA.  
PENNA. DEPT. OF ENVIRONMENTAL RESOURCES  
SCALE: As noted  
JANUARY 1971