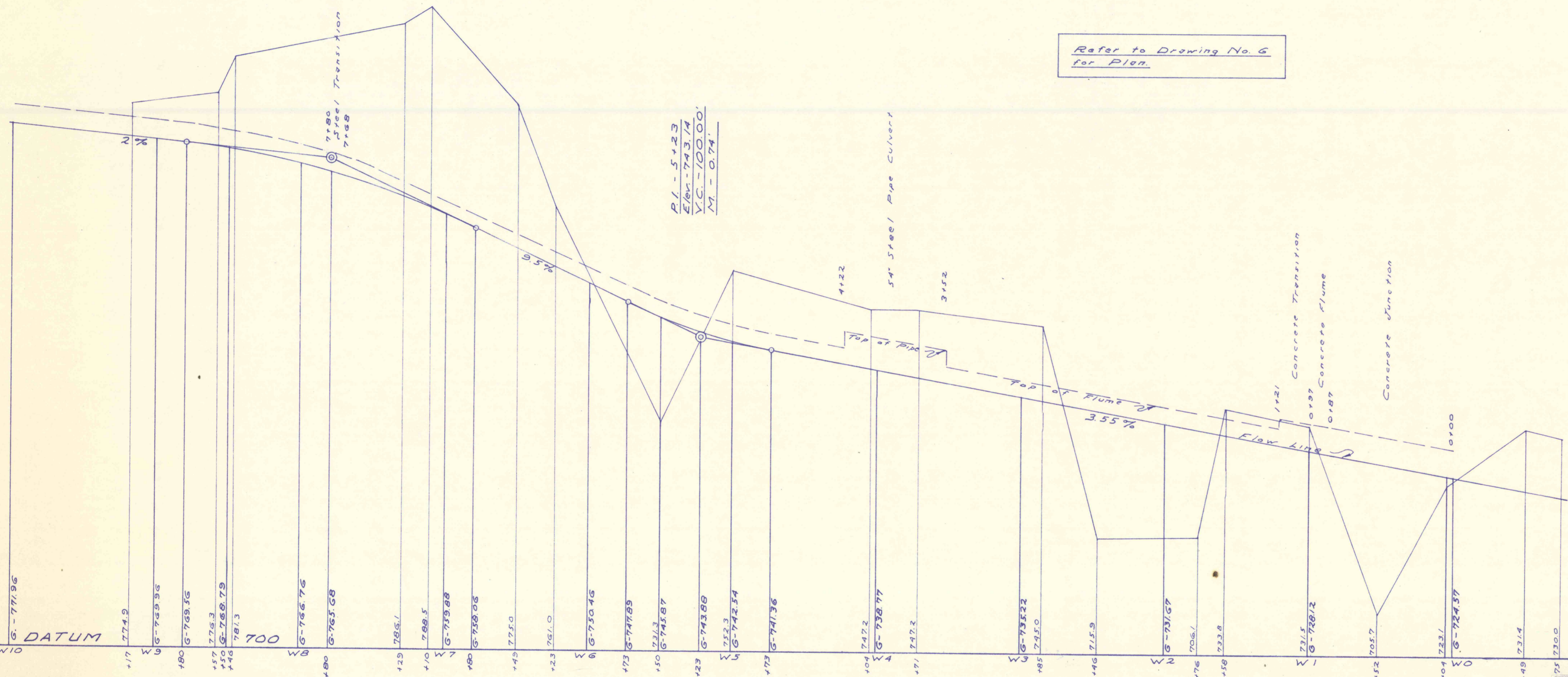


P.I. - 7+80
 Elev - 767.55
 V.C. - 200.00'
 M. - 1.88'

P.I. - 5+23
 Elev - 743.14
 V.C. - 100.00'
 M. - 0.74'

Refer to Drawing No. 6
 for Plan.



WEST BRANCH - SCALE: HOR. 1" = 50'
VERT. 1" = 10'

STATE-FEDERAL MINE WATER CONTROL PROJECT NO. ___
 ESPY CREEK CHANNEL IMPROVEMENTS
 NANTICOKE CITY, HANOVER & NEWPORT TWPS., LUZ. CO., PA.
 PENNA. DEPT. OF ENVIRONMENTAL RESOURCES
 SCALE: As noted
 JANUARY 1971
 Drawing No. 11
 11 of 15