

WEST BRANCH - SCALE: HOR. 1" = 50'
VERT. 1" = 10'



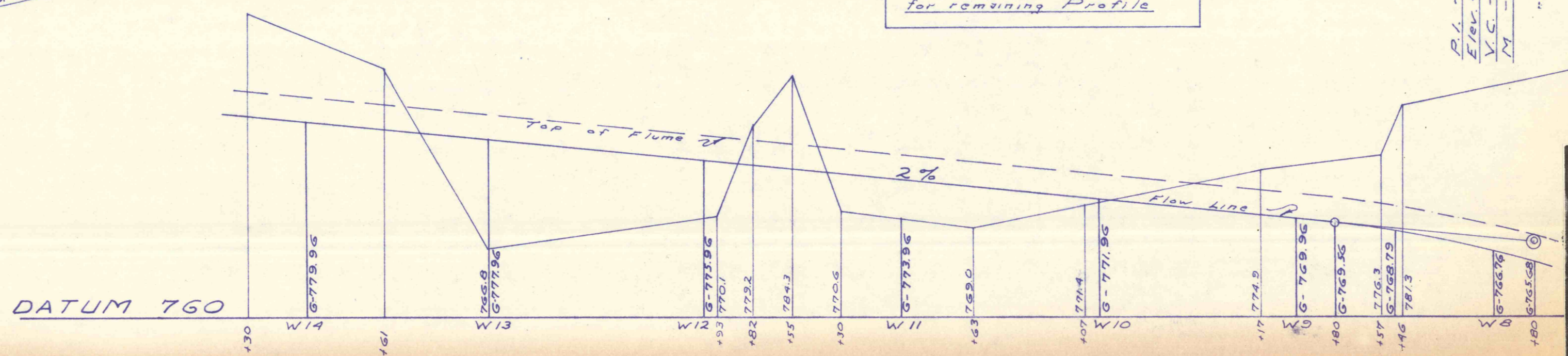
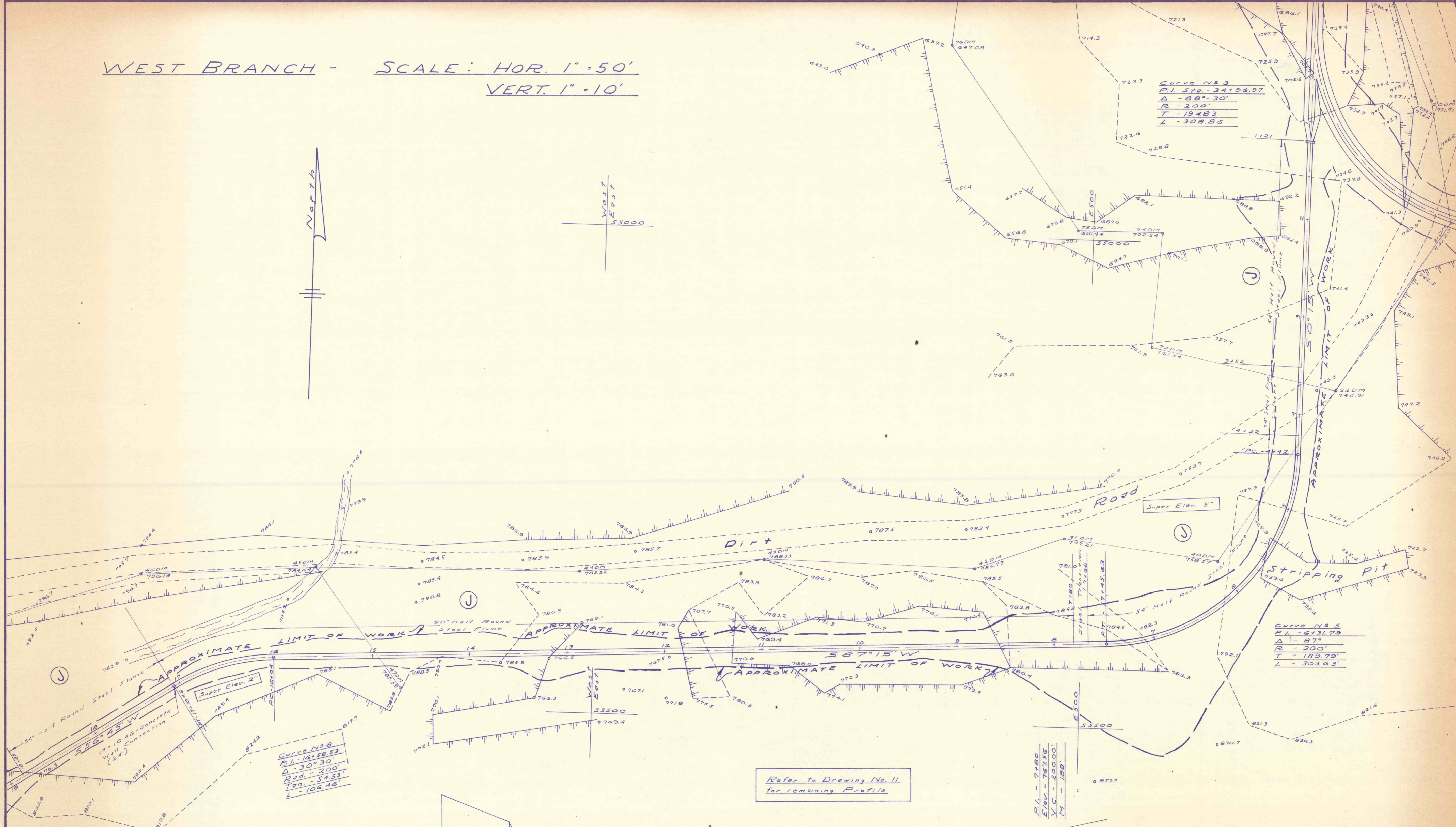
Curve N 3
 P.I. - 34+96.97
 Δ - 88° 30'
 R - 200'
 T - 194.83
 L - 308.85

Curve N 5
 P.I. - 6+31.79
 Δ - 87°
 R - 200'
 T - 189.79'
 L - 303.63'

Curve N 8
 P.I. - 16+58.53
 Δ - 30° 30'
 R - 200'
 T - 54.53'
 L - 106.46'

Refer to Drawing No. 11
 for remaining Profile

P.I. - 7+80
 Elev. - 767.56
 V.C. - 200.00
 M - 188'



STATE-FEDERAL MINE WATER CONTROL PROJECT NO. —
 ESPY CREEK CHANNEL IMPROVEMENTS
 NANTICOKE CITY, HANOVER & NEWPORT TWPS., LUZ. CO., PA.
 PENNA. DEPT. OF ENVIRONMENTAL RESOURCES
 SCALE: As noted
 JANUARY 1971
 Drawing No. 6
 6 of 15