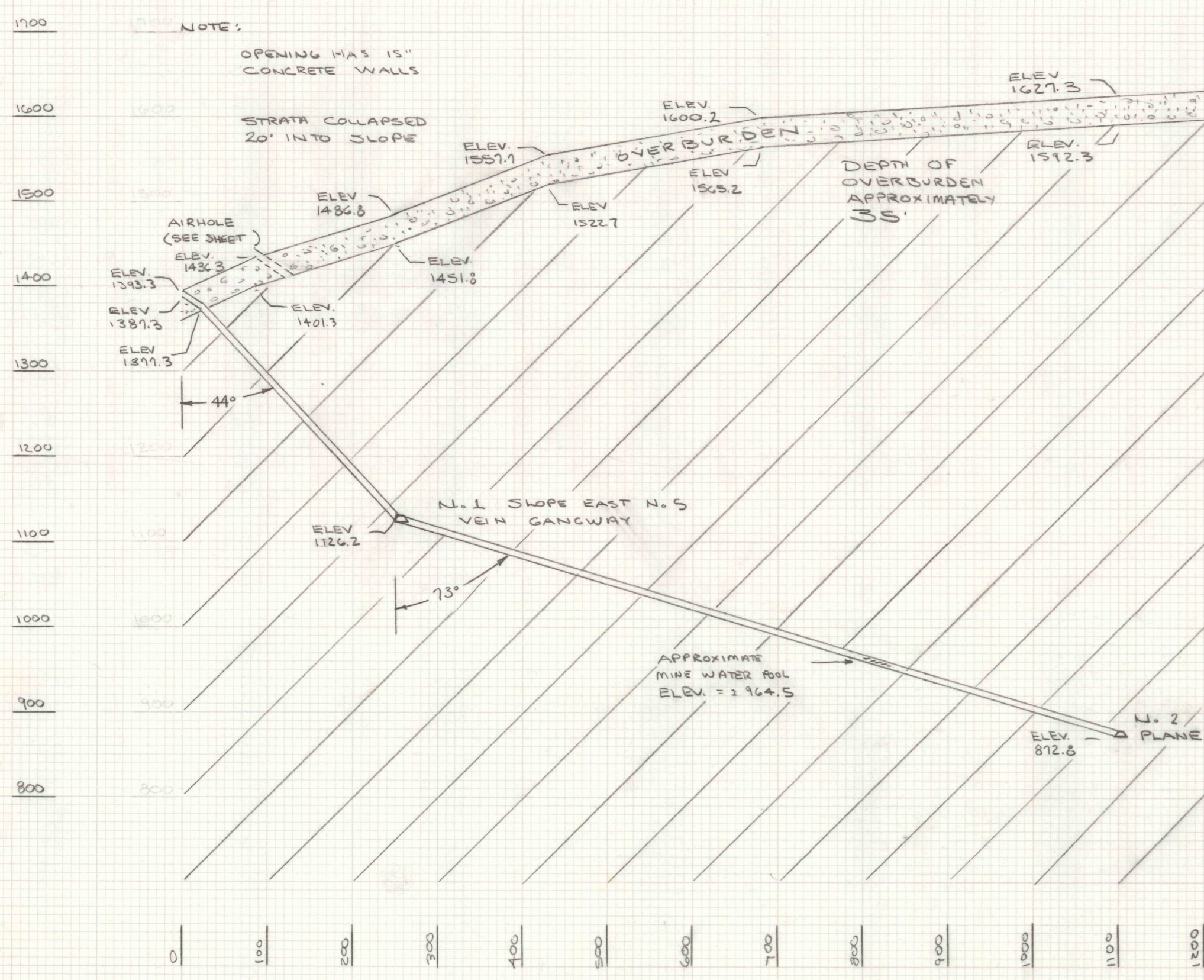


①

AIRWAY
CONCRETE & STEEL
8' x 6' OPENING
(LOOKING WEST)
SCALE: 1" = 100'



②

No 4 SLOPE
20' x 10' OPENING
(LOOKING WEST)
SCALE: 1" = 100'

NOTE: OPENING IS 12" CONCRETE ARCH & WALL TWIN SLOPE

NOTE: STRATA COLLAPSED 40' INTO SLOPE

