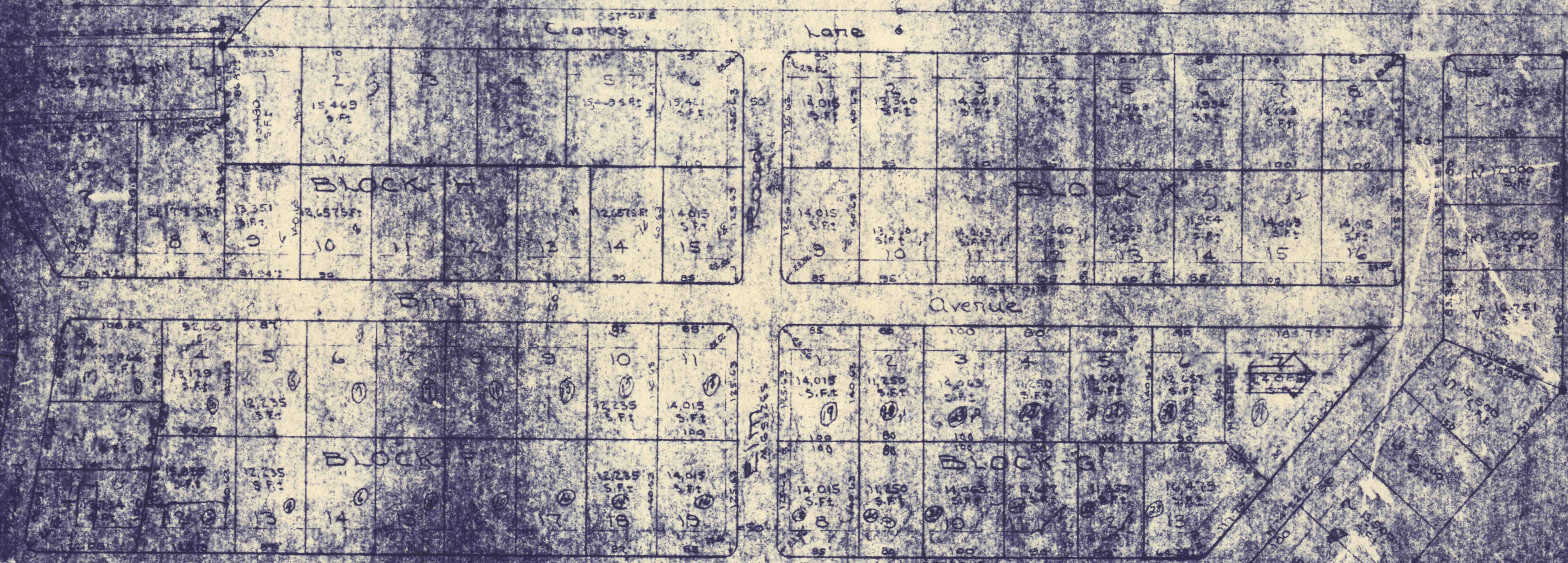


Vincent Cappellini, et ux, et al  
D.B. 1642, P. 1647



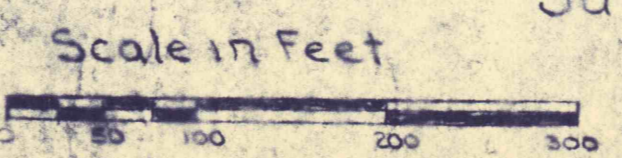
- Notes
- 1- Easements on all roads shown on this plat.
  - 2- For Road Reservations, see Ordinance No. 10, adopted by the Township of Plains, Pa.
  - 3- For Reference to Title of Land, see Luzerne County Deed Book 10, 1240.
  - 4- All Roads shall be constructed and maintained for Utilities Provided as set forth in Ordinance adopted by the Township of Plains, Pa.
  - 5- Owner: Leo Pensieri, Trustee, 10 Prices Street, Plains, Pa.
  - 6- Boundary Survey, Closed, 1920.

Birchwood Hills

Plains Township  
Luzerne County, Pa.  
Surveyed and Allotted  
For  
Leo Pensieri, Trustee

July 10, 1920.

William M. Donnelly, R.S.  
Pittston, Pa.



Approved by Planning Commission of the Township of Plains, Pa. \_\_\_\_\_ Date \_\_\_\_\_

Approved by Commissioners of the Township of Plains, Pa. \_\_\_\_\_

10.589  
6.2