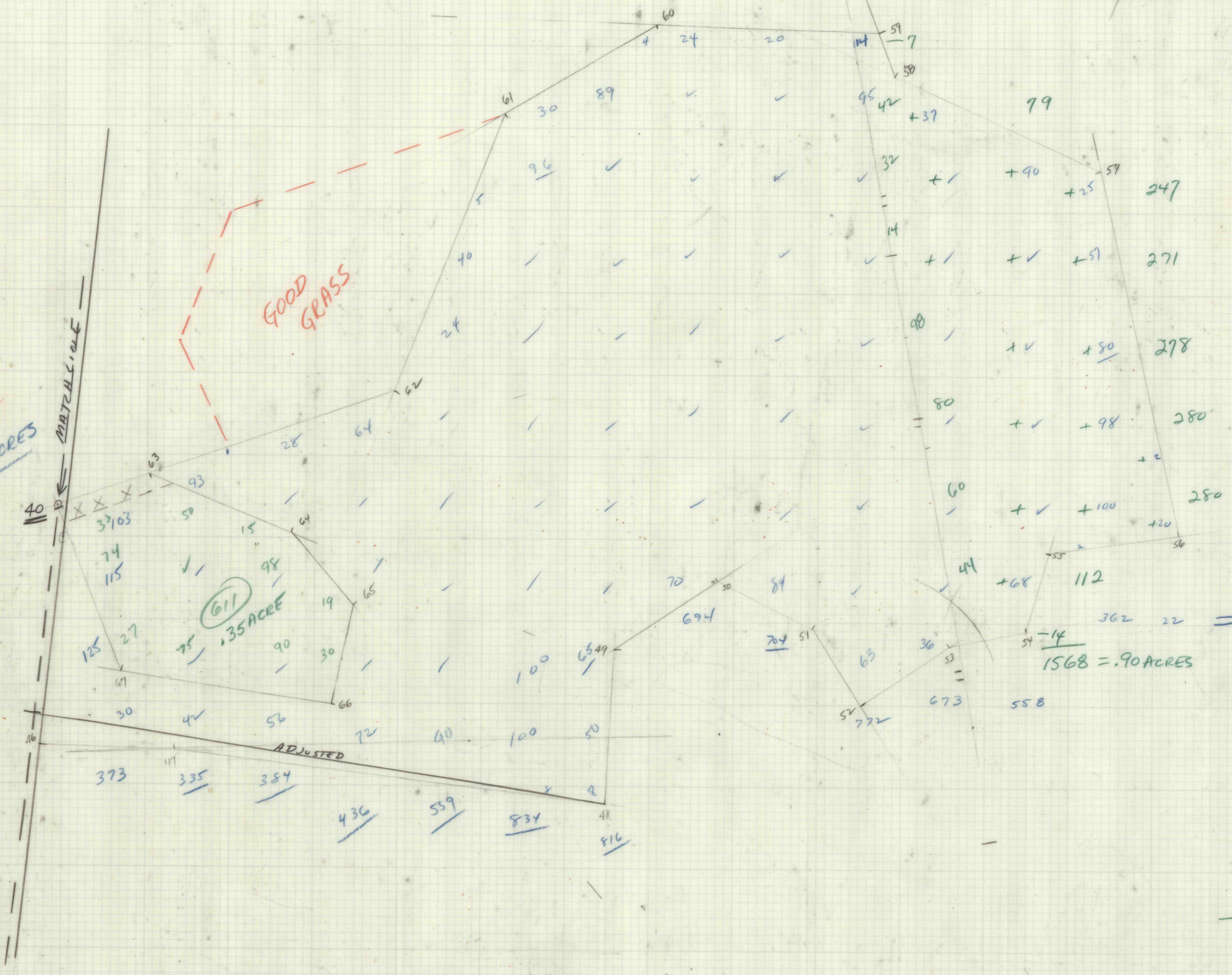


SURFACE - Reading Anthracite Co
Minerals - Charles Faust
Muir, Penna.

SURFACE - George E. Warren Corp.



7519
 4.30 ACRES
 $-.35$

 3.95

 3.95
 1.35

 5.30
 $-.90$

 4.40

Check
 2359
 $+ 7519$
 $- 611$

 7699
 $= 4.4$ acres

262
 300

 562

811
 562

 258

905
 815

 90

$1" = 50'$
 $50 \times 50 = 2500$
 $2500 \div 574 = .574$
 $100 \text{ blocks} = .574 \text{ ACRES}$