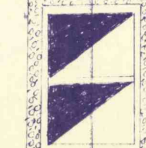
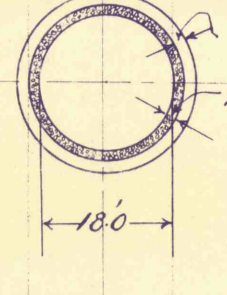


**DUNDEE SHAFT**  
 HANOVER TOWNSHIP  
 LUZERNE CO. PENNA.  
 ENGR'S OFFICE CMD.  
 SCALE 1"=20'



DATUM LINE +6200

SECTION OF CIRCULAR AIR-SHAFT NEAR  
 DEWEY PARK  
 SCALE 1"=20.0

SECTION OF DUNDEE SHAFT LOOKING EAST  
 SCALE 1"=20.0

+400  
 +300  
 +200  
 +100  
 SEA LEVEL  
 -100  
 -200  
 -300  
 -400  
 -500  
 -600  
 -700  
 -800  
 -900  
 -1000  
 -1100  
 -1200  
 -1300  
 -1400  
 -1500  
 -1600  
 -1700  
 -1800  
 -1900  
 -2000  
 -2100  
 -2200  
 -2300  
 -2400  
 -2500  
 -2600  
 -2700  
 -2800  
 -2900  
 -3000  
 -3100  
 -3200  
 -3300  
 -3400  
 -3500  
 -3600  
 -3700  
 -3800  
 -3900  
 -4000  
 -4100  
 -4200  
 -4300  
 -4400  
 -4500  
 -4600  
 -4700  
 -4800  
 -4900  
 -5000  
 -5100  
 -5200  
 -5300  
 -5400  
 -5500  
 -5600  
 -5700  
 -5800  
 -5900  
 -6000  
 -6100  
 -6200  
 -6300  
 -6400  
 -6500  
 -6600  
 -6700  
 -6800  
 -6900  
 -7000  
 -7100  
 -7200  
 -7300  
 -7400  
 -7500  
 -7600  
 -7700  
 -7800  
 -7900  
 -8000  
 -8100  
 -8200  
 -8300  
 -8400  
 -8500  
 -8600  
 -8700  
 -8800  
 -8900  
 -9000  
 -9100  
 -9200  
 -9300  
 -9400  
 -9500  
 -9600  
 -9700  
 -9800  
 -9900  
 -10000

