

JOHN C. BAUMAN
10-7-60 M-344
80.00 ACS.

BELLEVUE
MAIN SHAFT
ELEV. +755.2
FILLED 1959

JOHN C. BAUMAN
10-7-60 M-344
80.00 ACS.

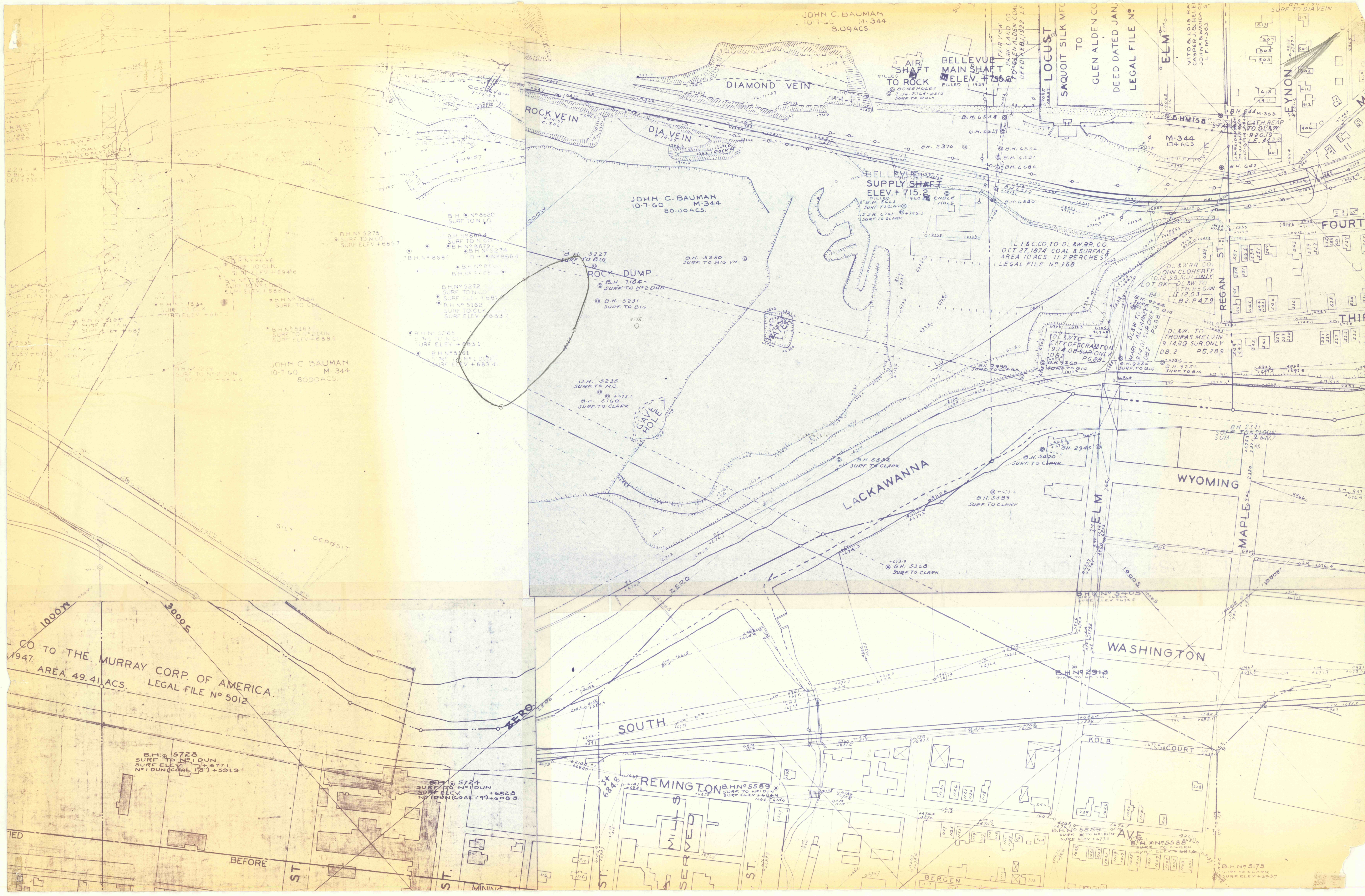
JOHN C. BAUMAN
10-7-60 M-344
80.00 ACS.

CO. TO THE MURRAY CORP. OF AMERICA.
1947. AREA 49.41 ACS. LEGAL FILE NO 5012

REMINGTON & H.N. 5589
SURF TO NO. 1 DUN
SURF ELEV. +688.9

B.H. 5724
SURF TO NO. 1 DUN
SURF ELEV. +682.8
NO. 1 DUN (COAL 19) +608.8

B.H. 5728
SURF TO NO. 1 DUN
SURF ELEV. +677.1
NO. 1 DUN (COAL 18) +591.9



ROCK VEIN
C. 500

DIAMOND VEIN
12-11-57

DIA VEIN
7-19-57

ROCK DUMP
B.H. 5227
SURF TO BIG

BELLEVUE
SUPPLY SHAFT
ELEV. +715.2
FILLED 1940

L. I. & CO. TO D. & W. R. CO.
OCT 27, 1874. COAL & SURFACE
AREA 10 ACS. 11.2 PERCHES
LEGAL FILE NO 168

D. & W. R. CO.
JOHN CLOHEATH
OCT 12, 1874. COAL & SURFACE
LOT B4 - DL & W. TO
RTH REGAN
IT 12.03
PG. 289

D. & W. TO
THOMAS MELVIN
9.14.80 SURF. ONLY
DB. 2
PG. 289

LACKAWANNA

WYOMING

WASHINGTON

SOUTH

REMINGTON

KOLB

AVE

BEFORE

ST.

ST.

ST.

ST.

BERGEN

LEGAL FILE NO 5173
SURF TO CLARK
SURF ELEV. +693.7