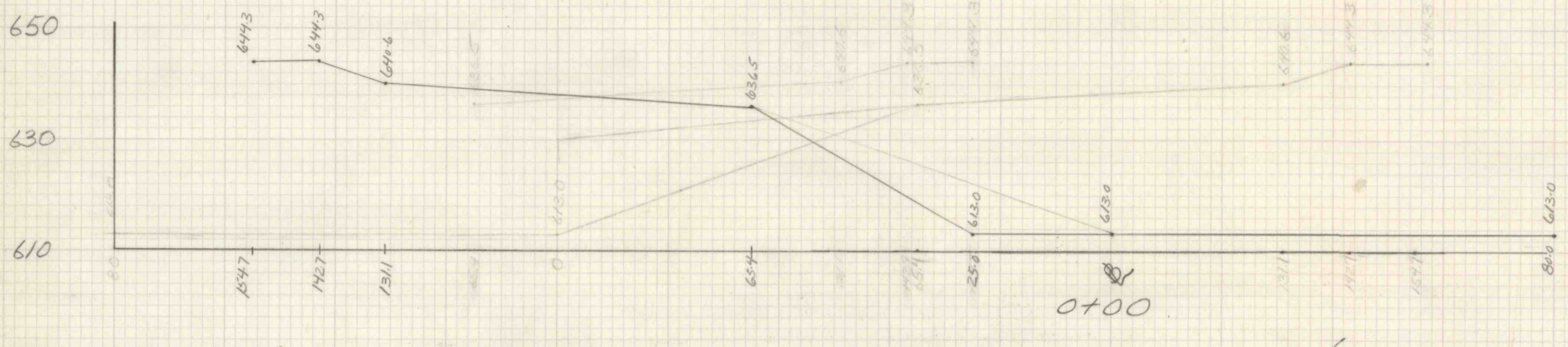


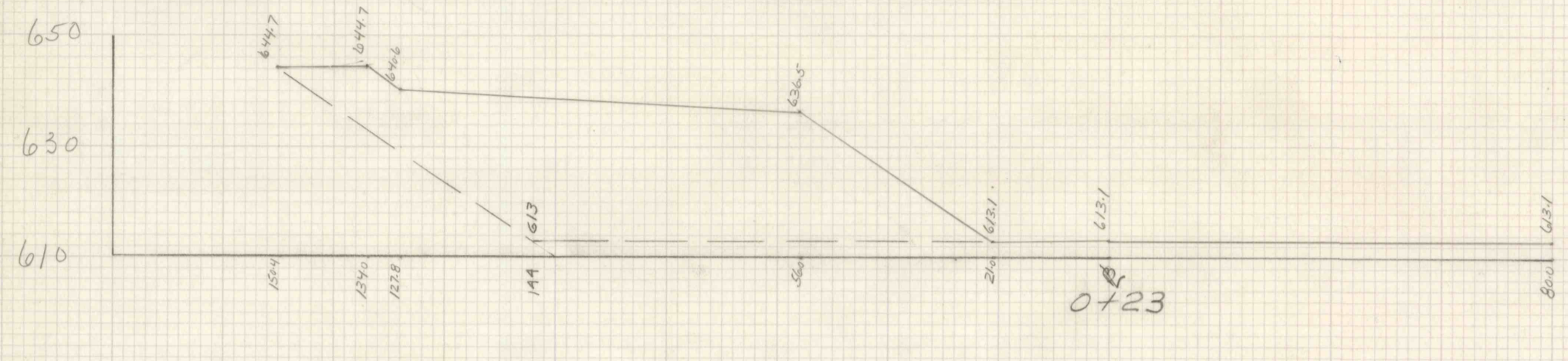
# SWINICK'S BANK #2 DUNMORE CROSS SECTIONS

JULY 1976

SCALE 1" = 20' HORIZ. & VERT.

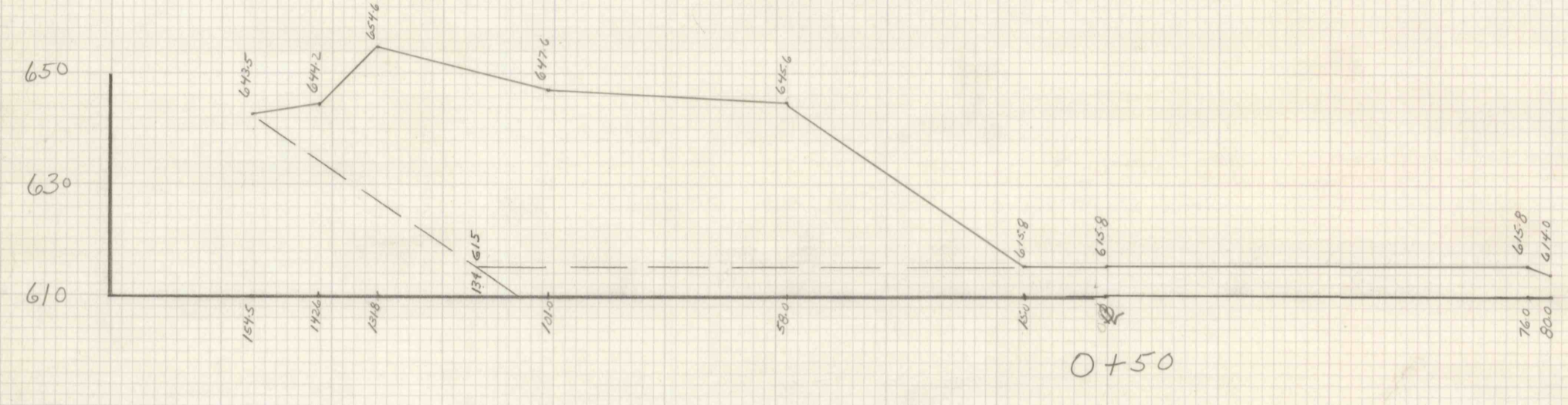


00 S.F.



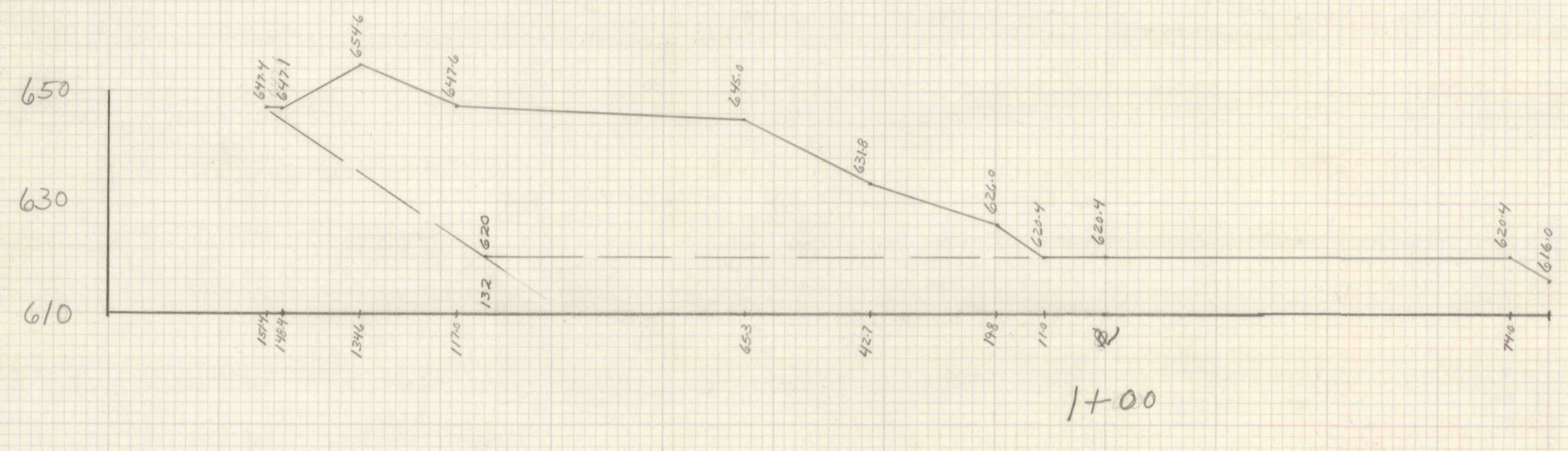
2,843.61 S.F.

①  $0 + \frac{2,843.61}{2} \times 23 = 32,701.51$



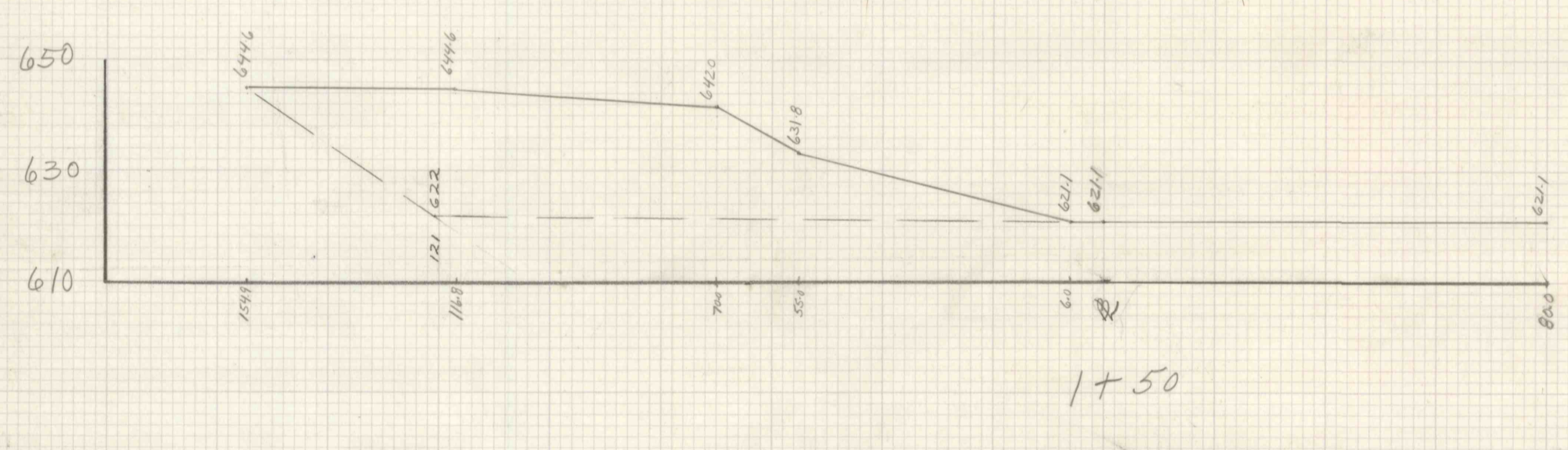
3,520.89 S.F.

②  $\frac{2,843.61 + 3,520.89}{2} \times 27 = 85,920.75$



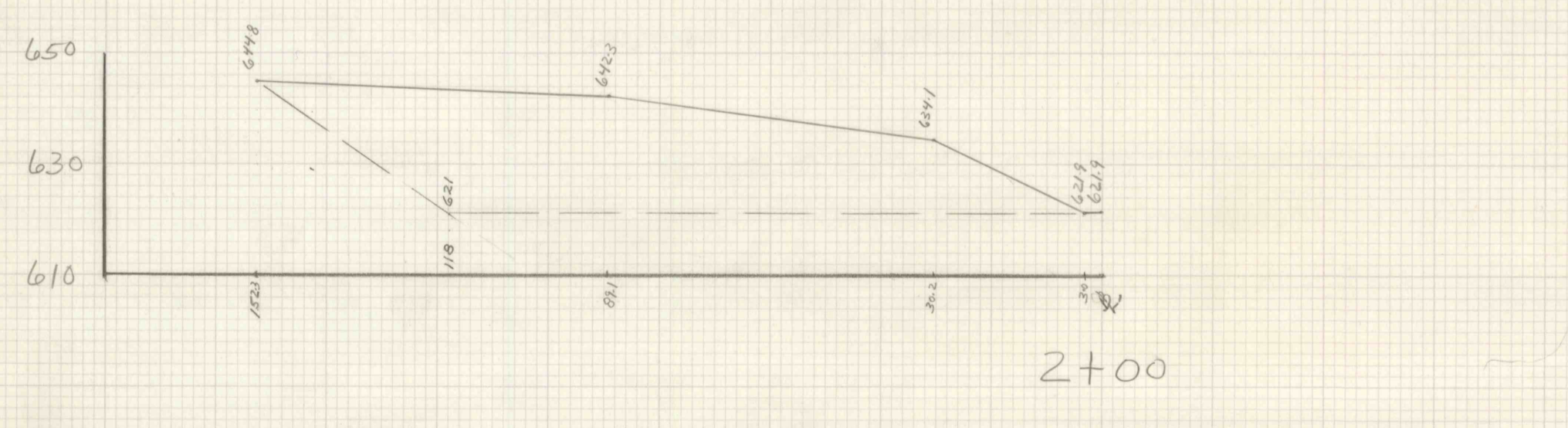
2,772.38 S.F.

③  $\frac{3,520.89 + 2,772.38}{2} \times 50 = 157,331.75$



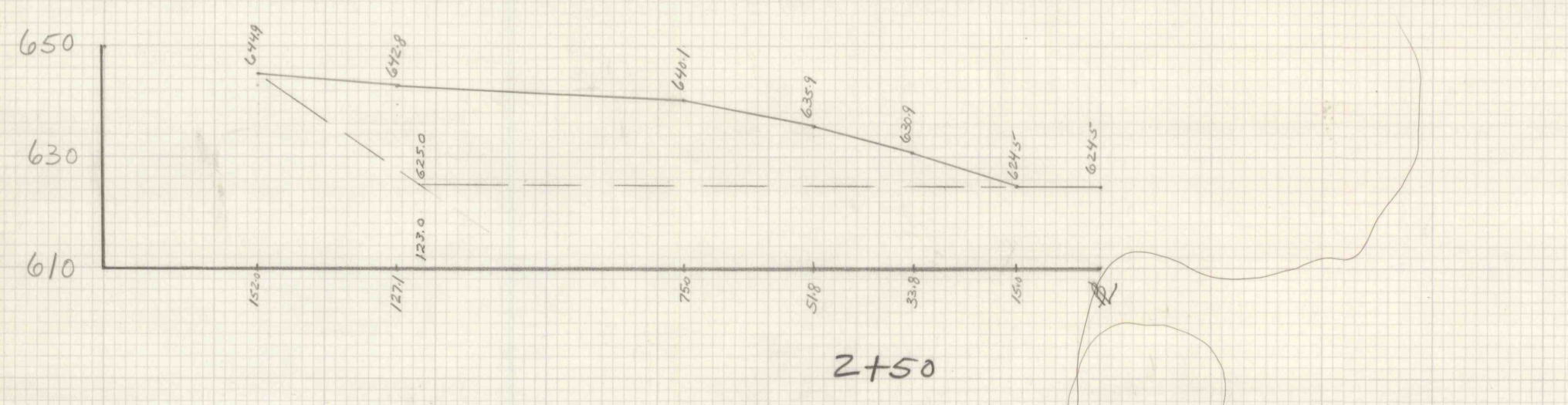
1,968.13

④  $\frac{2,772.38 + 1,968.13}{2} \times 50 = 118,512.75$



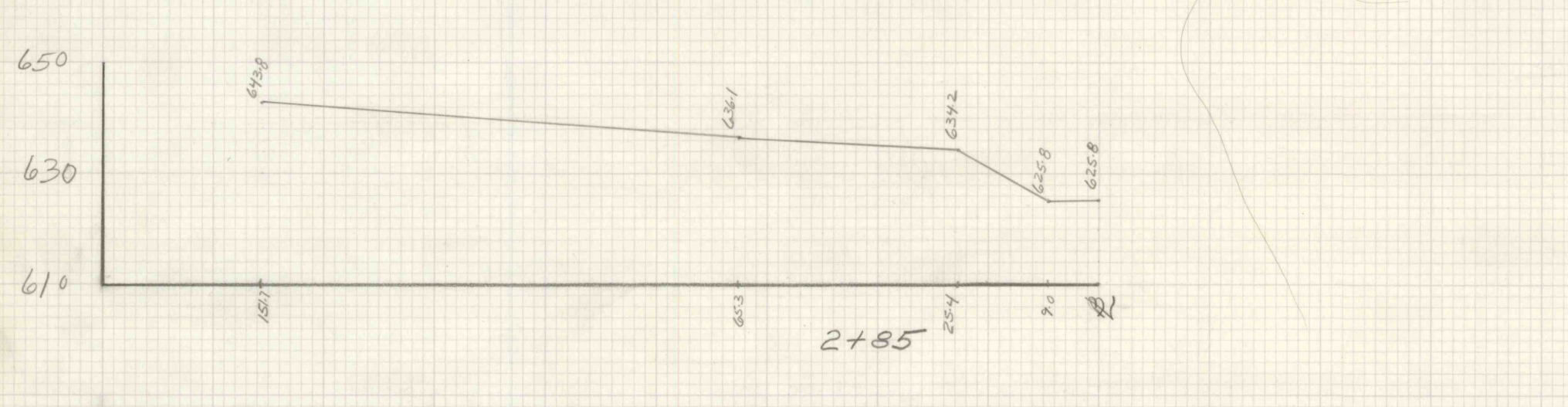
2,168.72 S.F.

⑤  $\frac{1,968.13 + 2,168.72}{2} \times 50 = 103,421.25$



1,568.42 S.F.

⑥  $\frac{1,568.42 + 0}{2} \times 35 = 27,447.35$



00 S.F.

618,763.86 C.F.  
22,317 Cu Yds