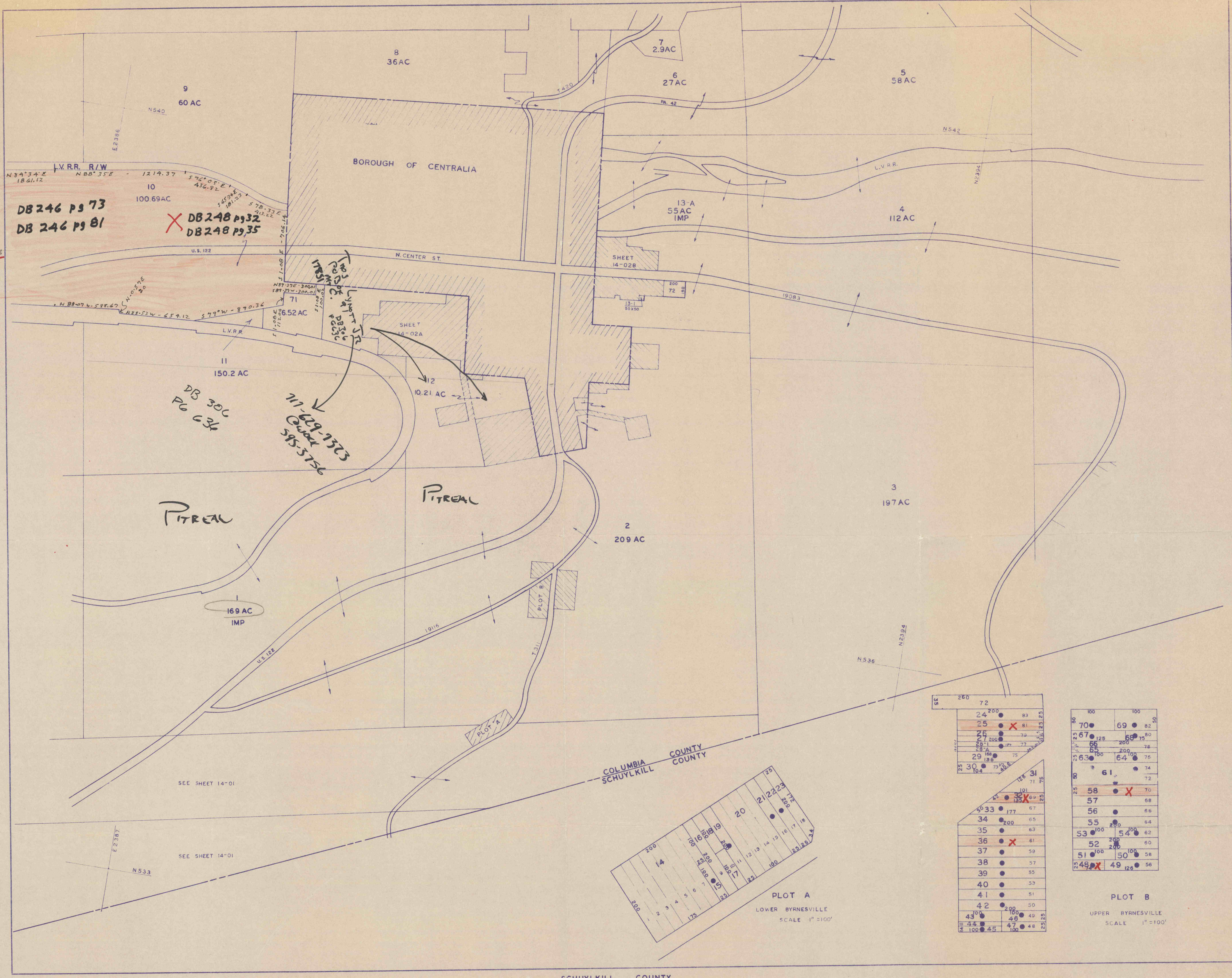


DB 246 P9 73  
 " " P9 81  
 " " P9 26  
 " " P9 81

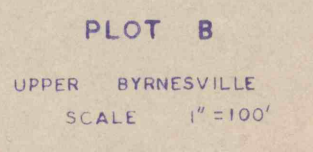
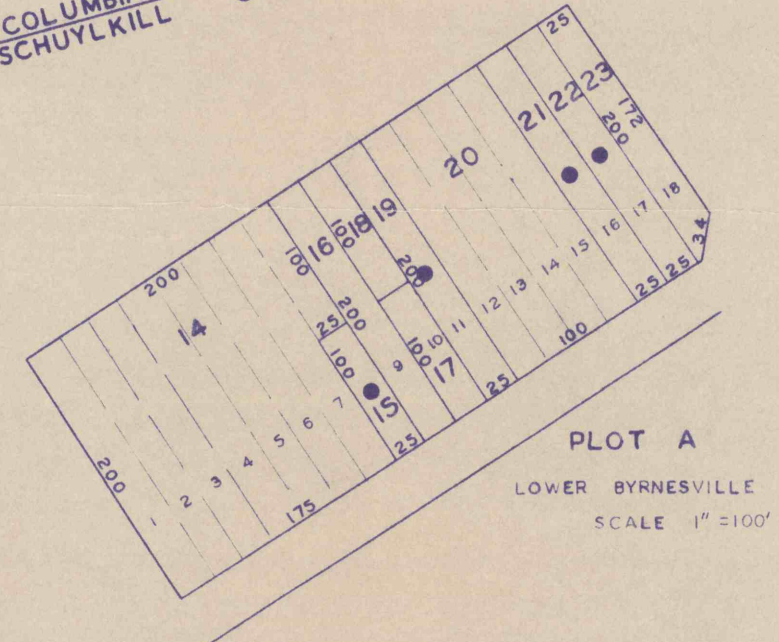
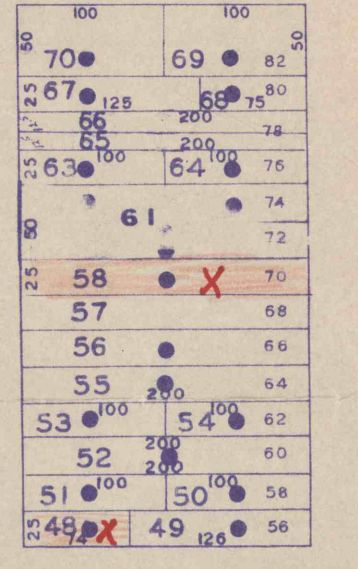
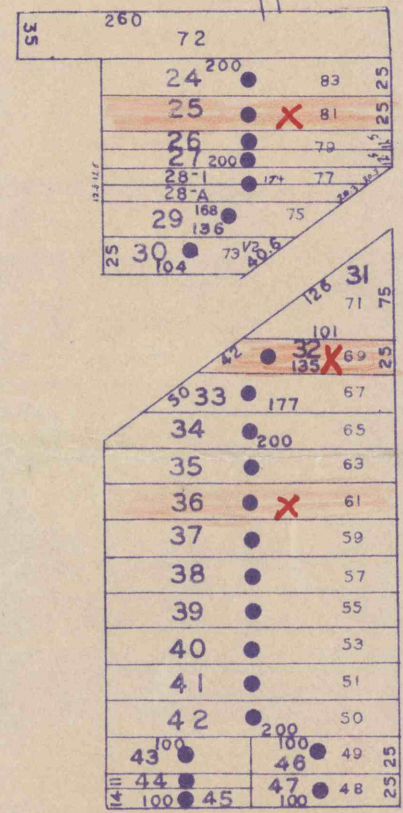
Cont.  
 on  
 Next  
 Map

See MAP 14-01  
 For  
 Cont.



14-01

14-03



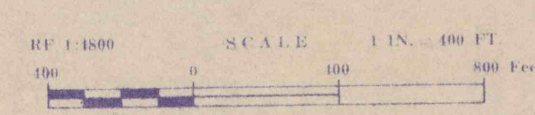
DATE	BY	DATE	BY	DESCRIPTION
12-31-77	AD	8-31-60	J.P.A.	
		8-31-61	J.P.A.	
		8-31-62	J.P.A.	
		8-31-63	J.P.A.	
		8-31-64	J.P.A.	
		12-31-65	J.P.A.	
		12-31-66	J.P.A.	
		12-31-67	J.P.A.	
		12-31-71	J.P.A.	
		12-31-74	D.A.D.	
		12-31-75	D.A.D.	
		12-31-76	D.A.D.	

DATA TAKEN FROM:  
 AERIAL PHOTOGRAPHS, FLIGHT DATES 1950, 1957,  
 AND OFFICE OF REGISTRAR AND RECORDER  
 COLUMBIA COUNTY COURT HOUSE, BLOOMSBURG, PA.

NOTE:  
 THESE MAPS HAVE BEEN PREPARED FOR THE PURPOSE OF ASSISTING THE COUNTY  
 COMMISSIONERS AND OTHER OFFICIALS IN MAKING TAX ASSESSMENTS AND SHOULD  
 NOT BE USED AS INDIVIDUAL PROPERTY SURVEYS FOR LEGAL TRANSACTIONS.  
 BOUNDARY LINES AND LOT DIMENSIONS WERE INTERPRETED FROM AERIAL PHOTO-  
 GRAPHS AND EXISTING COUNTY RECORDS. BOUNDARIES WERE VERIFIED WHEREVER  
 POSSIBLE BY INTERVIEW WITH PROPERTY OWNER  
 AT NO TIME WERE MEASUREMENTS VERIFIED BY FIELD SURVEYS

SCHUYLKILL COUNTY

TAX ASSESSMENT MAP  
 COUNTY OF COLUMBIA  
 PENNSYLVANIA



LEGEND  
 ● IMPROVED PARCEL  
 + COORDINATE INTERSECTIONS

GWIN, LARSON & KIMBALL  
 ENGINEERS & CARTOGRAPHERS  
 ALTOONA & EBENSBURG, PENNA.

CONYNGHAM  
 TOWNSHIP

TAX MAP No. 14-02